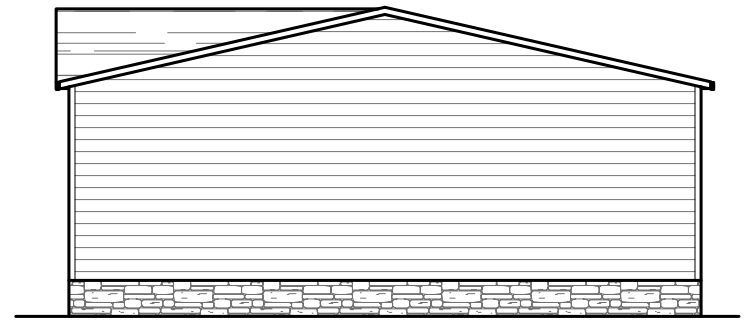




REAR ELEVATION



LEFT SIDE ELEVATION



RIGHT SIDE ELEVATION



FRONT ELEVATION

1580 SQ.FT. (STD PLAN "CONDITIONED")
N/A SQ.FT. (W/OPT. PORCH/RECESS "CONDITIONED")

CMH MANUFACTURING Product Designer: JDC	Model #: SLT28G03A Date: 8/25/14	Drawing #: Scale: N.T.S.	38M141
	28 x 60 Solution		
ELEVATION			

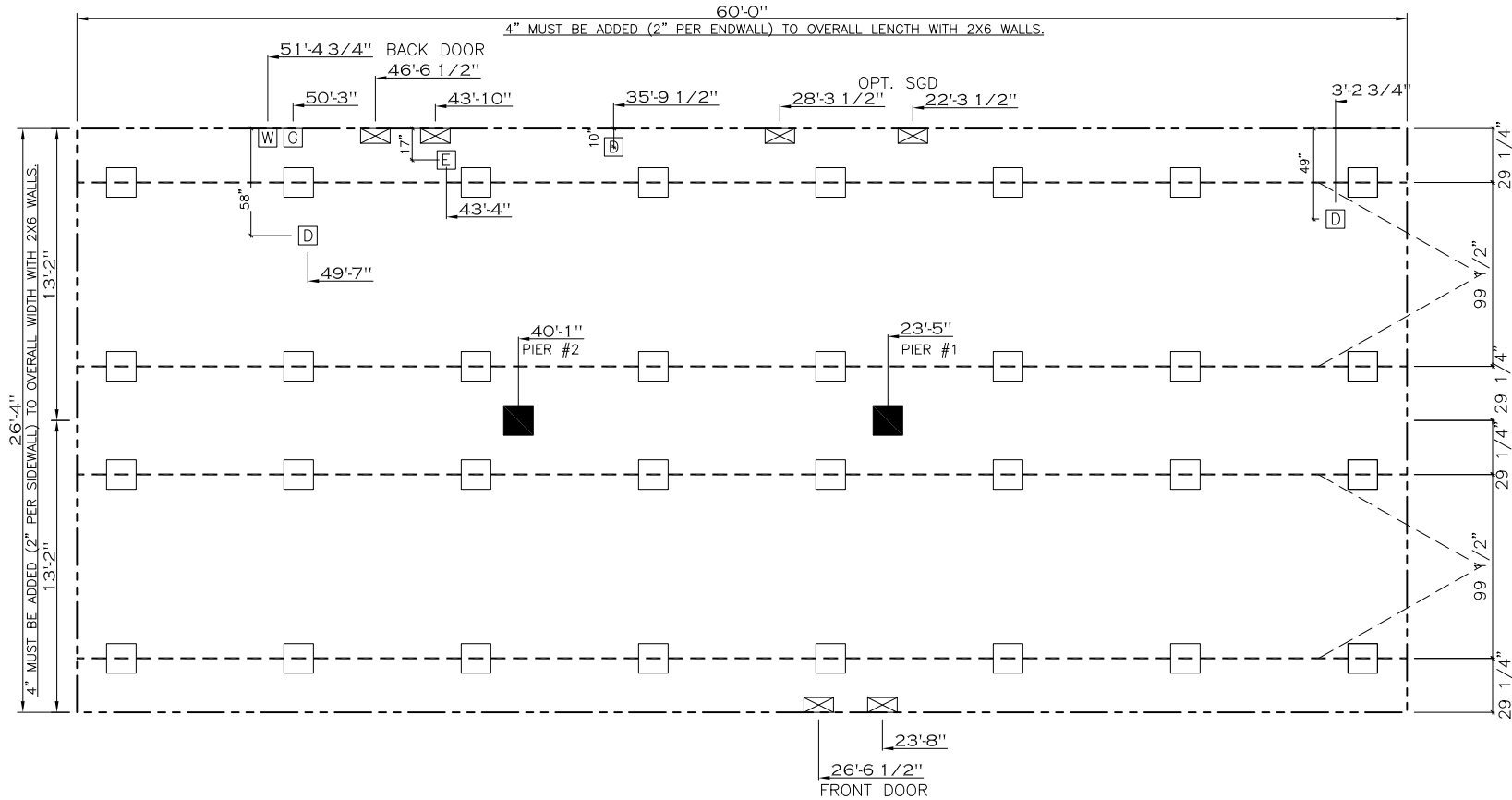
20 lb ROOF LOAD SIDEWALL OPENING PIER LOAD 28' BOX WIDTH	SIDEWALL OPENING (FT) REQUIRED PIER LOAD (LBS)					
	3	4	5	6	8	10
	1175	1330	1485	1640	1950	2260

20 psf Roof Live Load		
Marriage Line Column Locations		
	Distance from Hitch	Pier Load (lbs)
1	23.417	3692
2	40.083	3692

30 psf Roof Live Load		
Marriage Line Column Locations		
	Distance from Hitch	Pier Load (lbs)
1	23.417	5842
2	40.083	5842

40 psf Roof Live Load		
Marriage Line Column Locations		
	Distance from Hitch	Pier Load (lbs)
1	23.417	7203
2	40.083	7203

*FOR 30 lb & 40 lb ROOF LOAD REFER TO TABLES 7b & 7c IN THE INSTALLATION MANUAL.

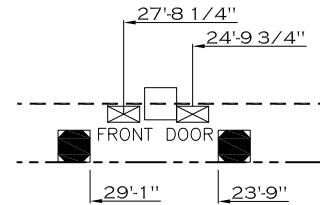


GENERAL NOTES:

- PIER LOADS SHOWN ARE TO BE USED TO SIZE THE FOOTINGS BELOW THE MARRIAGEWALL FOR COLUMN SUPPORT PIERS. REFER TO TABLES 6b AND 6c IN THE INSTALLATION MANUAL FOR LOAD ON FRAME PIER FOOTINGS FOR HOMES THAT DO NOT REQUIRE PERIMETER BLOCKING. REFER TO TABLES 7b AND 7c IN THE INSTALLATION MANUAL FOR LOAD ON FRAME PIER FOOTINGS THAT REQUIRE PERIMETER BLOCKING. REFER TO TABLES 10 AND 10a TO DETERMINE FOOTING SIZE FOR ALL PIERS.
- REFER TO TABLE 9 FOR PIER CONFIGURATION AND MAXIMUM ALLOWABLE HEIGHTS. CROSS REFERENCE THE PIER HEIGHT WITH THE MAXIMUM ALLOWABLE FLOOR HEIGHT LISTED IN THE FRAME TIEDOWN CHARTS (TABLE 18, 19, AND 20).
- FLOOR WIDTH SHOWN IS FOR STANDARD PRODUCT ONLY. CONTACT THE MFG PLANT FOR SPECIFICATIONS OF OPTIONS ORDERED.
- SERVICE DROP LOCATIONS IDENTIFIED ARE APPROXIMATE.
- THE MAXIMUM SPACING FOR 8" I-BEAMS IS 8 FEET, 10" & 12" I-BEAMS ARE 10 FEET.

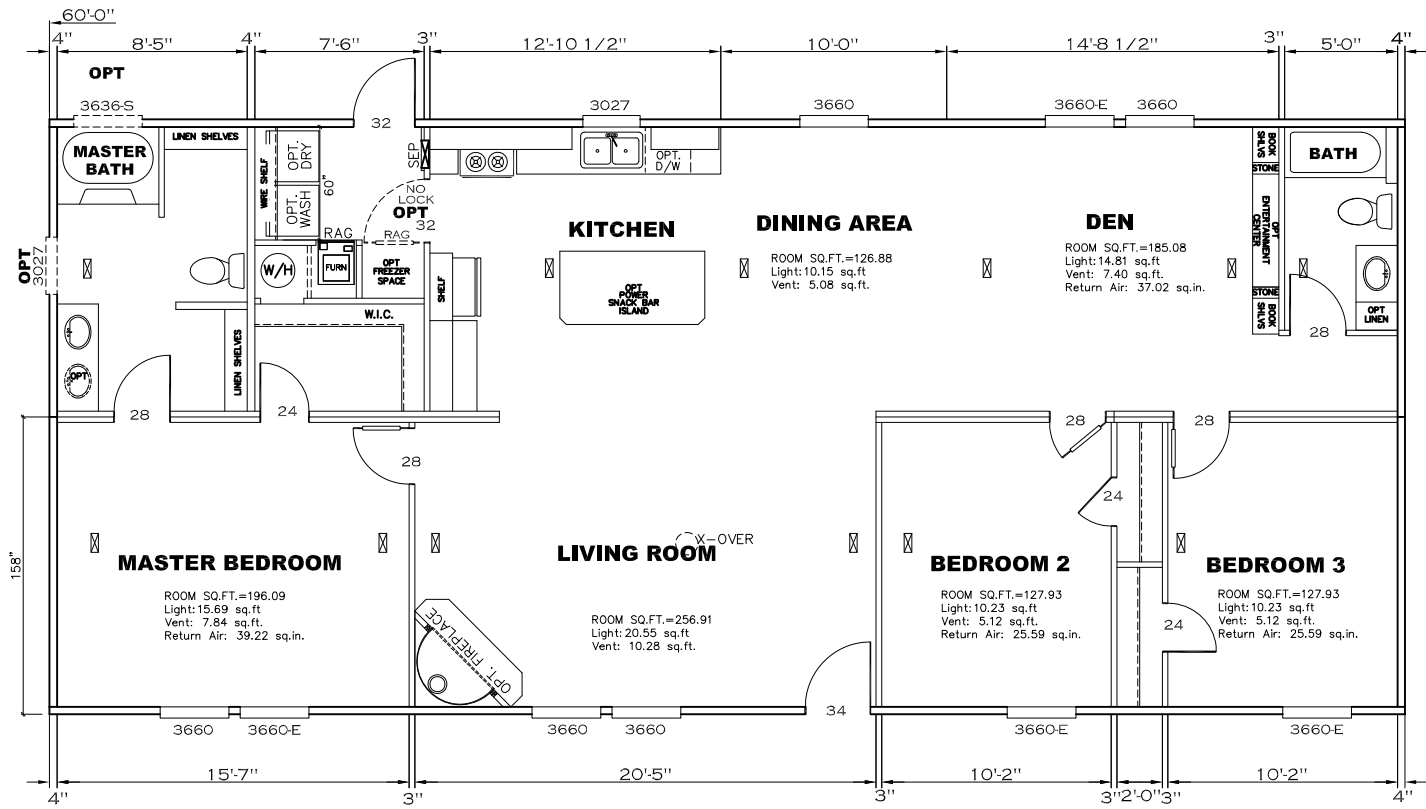
PIER LEGEND	
□	= SUPPORT UNDER MATING OPENING
■	= SUPPORT AT MATING COLUMN
▨	= SUPPORT UNDER MATING WALL
■	= PIER PORCH/RECESSED ENTRY
□	= PIER MAIN BEAM
⊞	= PIER PERIMETER
●	= TIE-DOWN SUPPORT (QTY PER TBL M, SEE DETAIL D-6 IN FOUND. PKG.)

SERVICE DROP LEGEND	
E	= ELECTRICAL DROP
W	= WATER INLET
D	= DWV PLUMBING DROP
G	= GAS INLET



1580 SQ.FT. (STD PLAN "CONDITIONED")
N/A SQ.FT. (W/OPT. PORCH/RECESS "CONDITIONED")

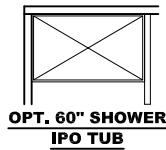
CMH MANUFACTURING Product Designer: JDC	Model #: SLT28603A	Drawing #:
	Date: 8/25/14	Scale: N.T.S.
28 x 60 Solution		38M141
PIER DESIGN		



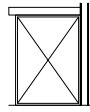
APPROVED
HWC
REVISED
 JULY 19 2016
 FP-28-4416
 Federal Manufactured
 Home Construction
 And Safety Standards
APPROVED

1580 SQ.FT. (STD PLAN "CONDITIONED")
 N/A SQ.FT. (W/OPT. PORCH/RECESS "CONDITIONED")

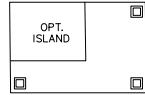
CMH MANUFACTURING	Model #: 5LT28603A	Drawing #:
	Date: 8/25/14	Scale: N.T.S.
Product Designer: JDC	28 x 60 Solution	
FLOOR PLAN		
		REVISION ECR-280649 2/16/16 JDC



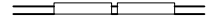
OPT. 60" SHOWER IPO TUB



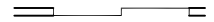
OPT. 48" SHOWER IPO LINEN SHELVES



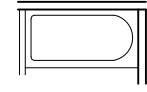
OPT. ATRIUM WINDOW IN DINING ROOM



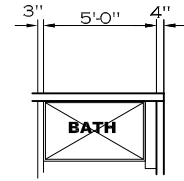
OPT. S.G.D. IN DINING ROOM



OPT. 60" TUB

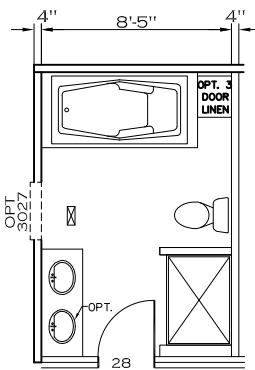


OPT. 60" TUB



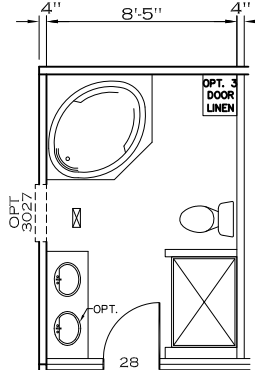
OPT. 54" SHOWER

OPT. 3636-S OVER MASTER BATH TUB

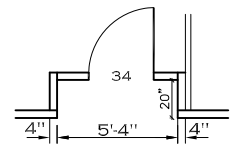
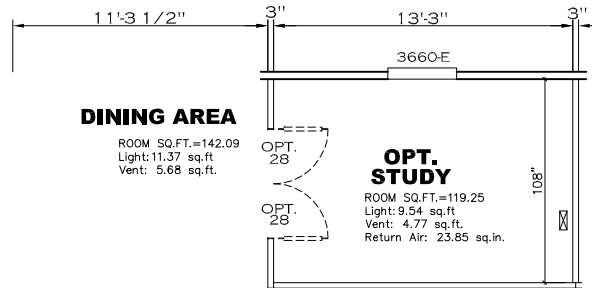
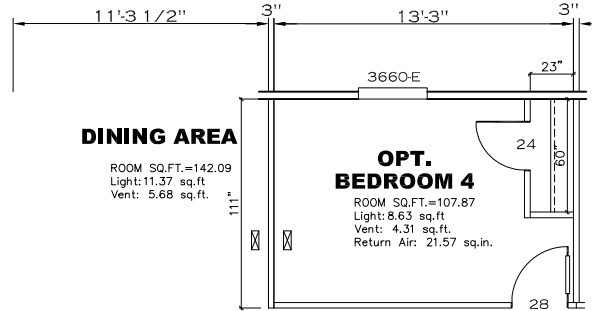


OPT. LUXURY BATH

OPT. 3636-S OVER MASTER BATH TUB



OPT. GLAMOUR BATH



OPT. RECESSED ENTRY

APPROVED

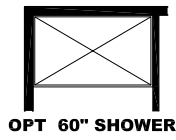
HWC REVISED

JAN 26 2015
FP-28-4416

Federal Manufactured
Home Construction
And Safety Standards

APPROVED

1580 SQ.FT. (STD PLAN "CONDITIONED")		N/A SQ.FT. (W/OPT. PORCH/RECESS "CONDITIONED")	
CMH MANUFACTURING	Model #: 5LT28603A	Drawing #:	
	Date: 8/25/14	Scale: N.T.S.	38M141
Product Designer: JDC		28 x 60 Solution	
FLOOR PLAN OPTS		2 / REVISION ECR-22942 1/22/15 JDC	



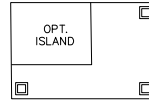
OPT 60" SHOWER



OPT 48" SHOWER



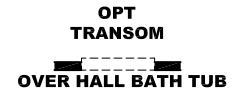
OPT MONSTER ISLAND



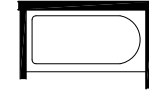
OPT ISLAND



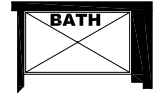
OPT S.G.D.



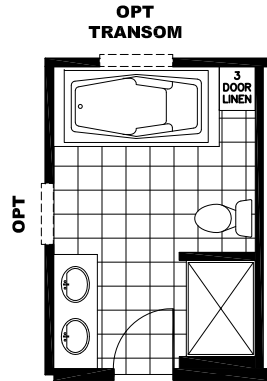
OPT TRANSOM OVER HALL BATH TUB



OPT 60" TUB

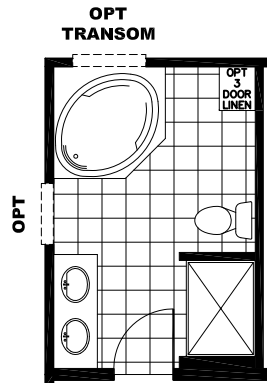


OPT 54" SHOWER



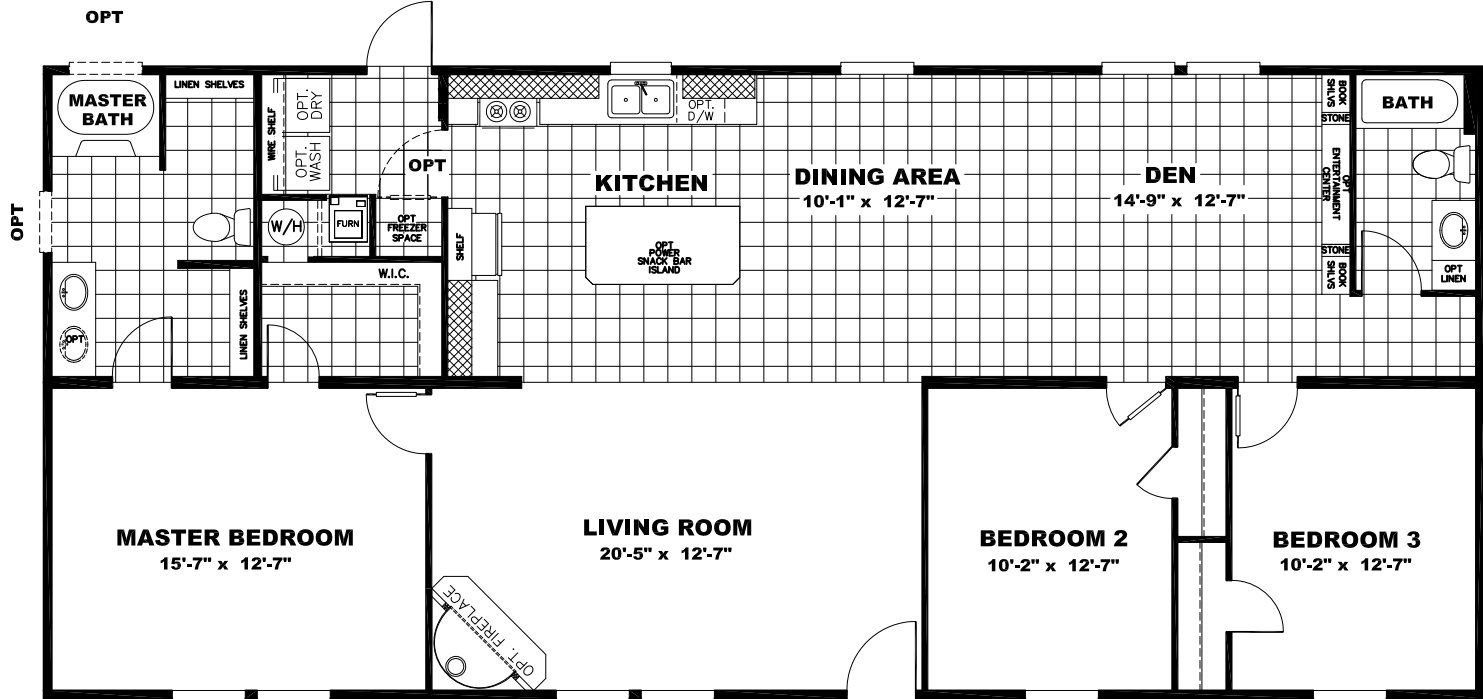
OPT TRANSOM

OPT LUXURY BATH



OPT TRANSOM

OPT GLAMOUR BATH



MASTER BEDROOM
15'-7" x 12'-7"

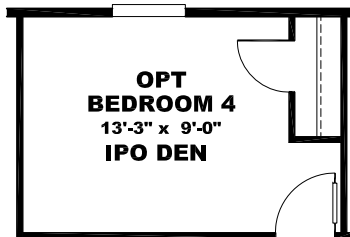
LIVING ROOM
20'-5" x 12'-7"

DINING AREA
10'-1" x 12'-7"

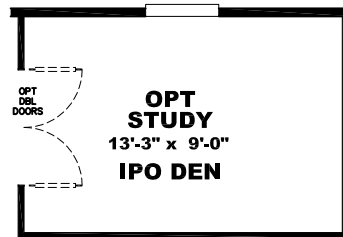
DEN
14'-9" x 12'-7"

BEDROOM 2
10'-2" x 12'-7"

BEDROOM 3
10'-2" x 12'-7"



OPT BEDROOM 4
13'-3" x 9'-0"
IPO DEN



OPT DEL. DOORS
OPT STUDY
13'-3" x 9'-0"
IPO DEN

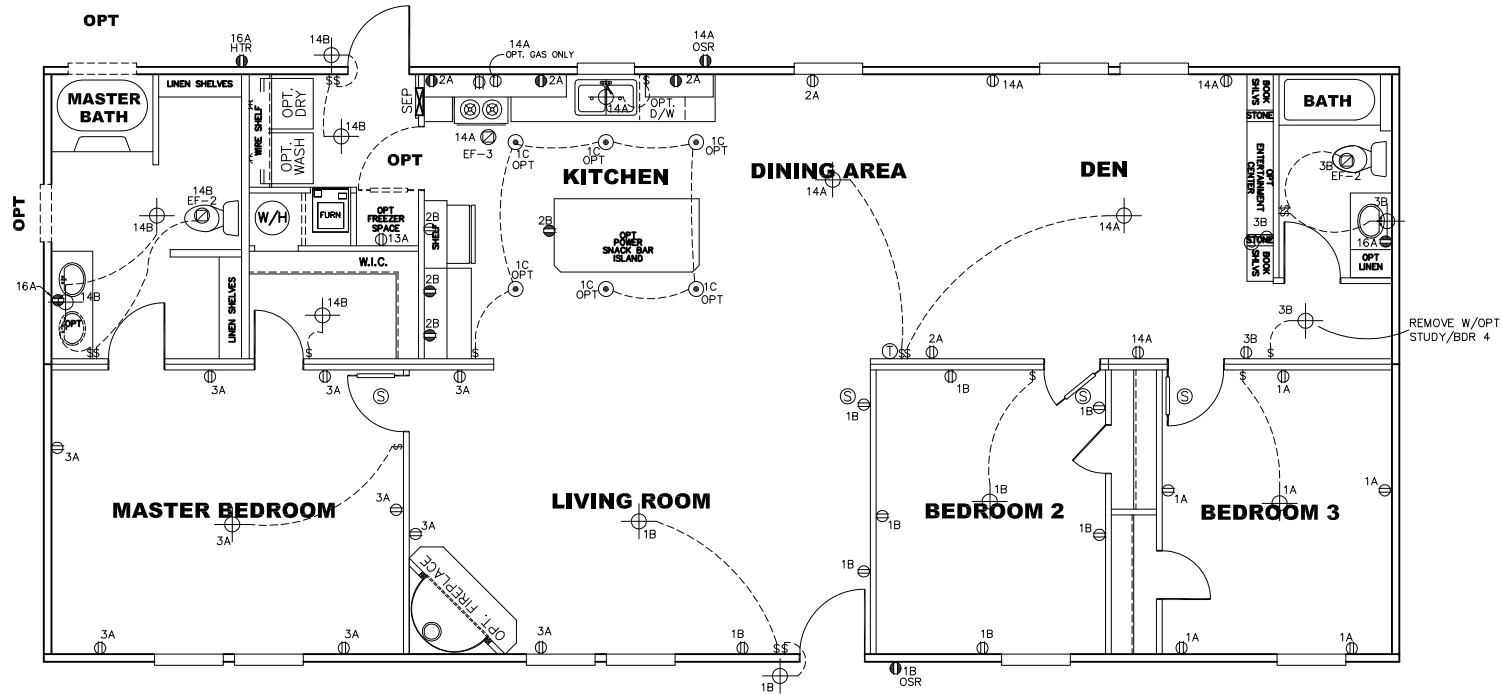


OPT LINO ENTRY



OPT HALL LINEN

1580 SQ.FT.
Model #: SLT28G03A
Solution
Drawing #:
38M141



NOTES:

1. ALL CIRCUITS SHOWN ARE FOR REFERENCE AND MAY BE CHANGED BASED ON OPTIONAL COMPONENTS INSTALLED IN THE HOME.
2. REFER TO EL SECTION OF THE DAPIA FOR SYMBOL CHART.
3. EITHER LIGHT OR RECEPTACLE MUST CONNECT TO SWITCH.
4. EF-1= 50 CFM EXHAUST FAN REQUIRED FOR THERMAL ZONE III
THERMAL ZONES I & II MAY USE FAN OR WINDOW W/1.5 SQ. FT. OPENABLE GLASS.
5. EF-2= 50 CFM EXHAUST FAN REQUIRED THERMAL ZONE I, II, AND III.
6. EF-3= 100 CFM RANGE EXHAUST FAN, SWITCH AT HOOD.
7. EF-4= WHOLE HOUSE VENTILATION PER REQUIREMENTS IN S-HV-10 & 10A OR M-HV-11 & 11A OF DAPIA.
8. REFER TO EL SECTION OF THE DAPIA OR THE MFG. INSTALLATION INSTRUCTIONS FOR PROPER WIRE SIZE AND BREAKER SIZE FOR SPECIFIC APPLIANCE AND MODEL BEING INSTALLED.
9. ALL SMOKE ALARMS TO BE LOCATED ON THE CEILING.
10. DIMENSIONS SHOWN ON PRINT ARE APPROXIMATE AND TO BE USED ONLY AS A GUIDELINE.

APPROVED
REVISED
JULY 19 2016
FP-28-4416
Federal Manufactured
Home Construction
And Safety Standards
APPROVED

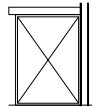
1580 SQ.FT. (STD PLAN "CONDITIONED")
N/A SQ.FT. (W/OPT. PORCH/RECESS "CONDITIONED")

CIRCUIT	CIRCUIT #	WIRE	BREAKER	CIRCUIT	CIRCUIT #	WIRE	BREAKER	CIRCUIT	CIRCUIT #	WIRE	BREAKER
LIGHT/RECEP	1A,1B,1C,3A,3B,14A,14B	14-2	15-SP	WATER HEATER	4A,6B	SEE NOTE #8		BATH/HTR	16A	12-2	20-SP
KITCHEN/DINING	2A,2B	12-2	20-SP	RANGE	5B,7A	SEE NOTE #8		OPT G/DISP	9B	SEE NOTE #8	
WASHER	15B	12-2	20-SP	FURNACE	6A,8A,B,10A,B	SEE NOTE #8		OPT SPA/WP/LAC	11A,B	SEE NOTE #8	
DRYER	5A,7B	SEE NOTE #8		OPT D/WASH	9A	SEE NOTE #8		FREEZER	13A	SEE NOTE #8	
				SMOKE ALARM	4B	SEE NOTE #8					

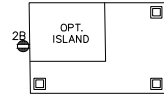
CMH MANUFACTURING	Model #: 5LT28603A	Drawing #:
	Date: 8/25/14	Scale: N.T.S.
Product Designer: JDC	28 x 60 Solution	
ELECTRICAL PLAN-06		



OPT. 60" SHOWER IPO TUB



OPT. 48" SHOWER IPO LINEN SHELVES

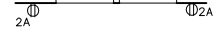


OPT. ISLAND



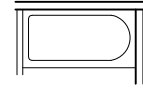
OPT. MONSTER ISLAND

OPT. ATRIUM WINDOW IN DINING ROOM



OPT. S.G.D. IN DINING ROOM

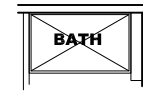
OVER HALL BATH TUB



OPT. 60" TUB



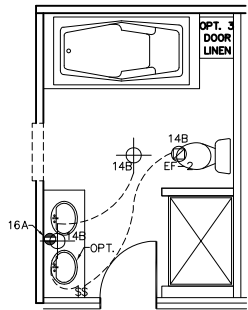
OPT. DBL. LAV IN HALL BATH



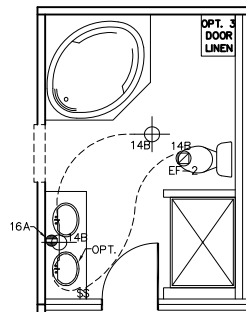
OPT. 54" SHOWER

OVER MASTER BATH TUB

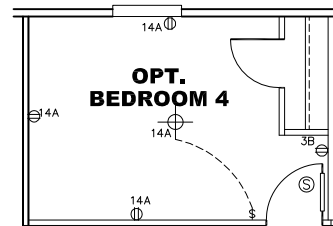
OVER MASTER BATH TUB



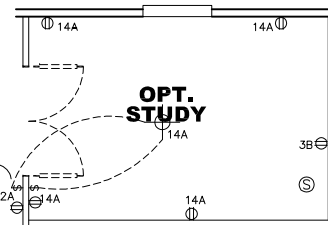
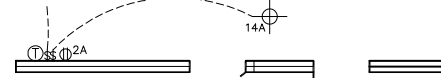
OPT. LUXURY BATH



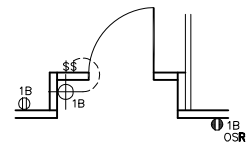
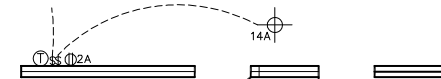
OPT. GLAMOUR BATH



OPT. BEDROOM 4



OPT. STUDY



OPT. RECESSED ENTRY

APPROVED

HWC
REVISED

JAN 26 2015
FP-28-4416

Federal Manufactured
Home Construction
And Safety Standards

APPROVED

SEE STD. PAGE FOR NOTES & LEGENDS
1580 SQ.FT. (STD PLAN "CONDITIONED")
N/A SQ.FT. (W/OPT. PORCH/RECESS "CONDITIONED")

CMH MANUFACTURING	Model #: 5LT28603A	Drawing #:
	Date: 8/25/14	Scale: N.T.S.
Product Designer: JDC	28 x 60 Solution	
ELECTRICAL PLAN-06 OPTS		

REVISION RCR-22942
1/22/15 JDC

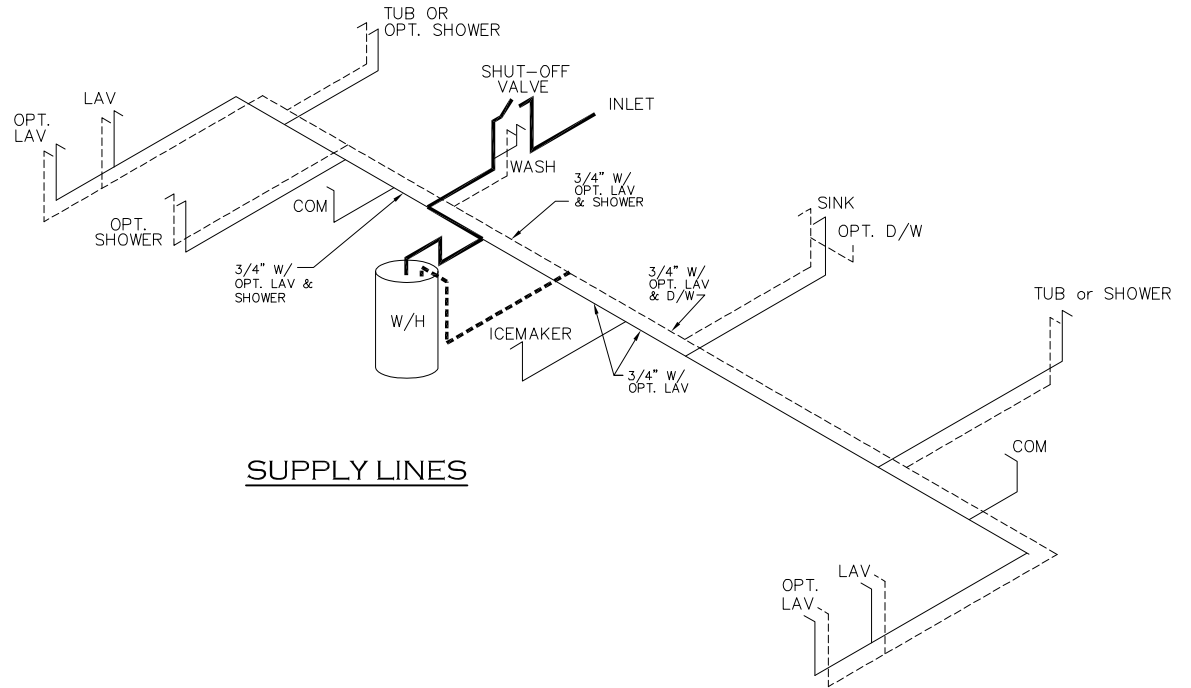
APPROVED

IWCG
REVISED

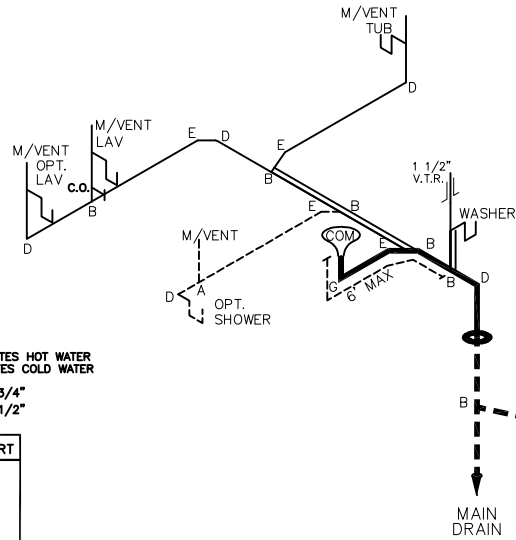
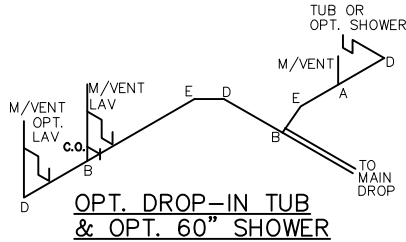
JAN 26 2015
FP-28-4416

Federal Manufactured
Home Construction
And Safety Standards

APPROVED



SUPPLY LINES



DWV LINES

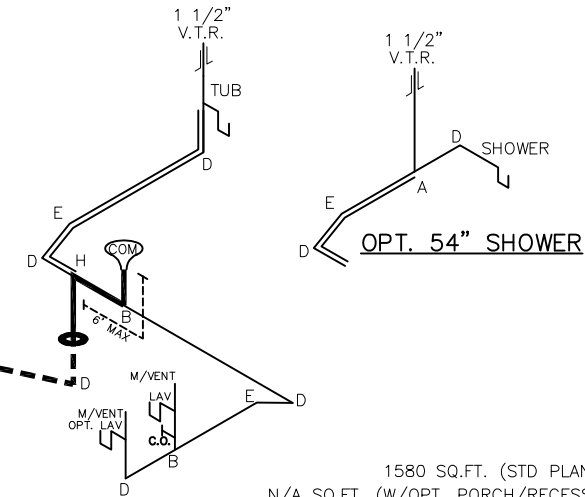
NOTE:
DASHED LINES INDICATES HOT WATER
SOLID LINES INDICATES COLD WATER

===== = 3/4"
===== = 1/2"

DWV LINE SIZE CHART

===== = 3"
===== = 2"
===== = 1 1/2"

LEGEND	
A	SHORT TURN T-Y
B	LONG TURN T-Y
C	1/4 BEND
D	LONG SWEEP 1/4 BEND
E	45 ELL
F	DBL. SANITARY TEE
G	4x3 CLOSET ELL
H	DOUBLE ELL
I	22 1/2' ELL
J	45' Y
K	LONG TURN STREET ELBOW
L	45 FTG ELL



1580 SQ.FT. (STD PLAN "CONDITIONED")
N/A SQ.FT. (W/OPT. PORCH/RECESS "CONDITIONED")

CMH MANUFACTURING	Model #: 5LT28603A	Drawing #:
	Date: 8/25/14	Scale: N.T.S. 38M141
Product Designer: JDC		28 x 60 Solution
DWV & SUPPLY LINES		