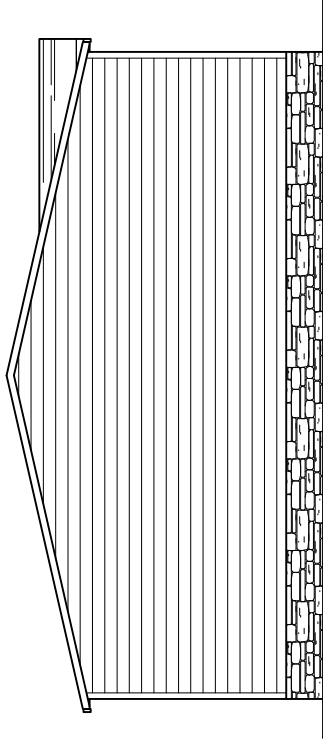
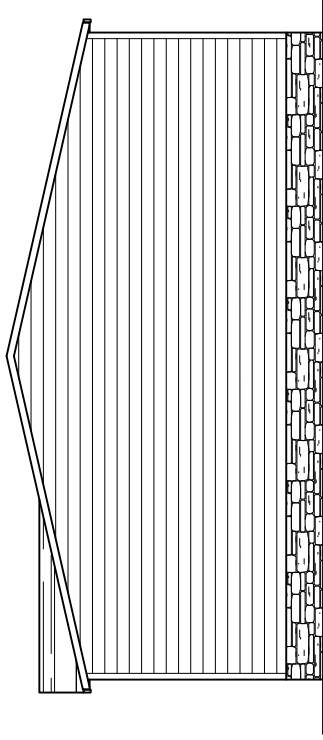


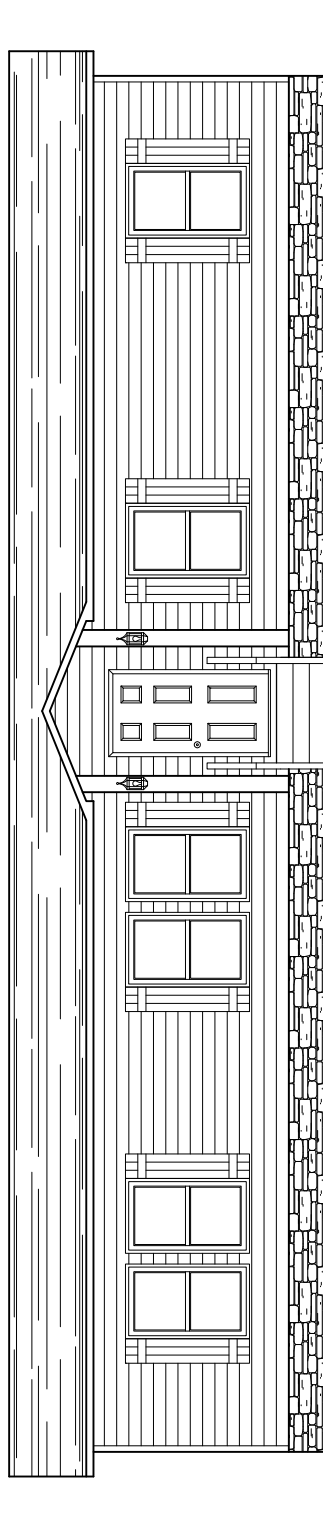
REAR ELEVATION



LEFT SIDE ELEVATION



RIGHT SIDE ELEVATION



FRONT ELEVATION

N/A SQ.FT. (W/OPT. PORCH/RECESS "CONDITIONED") 1475 SQ.FT. (STD PLAN "CONDITIONED")

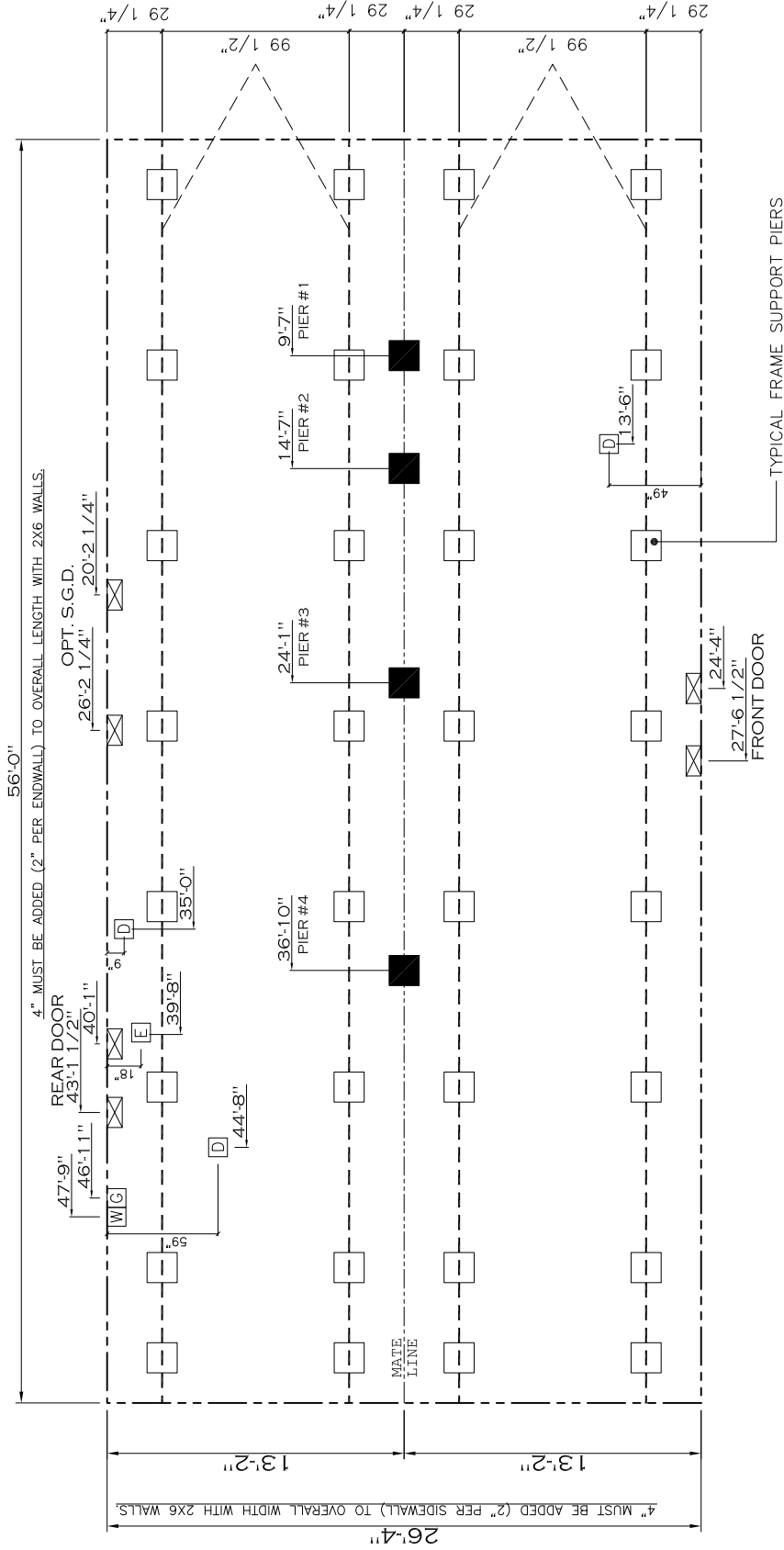
CMH MANUFACTURING	Model #: CEL28563V	Drawing #:
	Date: 8-29-13	Scale: NTS 3/8" = 1'-0"

Product Designer: HARMONB 28 X 56 CELEBRATION

ELEVATION

20 lb ROOF LOAD SIDEWALL OPENING PIER LOAD 28' BOX WIDTH		SIDEWALL OPENING (FT) REQUIRED PIER LOAD (LBS)			
3	4	5	6	8	10
1175	1330	1485	1640	1950	2260

*FOR 30 lb & 40 lb ROOF LOAD REFER TO TABLES 7b & 7c IN THE INSTALLATION MANUAL.



- GENERAL NOTES:
- PIER LOADS SHOWN ARE TO BE USED TO SIZE THE FOOTINGS BELOW THE MARRIAGEWALL FOR COLUMN SUPPORT PIERS. REFER TO TABLES 6b AND 6c IN THE INSTALLATION MANUAL FOR LOAD ON FRAME PIER FOOTINGS FOR HOMES THAT DO NOT REQUIRE PERIMETER BLOCKING. REFER TO TABLES 7b AND 7c IN THE INSTALLATION MANUAL FOR LOAD ON FRAME PIER FOOTINGS THAT REQUIRE PERIMETER BLOCKING. REFER TO TABLES 10 AND 10g TO DETERMINE FOOTING SIZE FOR ALL PIERS.
 - REFER TO TABLE 9 FOR PIER CONFIGURATION AND MAXIMUM ALLOWABLE HEIGHTS. CROSS REFERENCE THE PIER HEIGHT WITH THE MAXIMUM ALLOWABLE FLOOR HEIGHT LISTED IN THE FRAME TIEDOWN CHARTS (TABLE 18, 19, AND 20). FLOOR WIDTH SHOWN IS FOR STANDARD PRODUCT ONLY. CONTACT THE MFG PLANT FOR SPECIFICATIONS OF OPTIONS ORDERED.
 - SERVICE DROP LOCATIONS IDENTIFIED ARE APPROXIMATE.
 - THE MAXIMUM SPACING FOR 8" I-BEAMS IS 8 FEET, 10" & 12" I-BEAMS ARE 10 FEET.

PIER LEGEND	
□	= SUPPORT UNDER MATING OPENING
■	= SUPPORT AT MATING COLUMN
▨	= SUPPORT UNDER MATING WALL
■	= PIER PORCH/RECESSED ENTRY
□	= PIER MAIN BEAM
■	= PIER PERIMETER

SERVICE DROP LEGEND	
E	= ELECTRICAL DROP
W	= WATER INLET
D	= DWV PLUMBING DROP
G	= GAS INLET

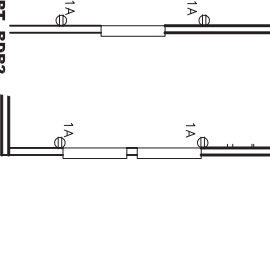
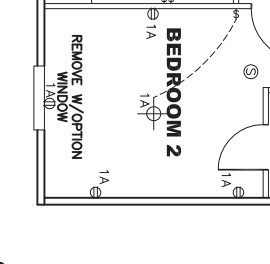
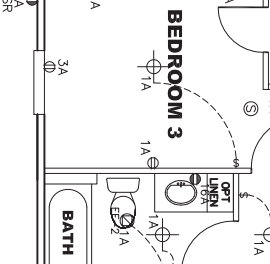
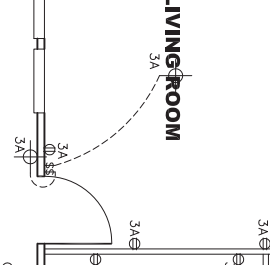
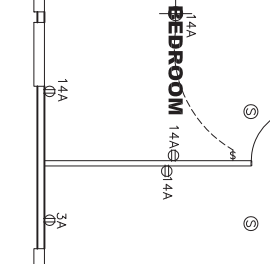
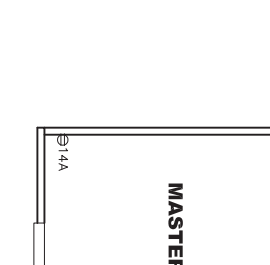
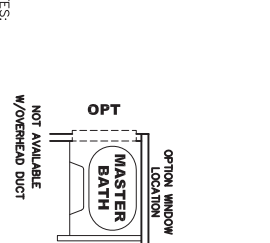
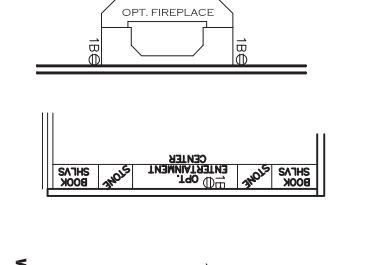
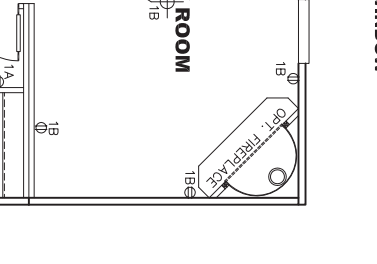
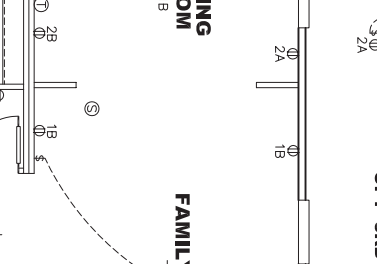
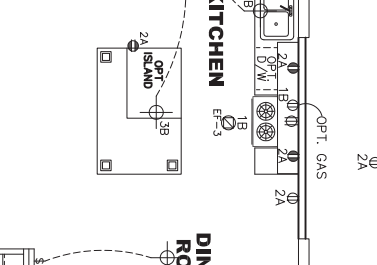
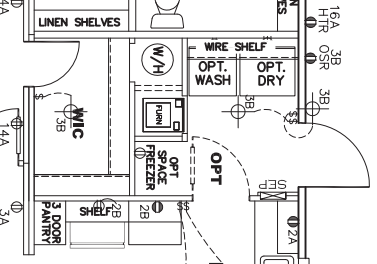
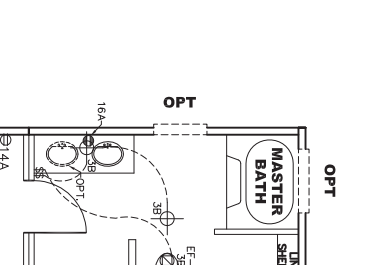
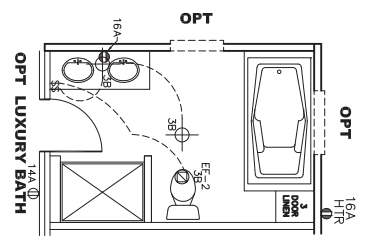
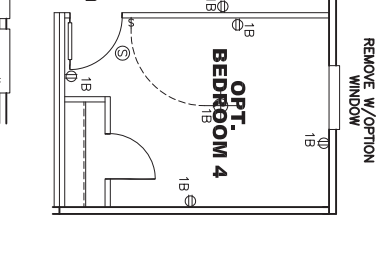
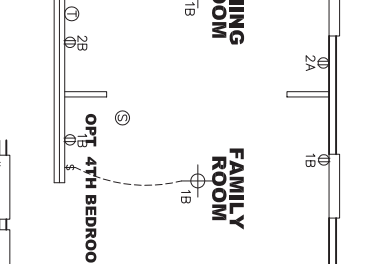
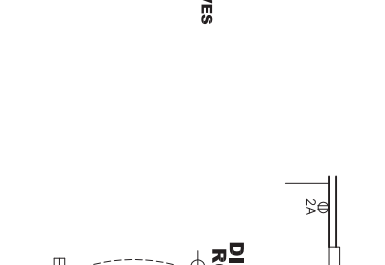
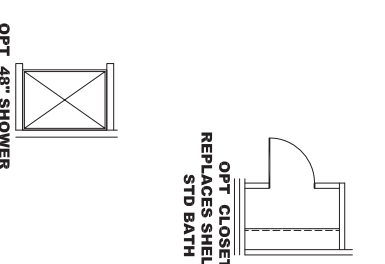
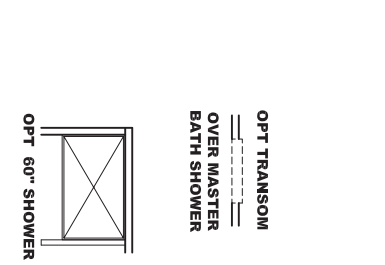
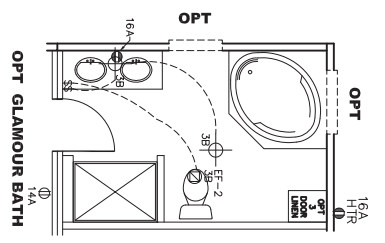
1475 SQ.FT. (STD PLAN "CONDITIONED")
N/A SQ.FT. (W/OPT. PORCH/RECESS "CONDITIONED")

CMH MANUFACTURING
Model #: CEL28563V
Date: 08-29-13
Scale: NTS
38M120

Product Designer: HARRYCONE
28 X 56 CELEBRATION

1475 SQ.FT. (STD PLAN "CONDITIONED")
N/A SQ.FT. (W/OPT. PORCH/RECESS "CONDITIONED")

PIER LOADS



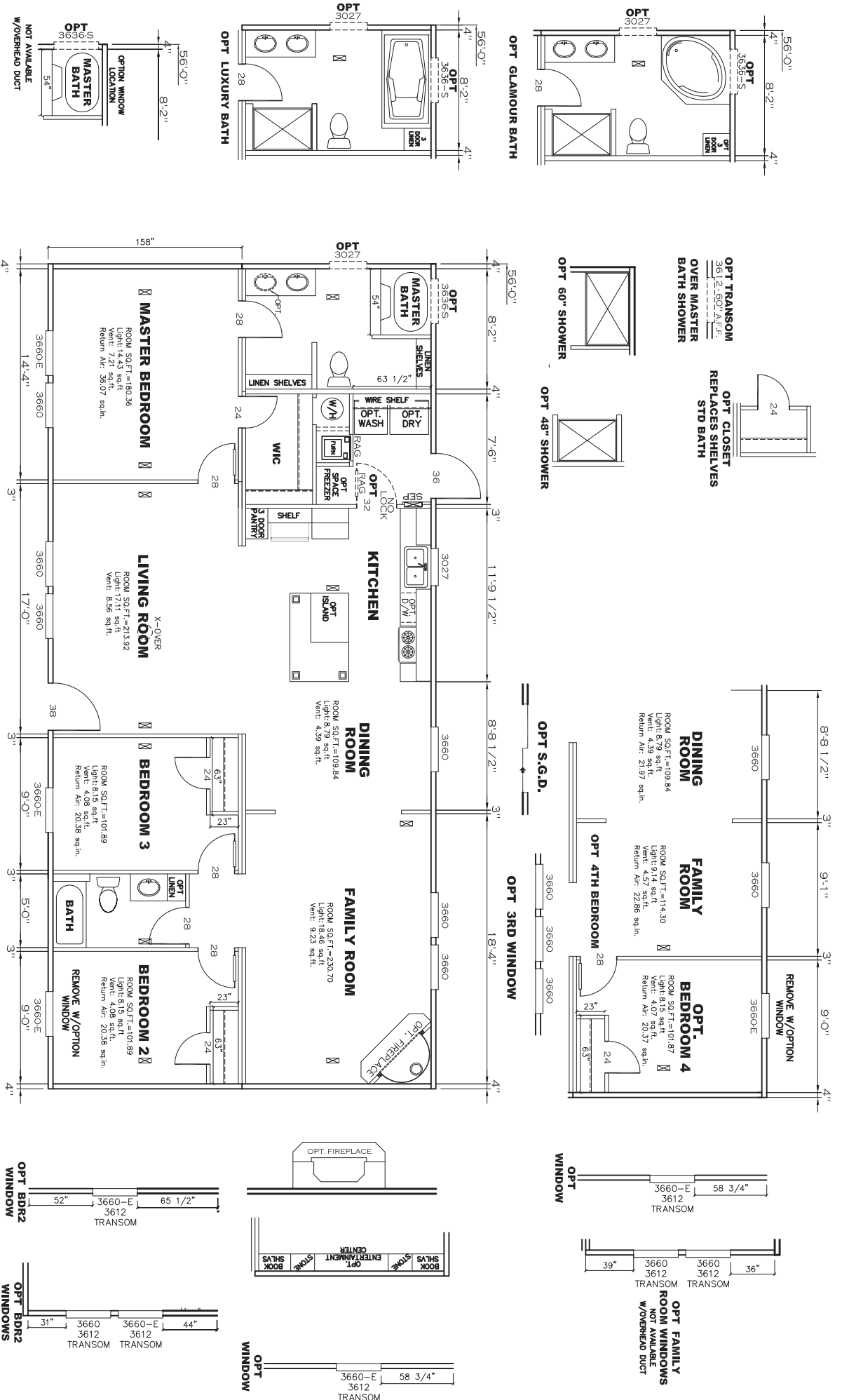
- NOTES:
1. ALL CIRCUITS SHOWN ARE FOR REFERENCE AND MAY BE CHANGED BASED ON OPTIONAL COMPONENTS INSTALLED IN THE HOME.
 2. REFER TO EL SECTION OF THE DATA FOR SYMBOL CHART.
 3. EITHER LIGHT OR RECEPTACLE MUST CONNECT TO SWITCH.
 4. EF-1= 50 CFM EXHAUST FAN REQUIRED FOR THERMAL ZONE III. THERMAL ZONES I & II MAY USE FAN OR WINDOW W/1.5 SQ. FT. OPENABLE GLASS.
 5. EF-2= 50 CFM EXHAUST FAN REQUIRED THERMAL ZONE I, II, AND III.
 6. EF-3= 100 CFM RANGE EXHAUST FAN, SWITCH AT HOOD.
 7. EF-4= WHOLE HOUSE VENTILATION PER REQUIREMENTS IN S-HV-10 & 10A OR M-HV-11 & 11A OF DAPA.
 8. REFER TO EL SECTION OF THE DATA OR THE MFG. INSTALLATION INSTRUCTIONS FOR PROPER WIRE SIZE AND BREAKER SIZE FOR SPECIFIC APPLIANCE AND MODEL BEING INSTALLED.
 9. ALL SMOKE ALARMS TO BE LOCATED ON THE CEILING.
 10. DIMENSIONS SHOWN ON PRINT ARE APPROXIMATE AND TO BE USED ONLY AS A GUIDELINE.

APPROVED
REVISED
 SEPT 9 2016
APPROVED
 Federal Manufactured Home Construction And Safety Standards

CIRCUIT #	WIRE	BREAKER	CIRCUIT #	WIRE	BREAKER	CIRCUIT #	WIRE	BREAKER
LIGHT/RECP	1A,1B,3A,3B,14A	14-2	15-SP	4A,6A	58,7A	BATHROOM	16A	12-2
KITCHEN	2A,2B	12-2	20-SP	9B	SEE NOTE #8	OPT G/OSP	11A,B	SEE NOTE #8
WASHER	12A	12-2	20-SP	3A	SEE NOTE #8	OPT W/ASH	9A	SEE NOTE #8
DRYER	5A,7B	SEE NOTE #8	SMOKE ALARM	4B	SEE NOTE #8	FREEZER	13A	SEE NOTE #8

1475 SQ.FT. (STD PLAN "CONDITIONED")
 N/A SQ.FT. (W/OPT. PORCH/RECESS "CONDITIONED")
CMH MANUFACTURING
 Model #: PNH1205G3V / Drawing #: 38M120
 Date: 6/29/13 / Eater: N15
 Product Designer: HARVOND
ELECTRICAL PLAN-06
 5/ REVISION ECR-472996
 8/30/16 JDC

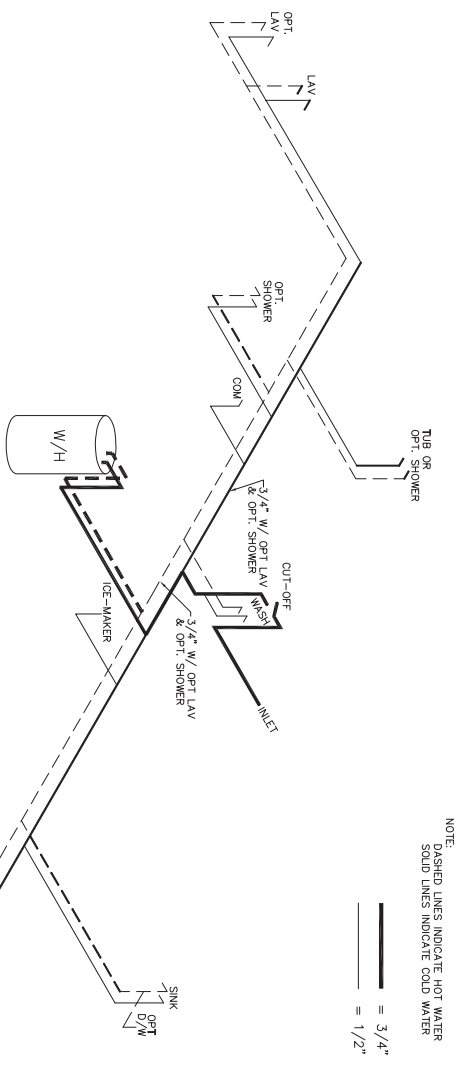
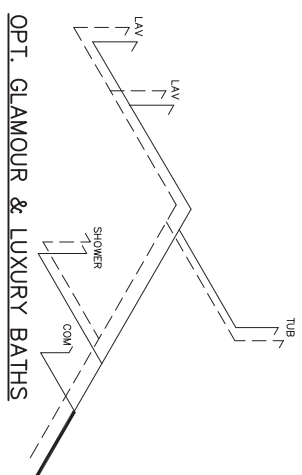
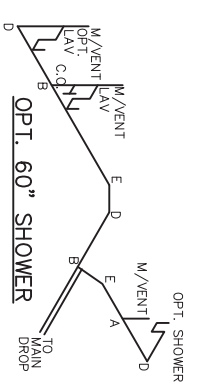
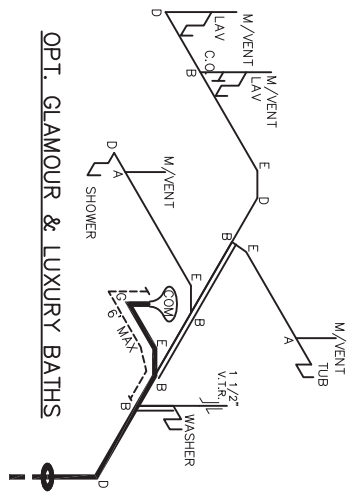
REMOVE W/OPTION WINDOW



FP-28-4186

APPROVED **REVISED** **APPROVED**
 FEDERAL MANUFACTURED HOME CONSTRUCTION AND SAFETY STANDARDS
 SEPT 9 2016

FLOOR PLAN
 1475 SQ.FT. (STD PLAN "CONDITIONED")
 N/A SQ.FT. (W/OPT. PORCH/RECESS "CONDITIONED")
 CMH MANUFACTURING
 Model #: PNH2205G3V
 Date: 6/29/13
 28 X 56 PINEHURST
 Drawing #: 38M120
 ECR-472986
 8/30/16 JDC

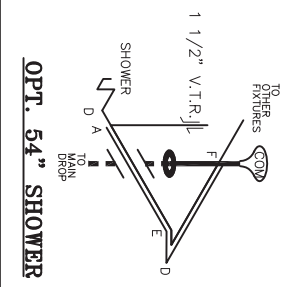
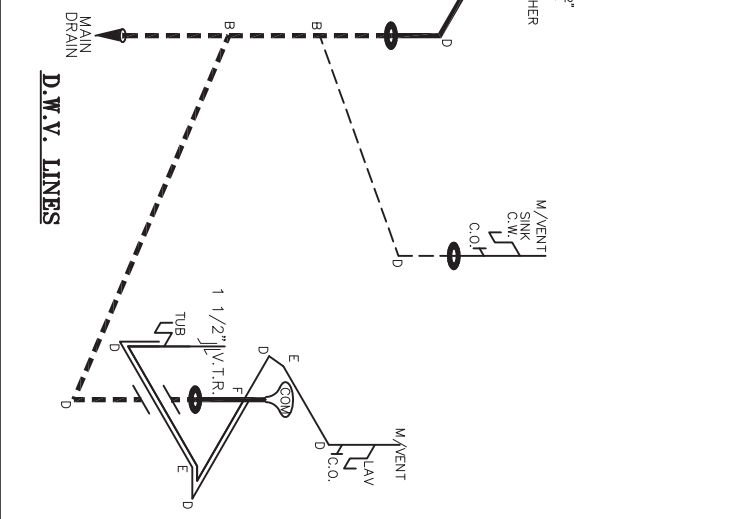


NOTE:
DASHED LINES INDICATE HOT WATER
SOLID LINES INDICATE COLD WATER

— = 3/4"
— = 1/2"

LEGEND

A	SHORT TURN T-Y
B	LONG TURN T-Y
C	1/4 BEND
D	45° SWEEP 1/4 BEND
E	45° SWEEP 1/2 BEND
F	DRILL SANITARY TEE
G	4X3 CLOSET ELL
H	DOUBLE ELL
I	22 1/2° ELL
J	45° Y
K	LONG TURN STREET ELBOW
L	45 FTG. ELL



APPROVED

DWVG

REVISED

OCT 2 2015

APPROVED

Federal Manufactured Home Construction And Safety Standards

FP-28-4186

DWV LINE SIZE CHART

—	= 3"
—	= 2"
—	= 1 1/2"

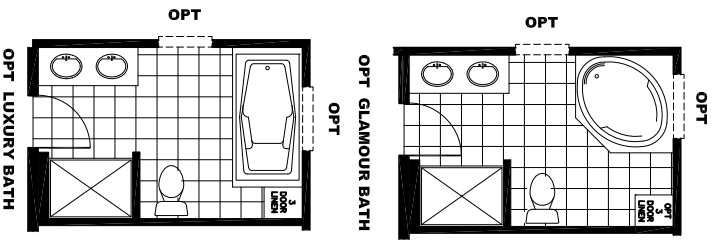
38M120

SQ.FT. (STD PLAN "CONDITIONED")
SQ.FT. (W/OPT. PORCH/RECESS "CONDITIONED")

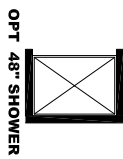
Product Designer:	CMH MANUFACTURING
Model #:	
Date:	
Field:	
Drawing #:	

D.W.V. and Supply Lines

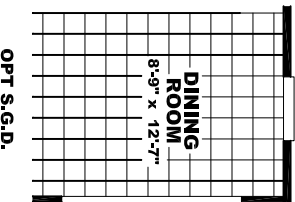
2 **REVISON** ECR-28834
9/28/16 JDC



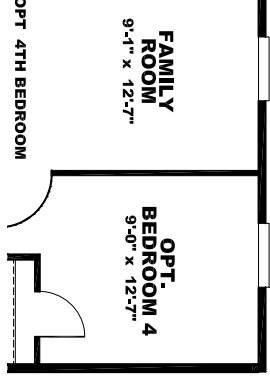
OPT TRANSOM
 OVER MASTER BATH SHOWER



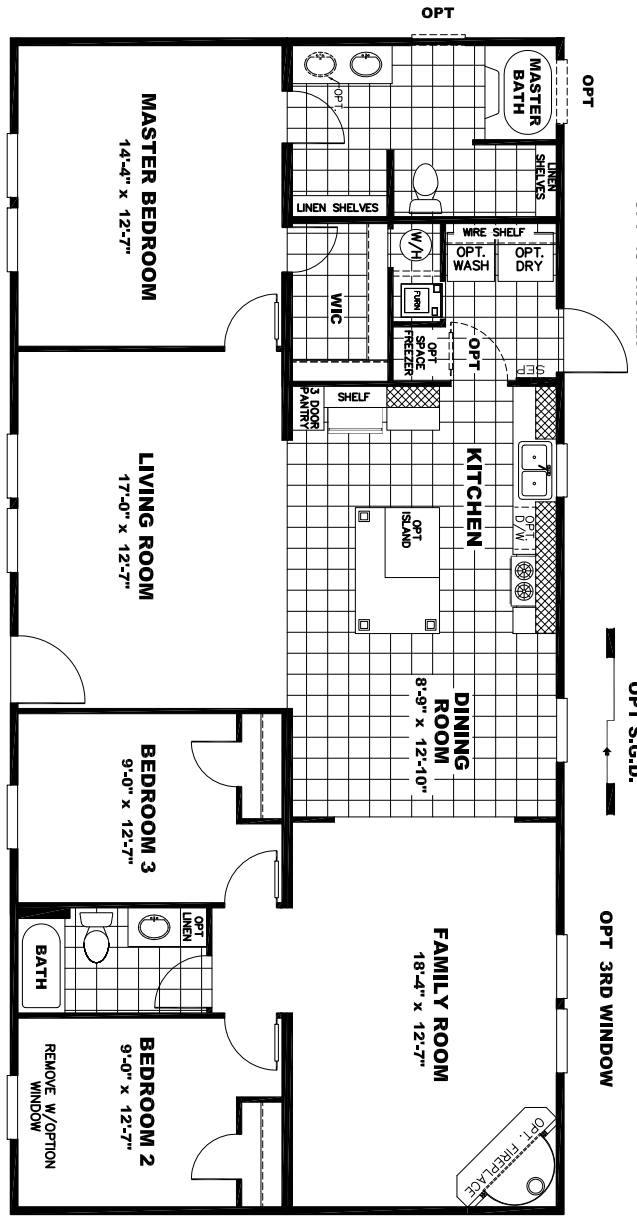
OPT S.G.D.



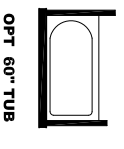
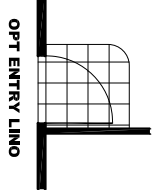
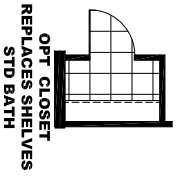
OPT 4TH BEDROOM
 OPT 3RD WINDOW



OPT WINDOW



OPT WINDOW



DRAKE

1475 SQ.FT.

Model #: **CEL28563V**

CELEBRATION

Drawing #:

38M120