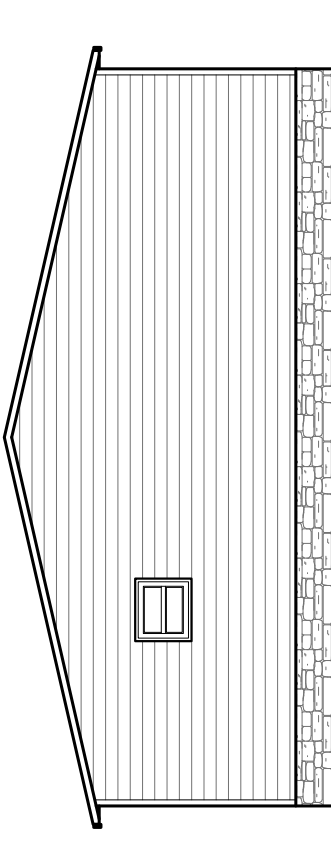
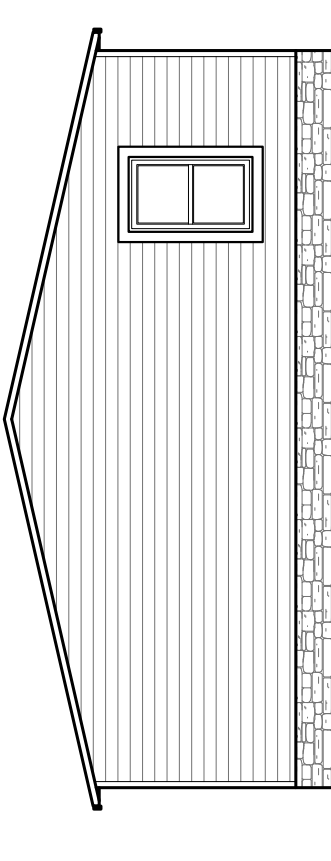




REAR ELEVATION



LEFT ELEVATION



RIGHT ELEVATION



FRONT ELEVATION

1680 SQ.FT. (STD PLAN "CONDITIONED")
 N/A SQ.FT. (W/OPT. PORCH/RECESS "CONDITIONED")

CMH MANUFACTURING	Model #: CEL325G3F	Drawing #:
	Date: 8/12/15	Scale: NTS
Product Designer: JDC	32 x 56 CELEBRATION	

ELEVATION

20 lb ROOF LOAD		SIDEWALL OPENING PIER LOAD			
		REQUIRED PIER LOAD (LBS)			
3	4	5	6	8	10
1244	1413	1581	1750	2088	2425

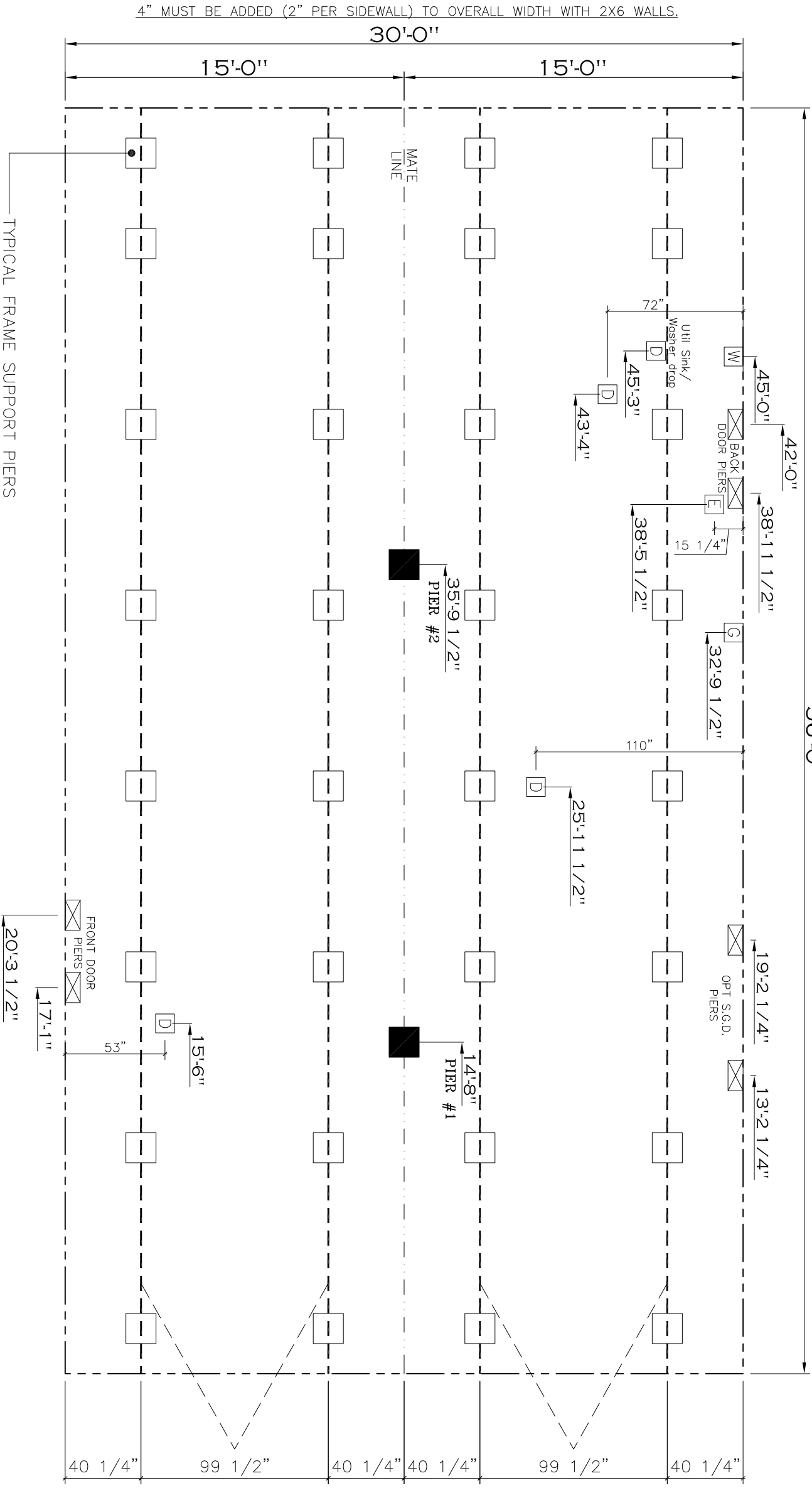
*FOR 30 lb & 40 lb ROOF LOAD REFER TO TABLES 7b & 7c IN THE INSTALLATION MANUAL.

20 psf Roof Live Load			
Column	Distance from Hitch	Pier Load (lbs)	
Pier # 1	14.67	5152	
2	35.792	5152	

30 psf Roof Live Load			
Column	Distance from Hitch	Pier Load (lbs)	
Pier # 1	14.67	7937	
2	35.792	7937	

40 psf Roof Live Load			
Column	Distance from Hitch	Pier Load (lbs)	
Pier # 1	14.67	9821	
2	35.792	9821	

4" MUST BE ADDED (2" PER ENDWALL) TO OVERALL LENGTH WITH 2X6 WALLS.
56'-0"



- GENERAL NOTES:
- PIER LOADS SHOWN ARE TO BE USED TO SIZE THE FOOTINGS BELOW THE MARRIAGEWALL FOR COLUMN SUPPORT PIERS. REFER TO TABLES 6b AND 6c IN THE INSTALLATION MANUAL FOR LOAD ON FRAME PIER FOOTINGS FOR HOMES THAT DO NOT REQUIRE PERIMETER BLOCKING. REFER TO TABLES 7b AND 7c IN THE INSTALLATION MANUAL FOR LOAD ON FRAME PIER FOOTINGS THAT REQUIRE PERIMETER BLOCKING. REFER TO TABLES 10 AND 10a TO DETERMINE FOOTING SIZE FOR ALL PIERS.
 - REFER TO TABLE 9 FOR PIER CONFIGURATION AND MAXIMUM ALLOWABLE HEIGHTS. CROSS REFERENCE THE PIER HEIGHT WITH THE MAXIMUM ALLOWABLE FLOOR HEIGHT LISTED IN THE FRAME TIEDOWN CHARTS (TABLE 18, 19, AND 20). FLOOR WIDTH SHOWN IS FOR STANDARD PRODUCT ONLY. CONTACT THE MFG PLANT FOR SPECIFICATIONS OF OPTIONS ORDERED.
 - SERVICE DROP LOCATIONS IDENTIFIED ARE APPROXIMATE. THE MAXIMUM SPACING FOR FRAME SUPPORT PIERS FOR 8" I-BEAMS IS 8 FEET, 10" & 12" I-BEAMS ARE 10 FEET.

PIER LEGEND	
	= SUPPORT UNDER MATING OPENING
	= SUPPORT AT MATING COLUMN
	= SUPPORT UNDER MATING WALL
	= PIER PORCH/RECESSED ENTRY
	= PIER MAIN BEAM
	= PIER PERIMETER
	= TIE-DOWN SUPPORT (QTY PER TRUSS)
	= GAS INLET

SERVICE DROP LEGEND	
	= ELECTRICAL DROP
	= WATER INLET
	= DWV PLUMBING DROP
	= GAS INLET

1680 SQ.FT. (STD PLAN "CONDITIONED")
N/A SQ.FT. (W/OPT. PORCH/RECESS "CONDITIONED")

CMH
MANUFACTURING

Model #: CEL32563F Drawing #: 38M14G
Date: 8/21/5 Scale: NTS

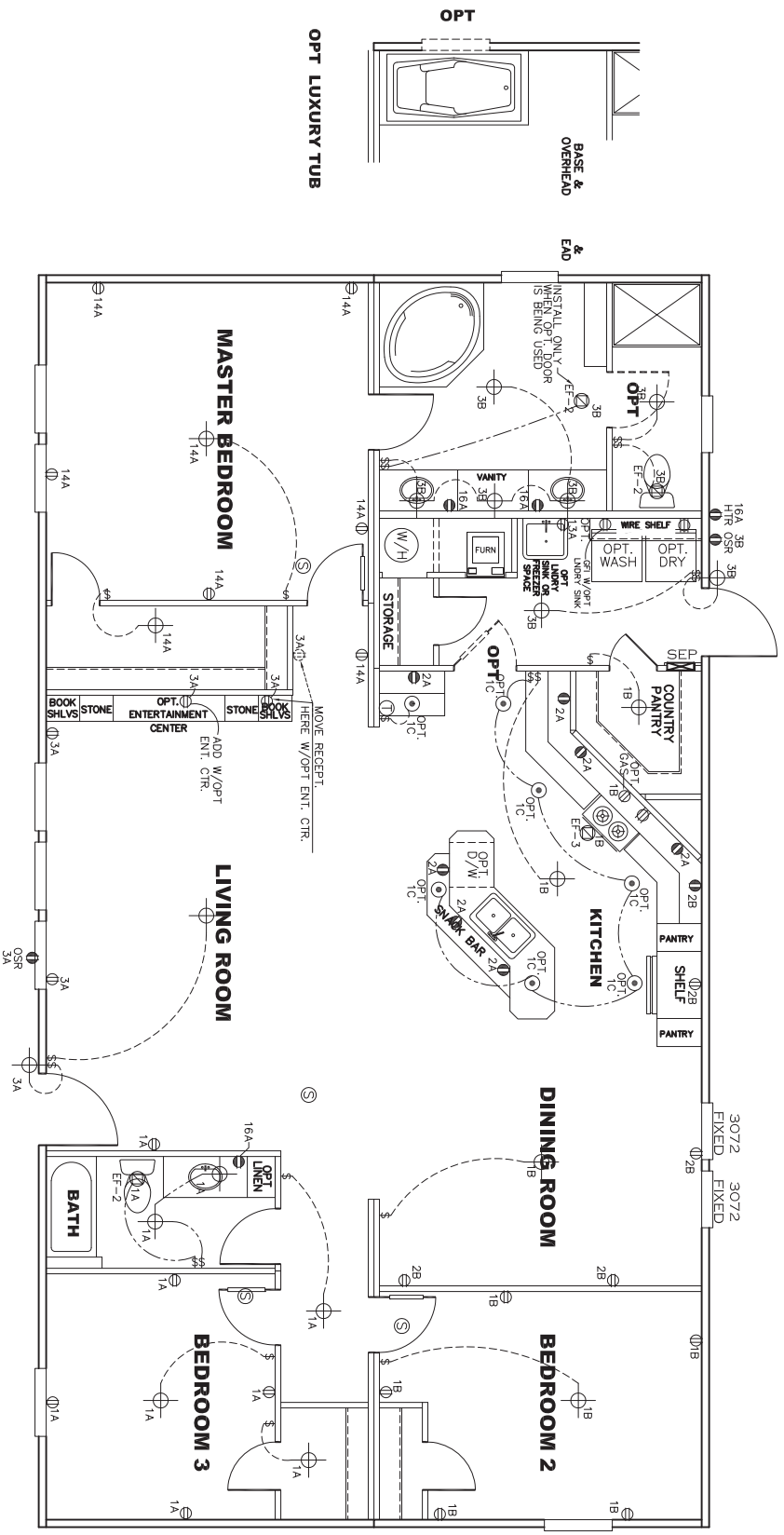
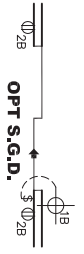
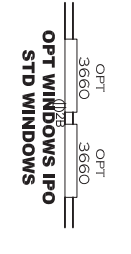
Product Designer: JDC

PIER LOADS

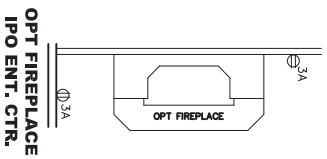
32 x 56 CELEBRATION

2 REVISION 3/9/16 ECR- JDC

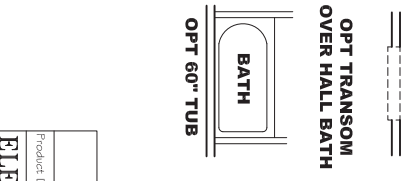
CIRCUIT #	CIRCUIT #	WIRE	BREAKER	CIRCUIT #	WIRE	BREAKER	CIRCUIT #	CIRCUIT #	WIRE	BREAKER
14-2	14-2	15-SP		4A, 4B	SEE NOTE #8		BATH /HTR	16A	12-2	20-SP
20-SP	12-2	20-SP		5B, 7A	SEE NOTE #8		OPT G/D/SP	9B	SEE NOTE #8	
20-SP	12-2	20-SP		6A, 8A, B, 10A, B	SEE NOTE #8		OPT S/P/A	11A, B	SEE NOTE #8	
20-SP	12-2	20-SP		9A	SEE NOTE #8		OPT FREEZER	13A	SEE NOTE #8	
20-SP	12-2	20-SP		4B	SEE NOTE #8					



- NOTES:
1. ALL CIRCUITS SHOWN ARE FOR REFERENCE AND MAY BE CHANGED BASED ON OPTIONAL COMPONENTS INSTALLED IN THE HOME.
 2. REFER TO EL SECTION OF THE DAP/A FOR SYMBOL CHART.
 3. EITHER LIGHT OR RECEPTACLE MUST CONNECT TO SWITCH.
 4. EF-1= 50 CFM EXHAUST FAN REQUIRED FOR THERMAL ZONE III THERMAL ZONES I & II MAY USE FAN OR WINDOW W/1.5 SQ. FT. OPENABLE GLASS.
 5. EF-2= 50 CFM EXHAUST FAN REQUIRED THERMAL ZONE I, II, AND III.
 6. EF-3= 100 CFM RANGE EXHAUST FAN, SWITCH AT HOOD.
 7. EF-4= WHOLE HOUSE VENTILATION PER REQUIREMENTS IN S-HV-10 & 10A OR M-HV-11 & 11A OF DAP/A.
 8. REFER TO EL SECTION OF THE DAP/A OR THE MFG. INSTALLATION INSTRUCTIONS FOR PROPER WIRE SIZE AND BREAKER SIZE FOR SPECIFIC APPLIANCE AND MODEL BEING INSTALLED.
 9. ALL SMOKE ALARMS TO BE LOCATED ON THE CEILING.
 10. DIMENSIONS SHOWN ON PRINT ARE APPROXIMATE AND TO BE USED ONLY AS A GUIDELINE.



APPROVED
REVISED
 AUG 15 2016
 FP-32-2028
 Federal Manufactured Home Construction And Safety Standards
APPROVED



1680 SQ.FT. (STD PLAN "CONDITIONED")
 N/A SQ.FT. (W/OPT. PORCH/RECESS "CONDITIONED")

Product Designer: JDC

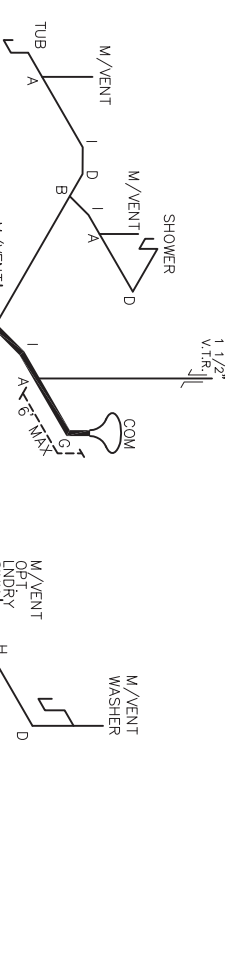
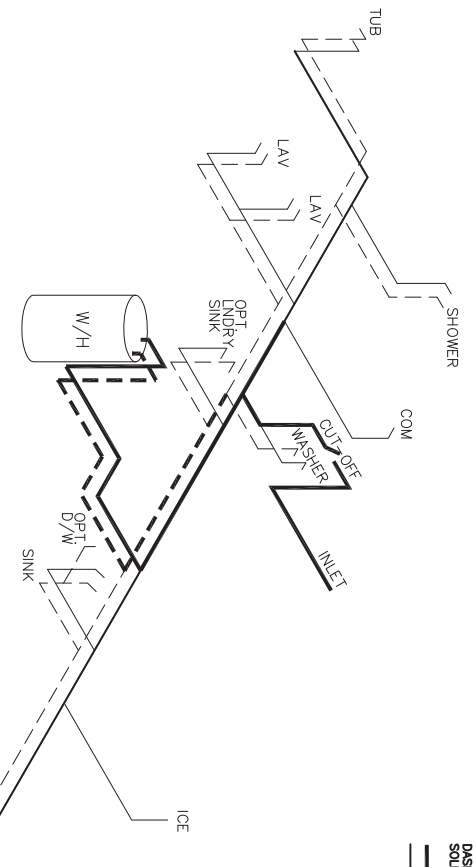
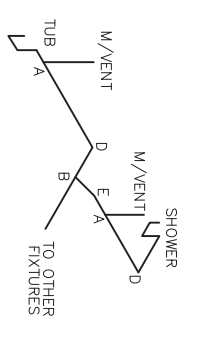
MANUFACTURING	Model #	PNH32563F	Drawing #
CMH	Director/215	Scale: NTS	38M146

32 x 56 PINEHURST

ELECTRICAL PLAN-06

REVISION 10/7/15 ECR-228479 JDC

NOTE:
 DASHED LINES INDICATES HOT WATER
 SOLID LINES INDICATES COLD WATER
 — = 3/4"
 — = 1/2"



DWV LINE SIZE CHART

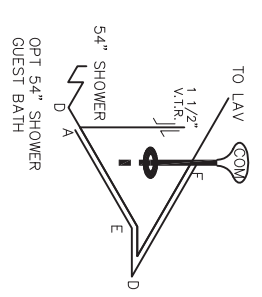
—	= 3"
—	= 2"
—	= 1 1/2"

LEGEND

A	SHORT TURN T-Y
B	LONG TURN T-Y
C	1/4 BEND
D	LONG SWEEP 1/4 BEND
E	45 ELL
F	DBL. SANITARY TEE
G	4x3 CLOSET ELL
H	DOUBLE ELL
I	22 1/2" ELL
J	45 Y
K	LONG TURN STREET ELBOW
L	45 FTG. ELL

APPROVED
REVISED
 JULY 14 2016
 FP-32-2028
 Federal Manufacture
 Home Construction
 And Safety Standards

1680 SQ.FT. (STD PLAN "CONDITIONED")
 N/A SQ.FT. (W/OPT. PORCH/RECESS "CONDITIONED")
CMH
 MANUFACTURING
 Model #: PNH32563F Drawing #: 38M146
 Date: 1/15 Scale: NTS
 Product Designer: JDC
D.W.V. and Supply Lines
 32 x 56 PINEHURST
 REVISION 7/1/16 ECR-347939 JDC

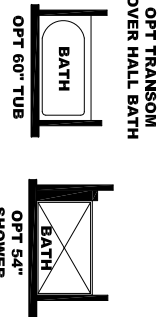
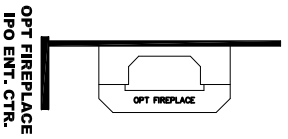
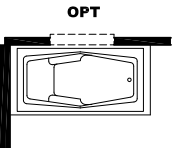
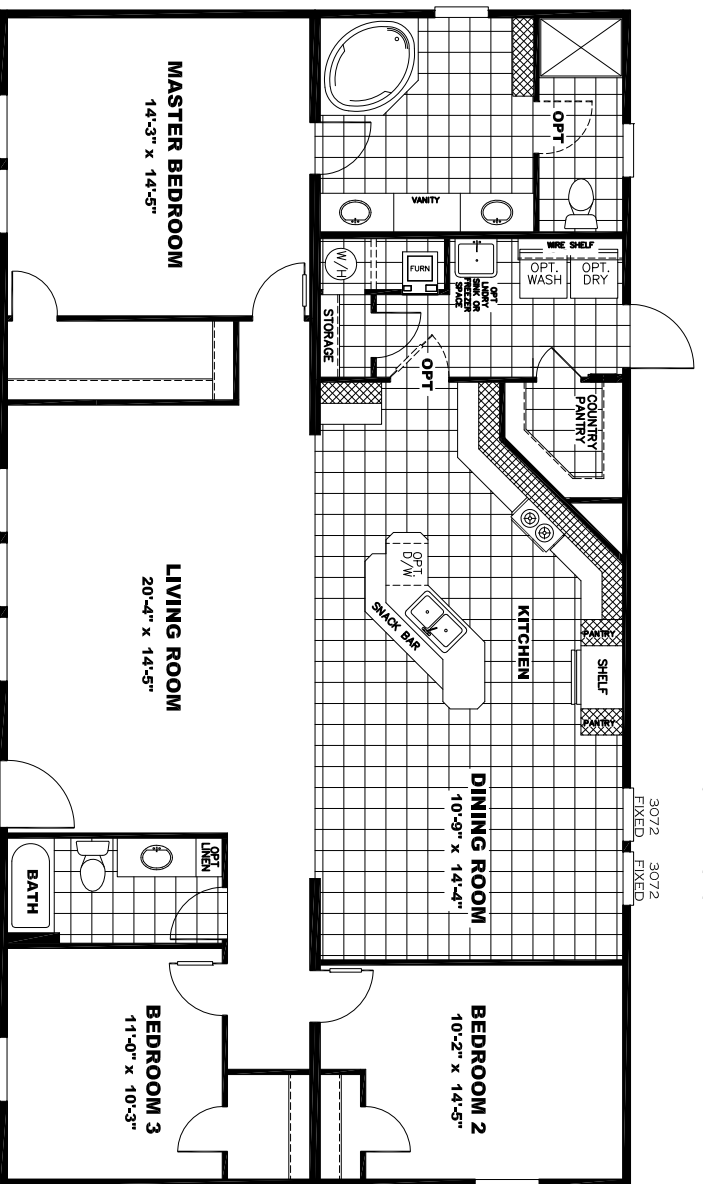


OPT S.G.D.

OPT 3660 OPT 3660

OPT WINDOWS IPO STD WINDOWS

3072 3072
FIXED FIXED



FESTIVUS
1680 SQ.FT.
Model #: CEL32563F
CELEBRATION
Drawing #:
38M146