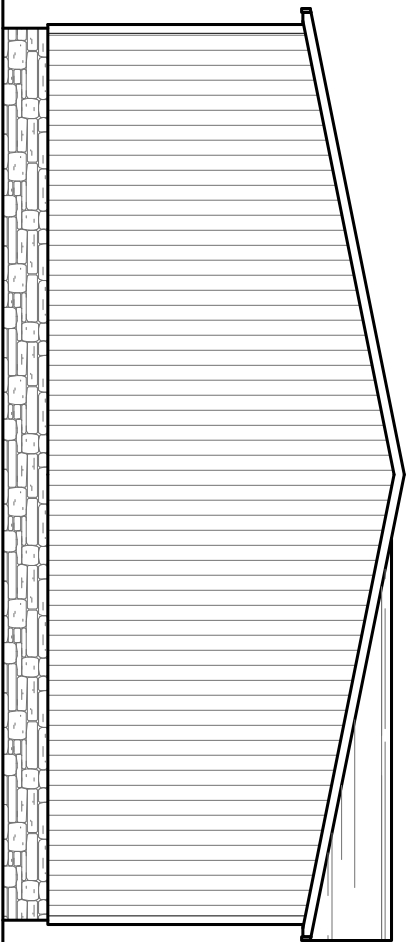
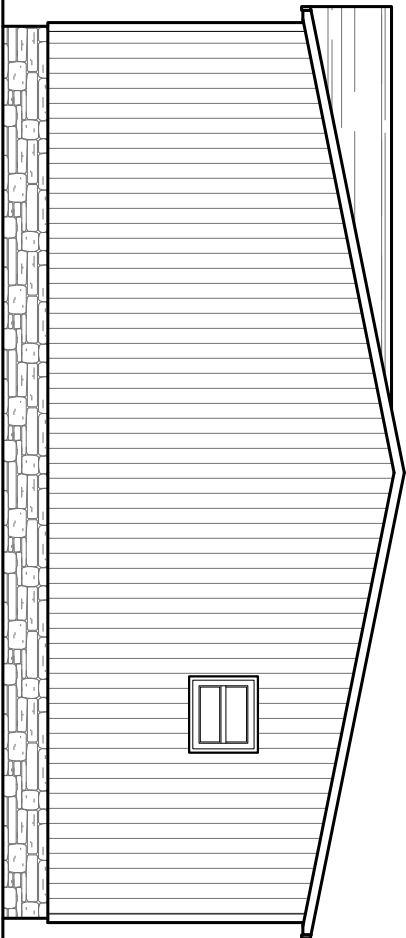


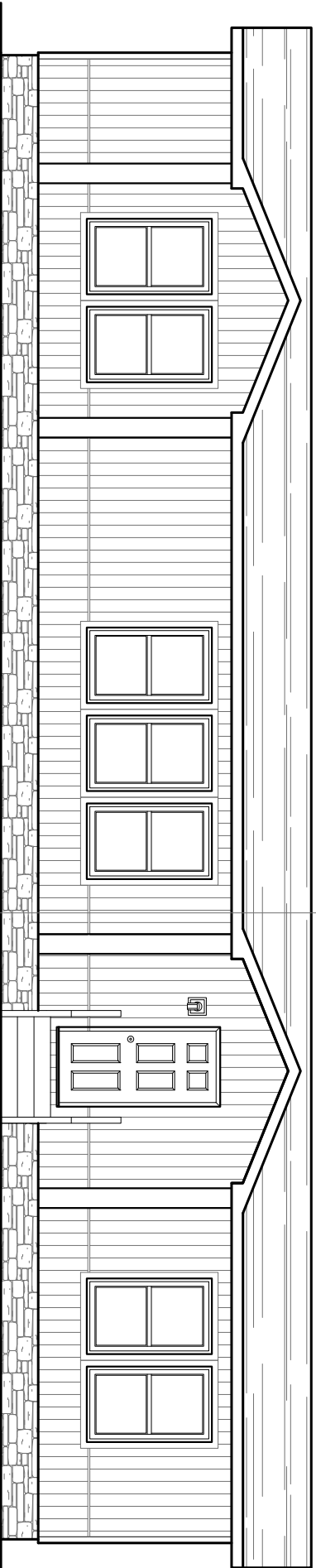
**REAR ELEVATION**



**LEFT SIDE ELEVATION**



**RIGHT SIDE ELEVATION**



**FRONT ELEVATION**

<b>1800 SQ. FT. (STD PLAN "COMMONED")</b>	
<b>SQ. FT. (W/OPT. PORCH/RECESS "COMMONED")</b>	
<b>CMH</b> MANUFACTURING	Model #: CE1 32G03V/
Product Designer: JDC	Date: 7/21/12
	Scale: N/A
<b>ELEVATION</b>	Drawing #: 32M138
	<b>32' X 60' CELEBRATION</b>

PIER LEGEND	
<input type="checkbox"/>	SUPPORT UNDER MAIN OPENING
<input checked="" type="checkbox"/>	SUPPORT AT MAIN COLUMN
<input checked="" type="checkbox"/>	SUPPORT UNDER MAIN WALL
<input checked="" type="checkbox"/>	PIER PORCH/RECESS ENTRY
<input type="checkbox"/>	PIER MAIN BEAM
<input type="checkbox"/>	PIER PERIMETER
<input checked="" type="checkbox"/>	TIE-DOWN SUPPORT (QTY PER TBL. W. SEE DETAIL D-6 IN FOUND. PKG.)

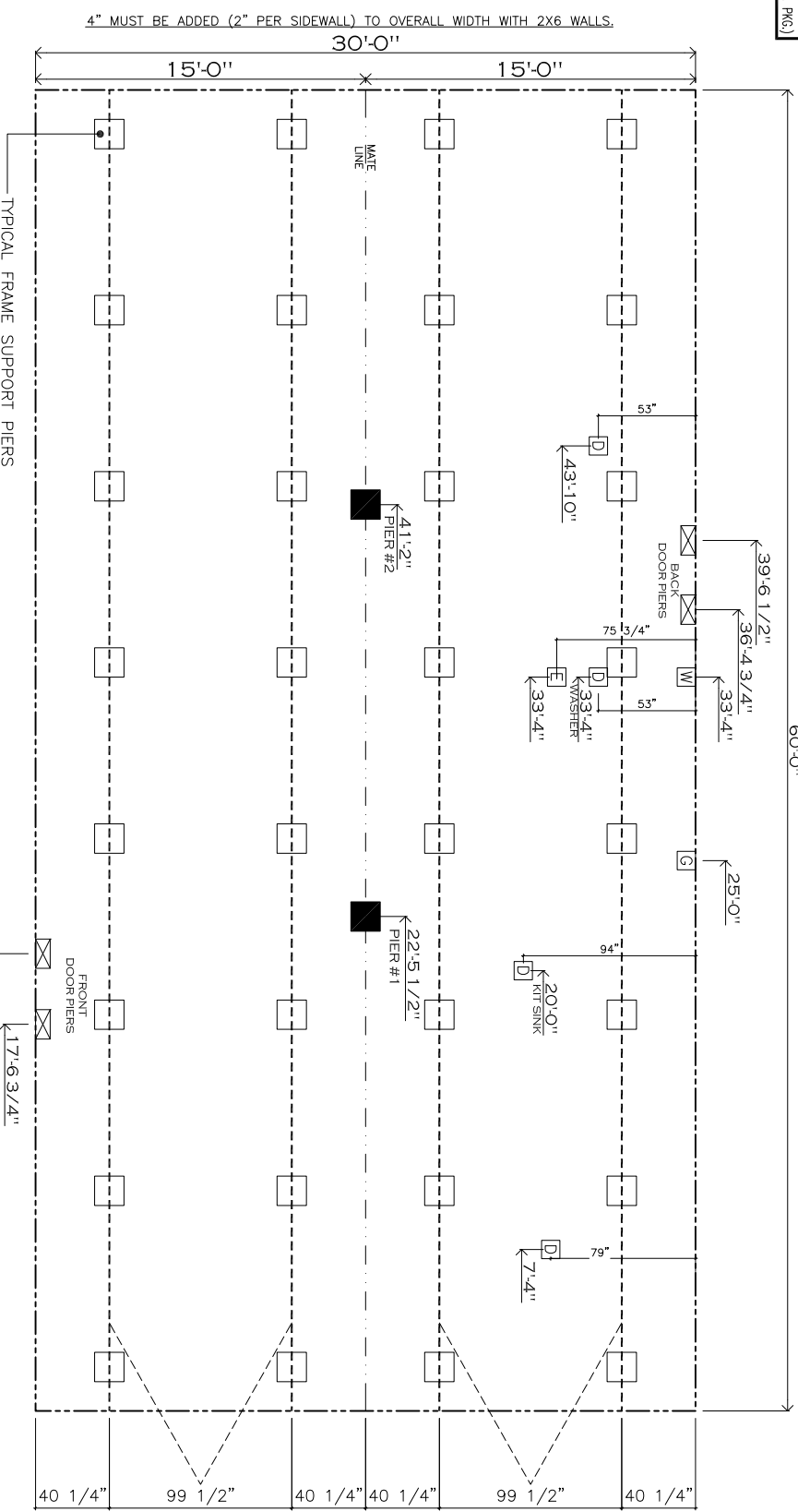
20 lb ROOF LOAD		30 psf ROOF LOAD		40 psf ROOF LOAD	
SIDEWALL OPENING	PIER LOAD	REQUIRED PIER LOAD (LBS)	Distance from Hitch	Pier Load (lbs)	Pier Load (lbs)
32" BOX WIDTH		1244	1413	1581	1750
				2088	2425

20 psf Roof Live Load		30 psf Roof Live Load		40 psf Roof Live Load	
Distance from Hitch	Pier Load (lbs)	Distance from Hitch	Pier Load (lbs)	Distance from Hitch	Pier Load (lbs)
1	22,458	1	22,458	1	22,458
2	41,167	2	41,167	2	41,167

20 psf Roof Live Load		30 psf Roof Live Load		40 psf Roof Live Load	
Distance from Hitch	Pier Load (lbs)	Distance from Hitch	Pier Load (lbs)	Distance from Hitch	Pier Load (lbs)
1	22,458	1	22,458	1	22,458
2	41,167	2	41,167	2	41,167

20 psf Roof Live Load		30 psf Roof Live Load		40 psf Roof Live Load	
Distance from Hitch	Pier Load (lbs)	Distance from Hitch	Pier Load (lbs)	Distance from Hitch	Pier Load (lbs)
1	22,458	1	22,458	1	22,458
2	41,167	2	41,167	2	41,167

20 psf Roof Live Load		30 psf Roof Live Load		40 psf Roof Live Load	
Distance from Hitch	Pier Load (lbs)	Distance from Hitch	Pier Load (lbs)	Distance from Hitch	Pier Load (lbs)
1	22,458	1	22,458	1	22,458
2	41,167	2	41,167	2	41,167



- GENERAL NOTES:
- PIER LOADS SHOWN ARE TO BE USED TO SIZE THE FOOTINGS BELOW THE MARRIAGEWALL FOR COLUMN SUPPORT PIERS. REFER TO TABLES 6b AND 6c IN THE INSTALLATION MANUAL FOR LOAD ON FRAME PIER FOOTINGS FOR HOMES THAT DO NOT REQUIRE PERIMETER BLOCKING. REFER TO TABLES 7b AND 7c IN THE INSTALLATION MANUAL FOR LOAD ON FRAME PIER FOOTINGS THAT REQUIRE PERIMETER BLOCKING. REFER TO TABLES 10 AND 10a TO DETERMINE FOOTING SIZE FOR ALL PIERS.
  - REFER TO TABLE 9 FOR PIER CONFIGURATION AND MAXIMUM ALLOWABLE HEIGHTS. CROSS REFERENCE THE PIER HEIGHT WITH THE MAXIMUM ALLOWABLE FLOOR HEIGHT LISTED IN THE FRAME TIEDOWN CHARTS (TABLE 18, 19, AND 20).
  - FLOOR WIDTH SHOWN IS FOR STANDARD PRODUCT ONLY. CONTACT THE MFG PLANT FOR SPECIFICATIONS OF OPTIONS ORDERED.
  - SERVICE DROP LOCATIONS IDENTIFIED ARE APPROXIMATE. THE MAXIMUM SPACING FOR FRAME SUPPORT PIERS FOR 8" I-BEAMS IS 8 FEET, 10" & 12" I-BEAMS ARE 10 FEET.

**SERVICE DROP LEGEND**

<b>E</b>	= ELECTRICAL DROP
<b>W</b>	= WATER INLET
<b>D</b>	= DWV PLUMBING DROP
<b>G</b>	= GAS INLET

1800 SQ.FT. (STD PLAN "CONDITIONED")  
 SQ.FT. (W/OPT. PORCH/RECESS "CONDITIONED")

**CMH**  
 MANUFACTURING

Product Designer: JDC

Model #: CE132G03V  
 Date: 7/21/14  
 32' x 60' CELEBRATION

Drawing #: 30M138

**PIER LOADS**

REVISED 3/9/16  
 JDC

CIRCUIT	CIRCUIT #	WIRE	BREAKER	CIRCUIT	CIRCUIT #	WIRE	BREAKER	CIRCUIT	CIRCUIT #	WIRE	BREAKER
LIGHT/RECEP	14A,B,C,D,3B,14A	14-2	15-SP	WATER HEATER	4A,6A	SEE NOTE #8		BATH/HTR	16A	12-2	20-SP
KITCHEN/DINING	2A,2B	12-2	20-SP	RANGE	5B,7A	SEE NOTE #8		OPT G/DRP	9B	SEE NOTE #8	
WASHER	12A	12-2	20-SP	FURNACE	6A,8A,B,10A,B	SEE NOTE #8		OPT SH/W	11A,B	SEE NOTE #8	
DRYER	5A,7B	SEE NOTE #8		OPT D/WASH	9A	SEE NOTE #8		FREEZER	N/A	SEE NOTE #9	
				SMOKE ALARM	4B	SEE NOTE #8					



OPT 54" SHOWER



OPT 60" TUB

OPT TRANSOM

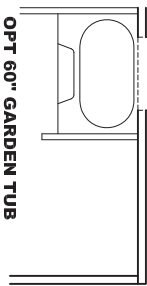
OVER HALL BATH

OPTION S.G.D.



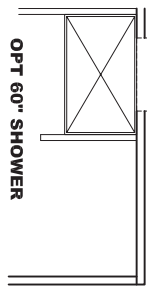
OPTION WINDOWS

OPT

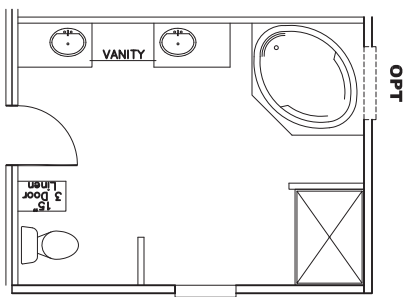
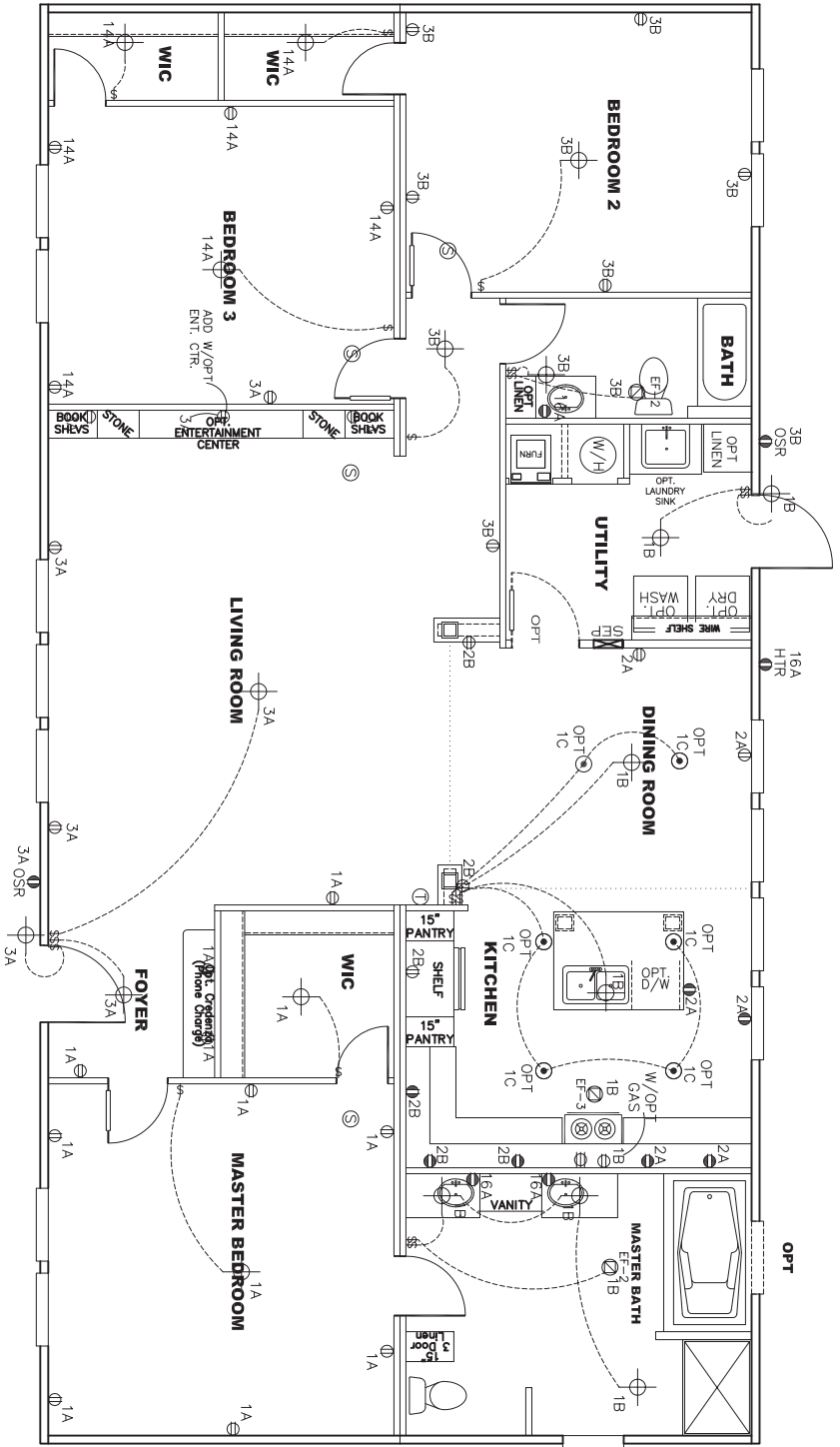


OPT 60" GARDEN TUB

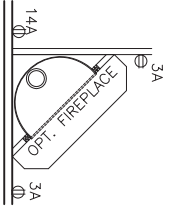
OPT TRANSOM



OPT 60" SHOWER

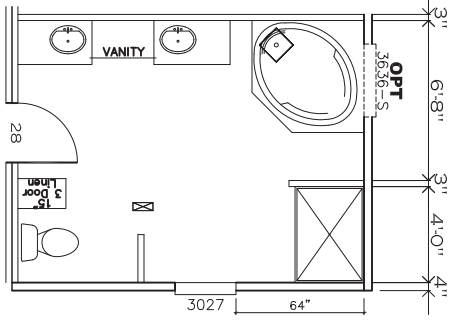
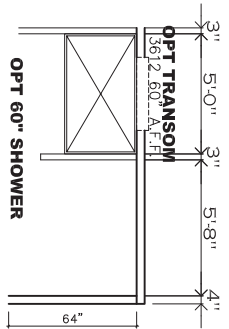
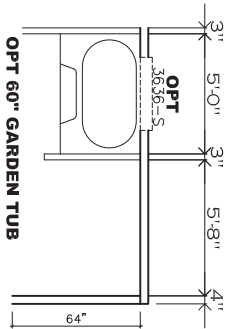
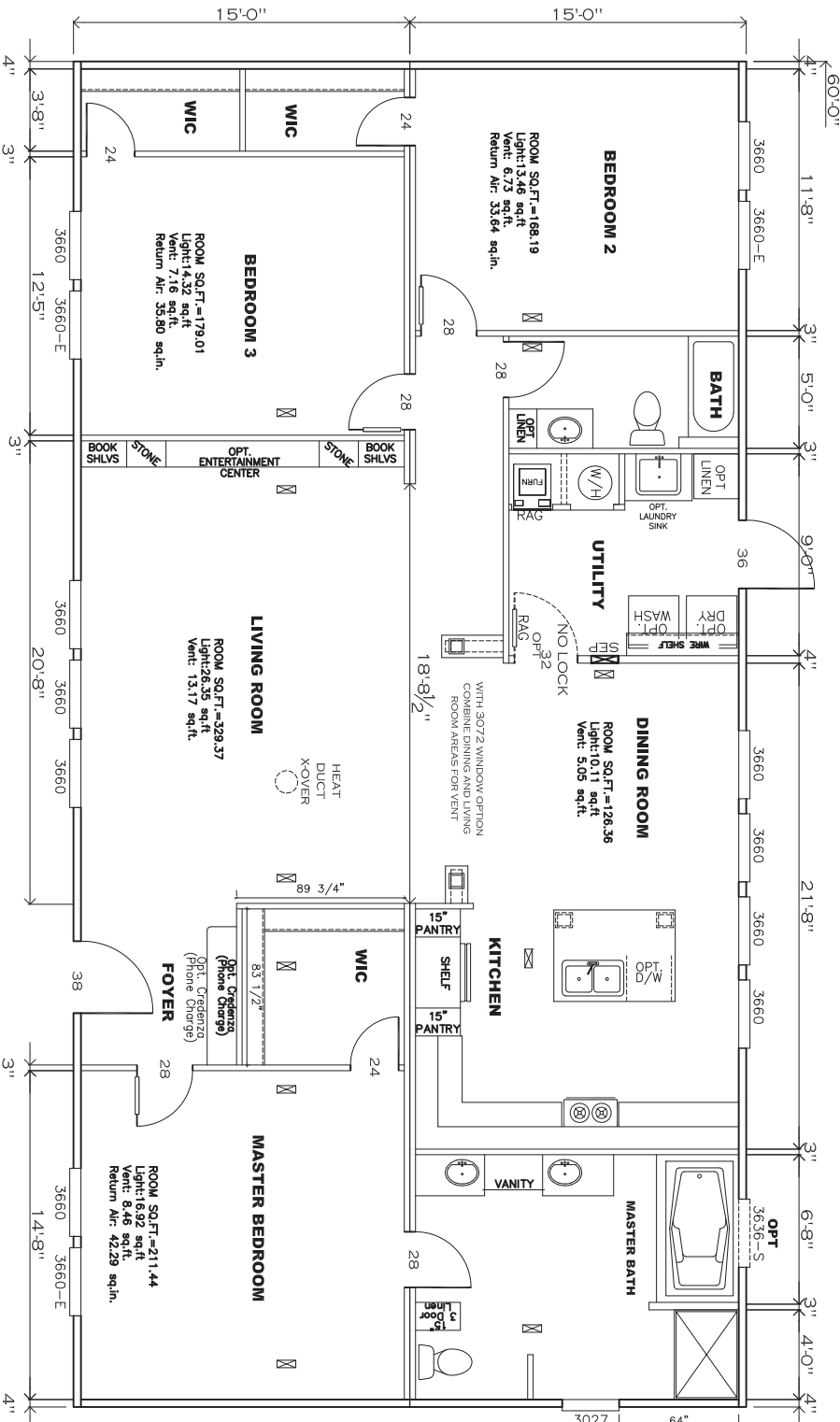


- NOTES:
1. ALL CIRCUITS SHOWN ARE FOR REFERENCE AND MAY BE CHANGED BASED ON OPTIONAL COMPONENTS INSTALLED IN THE HOME.
  2. REFER TO EL SECTION OF THE DAPA FOR SYMBOL CHART.
  3. EITHER LIGHT OR RECEPTACLE MUST CONNECT TO SWITCH.
  4. EF-1= 50 CFM EXHAUST FAN REQUIRED FOR THERMAL ZONE III THERMAL ZONES I & II MAY USE FAN OR WINDOW W/1.5 SQ. FT. OPENABLE GLASS.
  5. EF-2= 50 CFM EXHAUST FAN REQUIRED THERMAL ZONE I, II, AND III.
  6. EF-3= 100 CFM RANGE EXHAUST FAN, SWITCH AT HOOD.
  7. EF-4= WHOLE HOUSE VENTILATION PER REQUIREMENTS IN S-HV-10 & 10A OR M-HV-11 & 11A OF DAPA.
  8. REFER TO EL SECTION OF THE DAPA OR THE MFG. INSTALLATION INSTRUCTIONS FOR PROPER WIRE SIZE AND BREAKER SIZE FOR SPECIFIC APPLIANCE AND MODEL BEING INSTALLED.
  9. ALL SMOKE ALARMS TO BE LOCATED ON THE CEILING.
  10. DIMENSIONS SHOWN ON PRINT ARE APPROXIMATE AND TO BE USED ONLY AS A GUIDELINE.



**APPROVED**  
**REVISED**  
 OCT 19 2015  
 FP-32-1798  
 Federal Manufactured Home Construction And Safety Standards

1800 SQ.FT. (STD PLAN "CONDITIONED")  
 SQ.FT. (W/OPT. PORCH/RECESS "CONDITIONED")  
**CMH** MANUFACTURING  
 Model #: FN132G03V  
 Date: 7/21/14  
 32' x 60' PINEHURST  
 Drawing #: 32M136  
 Product Designer: JDC  
**ELECTRICAL PLAN-06**  
 REVISION 10/8/15 JDC

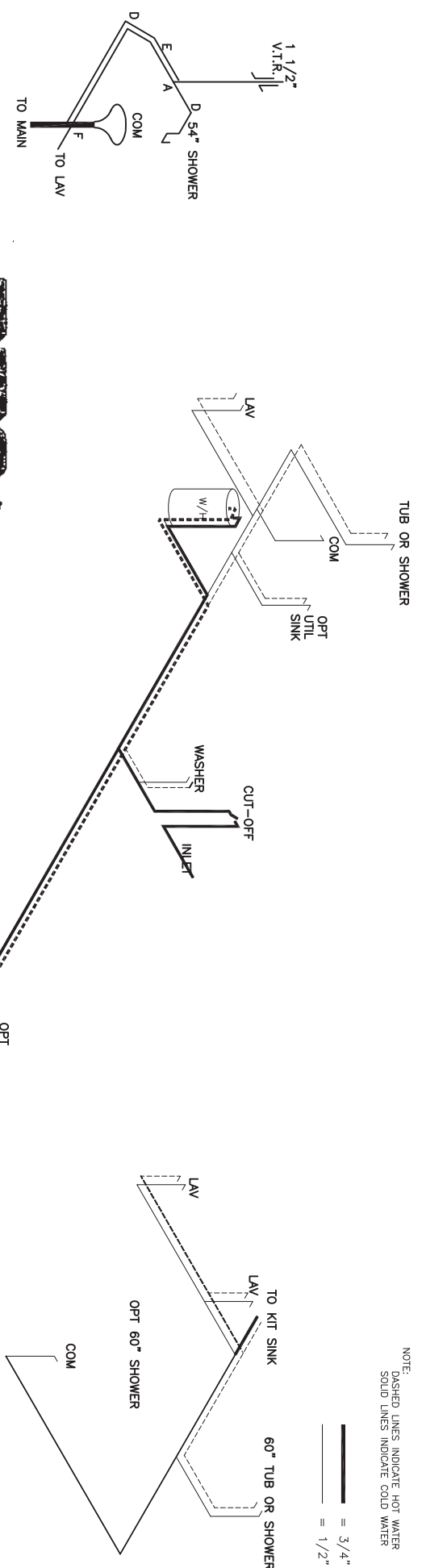


**APPROVED**  
**REVISED**  
 OCT 19 2015  
 FP-32-1798  
 Federal Manufactured Home Construction And Safety Standards

<b>FLOOR PLAN</b>	
Model #:	FNH132G03V
Date: 7/21/14	Revised: N/A
Product Designer:	JDC
Manufacturer:	CMH
Drawing #:	32M138
1800 S.Q.F.T. (STD PLAN "CONDITIONED") (W/OPT. PORCH/RECESS "CONDITIONED")	
32' x 60' PINEHURST 4 REVISION 10/5/15 JDC ECR-228479	

NOTE:  
DASHED LINES INDICATE HOT WATER  
SOLID LINES INDICATE COLD WATER

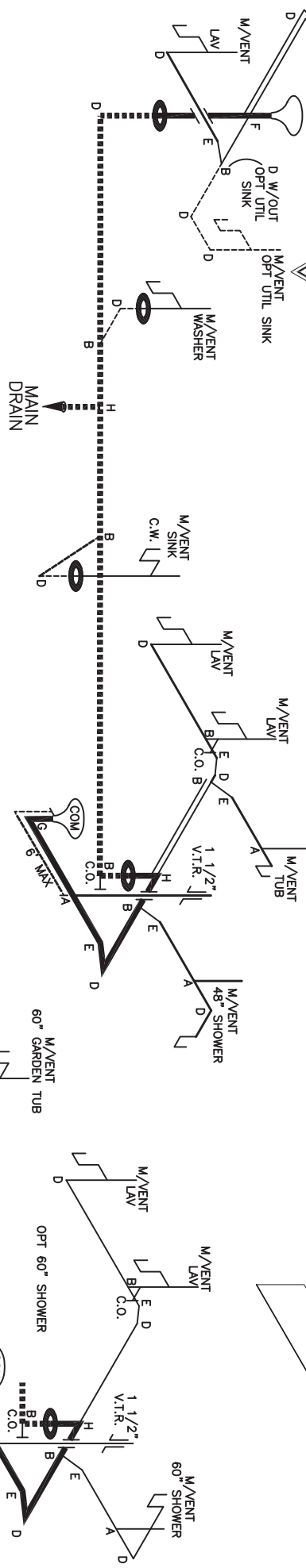
— = 3/4"  
— = 1/2"



**APPROVED**  
**REVISED**  
JULY 25 2016  
**APPROVED**

Federal Manufactured  
Home Construction  
And Safety Standards

**DWV LINES**



LEGEND

A	SHORT TURN T-Y
B	LONG TURN T-Y
C	1/4 BEND
D	LONG SWEEP 1/4 BEND
E	45 ELL
F	DBL. SANITARY TEE
G	4x3 CLOSET ELL
H	DOUBLE ELL
I	22 1/2" ELL
J	45 Y
K	LONG TURN STREET ELBOW
L	45 FTG. ELL

DWV LINE SIZE CHART

—	= 3"
—	= 2"
—	= 1 1/2"

FP-32-1798

1800 SQ.FT. (STD PLAN "CONDITIONED")  
30 SQ.FT. (W/OPT. PORCH/RECESS "CONDITIONED")

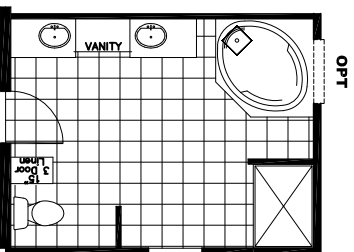
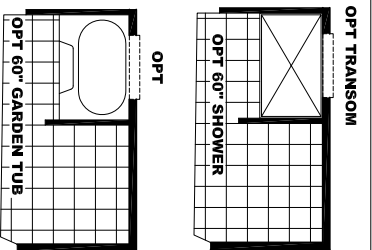
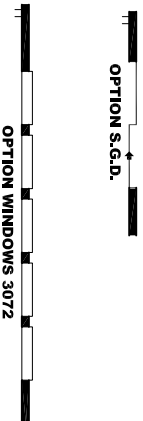
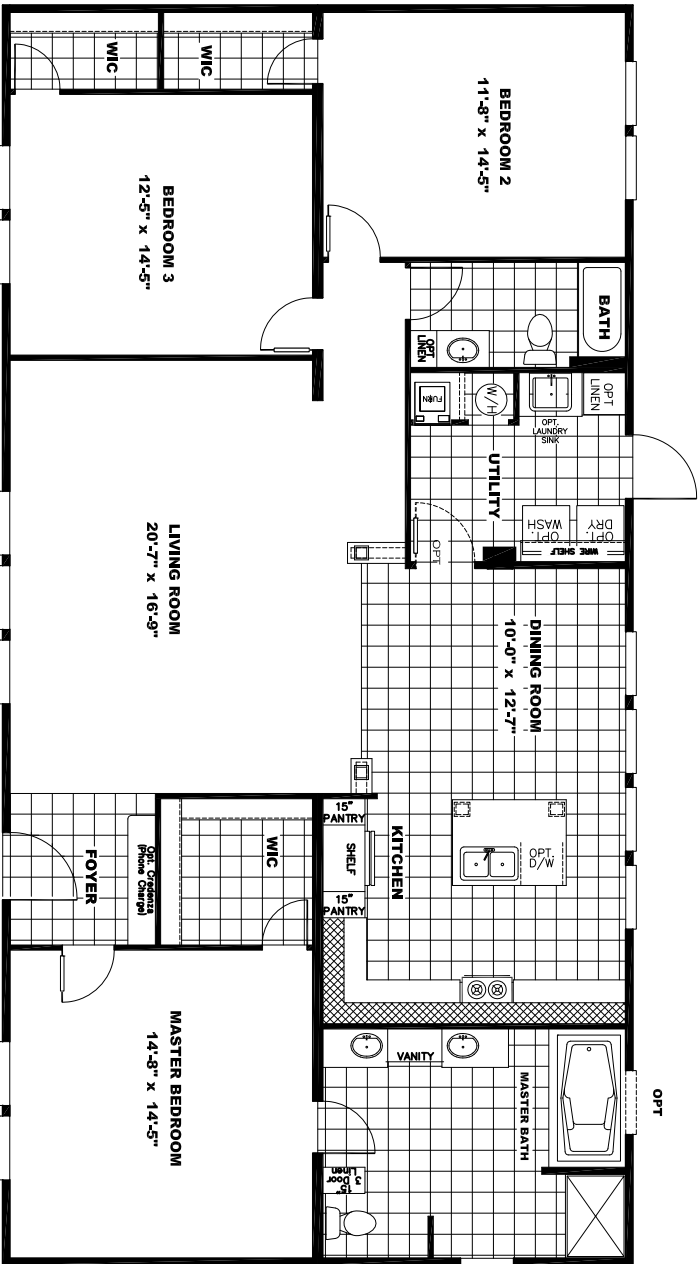
Product Designer: JDC

<b>GMH</b>	Model #:	PH132E03V	Drawing #:	
MANUFACTURING	Date:	7/21/14	Scale:	N/A
				30M1.36

32' x 60' PINEHURST

**D.W.V. and Supply Lines**

5/4/16 ECR-321086 JDC



**THE MESQUITE**  
 1800 SQ.FT.  
 Model #: CEL32603V  
**CELEBRATION**  
 Drawing #:  
 38M138