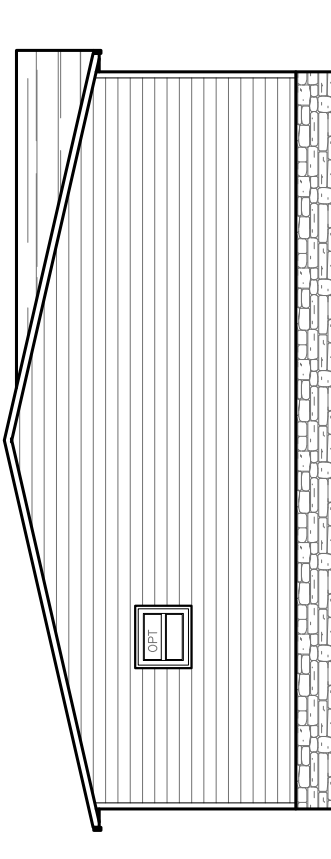
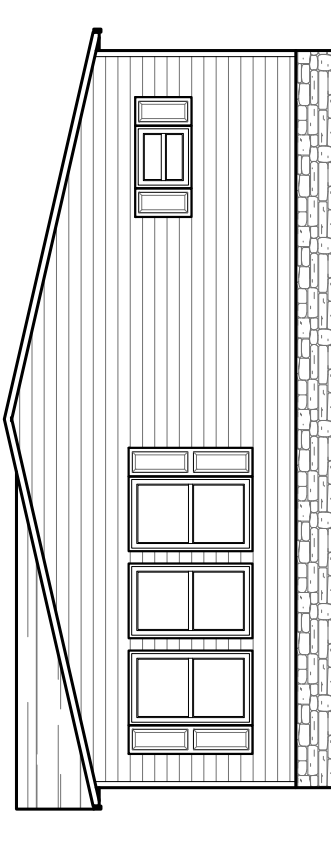


REAR ELEVATION



LEFT SIDE ELEVATION



RIGHT SIDE ELEVATION



FRONT ELEVATION

2260 SQ.FT. (STD PLAN "CONDITIONED")
 N/A SQ.FT. (W/OPT. PORCH/RECESS "CONDITIONED")

CMH
 MANUFACTURING

Model #: CEL32764V Drawing #: 38M127
 Date: 9-25-13 Scale: NTS

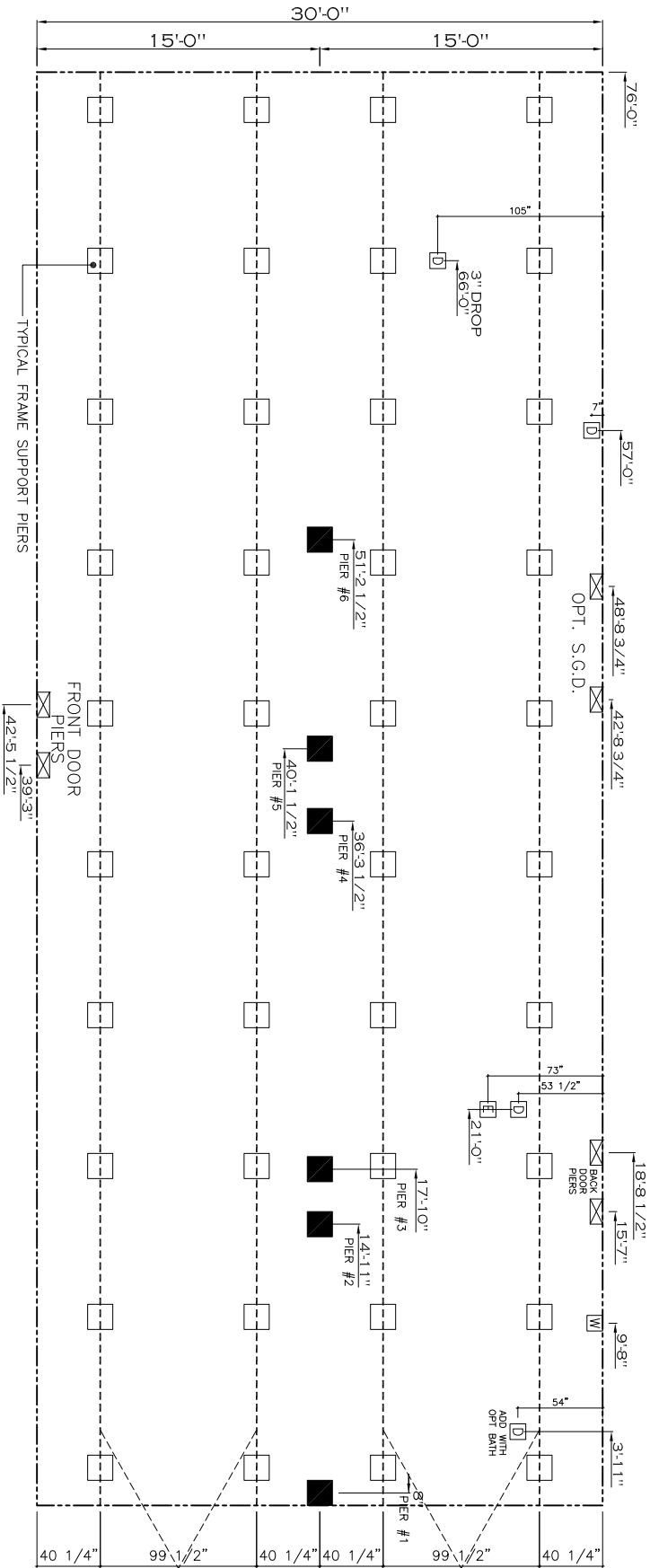
Product Designer: HARMONB 32 X 76 CELEBRATION

ELEVATION

MARRIAGEWALL COLUMN SUPPORT LOADS AND LOCATIONS

20 lb ROOF LOAD SIDEWALL OPENING PIER LOAD 32" BOX WIDTH	SIDEWALL OPENING (FT)					
	3	4	5	6	8	10
	1237	1405	1572	1740	2075	2410

*FOR 30 lb & 40 lb ROOF LOAD REFER TO TABLES 7b & 7c IN THE INSTALLATION MANUAL.



Column Pier #	Distance from Hitch	Pier Load (lbs)
1	0.334	3681
2	14.917	3681
3	17.833	4533
4	36.292	4533
5	40.125	2894
6	51.209	2894

Column Pier #	Distance from Hitch	Pier Load (lbs)
1	0.334	5975
2	14.917	5975
3	17.833	7138
4	36.292	7138
5	40.125	4925
6	51.209	4925

Column Pier #	Distance from Hitch	Pier Load (lbs)
1	0.334	7369
2	14.917	7369
3	17.833	8822
4	36.292	8822
5	40.125	6057
6	51.209	6057

- GENERAL NOTES:
- PIER LOADS SHOWN ARE TO BE USED TO SIZE THE FOOTINGS BELOW THE MARRIAGEWALL FOR COLUMN SUPPORT PIERS. REFER TO TABLES 6b AND 6c IN THE INSTALLATION MANUAL FOR LOAD ON FRAME PER FOOTINGS FOR HOMES THAT DO NOT REQUIRE PERIMETER BLOCKING. REFER TO TABLES 7b AND 7c FOR THE MARRIAGEWALL PERIMETER BLOCKING. REFER TO TABLES 10 AND 10a TO DETERMINE PERIMETER BLOCKING. REFER TO TABLES 10 AND 10a TO DETERMINE FOOTING SIZE FOR ALL PIERS.
 - REFER TO TABLE 9 FOR PIER CONFIGURATION AND MAXIMUM ALLOWABLE HEIGHTS. CROSS REFERENCE THE PIER HEIGHT WITH THE MAXIMUM ALLOWABLE FLOOR HEIGHT LISTED IN THE FRAME TIE-DOWN CHARTS (TABLE 18, 19 AND 20) FLOOR WIDTH SHOWN IS FOR STANDARD PRODUCT ONLY. CONTACT THE MFG PLANT FOR SPECIFICATIONS OF OPTIONS ORDERED.
 - SERVICE DROP LOCATIONS IDENTIFIED ARE APPROXIMATE. THE MAXIMUM SPACING FOR 8" I-BEAMS IS 8 FEET, 10" & 12" I-BEAMS ARE 10 FEET.

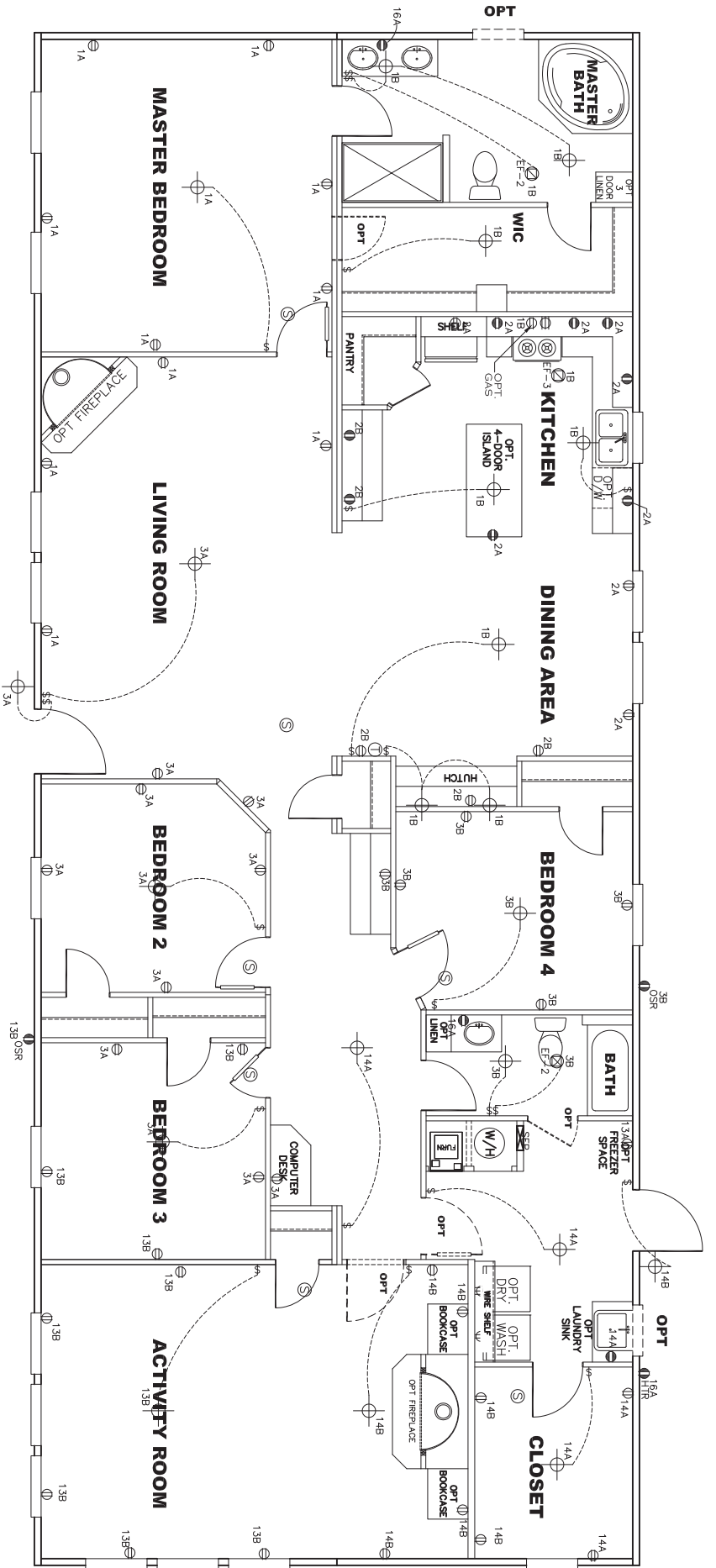
PIER LEGEND	
□	= SUPPORT UNDER MAINING OPENING
■	= SUPPORT AT MAINING COLUMN
▨	= SUPPORT UNDER MAINING WALL
■	= PER PORCH/RECESSD ENTRY
□	= PER MAIN BEAM
▨	= PER PERIMETER

SERVICE DROP LEGEND	
⊞	= ELECTRICAL DROP
⊞	= WATER INLET
⊞	= DWV PLUMBING DROP
⊞	= GAS INLET

2280 SQ.FT. (STD PLAN "CONDITIONED")
 N/A SQ.FT. (W/OPT. PORCH/RECESS "CONDITIONED")

Product Designer: HARRINGTON	Model #: CE132764V	Drawing #: 38M1 27
MANUFACTURING	Date: 9-25-13	Scale: NTS

PIER LOADS



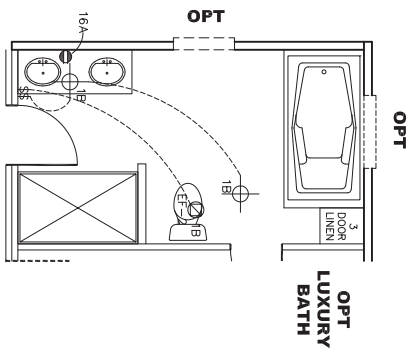
NOTES:

- 1) ALL CIRCUITS SHOWN ARE FOR REFERENCE AND MAY BE CHANGED BASED ON OPTIONAL COMPONENTS INSTALLED IN THE HOME.
- 2) REFER TO EL SECTION OF THE DAPLA FOR SYMBOL CHART.
- 3) INDICATES EITHER LIGHT OR RECEPTACLE MUST CONNECT TO SWITCH.
- 4) EF-1= 50 CFM EXHAUST FAN REQUIRED FOR THERMAL ZONE III. THERMAL ZONES I & II MAY USE FAN OR WINDOW W/1.5 SQ. FT. OPENABLE QUASS.
- 5) EF-2= 50 CFM EXHAUST FAN REQUIRED THERMAL ZONE I, II, AND III.
- 6) EF-3= 100 CFM RANGE EXHAUST FAN, SWITCH AT HOOD.
- 7) EF-4= WHOLE HOUSE VENTILATION PER REQUIREMENTS IN S-HV-10 & 10A OR M-HV-11 & 11A OF DAPLA.
- 8) REFER TO EL SECTION OF THE DAPLA OR THE MFG. INSTALLATION INSTRUCTIONS FOR PROPER WIRE SIZE AND BREAKER SIZE FOR SPECIFIC APPLIANCE AND MODEL BEING INSTALLED.
- 9) ALL SMOKE ALARMS TO BE LOCATED ON THE CEILING.
- 10) DIMENSIONS SHOWN ON PRINT ARE APPROXIMATE AND TO BE USED ONLY AS A GUIDELINE.

CIRCUIT	CIRCUIT #	WIRE	BREAKER	CIRCUIT	CIRCUIT #	WIRE	BREAKER	CIRCUIT	CIRCUIT #	WIRE	BREAKER
UHT/RECP	1A,3A,B,13B,14B	14-2	15-SP	WATER HEATER	4A,6B	SEE NOTE #8	SEE NOTE #8	BATHROOM	16A	12-2	20-SP
KITCHEN	2A,2B	12-2	20-SP	RANGE	5B,7A	SEE NOTE #8	SEE NOTE #8	OPT SPT/HP/DISC	99	SEE NOTE #8	SEE NOTE #8
WASHER	12A	12-2	20-SP	FLURINACE	6A,8A,B,10A,B	SEE NOTE #8	SEE NOTE #8	OPT SPT/HP/DISC	11A,B	SEE NOTE #8	SEE NOTE #8
DRYER	5A,7B	SEE NOTE #8		SMOKE ALARM	4B	SEE NOTE #8	SEE NOTE #8	FREZZER	13A	SEE NOTE #8	SEE NOTE #8

APPROVED
REVISED
 AUG 15 2016
 F.P.-32-1649
 Federal Manufactured Home Construction And Safety Standards
APPROVED

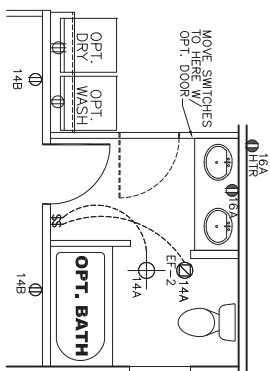
2280 SQ.FT. (STD PLAN "CONDITIONED")
 N/A SQ.FT. (W/OPT. PORCH/RECESS "CONDITIONED")
CMH MANUFACTURING
 Model #: FNI132764V Drawing #: 30M1 27
 Dates: 2-13 Scale: NTS
 Product Designer: HARKOND
ELECTRICAL PLAN-06
 2/REVISION ECR-228480
 10/8/15 JDC



OPT TRANSOM OVER HALL BATH



OPT 60\"/>



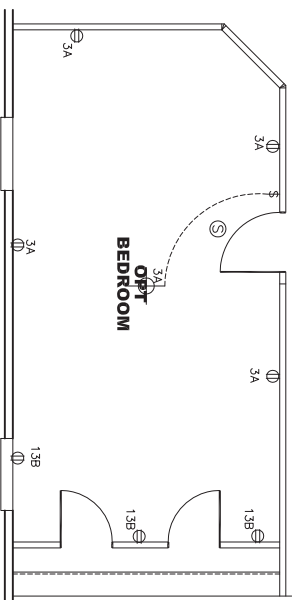
OPT. 60\"/>

OPT WINDOW OVER MASTER BATH TUB



NOTES:

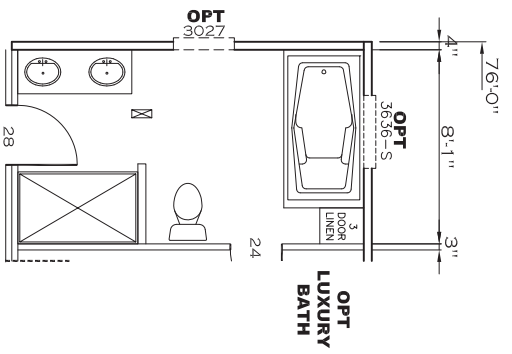
- 1) ALL CIRCUITS SHOWN ARE FOR REFERENCE AND MAY BE CHANGED BASED ON OPTIONAL COMPONENTS INSTALLED IN THE HOME.
- 2) REFER TO EL SECTION OF THE DAPIA FOR SYMBOL CHART.
- 3) INDICATES EITHER LIGHT OR RECEPTACLE MUST CONNECT TO SWITCH.
- 4) EF-1= 50 CFM EXHAUST FAN REQUIRED FOR THERMAL ZONE III THERMAL ZONES I & II MAY USE FAN OR WINDOW W/1.5 SQ. FT. OPENABLE GLASS.
- 5) EF-2= 50 CFM EXHAUST FAN REQUIRED THERMAL ZONE I, II, AND III.
- 6) EF-3= 100 CFM RANGE EXHAUST FAN, SWITCH AT HOOD.
- 7) EF-4= WHOLE HOUSE VENTILATION PER REQUIREMENTS IN S-HV-10 & 10A OR M-HV-11 & 11A OF DAPIA.
- 8) REFER TO EL SECTION OF THE DAPIA OR THE MFG. INSTALLATION INSTRUCTIONS FOR PROPER WIRE SIZE AND BREAKER SIZE FOR SPECIFIC APPLIANCE AND MODEL BEING INSTALLED.
- 9) ALL SMOKE ALARMS TO BE LOCATED ON THE CEILING.
- 10) DIMENSIONS SHOWN ON PRINT ARE APPROXIMATE AND TO BE USED ONLY AS A GUIDELINE.



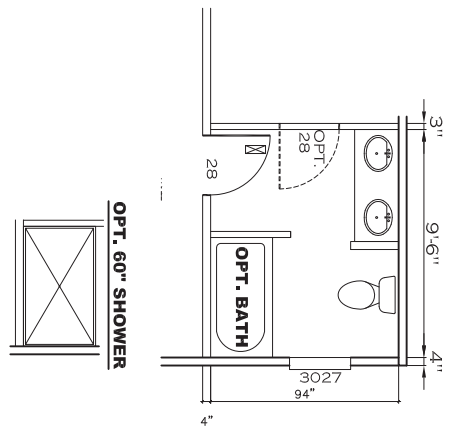
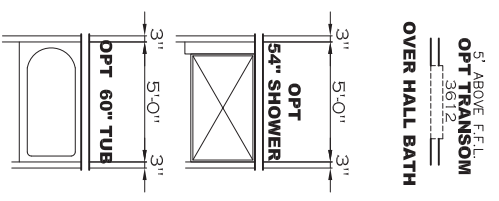
CIRCUIT	CIRCUIT #	WIRE	BREAKER	CIRCUIT	CIRCUIT #	WIRE	BREAKER	CIRCUIT	CIRCUIT #	WIRE	BREAKER
UBH/RECP	1A,3A,B1,B3,14A,B	14-2	15-SP	WATER HEATER	4A,BB	SEE NOTE #8		BATHROOM	16A	12-2	20-SP
KITCHEN	2A,2B	12-2	20-SP	RANGE	5B,7A	SEE NOTE #8		OPT SRY/HP/DKG	99	SEE NOTE #8	
WASHER	12A	12-2	20-SP	FURNACE	6A,8A,B,10A,B	SEE NOTE #8		OPT SRY/HP/DKG	11A,B	SEE NOTE #8	
DRYER	5A,7B	SEE NOTE #8		OPT D/WASH	9A	SEE NOTE #8		FREEZER	13A	SEE NOTE #8	
				SMOKE ALARM	4B	SEE NOTE #8					

APPROVED
 AUG 15 2016
REVISED
 FEDERAL MANUFACTURED HOME CONSTRUCTION AND SAFETY STANDARDS
APPROVED

2280 SQ.FT. (STD PLAN "CONDITIONED")
 N/A SQ.FT. (W/OPT. PORCH/RECESS "CONDITIONED")
CMH MANUFACTURING
 Model # FIN132764V Drawing # 30M1 27
 Date: 8-13-13 Scale: NTS
ELEC. PAGE OPTIONS-06
 Product Designer: HARKOMB
 32 X 76 PINEHURST
REVISION ECR-228480
 10/8/15 JDC



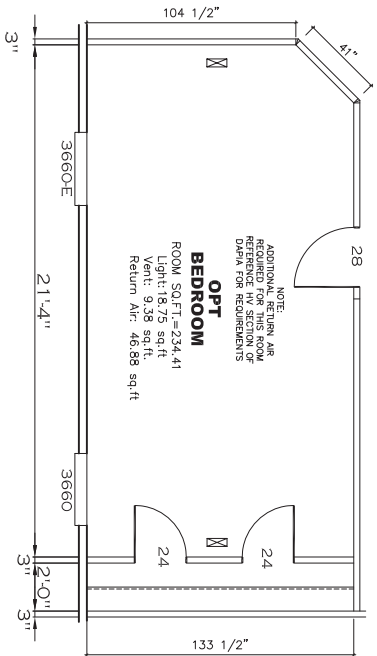
OPT 3636-S
OPT WINDOW OVER
MASTER BATH TUB



APPROVED
REVISED
OCT 19 2015
Federal Manufactured
Home Construction
And Safety Standards

FWG

APPROVED



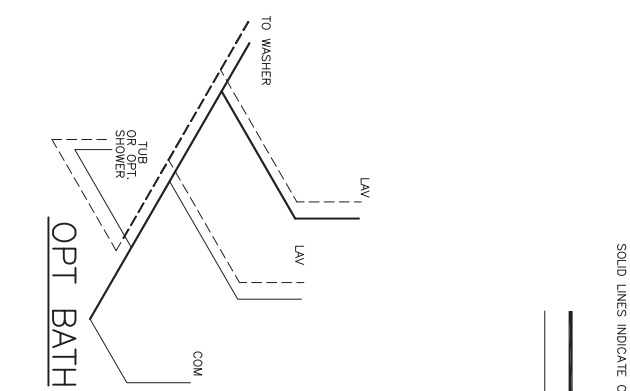
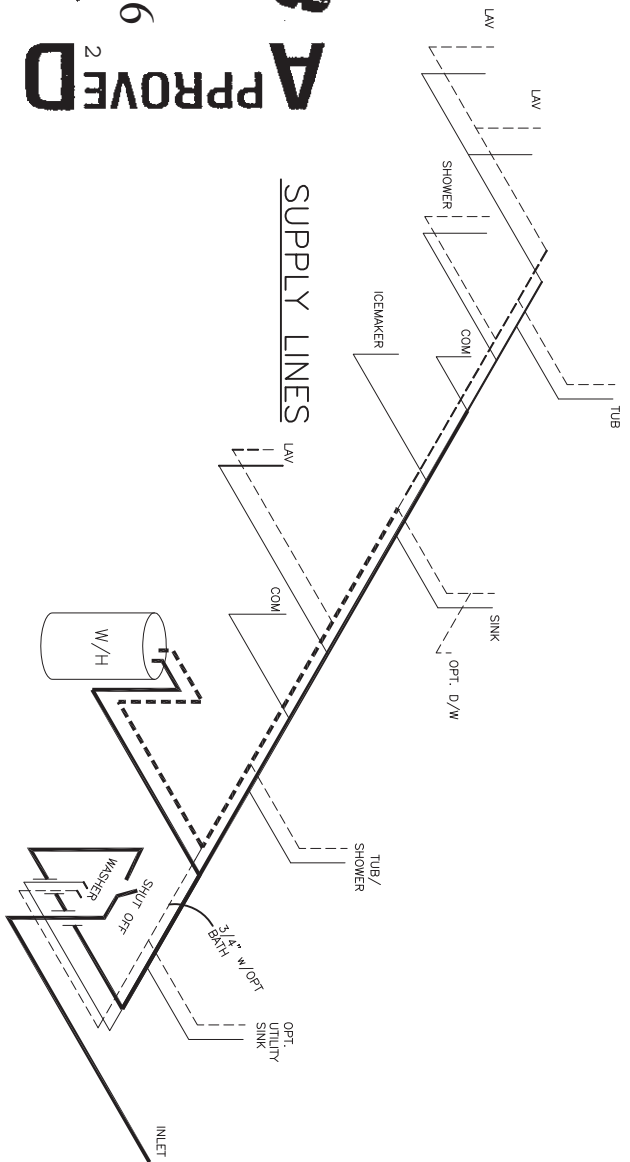
FP-32-1649

2280 SQ.FT. (STD PLAN "CONDITIONED")	
N/A SQ.FT. (W/OPT. PORCH/RECESS "CONDITIONED")	
CMH MANUFACTURING	Model #: FNIH327G4V Drawing #: 38M1 27
Product Designer: HARKOMB	Date: 8-25-13 Scale: NTS
FLOOR PLAN OPTIONS	
1 REVISION 10/8/15 ECR-228480 JDC	

NOTE:
DASHED LINES INDICATE HOT WATER
SOLID LINES INDICATE COLD WATER



APPROVED
D W V G
REVISED
MAR 14 2016
Federal Manufactured
Home Construction
And Safety Standards
APPROVED²



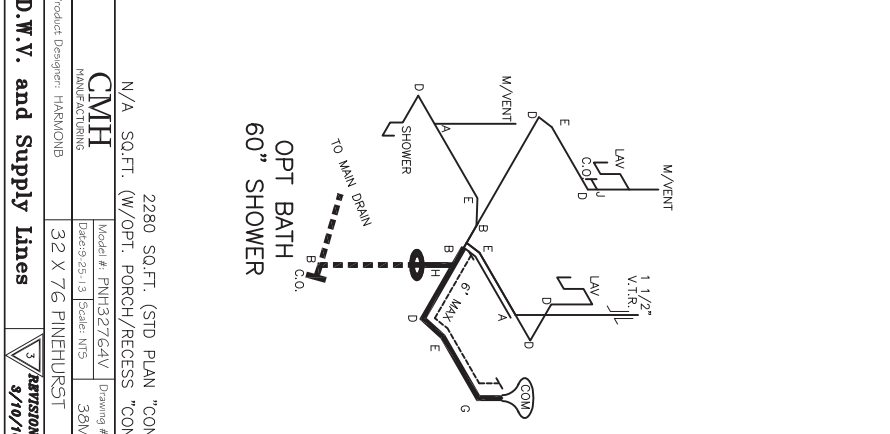
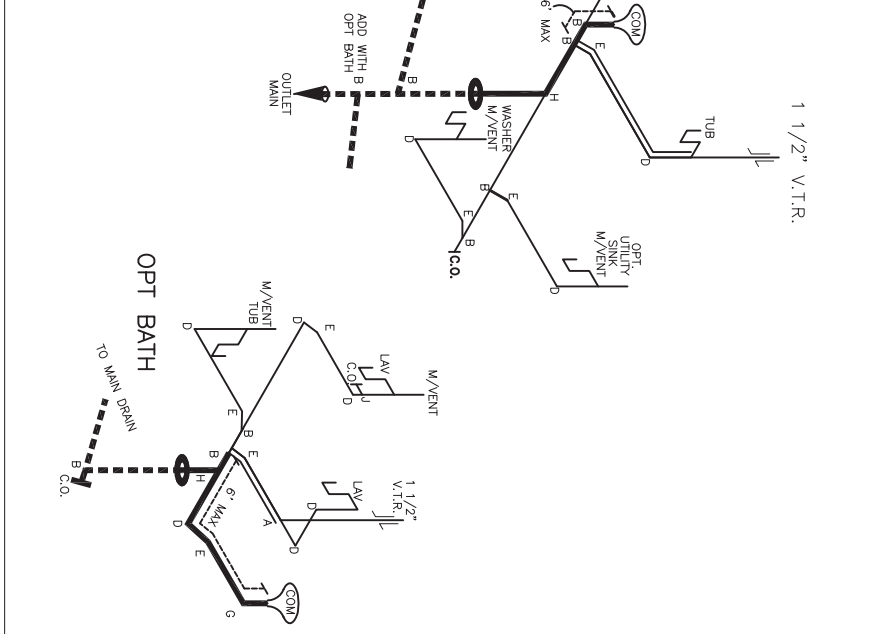
LEGEND

A	SHORT TURN T-Y
B	LONG TURN T-Y
C	1/4 BEND
D	LONG SWEEP 1/4 BEND
E	45° ELL
F	DR. SANITARY TEE
G	4x4 CLOSET ELL
H	2x2 1/2" ELL
I	45° Y
J	45° Y
K	LONG TURN STREET ELBOW
L	45° FTG. ELL

DWV LINE SIZE CHART

—	= 3"
—	= 2"
—	= 1 1/2"

FP-32-1649

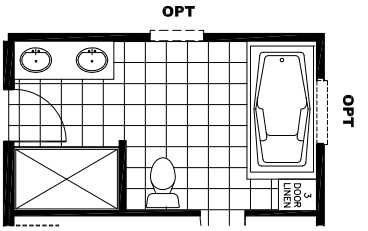


2280 SQ.FT. (STD PLAN "CONDITIONED")
N/A SQ.FT. (W/OPT. PORCH/RECESS "CONDITIONED")

Product Designer: HARKOMB	Model #: FIN132764V	Drawing #:
Manufacturer: CMH	Drawn: 25-13	Scale: NTS
32 X 76 PINEHURST	30M1 27	

D.W.V. and Supply Lines

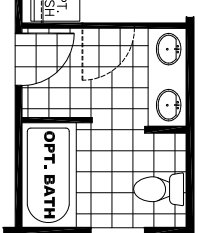
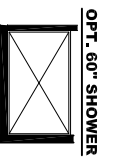
3/10/16
EGR-301218
JDC



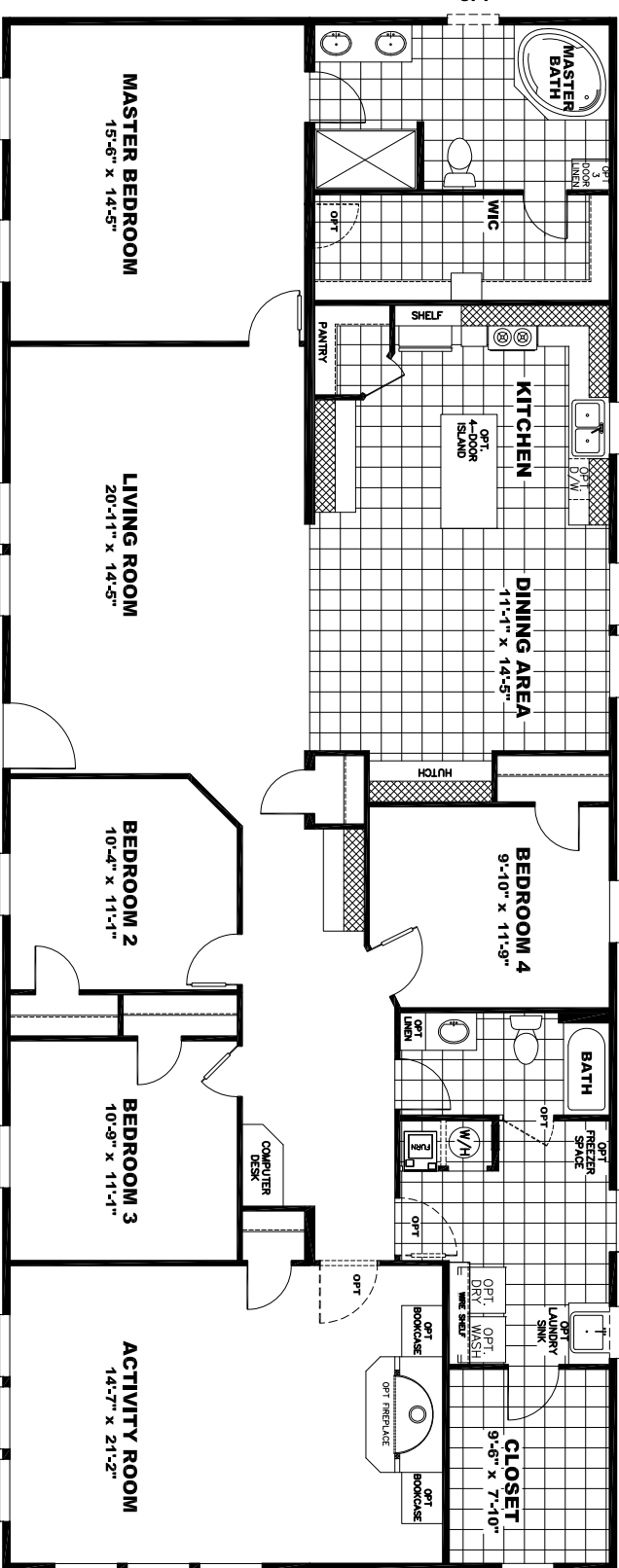
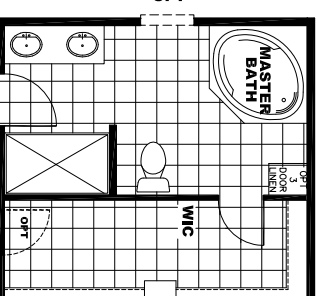
OPT TRANSOM
OVER HALL BATH



OPT 60" TUB



OPT WINDOW OVER
MASTER BATH TUB



OPT SGD



THE BIG TICKET

2280 SQ.FT.

Model #: CL32764V

CELEBRATION

Drawing #:

38M127