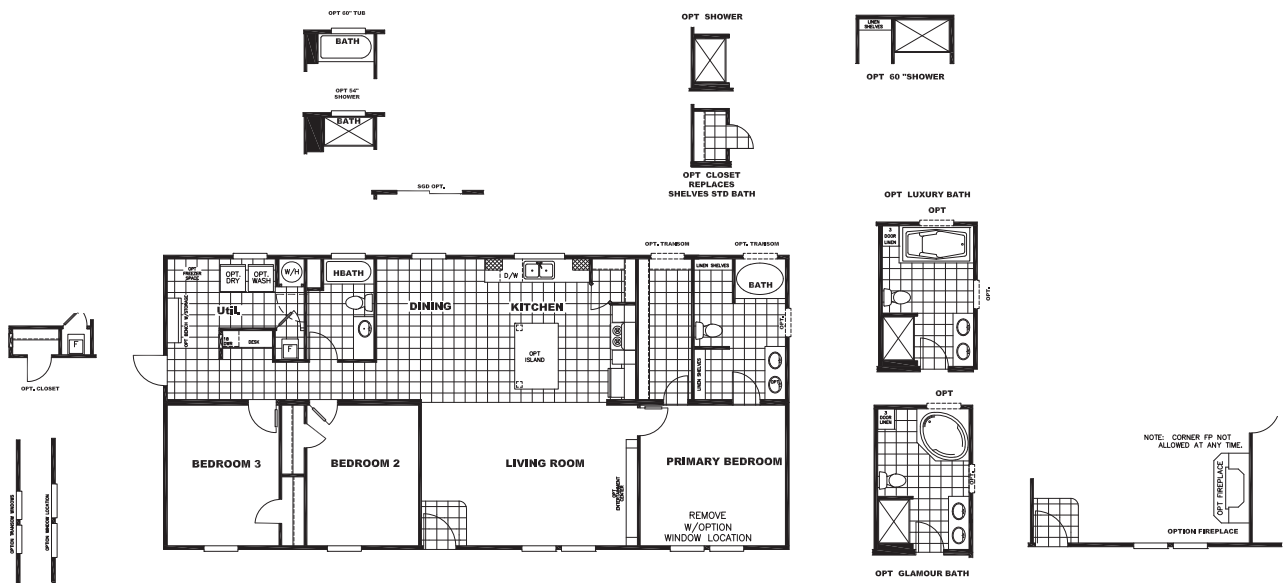


Sulphur Springs

Pt 78

28x56 | 1475 Sq Ft | 3 Beds | 2 Baths | SLT28563D



Standard Features

- 8' Flat Ceilings
- Six Panel Steel Front Door
- White Smart Panel Fascia
- Porch Lights
- ecobee Smart Thermostat
- 16" O.C. Floor Joists
- Six Panel Arched Interior Doors
- Exterior Electric Receptacle - Front
- 42" DuraCraft Cabinets in Kitchen
- 40 Gallon Water Heater
- Carrier SmartComfort Furnace
- Feature Wall in Master Bed
- 12x36 Transom in Guest Bath & Utility
- Emberwood Barn Door in Pantry
- Freezer Receptacle
- Platinum Island
- Desk in Hallway
- Wainscot in Dining Room
- Flat 1.5" Window Trim T/O
- Water Shutoffs Throughout
- Recessed LED Lighting
- 2" Mini – Blinds
- Frigidaire Appliances
- Ceiling Fan in Living Room
- Low E Insulated Windows
- *Beau Flor* Vinyl Flooring
- Vinyl Entry
- Carpet by Shaw

Available Options

- OSB Wrap
- Overhead Duct Vents
- Smart Panel
- Dormer
- Columns
- Cottage Rear Door
- Wind Zone 2 / 3 Construction
- Recessed Frame & Outriggers
- Extra Exterior Electric Receptacle – (Rear)
- Exterior Faucet (Front /Back)
- Glamour Bath
- Luxury Bath
- Shower Only Option
- Fiberglass Tubs / Showers
- Square China Lavs T/O
- Gas Furnace (No Overhead Vents w/ Gas Furnace)
- Gas Water Heater (50 Gallon)
- Black Gas Range
- Lino Throughout
- Fireplace
- Entertainment Center
- Ceiling Fans in Bedrooms
- SxS Refrigerator
- Smooth Top Range
- Microwave
- Dream Kitchen
- Stainless Steel Appliances
- Farmhouse Sink (White /Black)
- Stainless Steel Farmhouse Sink
- Sliding Glass Door
- Additional Windows (Where Applicable)
- Pendant / Cage Lights over Island
- Interior Door to Utility
- Washer / Dryer
- Upgraded Insulation

Customer Name: _____

Customer Signature: _____

Phone Number: _____

County: _____

CSM: _____

****All Options Subject to Change Without Notice****

