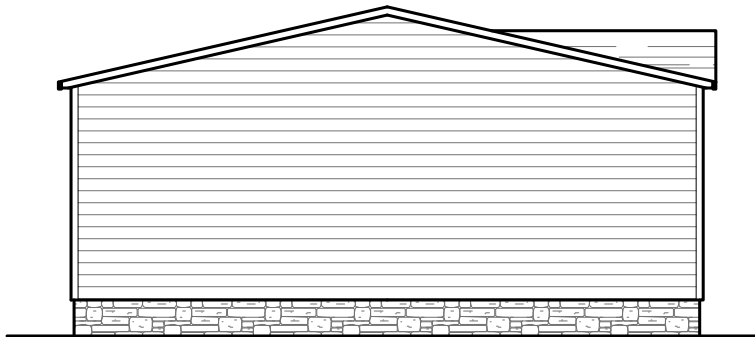


REAR ELEVATION



LEFT SIDE ELEVATION



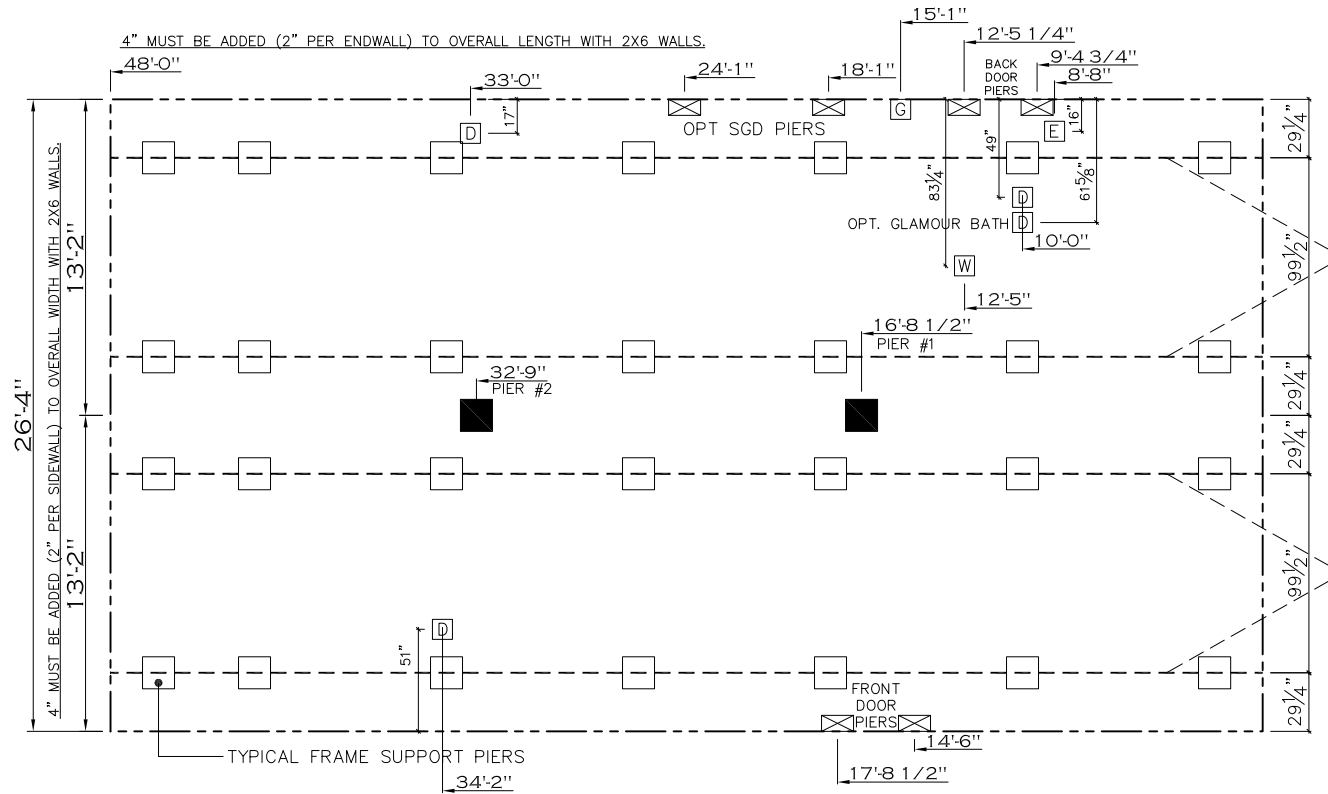
RIGHT SIDE ELEVATION



FRONT ELEVATION

1,264 SQ.FT. (STD PLAN "CONDITIONED")
 N/A SQ.FT. (OPT. PLAN "CONDITIONED")

CMH MANUFACTURING	Model #: SLT2B483A	Drawing #:
	Date: 7/22/16	Scale: NTS 38M149
Product Designer: JDC	28' x 48' Solution	
ELEVATION		



20 lb ROOF LOAD SIDEWALL OPENING PIER LOAD 28' BOX WIDTH	SIDEWALL OPENING (FT)					
	REQUIRED PIER LOAD (LBS)					
	3	4	5	6	8	10
	1175	1330	1485	1640	1950	2260

*FOR 30 lb & 40 lb ROOF LOAD REFER TO TABLES 7b & 7c IN THE INSTALLATION MANUAL.

20 psf Roof Live Load		
Column Pier #	Distance from Hitch	Pier Load (lbs)
1	16.71	3568
2	32.75	3568

30 psf Roof Live Load		
Column Pier #	Distance from Hitch	Pier Load (lbs)
1	16.71	5677
2	32.75	5677

40 psf Roof Live Load		
Column Pier #	Distance from Hitch	Pier Load (lbs)
1	16.71	6997
2	32.75	6997

SERVICE DROP LEGEND	
[E]	= ELECTRICAL DROP
[W]	= WATER INLET
[D]	= DWV PLUMBING DROP
[G]	= GAS INLET

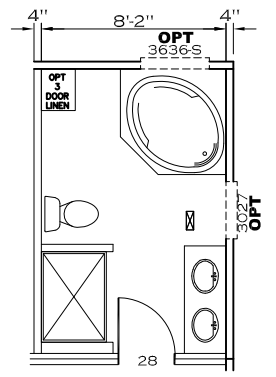
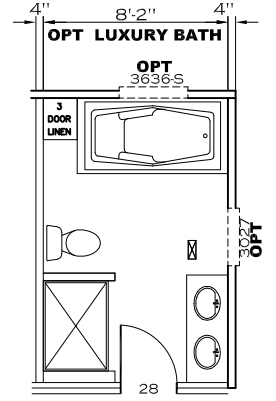
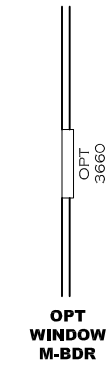
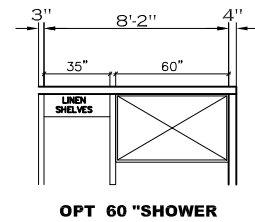
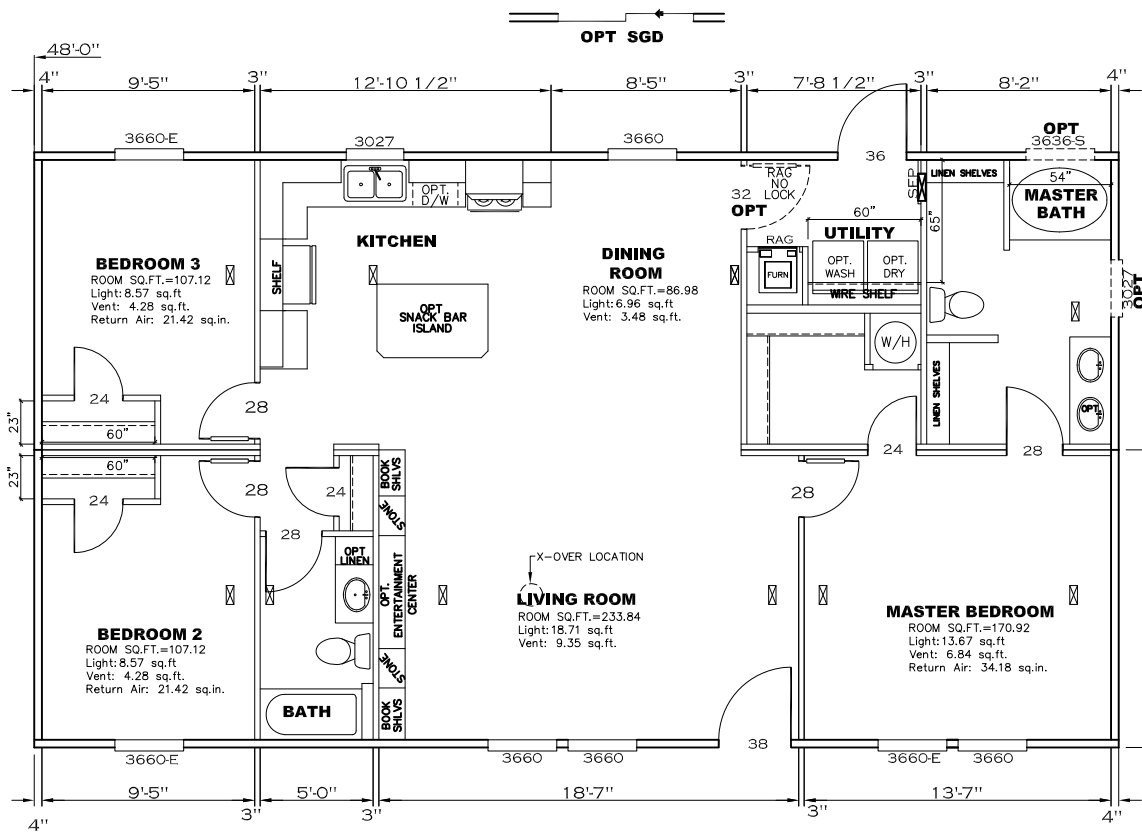
PIER LEGEND	
[□]	= SUPPORT UNDER MATING OPENING
[■]	= SUPPORT AT MATING COLUMN
[▨]	= SUPPORT UNDER MATING WALL
[■]	= PIER PORCH/RECESSED ENTRY
[□]	= PIER MAIN BEAM
[⊞]	= PIER PERIMETER
[●]	= TIE-DOWN SUPPORT (QTY PER TBL M, SEE DETAIL D-6 IN FOUND. PKG.)

GENERAL NOTES:

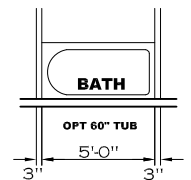
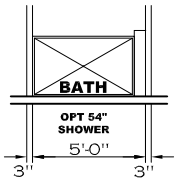
- PIER LOADS SHOWN ARE TO BE USED TO SIZE THE FOOTINGS BELOW THE MARRIAGEWALL FOR COLUMN SUPPORT PIERS. REFER TO TABLES 6b AND 6c IN THE INSTALLATION MANUAL FOR LOAD ON FRAME PIER FOOTINGS FOR HOMES THAT DO NOT REQUIRE PERIMETER BLOCKING. REFER TO TABLES 7b AND 7c IN THE INSTALLATION MANUAL FOR LOAD ON FRAME PIER FOOTINGS THAT REQUIRE PERIMETER BLOCKING. REFER TO TABLES 10 AND 10g TO DETERMINE FOOTING SIZE FOR ALL PIERS.
- REFER TO TABLE 9 FOR PIER CONFIGURATION AND MAXIMUM ALLOWABLE HEIGHTS. CROSS REFERENCE THE PIER HEIGHT WITH THE MAXIMUM ALLOWABLE FLOOR HEIGHT LISTED IN THE FRAME TIEDOWN CHARTS (TABLE 18, 19, AND 20).
- FLOOR WIDTH SHOWN IS FOR STANDARD PRODUCT ONLY. CONTACT THE MFG PLANT FOR SPECIFICATIONS OF OPTIONS ORDERED.
- SERVICE DROP LOCATIONS IDENTIFIED ARE APPROXIMATE.
- THE MAXIMUM SPACING FOR FRAME SUPPORT PIERS FOR 8" I-BEAMS IS 8 FEET, 10" & 12" I-BEAMS ARE 10 FEET.

1,264 SQ.FT. (STD PLAN "CONDITIONED")
N/A SQ.FT. (OPT. PLAN "CONDITIONED")

CMH MANUFACTURING	Model #: SLT28483A	Drawing #:
	Date: 7/22/16	Scale: NTS 38M 1.49
Product Designer: JDC	28' x 48' Solution	
PIER LOADS		



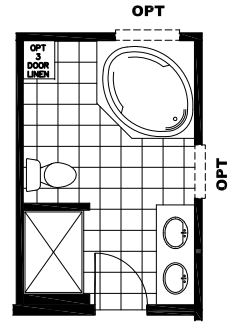
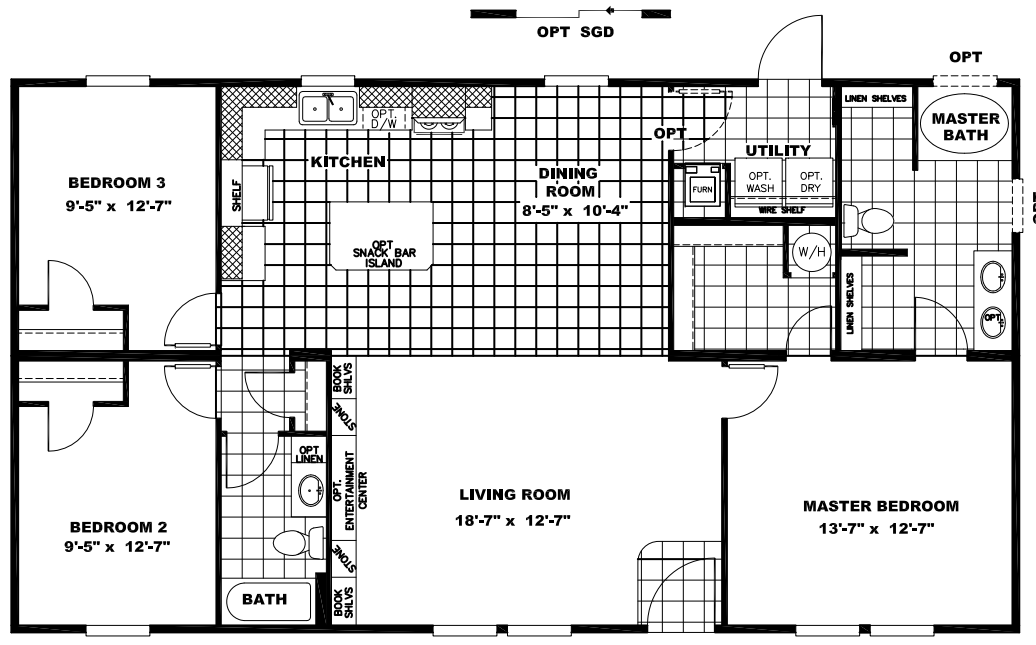
3612-T 60" A.F.F.
OPT TRANSOM OVER HALL BATH TUB



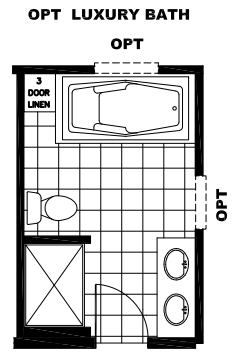
APPROVED **IWGC** **APPROVED**
AUG-2 2016
FP-28-4788
Federal Manufactured Home Construction And Safety Standards

1,264 SQ.FT. (STD PLAN "CONDITIONED")
N/A SQ.FT. (OPT. PLAN "CONDITIONED")

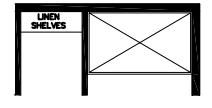
CMH MANUFACTURING	Model #: SLT28483A	Drawing #:
	Date: 7/22/16	Scale: NTS
Product Designer: JDC	28' x 48' Solution	
FLOOR PLAN		



OPT GLAMOUR BATH



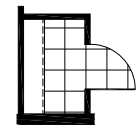
OPT LUXURY BATH



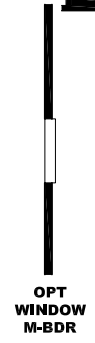
OPT 60" SHOWER



OPT SHOWER



OPT CLOSET REPLACES SHELVES STD BATH



OPT WINDOW M-BDR



OPT TRANSOM OVER HALL BATH TUB

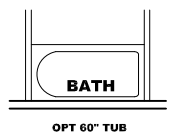
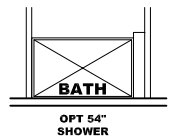
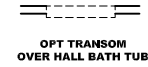
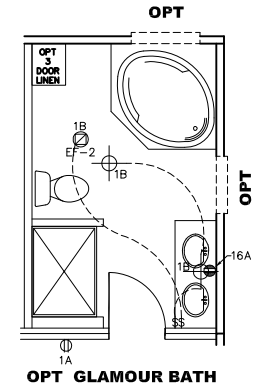
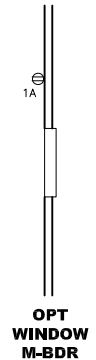
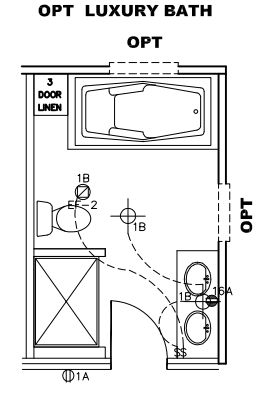
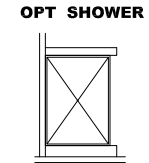
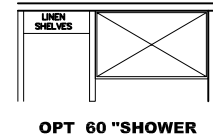
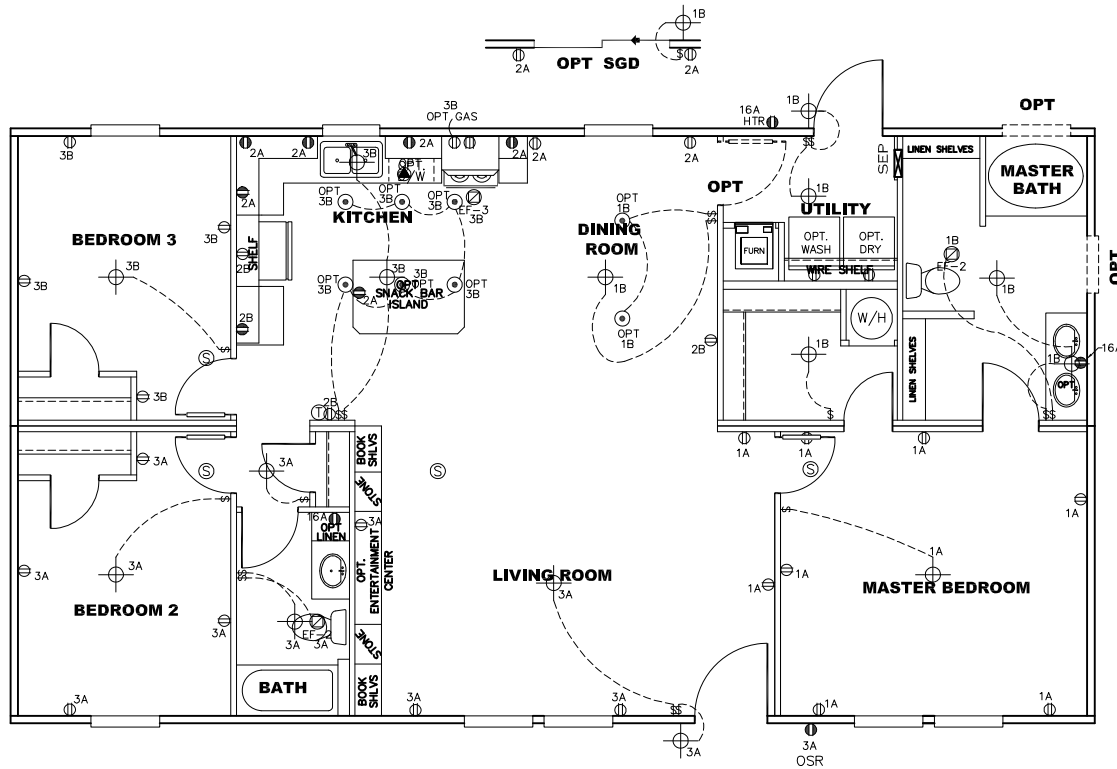


OPT 54" SHOWER



OPT 60" TUB

1,264 SQ.FT.
 Model #: SLT28483A
 Solution
 Drawing #:
 38M149



NOTES:

- 1) ALL CIRCUITS SHOWN ARE FOR REFERENCE AND MAY BE CHANGED BASED ON OPTIONAL COMPONENTS INSTALLED IN THE HOME.
- 2) REFER TO EL SECTION OF THE DAPIA FOR SYMBOL CHART.
- 3) INDICATES EITHER LIGHT OR RECEPTACLE MUST CONNECT TO SWITCH.
- 4) EF-1= 50 CFM EXHAUST FAN REQUIRED FOR THERMAL ZONE III THERMAL ZONES I & II MAY USE FAN OR WINDOW W/1.5 SQ. FT. OPENABLE GLASS.
- 5) EF-2= 50 CFM EXHAUST FAN REQUIRED THERMAL ZONE I, II, AND III.
- 6) EF-3= 100 CFM RANGE EXHAUST FAN, SWITCH AT HOOD.
- 7) EF-4= WHOLE HOUSE VENTILATION PER REQUIREMENTS IN S-HV-10 & 10A OR M-HV-11 & 11A OF DAPIA.
- 8) REFER TO EL SECTION OF THE DAPIA OR THE MFG. INSTALLATION INSTRUCTIONS FOR PROPER WIRE SIZE AND BREAKER SIZE FOR SPECIFIC APPLIANCE AND MODEL BEING INSTALLED.
- 9) ALL SMOKE ALARMS TO BE LOCATED ON THE CEILING.
- 10) DIMENSIONS SHOWN ON PRINT ARE APPROXIMATE AND TO BE USED ONLY AS A GUIDELINE.

APPROVED IWC A APPROVED
 AUG-2 2016
 FP-28-4788
 Federal Manufactured Home Construction And Safety Standards

1,264 SQ.FT. (STD PLAN "CONDITIONED")
 N/A SQ.FT. (OPT. PLAN "CONDITIONED")

CIRCUIT	CIRCUIT #	WIRE	BREAKER	CIRCUIT	CIRCUIT #	WIRE	BREAKER	CIRCUIT	CIRCUIT #	WIRE	BREAKER
LIGHT/RECEP	1A, B, 3A, B	14-2	15-SP	WATER HEATER	4A, 6B	SEE NOTE #8		BATHROOM	16A	12-2	20-SP
KITCHEN/DINING	2A, 2B	12-2	20-SP	RANGE	5B, 7A	SEE NOTE #8		OPT G/DISP	9B	SEE NOTE #8	
WASHER	15B	12-2	20-SP	FURNACE	6A, 8A, B, 10A, B	SEE NOTE #8		OPT SPA/ WP/JAC	11A, B	SEE NOTE #8	
DRYER	5A, 7B	SEE NOTE #8		OPT D/WASH	9A	SEE NOTE #8		FREEZER	13A	SEE NOTE #8	
				SMOKE ALARM	4B	SEE NOTE #8					

CMH MANUFACTURING	Model #: SLT28483A Date: 7/22/16	Drawing #: 38M149
Product Designer: JDC	28' x 48' Solution	
ELECTRICAL PLAN-06		

NOTE:
 DASHED LINES INDICATES HOT WATER
 SOLID LINES INDICATES COLD WATER

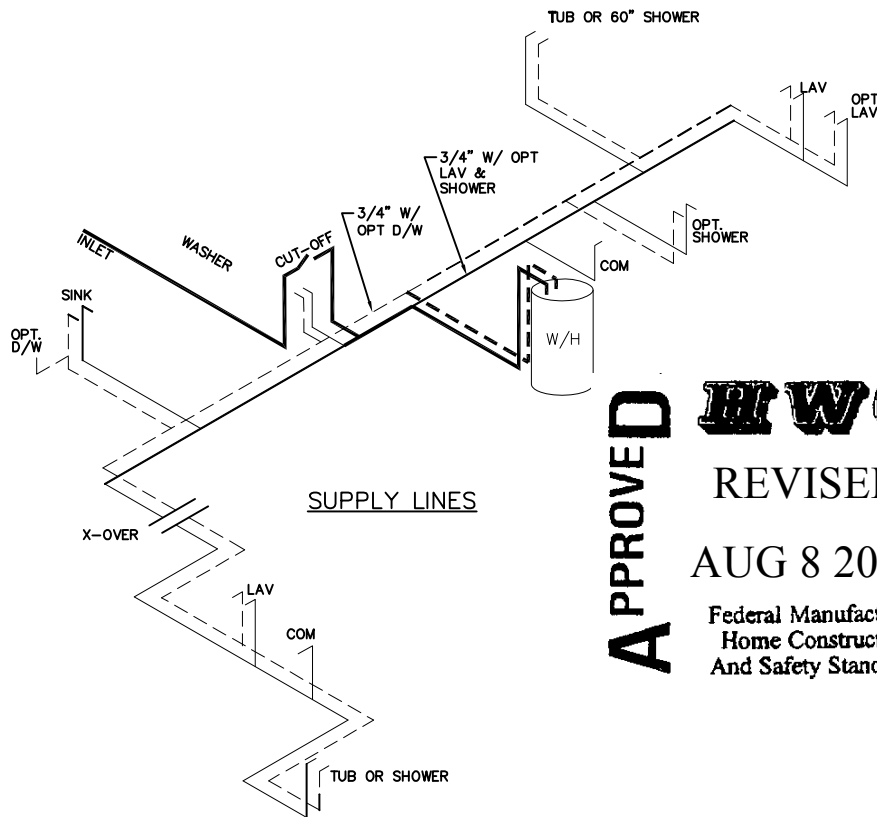
— = 3/4"
 — = 1/2"

DWV LINE SIZE CHART

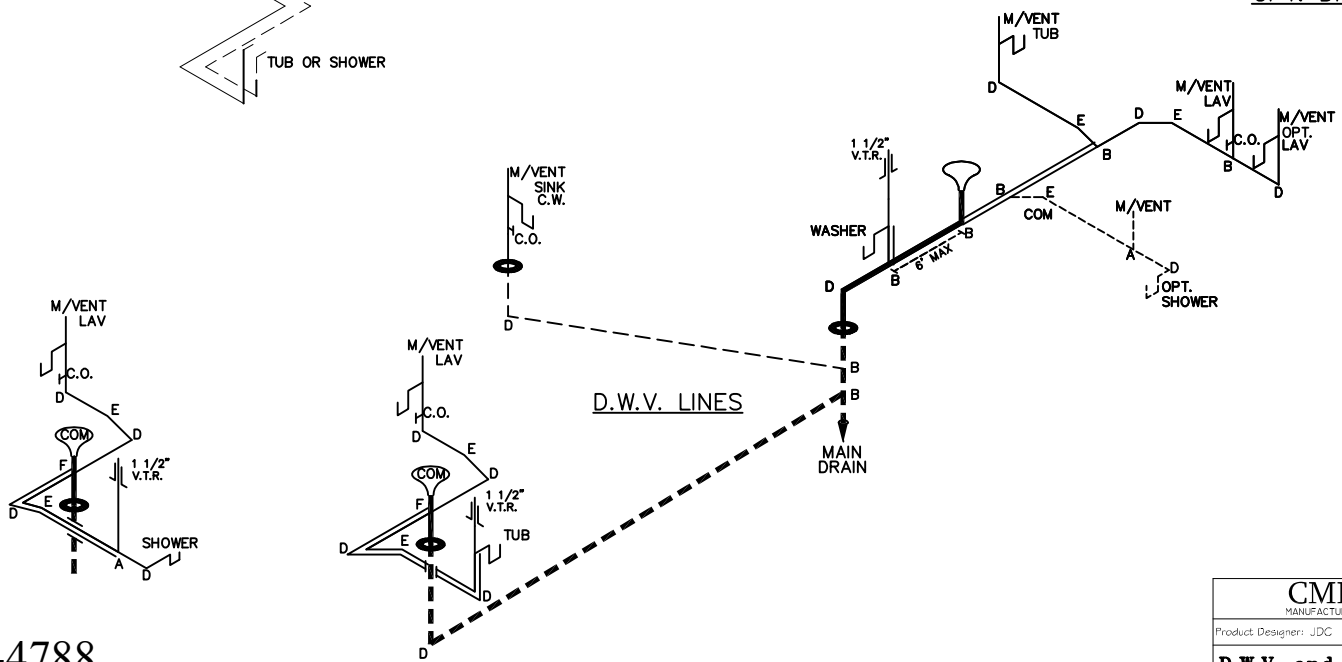
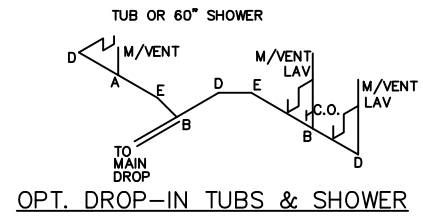
— = 3"
 — = 2"
 — = 1 1/2"

LEGEND

A	SHORT TURN T-Y
B	LONG TURN T-Y
C	1/4 BEND
D	LONG SWEEP 1/4 BEND
E	45 ELL
F	DBL. SANITARY TEE
G	4x3 CLOSET ELL
H	DOUBLE ELL
I	22 1/2° ELL
J	45° Y
K	LONG TURN STREET ELBOW
L	45 FTG ELL



APPROVED **HWC** **APPROVED**
 REVISED
 AUG 8 2016
 Federal Manufactured
 Home Construction
 And Safety Standards



1,264 SQ.FT. (STD PLAN "CONDITIONED")
 N/A SQ.FT. (OPT. PLAN "CONDITIONED")

CMH MANUFACTURING	Model #: SLT28483A	Drawing #:
	Date: 7/22/16	Scale: NTS
Product Designer: JDC	28' x 48' Solution	
D.W.V. and Supply Lines		

FP-28-4788