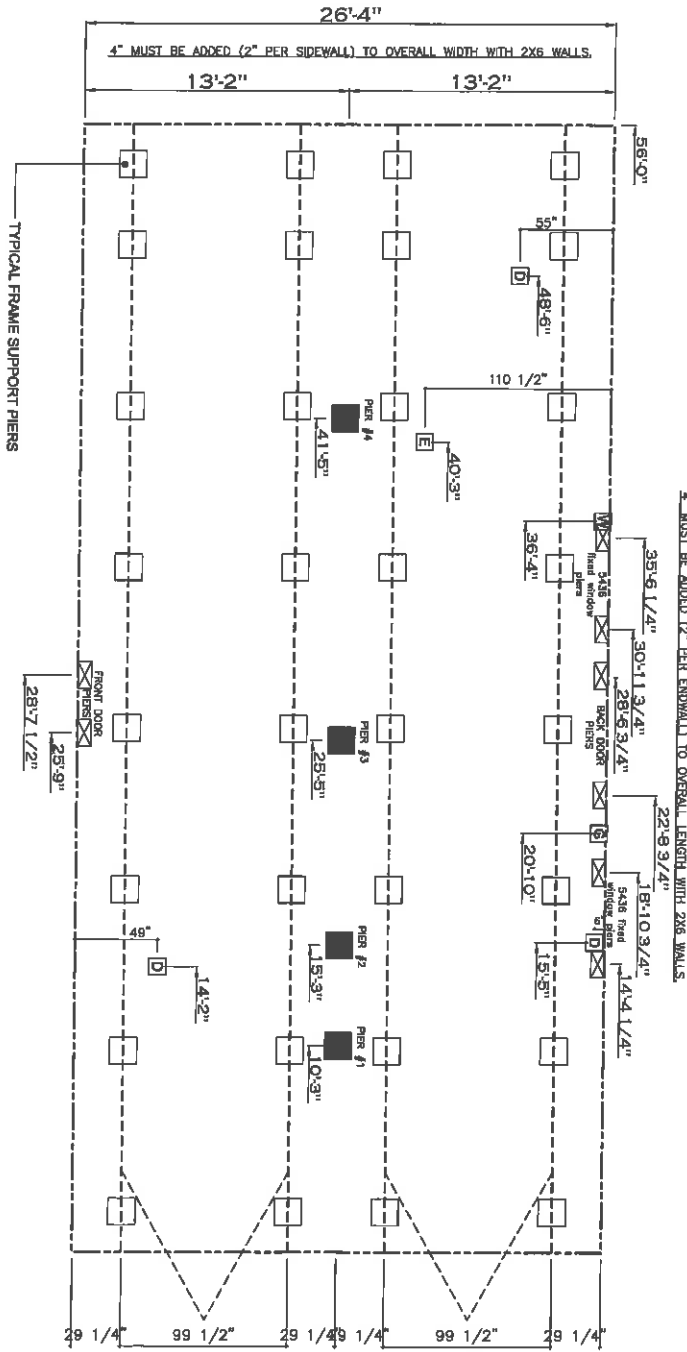


20 lb ROOF LOAD		SIDEWALL OPENING (FT)	
SIDEWALL OPENING PER LOAD		REQUIRED PER LOAD (LBS)	
28" BOX WIDTH			
3	4	5	6
1175	1330	1485	1640
		1950	2260

*FOR 30 lb & 40 lb ROOF LOAD REFER TO TABLES 7b & 7c IN THE INSTALLATION MANUAL.

PIER LEGEND	
□	= SUPPORT UNDER MAIN OPENING
■	= SUPPORT AT MAIN COLUMN
▣	= SUPPORT UNDER MAINING HULL
■	= PER FORK/ACCESSORY DRIVE
□	= PER MAIN BEAM
■	= PER PENETRATOR
●	= TIE-DOWN SUPPORT (GY/VERTIL N, SEE DETAIL DRAWING FOR DIM.)

SERVICE DROP LEGEND	
ⓔ	= ELECTRICAL DROP
Ⓜ	= WATER INLET
Ⓛ	= DWV PLUMBING DROP
ⓐ	= GAS INLET



- GENERAL NOTES:**
- PIER LOADS SHOWN ARE TO BE USED TO SIZE THE FOOTINGS BELOW THE MARRIAGEWALL FOR COLUMN SUPPORT PIERS. REFER TO TABLES 6b AND 6c IN THE INSTALLATION MANUAL FOR LOAD ON FRAME PIER FOOTINGS FOR HOMES THAT DO NOT REQUIRE PERIMETER BLOCKING. REFER TO TABLES 7a AND 7c IN THE INSTALLATION MANUAL FOR LOAD ON FRAME PIER FOOTINGS THAT REQUIRE PERIMETER BLOCKING. REFER TO TABLES 10 AND 10a TO DETERMINE FOOTING SIZE FOR ALL PIERS.
 - REFER TO TABLE 9 FOR PIER CONFIGURATION AND MAXIMUM ALLOWABLE HEIGHTS. CROSS REFERENCE THE PIER HEIGHT WITH THE MAXIMUM ALLOWABLE FLOOR HEIGHT LISTED IN THE FRAME TIE-DOWN CHARTS (TABLE 18, 19, AND 20).
 - FLOOR WIDTH SHOWN IS FOR STANDARD PRODUCT ONLY. CONTACT THE MFG PLANT FOR SPECIFICATIONS OF OPTIONS ORDERED.
 - SERVICE DROP LOCATIONS IDENTIFIED ARE APPROXIMATE.
 - THE MAXIMUM SPACING FOR FRAME SUPPORT PIERS FOR 8" BEAMS IS 8 FEET, 10" & 12" I-BEAMS ARE 10 FEET.

20 psf Roof Live Load		
Column Pier #	Distance from Hitch	Pier Load (lbs)
1	10.25	1388
2	15.25	1388
3	25.42	3560
4	41.42	3560

30 psf Roof Live Load		
Column Pier #	Distance from Hitch	Pier Load (lbs)
1	10.25	2770
2	15.25	2770
3	25.42	5667
4	41.42	5667

40 psf Roof Live Load		
Column Pier #	Distance from Hitch	Pier Load (lbs)
1	10.25	3363
2	15.25	3363
3	25.42	6983
4	41.42	6983

1475 SQ.FT. (STD PLAN "CONDITIONED")
 N/A SQ.FT. (W/OPT. PORCH/RECESS "CONDITIONED")

Product Designer: JDC

CMH
 MANUFACTURING

Model #: ANN2553AC | Drawing #:
 Date/Revision | Scale: 1/8"=1'-0"

PIER LOADS