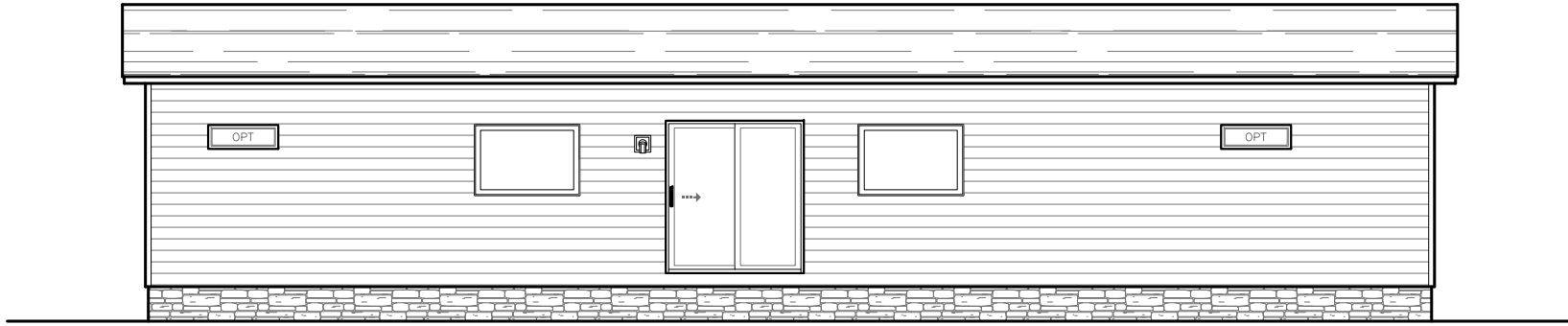
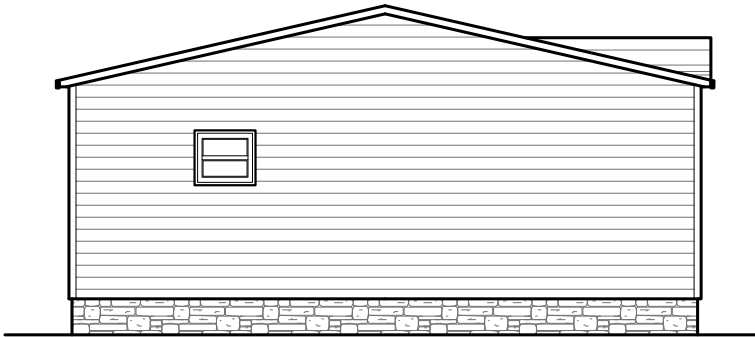


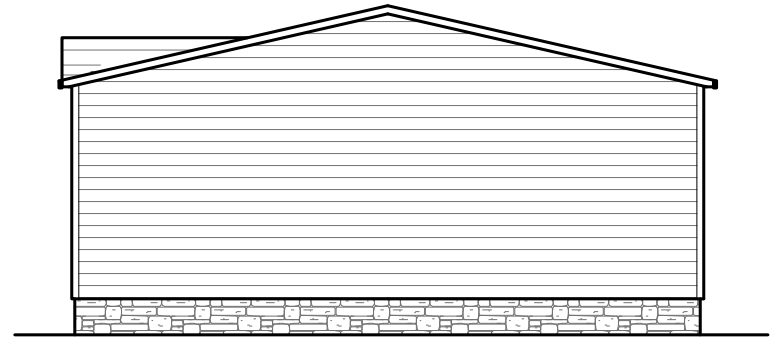
1475 SQ.FT.  
 Model #: ANN28563C  
**ANNIVERSARY**  
 Drawing #:  
 38MI50



REAR ELEVATION



LEFT SIDE ELEVATION



RIGHT SIDE ELEVATION



FRONT ELEVATION

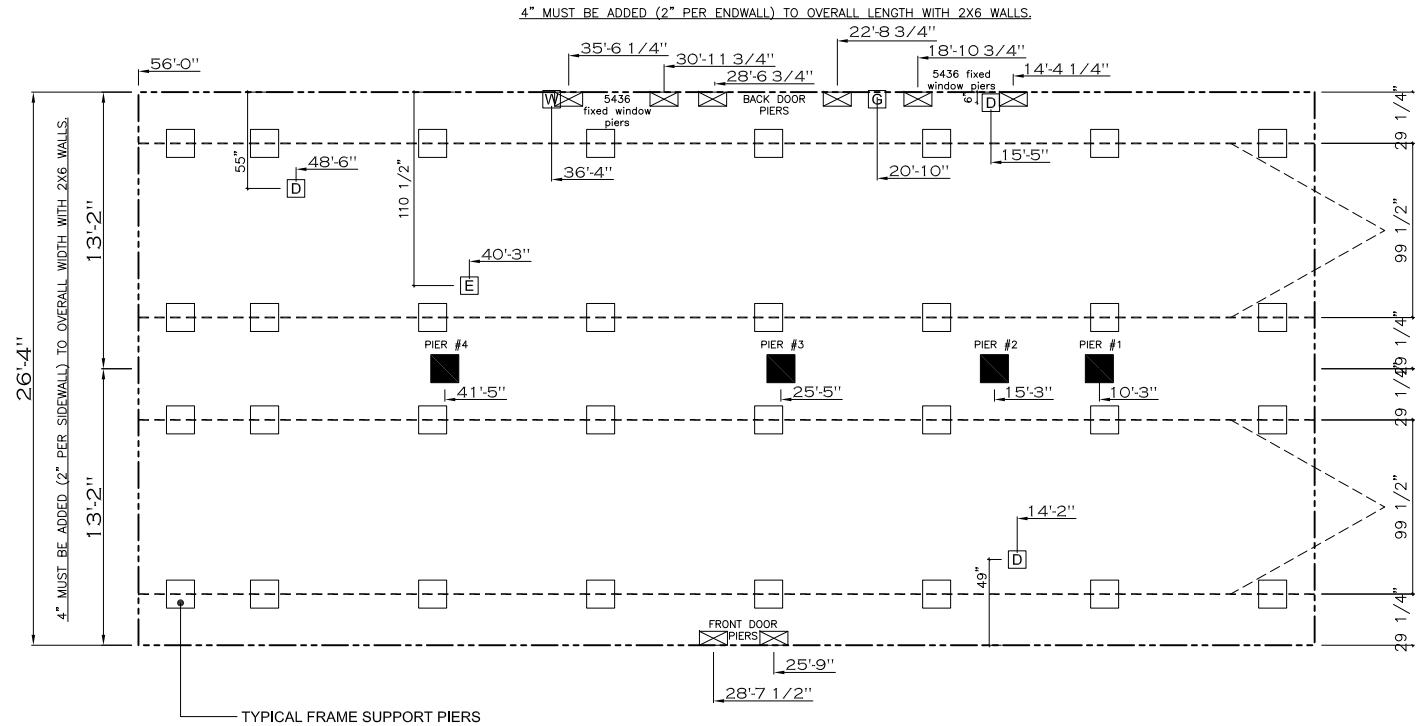
		<b>1475 SQ.FT. (STD PLAN "CONDITIONED")</b>	
		<b>N/A SQ.FT. (W/OPT. PORCH/RECESS "CONDITIONED")</b>	
<b>CMH</b> MANUFACTURING	Model #:	ANN285G3C	Drawing #:
	Date:	7/28/16	Scale: N/A 38M150
Product Designer: JDC		28' x 56' ANNIVERSARY	
ELEVATION			

20 lb ROOF LOAD SIDEWALL OPENING PIER LOAD 28' BOX WIDTH	SIDEWALL OPENING (FT)					
	REQUIRED PIER LOAD (LBS)					
	3	4	5	6	8	10
	1175	1330	1485	1640	1950	2260

\*FOR 30 lb & 40 lb ROOF LOAD REFER TO TABLES 7b & 7c IN THE INSTALLATION MANUAL.

PIER LEGEND	
	= SUPPORT UNDER MATING OPENING
	= SUPPORT AT MATING COLUMN
	= SUPPORT UNDER MATING WALL
	= PIER PORCH/RECESSED ENTRY
	= PIER MAIN BEAM
	= PIER PERIMETER
	= TIE-DOWN SUPPORT (QTY PER TBL M, SEE DETAIL D-6 IN FOUND. PKG.)

SERVICE DROP LEGEND	
	= ELECTRICAL DROP
	= WATER INLET
	= DWV PLUMBING DROP
	= GAS INLET



- GENERAL NOTES:
- PIER LOADS SHOWN ARE TO BE USED TO SIZE THE FOOTINGS BELOW THE MARRIAGEWALL FOR COLUMN SUPPORT PIERS. REFER TO TABLES 6b AND 6c IN THE INSTALLATION MANUAL FOR LOAD ON FRAME PIER FOOTINGS FOR HOMES THAT DO NOT REQUIRE PERIMETER BLOCKING. REFER TO TABLES 7b AND 7c IN THE INSTALLATION MANUAL FOR LOAD ON FRAME PIER FOOTINGS THAT REQUIRE PERIMETER BLOCKING. REFER TO TABLES 10 AND 10a TO DETERMINE FOOTING SIZE FOR ALL PIERS.
  - REFER TO TABLE 9 FOR PIER CONFIGURATION AND MAXIMUM ALLOWABLE HEIGHTS. CROSS REFERENCE THE PIER HEIGHT WITH THE MAXIMUM ALLOWABLE FLOOR HEIGHT LISTED IN THE FRAME TIEDOWN CHARTS (TABLE 18, 19, AND 20).
  - FLOOR WIDTH SHOWN IS FOR STANDARD PRODUCT ONLY. CONTACT THE MFG PLANT FOR SPECIFICATIONS OF OPTIONS ORDERED.
  - SERVICE DROP LOCATIONS IDENTIFIED ARE APPROXIMATE.
  - THE MAXIMUM SPACING FOR FRAME SUPPORT PIERS FOR 8" I-BEAMS IS 8 FEET, 10" & 12" I-BEAMS ARE 10 FEET.

20 psf Roof Live Load		
Column Pier #	Distance from Hitch	Pier Load (lbs)
1	10.25	1388
2	15.25	1388
3	25.42	3560
4	41.42	3560

30 psf Roof Live Load		
Column Pier #	Distance from Hitch	Pier Load (lbs)
1	10.25	2770
2	15.25	2770
3	25.42	5667
4	41.42	5667

40 psf Roof Live Load		
Column Pier #	Distance from Hitch	Pier Load (lbs)
1	10.25	3363
2	15.25	3363
3	25.42	6983
4	41.42	6983

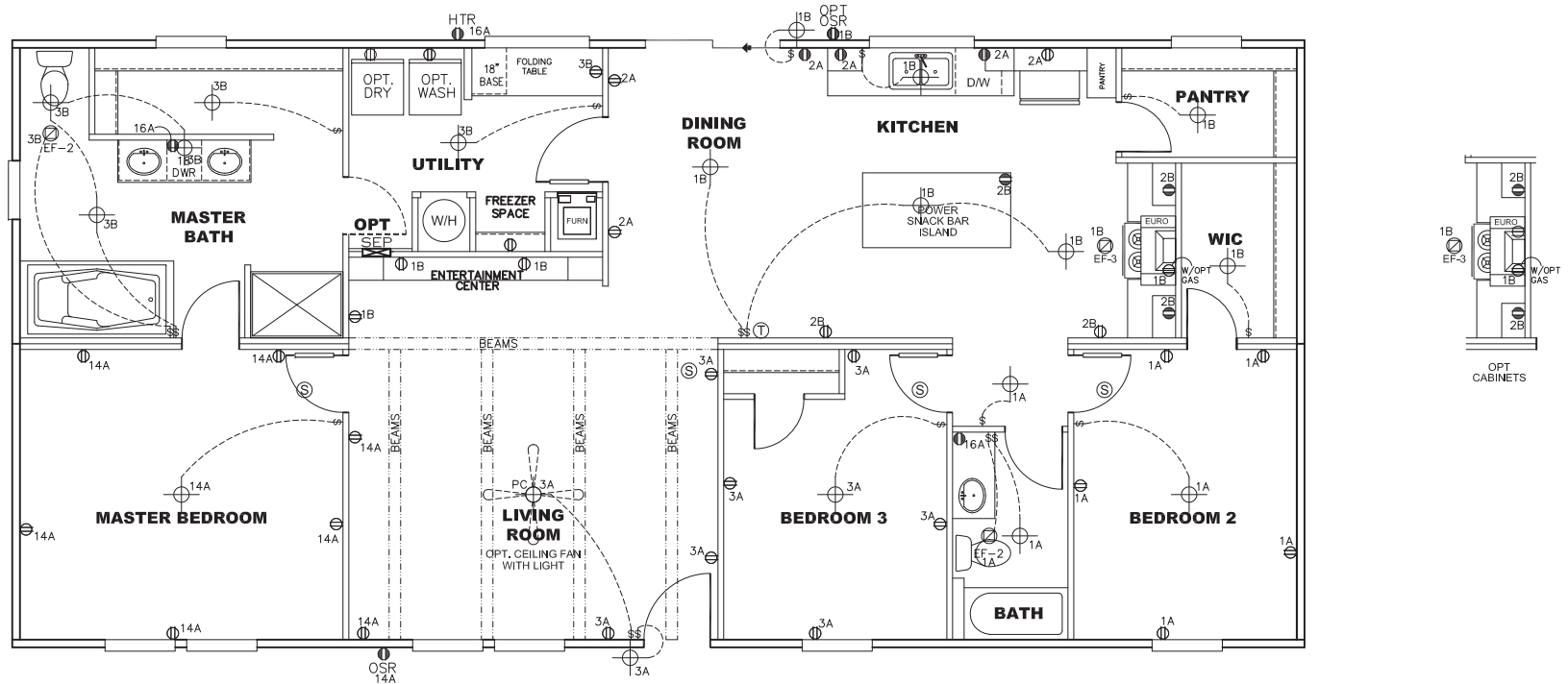
1475 SQ.FT. (STD PLAN "CONDITIONED")  
N/A SQ.FT. (W/OPT. PORCH/RECESS "CONDITIONED")

<b>CMH</b> MANUFACTURING	Model #: ANN20563C	Drawing #:
	Date: 7/20/16	Scale: N/A
Product Designer: JDC	28' x 56' ANNIVERSARY	

**PIER LOADS**

NOTES:

- ALL CIRCUITS SHOWN ARE FOR REFERENCE AND MAY BE CHANGED BASED ON OPTIONAL COMPONENTS INSTALLED IN THE HOME.
- REFER TO EL SECTION OF THE DAPIA FOR SYMBOL CHART.
- EITHER LIGHT OR RECEPTACLE MUST CONNECT TO SWITCH.
- EF-1= 50 CFM EXHAUST FAN REQUIRED FOR THERMAL ZONE III THERMAL ZONES I & II MAY USE FAN OR WINDOW W/1.5 SQ. FT. OPENABLE GLASS.
- EF-2= 50 CFM EXHAUST FAN REQUIRED THERMAL ZONE I, II, AND III.
- EF-3= 100 CFM RANGE EXHAUST FAN, SWITCH AT HOOD.
- EF-4= WHOLE HOUSE VENTILATION PER REQUIREMENTS IN S-HV-10 & 10A OR M-HV-11 & 11A OF DAPIA.
- REFER TO EL SECTION OF THE DAPIA OR THE MFG. INSTALLATION INSTRUCTIONS FOR PROPER WIRE SIZE AND BREAKER SIZE FOR SPECIFIC APPLIANCE AND MODEL BEING INSTALLED.
- ALL SMOKE ALARMS TO BE LOCATED ON THE CEILING.
- DIMENSIONS SHOWN ON PRINT ARE APPROXIMATE AND TO BE USED ONLY AS A GUIDELINE.



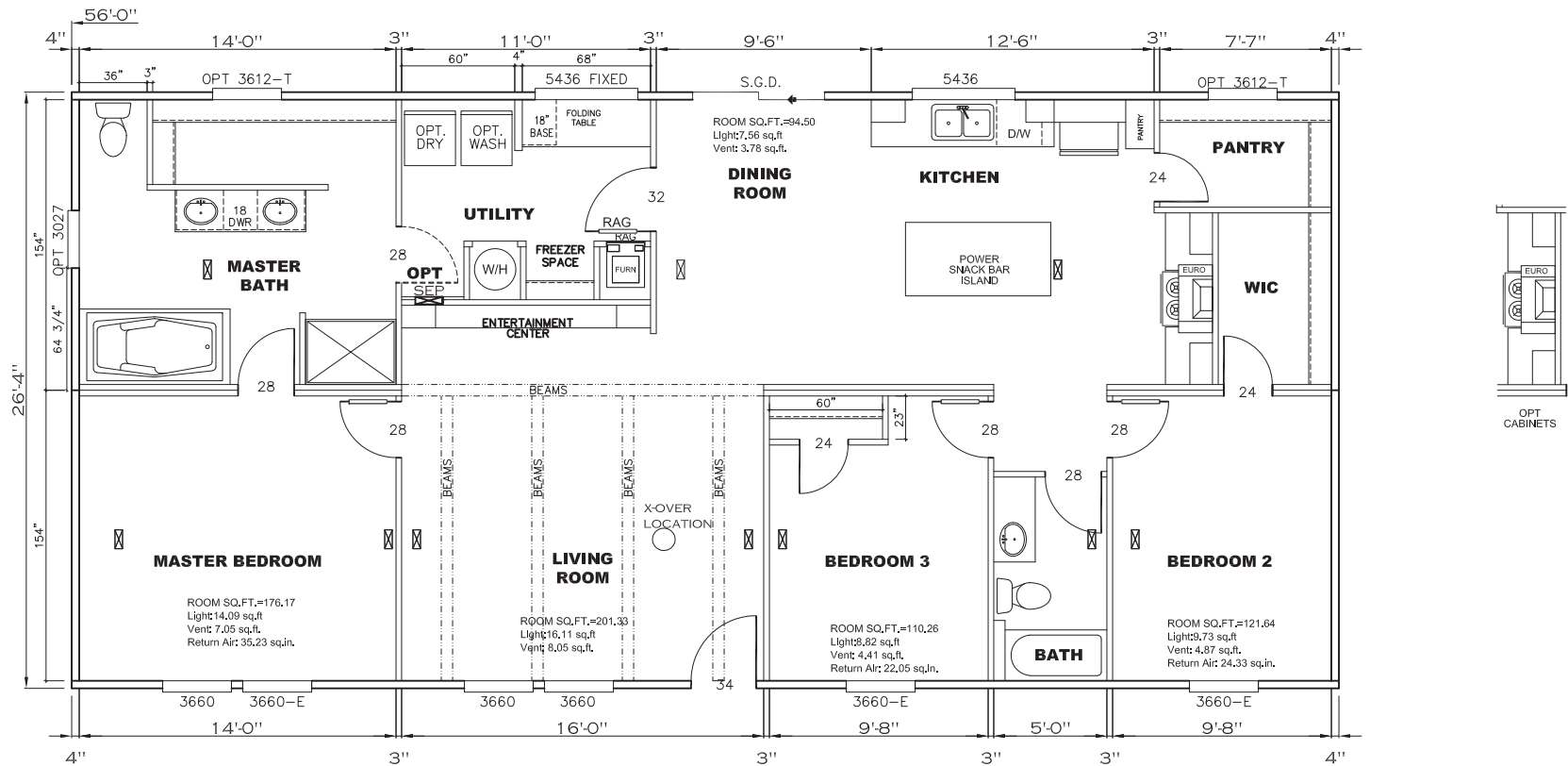
CIRCUIT	CIRCUIT #	WIRE	BREAKER	CIRCUIT	CIRCUIT #	WIRE	BREAKER	CIRCUIT	CIRCUIT #	WIRE	BREAKER
LIGHT/RECEP	1A,1B,3A,3B,14A	14-2	15-SP	WATER HEATER	4A,6B	SEE NOTE #8		BATH / HTR	1 6 A	12-2	20-SP
KITCHEN/DINING	2 A, 2B	12-2	20-SP	RANGE	5B,7A	SEE NOTE #8		OPT Q/DISP	9B	SEE NOTE #8	
WASHER	12A	12-2	20-SP	FURNACE	6A,8A,B,10A,B	SEE NOTE #8		OPT SPAT W/P/JAC	11A,B	SEE NOTE #8	
DRYER	5A,7B	SEE NOTE #8		OPT DWASH	9A	SEE NOTE #8		FREEZER	1 3 A	SEE NOTE #8	
				SMOKE ALARM	4B	SEE NOTE #8					

**APPROVED** **HWC** **APPROVED**  
 REVISED  
 21 DEC 2017  
 FP-28-4797  
 Federal Manufactured  
 Home Construction  
 And Safety Standards

1475 SQ.FT. (STD PLAN "CONDITIONED")  
 N/A SQ.FT. (W/OPT. PORCH/RECESS "CONDITIONED")

<b>CMH</b> MANUFACTURING	Model #: ANN28563C	Drawing #:
Date: 7/28/16	Scale: N/A	38M150
Product Designer: JDC		28' x 56' ANNIVERSARY

**ELECTRICAL PLAN-06**



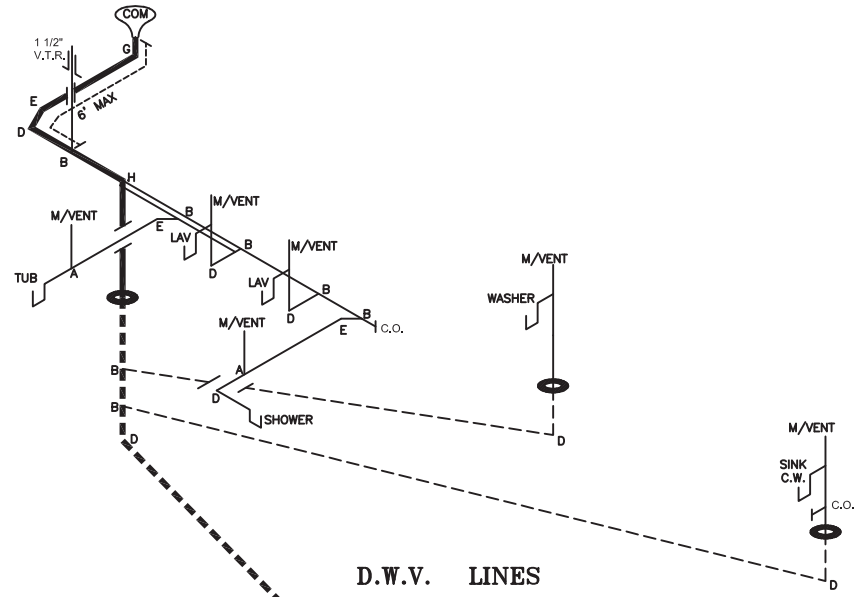
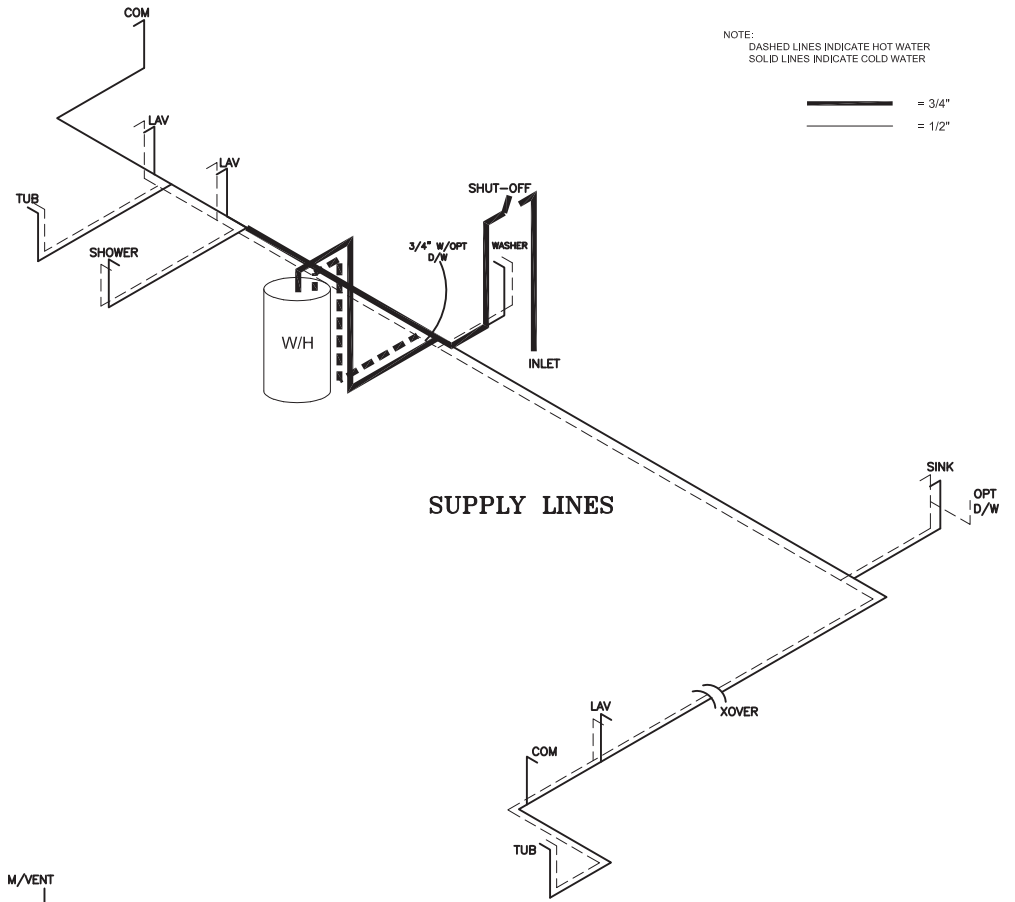
**APPROVED** **HWC** **APPROVED**  
**REVISED**  
 21 DEC 2017  
 FP-28-4797  
 Federal Manufactured  
 Home Construction  
 And Safety Standards

NOTE: \*-T = TRANSOM 60" ABOVE A.F.F.

1475 SQ.FT. (STD PLAN "CONDITIONED") N/A SQ.FT. (W/OPT. PORCH/RECESS "CONDITIONED")	
<b>CMH</b> MANUFACTURING	Model #: ANN28563C Date: 7/28/16 Scale: N/A
Product Designer: JDC	Drawing #: 38M150 28' x 56' ANNIVERSARY
<b>FLOOR PLAN</b>	

NOTE:  
DASHED LINES INDICATE HOT WATER  
SOLID LINES INDICATE COLD WATER

— = 3/4"  
— = 1/2"

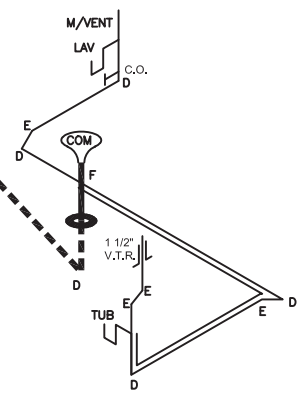


**DWV LINE SIZE CHART**

—	= 3"
—	= 2"
—	= 1 1/2"

**LEGEND**

A	SHORT TURN T-Y
B	LONG TURN T-Y
C	1/4 BEND
D	LONG SWEEP 1/4 BEND
E	45 ELL
F	DBL. SANITARY TEE
G	4x3 CLOSET ELL
H	DOUBLE ELL
I	22 1/2° ELL
J	45° Y
K	LONG TURN STREET ELBOW
L	45 FTG ELL



**APPROVED** **RWC** **APPROVED**  
**REVISED**  
 21 DEC 2017  
 FP-28-4797  
 Federal Manufactured  
 Home Construction  
 And Safety Standards

1475 SQ.FT. (STD PLAN "CONDITIONED")	
N/A SQ.FT. (W/OPT. PORCH/RECESS "CONDITIONED")	
<b>CMH</b> MANUFACTURING	Model #: ANN28563C Drawing #: Date: 7/28/16 Scale: N/A 38M150
Product Designer: JDC	28' x 56' ANNIVERSARY
<b>D.W.V. and Supply Lines</b>	2 REVISION ECR-509816 8/4/17 JDC