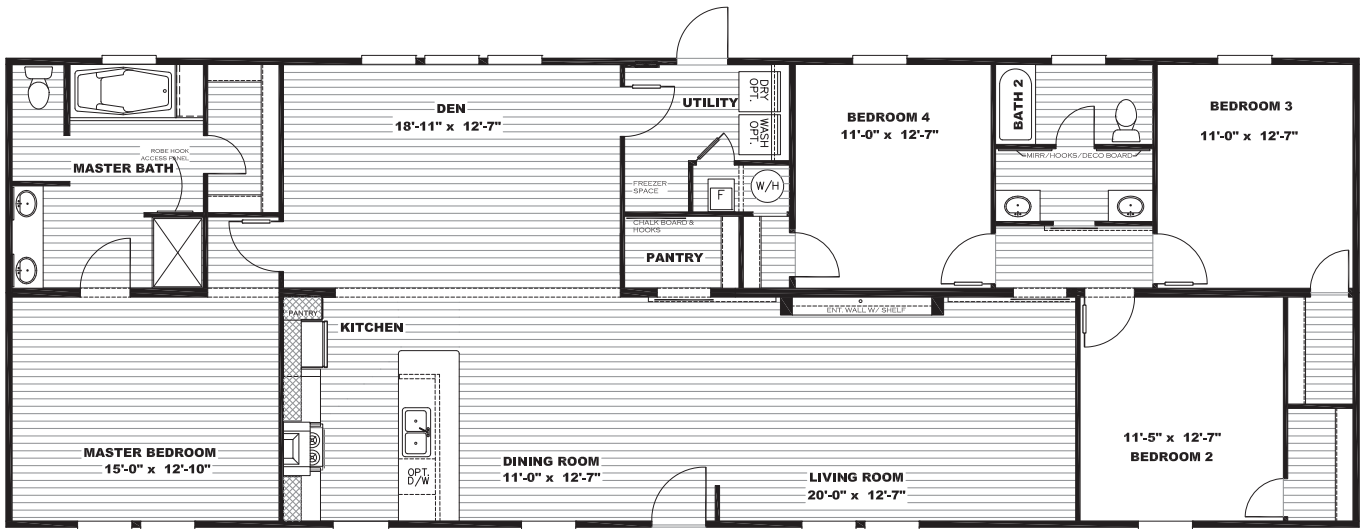


Sulphur Springs

Breeze 2.5

28x76 | 2001 Sq Ft | 4 Beds | 2 Baths | SSR28764B



Sulphur Springs

2600 MAIN STREET SULPHUR SPRINGS, TX 75482 | 903.439.0242 | CLAYTONSS.COM

Standard Features

- 8' Flat Ceilings
- 20' Dormer w/ 2 Columns
- White Window Lineals–Front of Home
- Six Panel Steel Front Door
- 9 – Light Cottage Rear Door
- Porch Lights
- *ecobee* Smart Thermostat
- 16" O.C. Floor Joists
- Six Panel Interior Doors
- Exterior Faucet & Electric Receptacle (Rear)
- 42" DuraCraft Cabinets in Kitchen
- Double Lavs in Both Bathrooms
- 72" Drop–In Platform Tub w/ 48" F/G Shower in Master Bathroom
- 40 Gallon Water Heater
- Carrier SmartComfort Furnace
- Water Shutoffs Throughout
- Recessed LED Lighting
- Entertainment Center
- Chalk Board w/ Hooks in Pantry
- Cabinet w/ Shelves in Pantry
- Two Sliding Barn Doors
- Stainless Steel Range Hood
- Frigidaire Appliances
- Breeze 2.5 Island
- Freezer Receptacle
- W/B All Bedrooms & Living Areas
- Low E Insulation Windows
- *Beau Flor* Vinyl Flooring
- 25 oz. Carpet by Shaw
- Energy Smart Insulation
- Black Dishwasher

Available Options

- OSB Wrap
- Overhead Duct Vents
- Smart Panel
- Wind Zone II / III Construction
- Recessed Outriggers
- Extra Electric Receptacle (Front)
- Extra Exterior Faucet
- 50 Gallon Electric Water Heater
- Gas Package (No Overhead Vents w/ Gas Furnace)
- Ceiling Fans
- Lino Throughout
- Icemaker
- 26 CF SxS Refrigerator
- Smooth Top Range
- Farmhouse Sink (White)
- Stainless Steel Farmhouse Sink
- Stainless Steel Appliances
- Washer / Dryer
- 2" Mini-blinds
- Breeze 2.5 Square China Lavs

Customer Name: _____

Customer Signature: _____

Phone Number: _____

County: _____

CSM: _____

****All Options Subject to Change Without Notice****

