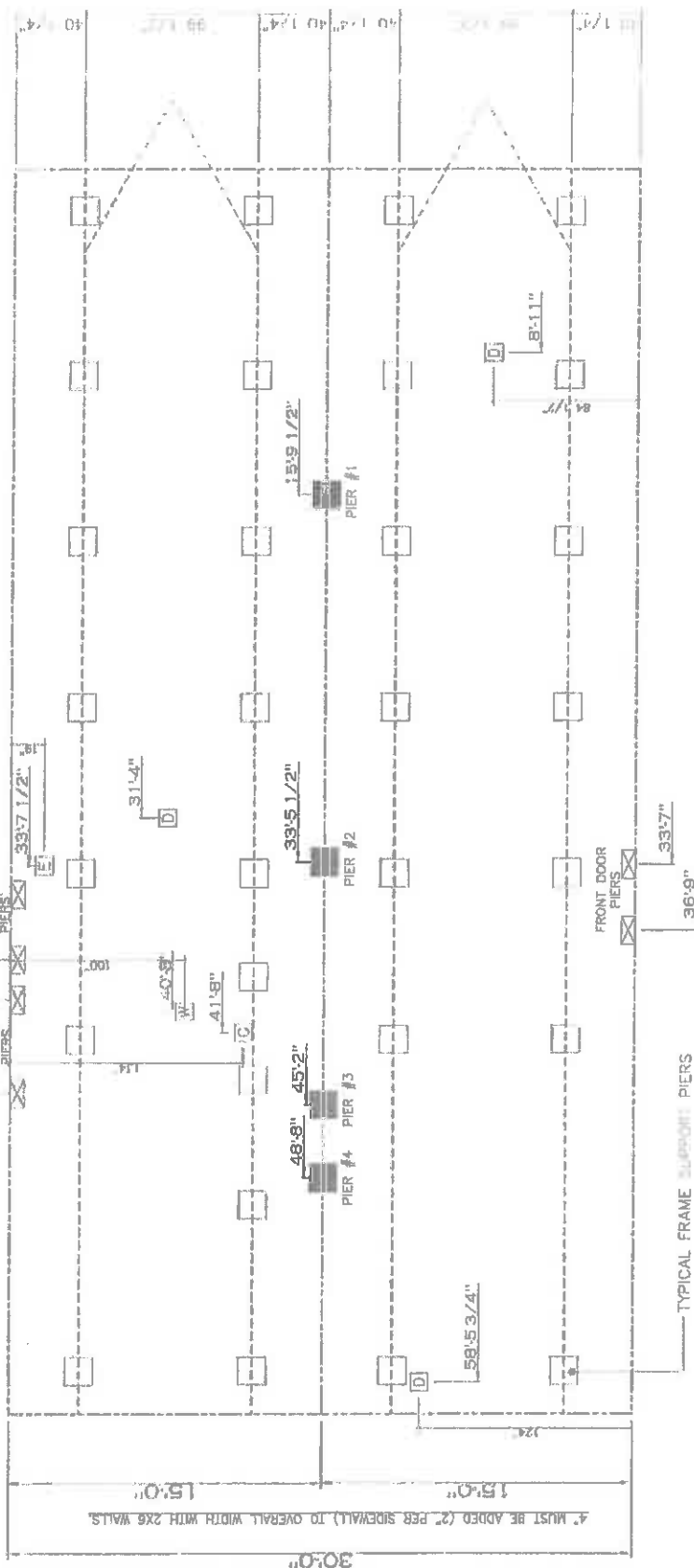


20 lb ROOF L' SIDEWALL OPENING PIER, LOAD 32' BOX WIDTH	SIDEWALL OPENING (FT)			
	3	4	5	6
1244	1413	1581	1750	2088
				2425

*FOR 30" & 40" lb ROOF LOAD REFER TO TABLES 7b & 7c IN THE INSTALLATION MANUAL.

Table	Max. Pier Spacing (ft)	Max. Pier Load (lbs)	Max. Pier Spacing (ft)	Max. Pier Load (lbs)
1	15	95	4375	1
2	33	55	4375	2
3	45	2	1188	3
4	48	8	1188	4

Table	Max. Pier Spacing (ft)	Max. Pier Load (lbs)	Max. Pier Spacing (ft)	Max. Pier Load (lbs)
1	15	95	4375	1
2	33	55	4375	2
3	45	2	1188	3
4	48	8	1188	4



PIER LEGEND	
□	SUPPORT UNDER MATING OPENING
■	SUPPORT AT MATING COLUMN
▨	SUPPORT UNDER MATING WALL
▩	PIER POKY/PROCESSED ENTRY
□	PIER MAIN BEAM
▨	PIER PERIMETER
●	TE-DOWN SUPPORT (QTY PER TBL. N, SEE DETAIL D-6 IN FOUND. PLAN)

SERVICE DROP LEGEND	
E	ELECTRICAL DROP
W	WATER INLET
D	DWY PLUMBING DROP
G	GAS INLET

- GENERAL NOTES:
- PIER LOADS SHOWN ARE TO BE USED TO SIZE THE FOOTINGS BELOW THE MARRIAGEWALL FOR COLUMN SUPPORT PIERS. REFER TO TABLES 6b AND 6c IN THE INSTALLATION MANUAL FOR LOAD ON FRAME PIER FOOTINGS. REFER TO TABLES 7b AND 7c IN THE INSTALLATION MANUAL FOR LOAD ON FRAME PIER FOOTINGS THAT REQUIRE PERIMETER BLOCKING. REFER TO TABLES 10 AND 10a TO DETERMINE FOOTING SIZE FOR ALL PIERS.
 - REFER TO TABLE 9 FOR PIER CONFIGURATION AND MAXIMUM ALLOWABLE HEIGHTS. CROSS REFERENCE THE PIER HEIGHT WITH THE MAXIMUM ALLOWABLE FLOOR HEIGHT LISTED IN THE FRAME TIEDOWN CHARTS (TABLE 18, 19, AND 20). FLOOR WIDTH SHOWN IS FOR STANDARD PRODUCT ONLY. CONTACT THE MFG PLANT FOR SPECIFICATIONS OF OPTIONS ORDERED.
 - SERVICE DROP LOCATIONS IDENTIFIED ARE APPROXIMATE. THE MAXIMUM SPACING FOR FRAME SUPPORT PIERS FOR 8" I-BEAMS IS 8 FEET, 10" & 12" I-BEAMS ARE 10 FEET.

144 SQ. FT. STD PLAN CONDITIONE
 SQ. FT. (W/OPT. REFRIG./ACCESS CONDITIONE)
CMH
 MANUFACTURING
 Model # 32603A Drawing # 30M
 Date: 03/20/04 Rev: 009
 Product Designer: JDC
PIER LOADS