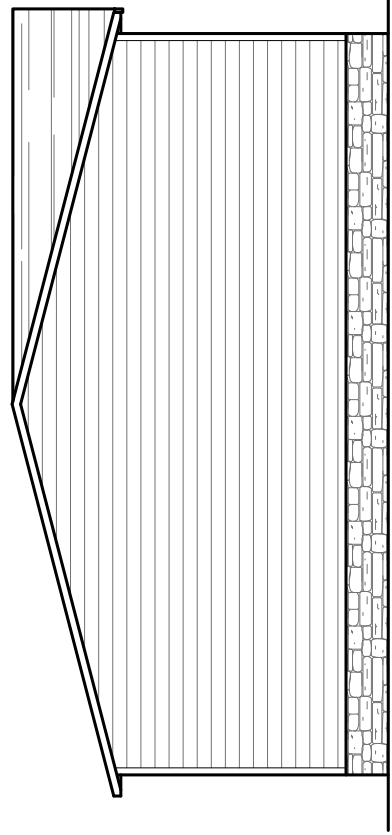
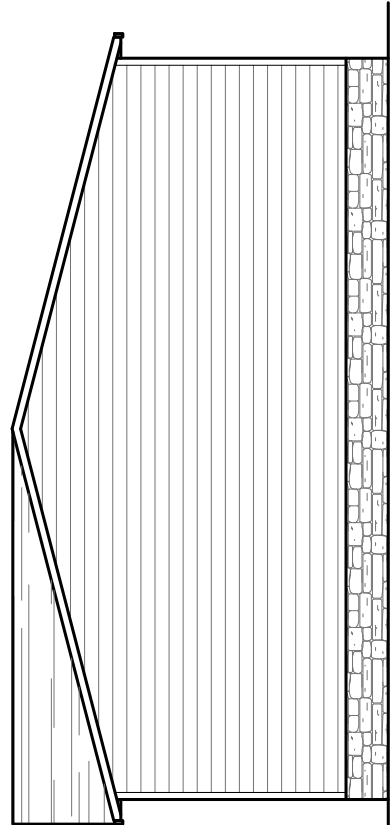


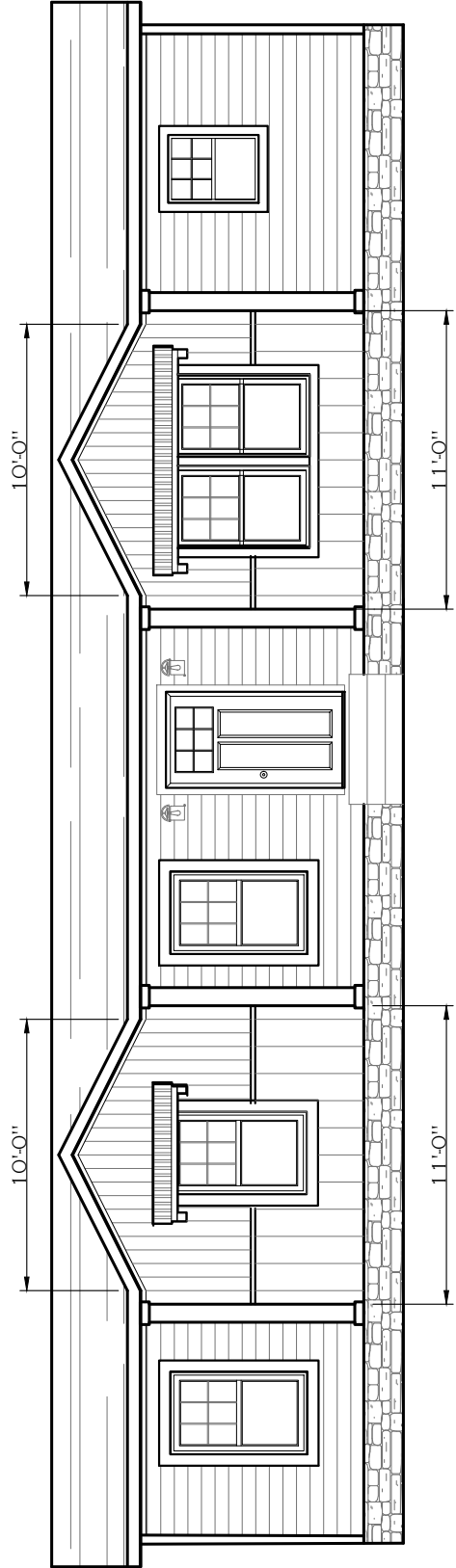
REAR ELEVATION



LEFT SIDE ELEVATION



RIGHT SIDE ELEVATION

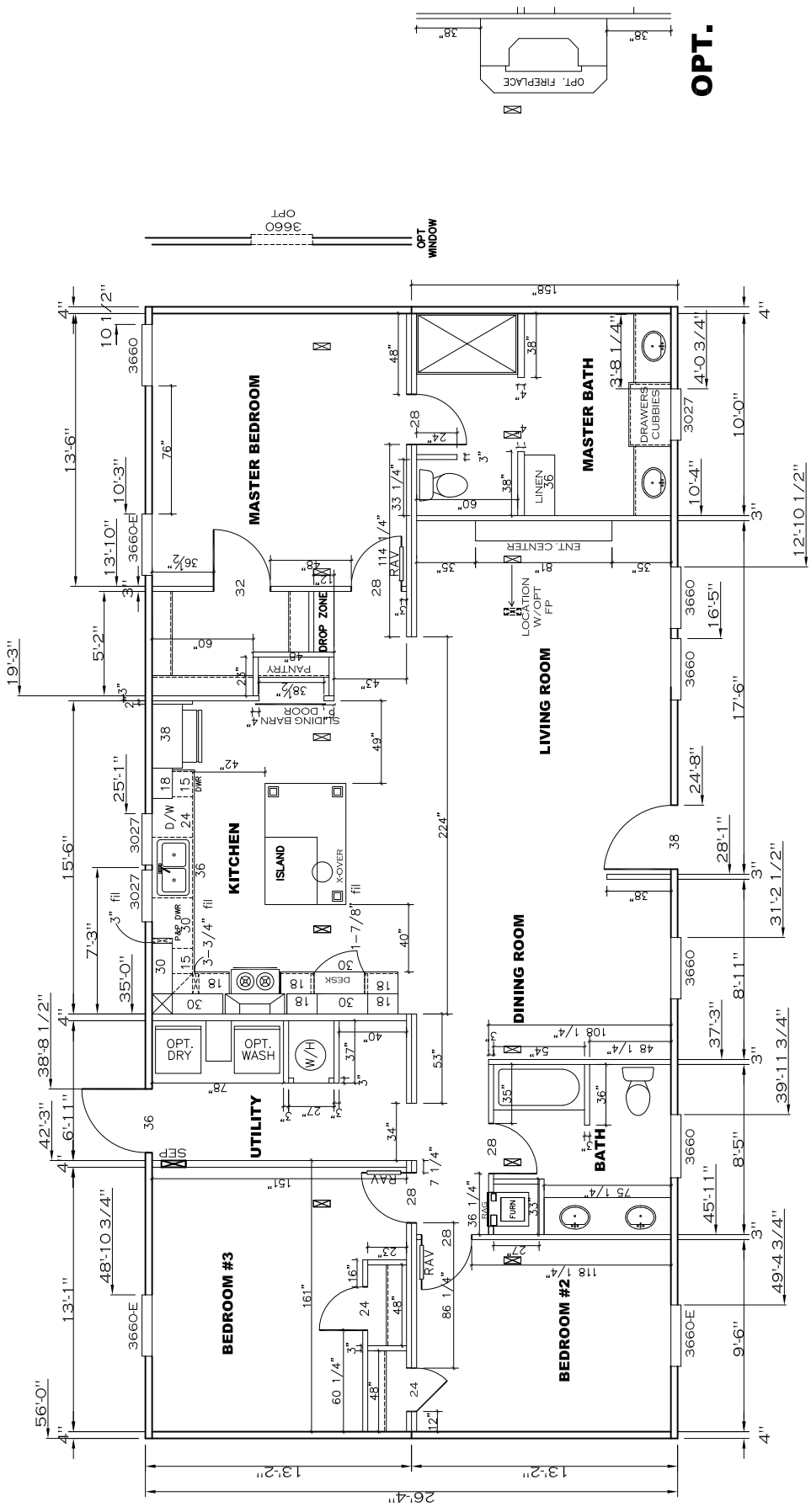


1474 SQ.FT. (STD PLAN "CONDITIONED")
 SQ.FT. (W/OPT. PORCH/RECESS "CONDITIONED")

CMH MANUFACTURING	Model #: SUT2B5G3E	Drawing #:
Product Designer: JDC	Date: 9/11/15	Scale: NTS
28' x 56' Solution		38M155
ELEVATION		



1474 SQ.FT.
 Model #: 51T28563E
 28 x 56 Solution
 Drawing #:
 38M155

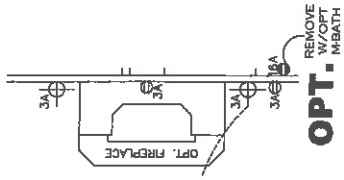
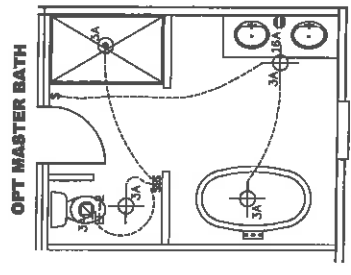
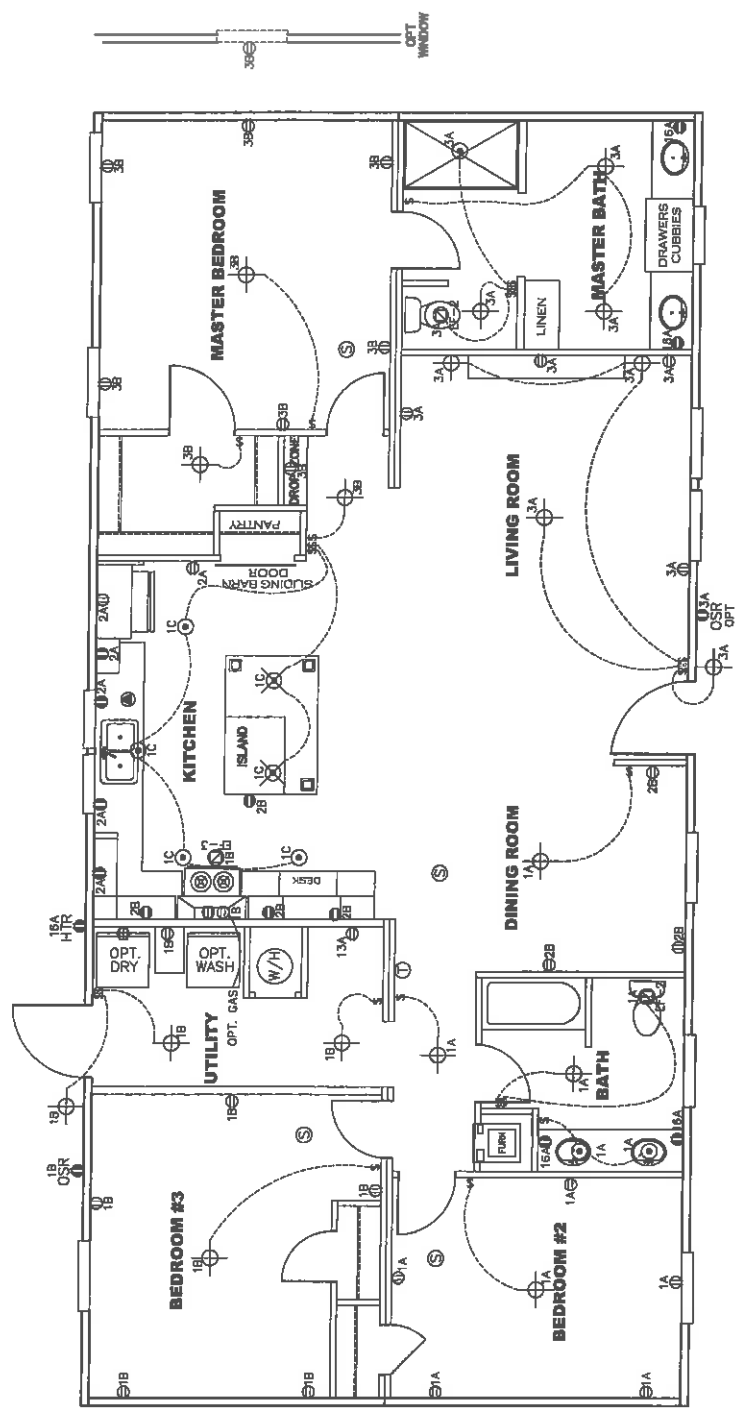


OPT.

1474 SQ.FT. (STD PLAN "CONDITIONED")
 SQ.FT. (W/OPT. PORCH/RECESS "CONDITIONED")

CMH MANUFACTURING	Model #: 5L128563E	Drawing #:
	Date: 9/1/18	Scale: NTS
Product Designer: JDC	28 x 56 Solution	
FLOOR PLAN		
REVISION ECR-787863 1/7/19 JDC		

CIRCUIT	CIRCUIT #	WIRE	BREAKER	CIRCUIT #	WIRE	BREAKER	CIRCUIT #	WIRE	BREAKER	CIRCUIT #	WIRE	BREAKER
LIGHT/RECEP	1A,1B,1C,3A,3B	14-2	15-SP	4A,6B	SEE NOTE #8	SEE NOTE #8	BATHROOM	16A	12-2	20-SP	12-2	20-SP
KITCHEN/DINING	2A,2B	12-2	20-SP	5B,7A	SEE NOTE #8	SEE NOTE #8	OPT. G./NSP	9B	SEE NOTE #8	SEE NOTE #8	SEE NOTE #8	SEE NOTE #8
WASHER	12A	12-2	20-SP	6A,8A,B,10A,B	SEE NOTE #8	SEE NOTE #8	OPT. SHT. W/ JAC	11A,B	SEE NOTE #8	SEE NOTE #8	SEE NOTE #8	SEE NOTE #8
DRYER	5A,7B	SEE NOTE #8	SEE NOTE #8	9A	SEE NOTE #8	SEE NOTE #8	FREEZER	13A	SEE NOTE #8	SEE NOTE #8	SEE NOTE #8	SEE NOTE #8



APPROVED
REVISED
 JAN 28 2019
 FP-28-5157
APPROVED

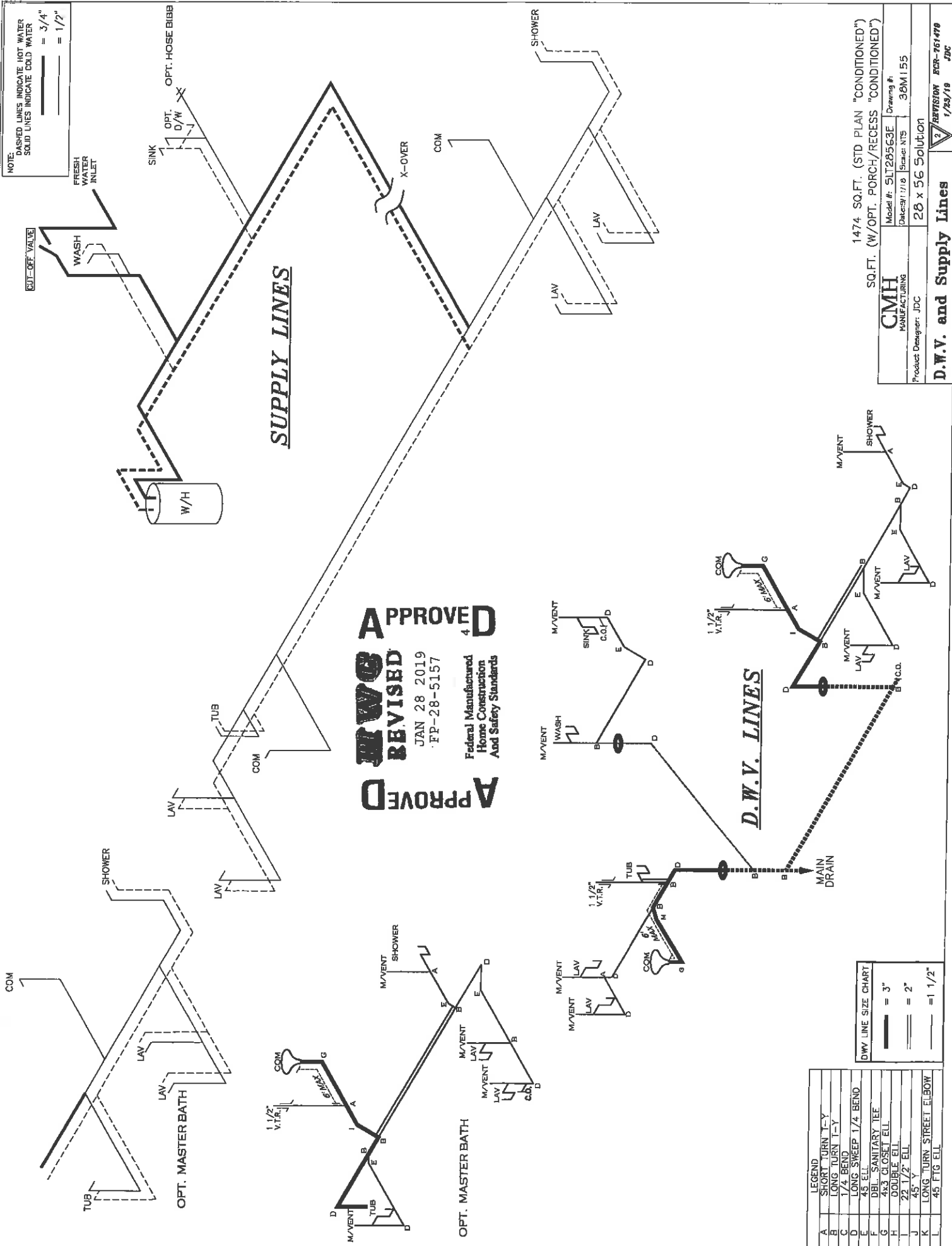
- NOTES:
- ALL CIRCUITS SHOWN ARE FOR REFERENCE AND MAY BE CHANGED BASED ON OPTIONAL COMPONENTS INSTALLED IN THE HOME.
 - REFER TO EL SECTION OF THE DAPIA FOR SYMBOL CHART.
 - EITHER LIGHT OR RECEPTACLE MUST CONNECT TO SWITCH.
 - EF-1= 50 CFM EXHAUST FAN REQUIRED FOR THERMAL ZONE III THERMAL ZONES I & II MAY USE FAN OR WINDOW W/1.5 SQ. FT. OPENABLE GLASS.
 - EF-2= 50 CFM EXHAUST FAN REQUIRED THERMAL ZONE I, II, AND III.
 - EF-3= 100 CFM RANGE EXHAUST FAN, SWITCH AT HOOD.
 - EF-4= WHOLE HOUSE VENTILATION PER REQUIREMENTS IN S-HV-10 & 10A OR M-HV-11 & 11A OF DAPIA.
 - REFER TO EL SECTION OF THE DAPIA OR THE MFG. INSTALLATION INSTRUCTIONS FOR PROPER WIRE SIZE AND BREAKER SIZE FOR SPECIFIC APPLIANCE AND MODEL BEING INSTALLED.
 - ALL SMOKE ALARMS TO BE LOCATED ON THE CEILING.
 - DIMENSIONS SHOWN ON PRINT ARE APPROXIMATE AND TO BE USED ONLY AS A GUIDELINE.

1474 SQ.FT. (STD PLAN "CONDITIONED")
 SQ.FT. (W/OPT. PORCH/RECESS "CONDITIONED")

CMH
 MANUFACTURING
 Product Designer: JDC

Model #: 51120563E
 Drawing #: 38M155
 Date: 1/23/18
 Scale: NTS

ELECTRICAL PLAN-06
 REVISION: ECR-751478
 1/23/18 JDC



NOTE: DASHED LINES INDICATE HOT WATER
SOLID LINES INDICATE COLD WATER
— = 3/4"
— = 1/2"

SUPPLY LINES

APPROVED
REVISBD
 JAN 28 2019
 FP-28-5157
APPROVED
 Federal Manufactured
 Home Construction
 And Safety Standards

D.W.V. LINES

1474 SQ.FT. (STD PLAN "CONDITIONED")
 SQ.FT. (W/OPT. PORCH/RECESS "CONDITIONED")
CMH
 MANUFACTURING
 Model #: 51T28563E Drawing #: 38M155
 Date: 1/17/18 Issue: NTS
 Product Designer: JDC
28 X 56 SOLUTION
D.W.V. and Supply Lines
 REVISION ECR-261478
 1/25/18 JDC

LEGEND

A	SHORT TURN T-Y
B	LONG TURN T-Y
C	1/4 BEND
D	LONG SWEEP 1/4 BEND
E	45 ELL
F	DBL. SANITARY TEE
G	4x3 GLOSET ELL
H	DOUBLE ELL
I	22 1/2" ELL
J	45° Y
K	LONG TURN STREET EL.BOW
L	45 FTG ELL

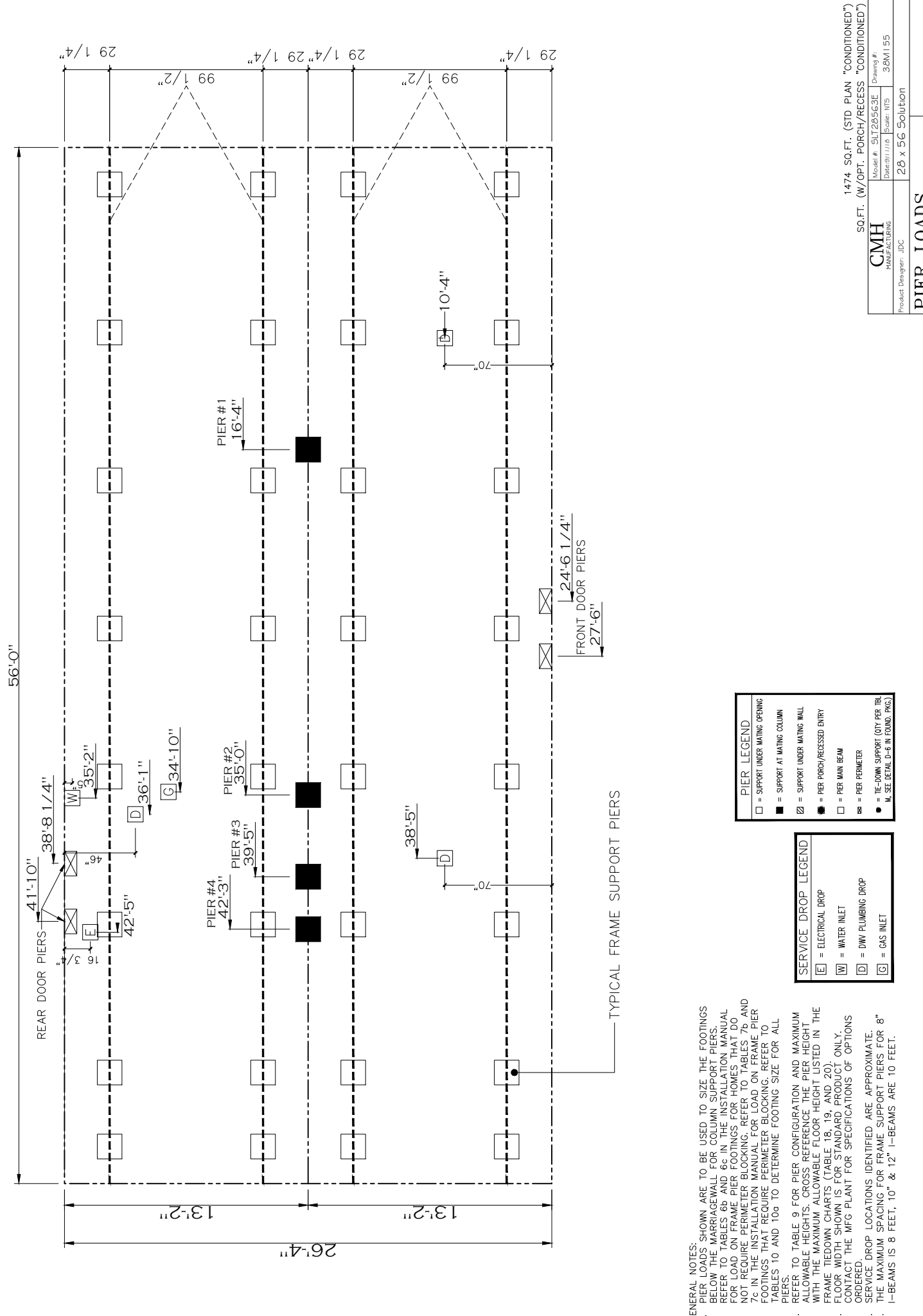
DWV LINE SIZE CHART

—	= 3"
—	= 2"
—	= 1 1/2"

20 lb ROOF LOAD SIDEWALL OPENING PIER LOAD		SIDEWALL OPENING (FT) REQUIRED PIER LOAD (LBS)				
3	4	5	6	8	10	
1175	1330	1485	1640	1950	2260	

*FOR 30 lb & 40 lb ROOF LOAD REFER TO TABLES 7b & 7c IN THE INSTALLATION MANUAL.

20 psf Roof Live Load			30 psf Roof Live Load			40 psf Roof Live Load		
Column Pier #	Distance from Eave (ft)	Pier Load (lbs)	Column Pier #	Distance from Eave (ft)	Pier Load (lbs)	Column Pier #	Distance from Eave (ft)	Pier Load (lbs)
1	16.33	4087	1	16.33	6370	1	16.33	7862
2	35	4087	2	35	6370	2	35	7862
3	39.42	959	3	39.42	2199	3	39.42	2648
4	42.25	959	4	42.25	2199	4	42.25	2648



GENERAL NOTES:
 1. PIER LOADS SHOWN ARE TO BE USED TO SUPPORT THE FOOTINGS BELOW THE MARRIAGEWALL FOR COLUMN SUPPORT PIERS. REFER TO TABLES 6b AND 6c IN THE INSTALLATION MANUAL FOR LOAD ON FRAME PIER FOOTINGS FOR HOMES THAT DO NOT REQUIRE PERIMETER BLOCKING. REFER TO TABLES 7b AND 7c IN THE INSTALLATION MANUAL FOR LOAD ON FRAME PIER FOOTINGS THAT REQUIRE PERIMETER BLOCKING. REFER TO TABLES 10 AND 10g TO DETERMINE FOOTING SIZE FOR ALL PIERS.
 2. REFER TO TABLE 9 FOR PIER CONFIGURATION AND MAXIMUM ALLOWABLE HEIGHTS. CROSS REFERENCE THE PIER HEIGHT WITH THE MAXIMUM ALLOWABLE FLOOR HEIGHT LISTED IN THE FRAME TIEDOWN CHARTS (TABLE 18, 19, AND 20).
 3. FLOOR WIDTH SHOWN IS FOR STANDARD PRODUCT ONLY. CONTACT THE MFG PLANT FOR SPECIFICATIONS OF OPTIONS ORDERED.
 4. SERVICE DROP LOCATIONS IDENTIFIED ARE APPROXIMATE. THE MAXIMUM SPACING FOR FRAME SUPPORT PIERS FOR 8" I-BEAMS IS 8 FEET, 10" & 12" I-BEAMS ARE 10 FEET.

PIER LEGEND	
□	= SUPPORT UNDER MATING OPENING
■	= SUPPORT UNDER MATING COLUMN
⊘	= SUPPORT UNDER MATING WALL
◼	= PIER PORCH/RECESS ENTRY
□	= PIER MAIN BEAM
⊞	= PIER PERIMETER
●	= TIE-DOWN SUPPORT (QTY PER IRL)
M	= SEE DETAIL D-6 IN FOUND. PKG.

SERVICE DROP LEGEND	
E	= ELECTRICAL DROP
W	= WATER INLET
D	= DWV PLUMBING DROP
G	= GAS INLET