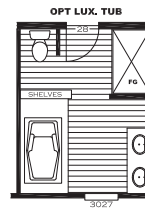
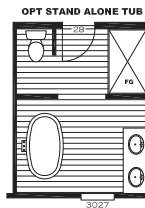
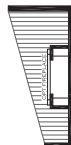
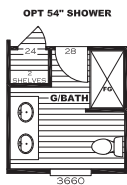
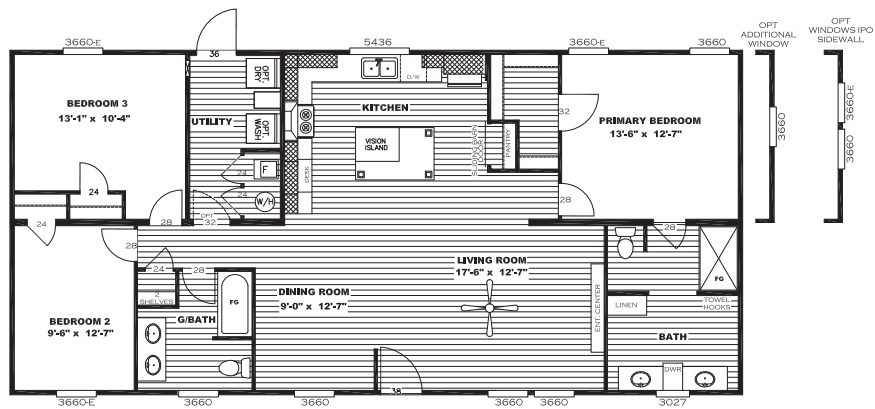


# Sulphur Springs



## Breeze Farmhouse

CLB28563E | 3 beds | 2 baths | 1,475 sq. ft. | 28x56



Sulphur Springs

2600 MAIN STREET SULPHUR SPRINGS, TX 75482 | 903.439.0242 | CLAYTONSS.COM

## Standard Features

- 8' Flat Ceilings
- Six Panel Steel Front Door
- Porch Lights – Exterior Doors
- ecobee® Smart Thermostat
- 16" O.C. Floor Joists
- 2 Panel Interior Doors
- Exterior Electrical Receptable on Rear Sidewall
- 42" DuraCraft® Cabinets in Kitchen
- 40 Gallon Water Heater
- Carrier® SmartComfort® Furnace
- Water Shutoffs Throughout
- Trim Around Mirrors
- Recessed LED Lighting
- 2" Mini-Blinds
- Frigidaire Appliances
- Beau Flor Vinyl Flooring
- Carpet by Shaw
- Black Dishwasher
- Faucet on Rear Sidewall
- White Smart Panel Fascia
- 5" White Lineal Trim
- Plumb for Icemaker
- Matte Black Fixtures
- Double Lavs in Primary bath
- Towel Bar & Tissue Holders
- 8" deep Stainless Steel Sink
- Marriage Line Close up Beam
- Lino in Main Areas
- Clear Low-E Argon Insulated Windows
- Wire Utility Shelf

## Available Options

- OSB Wrap
- Overhead Duct Vents
- Smart Panel
- Dormer
- Columns
- Cottage Rear Door
- Wind Zone 2 Construction
- Recessed Outriggers
- Extra Exterior Electric Receptacle
- Exterior Faucet
- Luxury Bath
- Shower Only Option
- Fiberglass Tubs / Showers
- Gas Package (No Overhead Vents w/ Gas Furnace)
- Lino Throughout
- Entertainment Center
- Black SxS Refrigerator
- Black Smooth Top Range
- Black Microwave
- Black Gas Range
- Stainless Steel Appliances
- Farmhouse Sink
- Sliding Glass Door
- Additional Windows (Where Applicable)
- Island
- Pendant / Cage Lights over Island
- Optional Door to Utility
- Washer / Dryer
- Upgraded Insulation
- Wire and Brace Ceiling
- Tile Shower 48" or 60"
- Wood Burning Fireplace
- Electric Fireplace

Customer Name: \_\_\_\_\_

Customer Signature: \_\_\_\_\_

Phone Number: \_\_\_\_\_

County: \_\_\_\_\_

CSM: \_\_\_\_\_

**\*\*All Options Subject to Change Without Notice\*\***

The home series, floor plans, photos, renderings, specifications, features, pricing, materials and availability shown will vary by retailer and state, and are subject to change without notice.

