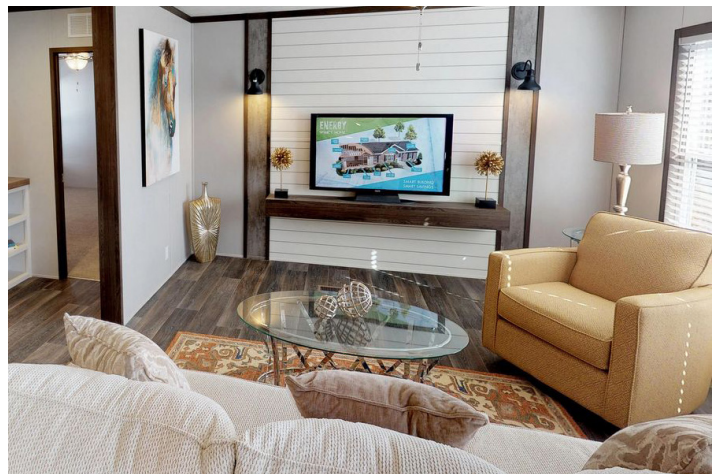
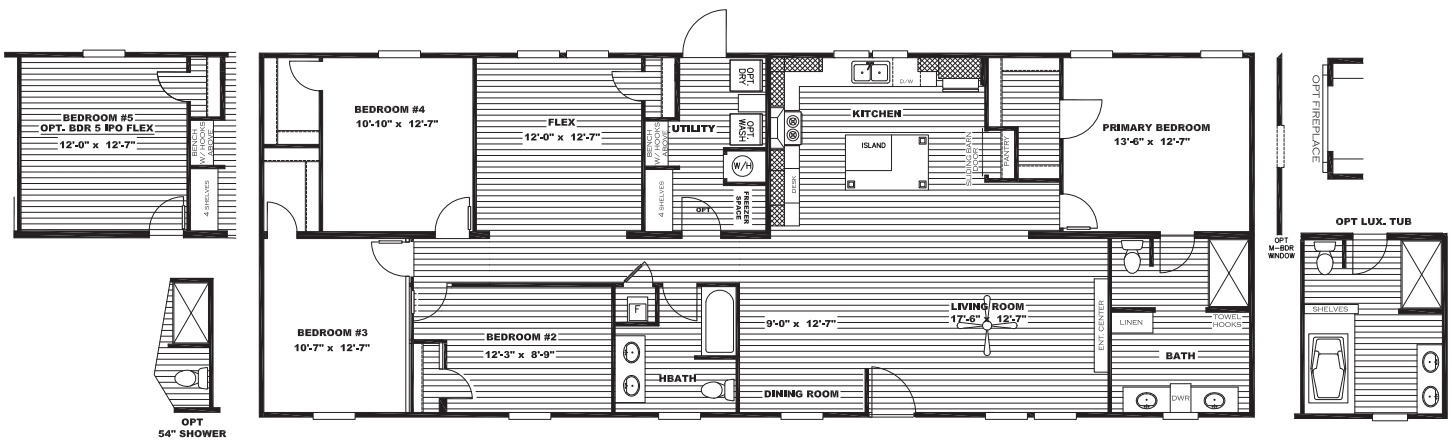


Sulphur Springs

Breeze Farmhouse 72

28x72 | 1896 Sq Ft | 4 Beds | 2 Baths | SLC28724B



Sulphur Springs

2600 MAIN STREET SULPHUR SPRINGS, TX 75482 | 903.439.0242 | CLAYTONSS.COM

Standard Features

- 8' Flat Ceilings
- White Window Lineals – Front of Home
- Upgrade Artisan Front Door
- 9 – Light Cottage Rear Door
- Porch Lights – Exterior Doors
- White Smart Lap Fascia
- *ecobee* Smart Thermostat
- 16" O.C. Floor Joists
- Six Panel Interior Doors
- Exterior Faucet & Electric Receptacle – Rear
- Fiberglass Tubs / Showers
- 42" DuraCraft Cabinets in Kitchen
- Square China Lavs Throughout
- 40 Gallon Water Heater
- Carrier SmartComfort Furnace
- Water Shutoffs Throughout
- Recessed LED Lighting
- 2" Mini-blinds
- Entertainment Center
- Stainless Steel Range Hood
- 26 CF SxS Refrigerator
- Frigidaire Appliances
- White Farmhouse Sink
- Island w/ Cage Light
- Ceiling Fans
- Freezer Receptacle
- Wire Shelf in Utility
- Sliding Barn Door in Kitchen
- Hall Tree
- Low E Insulated Windows
- *Beau Flor* Vinyl Flooring
- 15 oz. Carpet by Shaw
- Black Dishwasher

Available Options

- OSB Wrap
- Overhead Duct Vents
- Smart Panel
- Wind Zone 2 Construction
- Recessed Frame & Outriggers
- Extra Electric Receptacle (Front)
- Extra Exterior Faucet (Front)
- Additional Master Bedroom Window (End-Wall)
- Gas Furnace (No Overhead Vents w/ Gas Furnace)
- Gas Water Heater (50 Gallon)
- Black Gas Range
- 50 Gallon Electric Water Heater
- Lino Throughout
- Fireplace
- Smooth Top Range
- Stainless Steel Farmhouse Sink
- Stainless Steel Appliances
- Washer / Dryer
- 5th Bedroom Option
- Décor Package 1: Alabaster White Color Scheme
- Décor Package 2: Emberwood Color Scheme

Customer Name: _____

Customer Signature: _____

Phone Number: _____

County: _____

CSM: _____

****All Options Subject to Change Without Notice****

