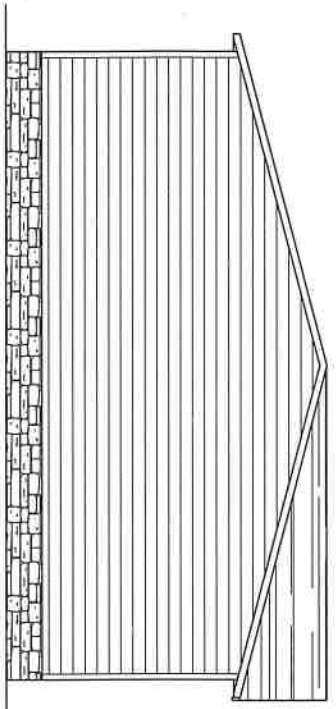
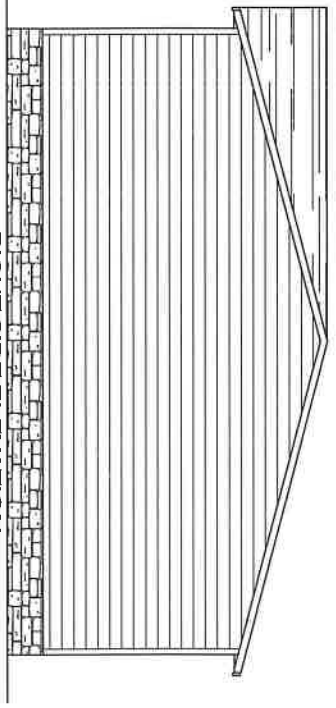


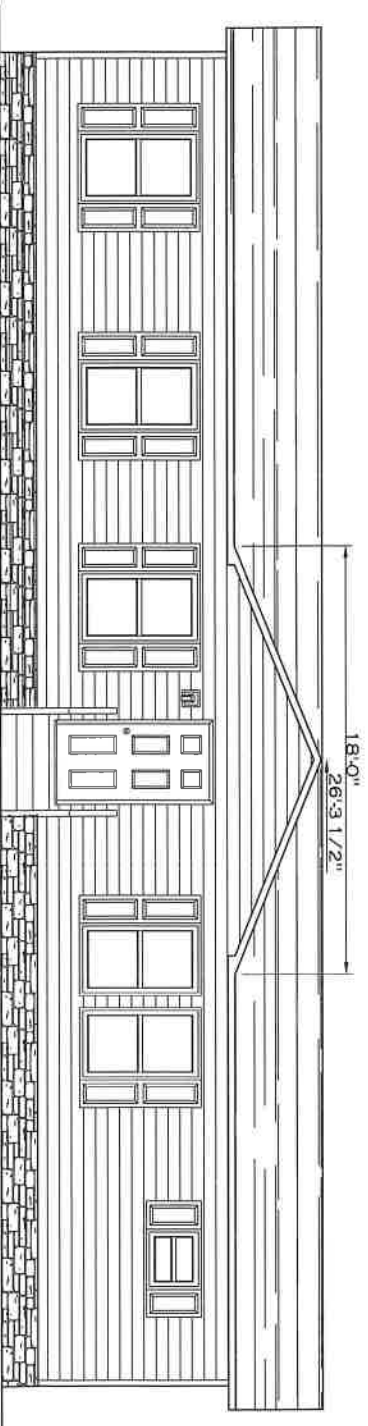
REAR ELEVATION



LEFT SIDE ELEVATION



RIGHT SIDE ELEVATION



FRONT ELEVATION

REV:6/26/2020 4:30 PM

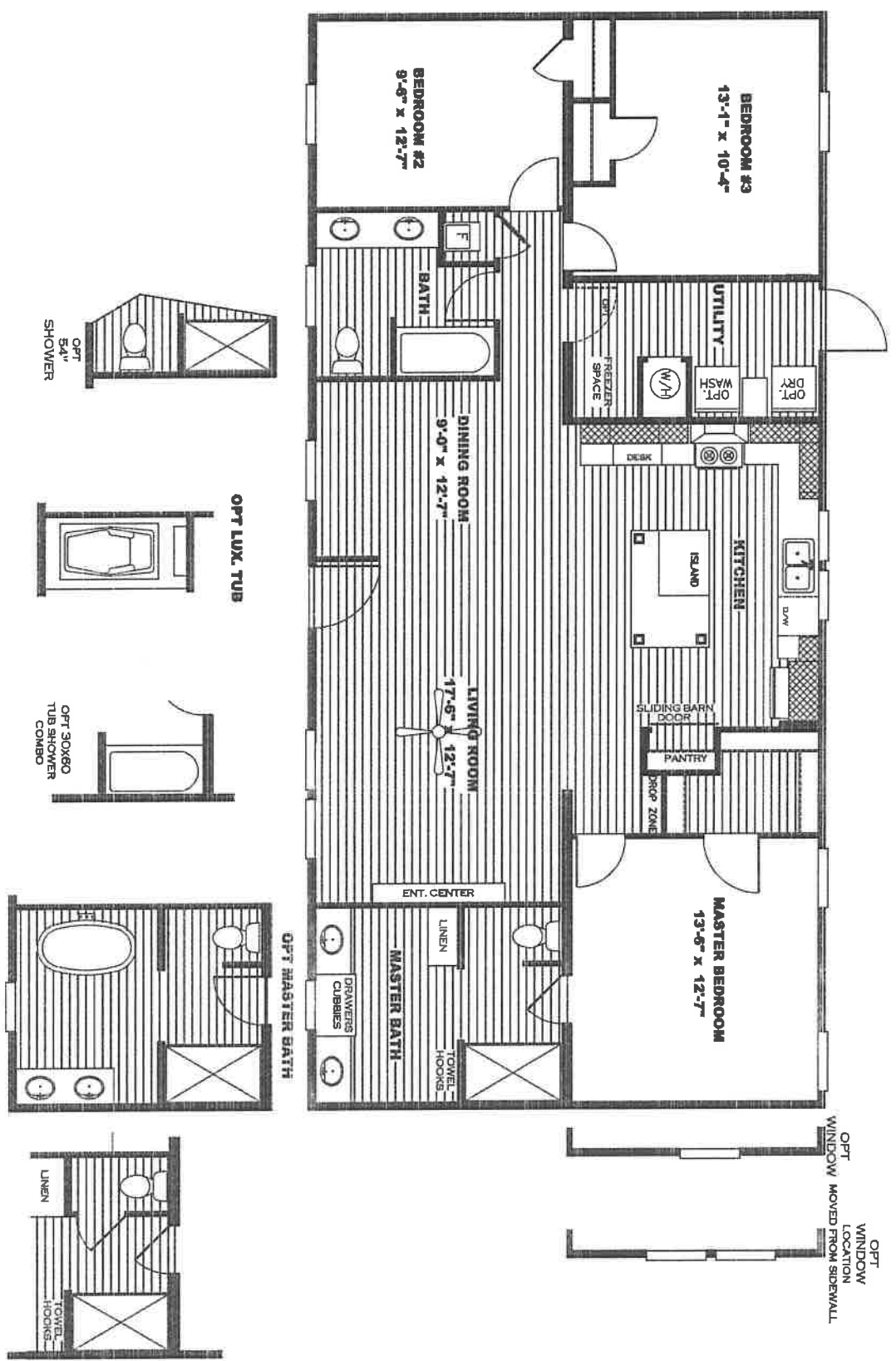
1474 SQ.FT. (STD. PLAN "CONDITIONED")	
SQ.FT. (W/OPT. FLOOR/RECESS "CONDITIONED")	
CMH	Model # 30720553E
MANUFACTURE	Product Line Farm 115
Product Designer: JDC	30M155
28 x 56 Solution	

ELEVATION

REV:6/26/2020 4:25 PM

7-1-2020

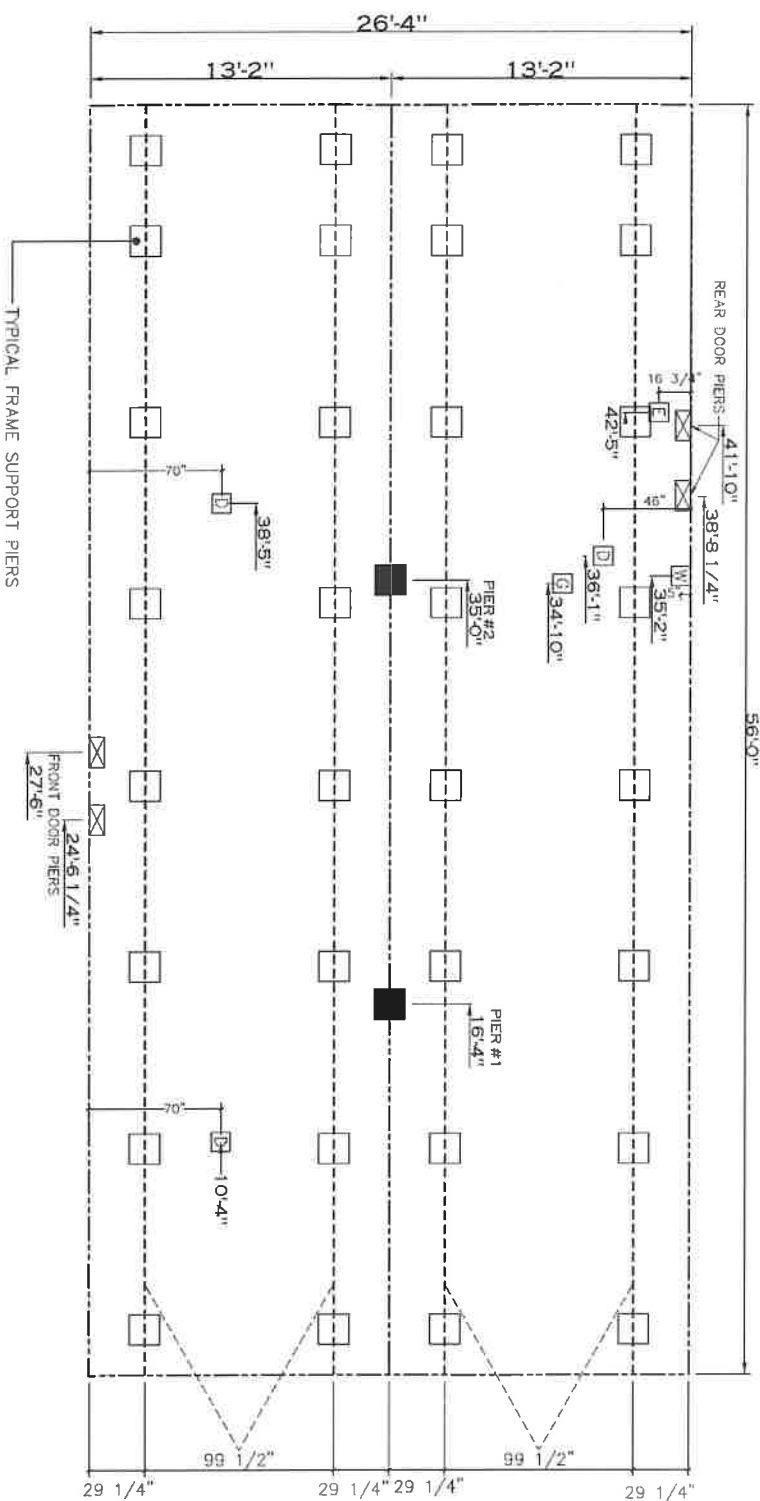
1,474 SQ.FT.
MODEL# SLT28563E
SOLUTION
DRAWING# 38M155



20 lb ROOF LOAD	SERVICE SPACING (FT)									
SMALL OPENING PIER LOAD	3	4	5	6	8	10	ROOFING REQ. LOAD (LBS)			
28" BOX WIDTH	1175	1330	1485	1640	1950	2260				

*FOR 30 LB & 40 LB ROOF LOAD REFER TO TABLES 7b & 7c IN THE INSTALLATION MANUAL

20 psf Roof Live Load			30 psf Roof Live Load			40 psf Roof Live Load		
Column Pier #	Distance from Hitch	Pier Load (lbs)	Column Pier #	Distance from Hitch	Pier Load (lbs)	Column Pier #	Distance from Hitch	Pier Load (lbs)
1	16.33	4087	1	16.33	6370	1	16.33	7862
2	35	4087	2	35	6370	2	35	7862



- GENERAL NOTES:
- PIER LOADS SHOWN ARE TO BE USED TO SIZE THE FOOTINGS BELOW THE MARRIAGEWALL FOR COLUMN SUPPORT PIERS. REFER TO TABLES 6b AND 6c IN THE INSTALLATION MANUAL FOR LOAD ON FRAME PIER FOOTINGS FOR HOMES THAT DO NOT REQUIRE PERMETER BLOCKING. REFER TO TABLES 7b AND 7c IN THE INSTALLATION MANUAL FOR HOMES THAT DO REQUIRE PERMETER BLOCKING. REFER TO TABLES 10 AND 10a TO DETERMINE FOOTING SIZE FOR ALL PIERS.
 - REFER TO TABLE 9 FOR PIER CONFIGURATION AND MAXIMUM ALLOWABLE HEIGHTS. CONSULT REFERENCE TO PIER HEIGHT WITH THE MAXIMUM ALLOWABLE FLOOR HEIGHT LISTED IN THE FRAME TIEDOWN CHARTS (TABLE 18, 19, AND 20).
 - FLOOR WIDTH SHOWN IS FOR STANDARD PRODUCT ONLY. CONTACT THE MFG PLANT FOR SPECIFICATIONS OF OPTIONS.
 - SERVICE DROP LOCATIONS IDENTIFIED ARE APPROXIMATE. THE MAXIMUM SPACING FOR FRAME SUPPORT PIERS FOR 8" I-BEAMS IS 8 FEET, 10" & 12" I-BEAMS ARE 10 FEET.

SERVICE DROP LEGEND

- = ELECTRICAL DROP
- = WATER INLET
- = LOW PLUMBING DROP
- = GAS INLET

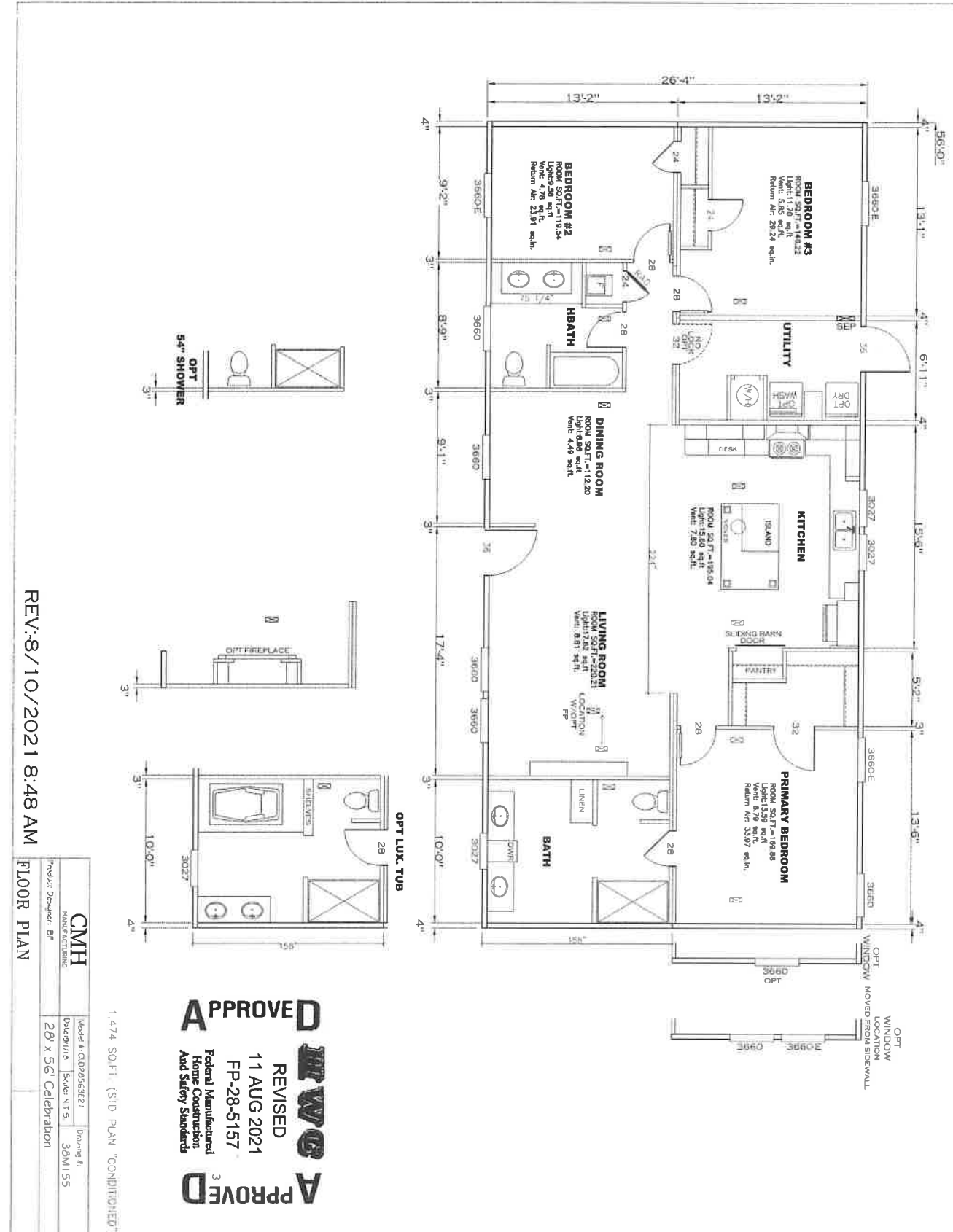
PIER LEGEND

- = SUPPORT UNDER WINDOW
- = SUPPORT UNDER DOOR
- = SUPPORT UNDER WALKWAY
- = SUPPORT UNDER WALKWAY
- = PERIMETER BLOCKING
- = PERIMETER BLOCKING
- = TIEDOWN SUPPORT (NOT FOR BEAMS SEE DETAIL D-4 IN FOUNDATION)

1/6/2021

REV: 1/6/2021 1:10 PM

1474 S.O.F.T. (STD PLAN *CONFORMANCE*)
 S.O.F.T. (W/2PT. FRONT/RECESS *CONFORMANCE*)
 CMH
 29 x 36 SOLUTION



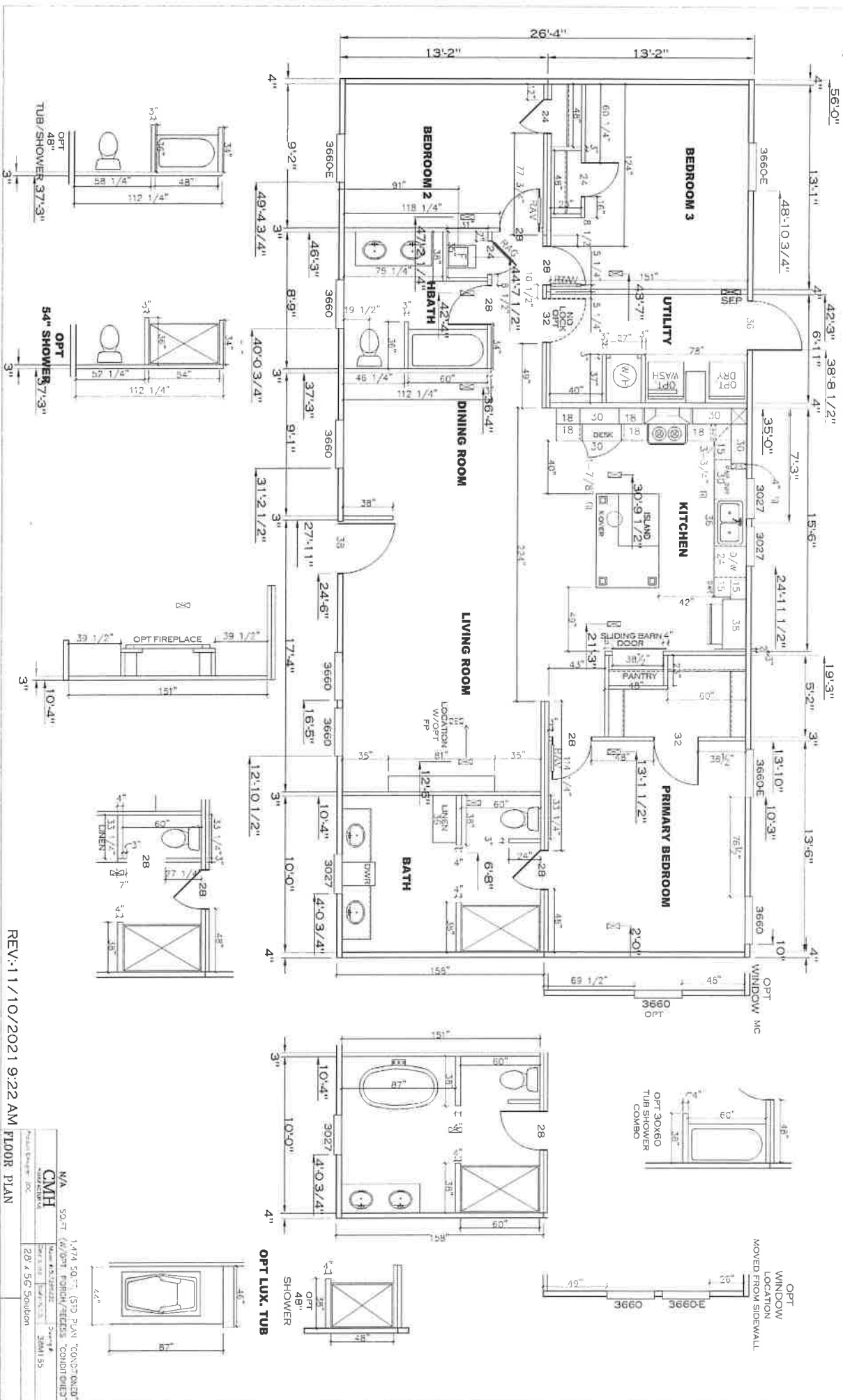
REV:8/10/2021 8:48 AM

CMH MANUFACTURING		Model #: C0295162821	Drawing #: 30M1155
Product Designer: BF	Scale: N.T.S.	Date: 11/15	

FLOOR PLAN

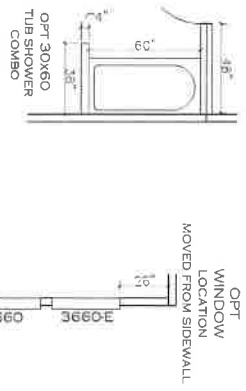
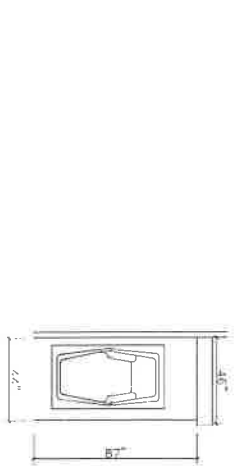
APPROVED
REVISED
11 AUG 2021
FP-28-5157
Federal Manufactured Home Construction And Safety Standards

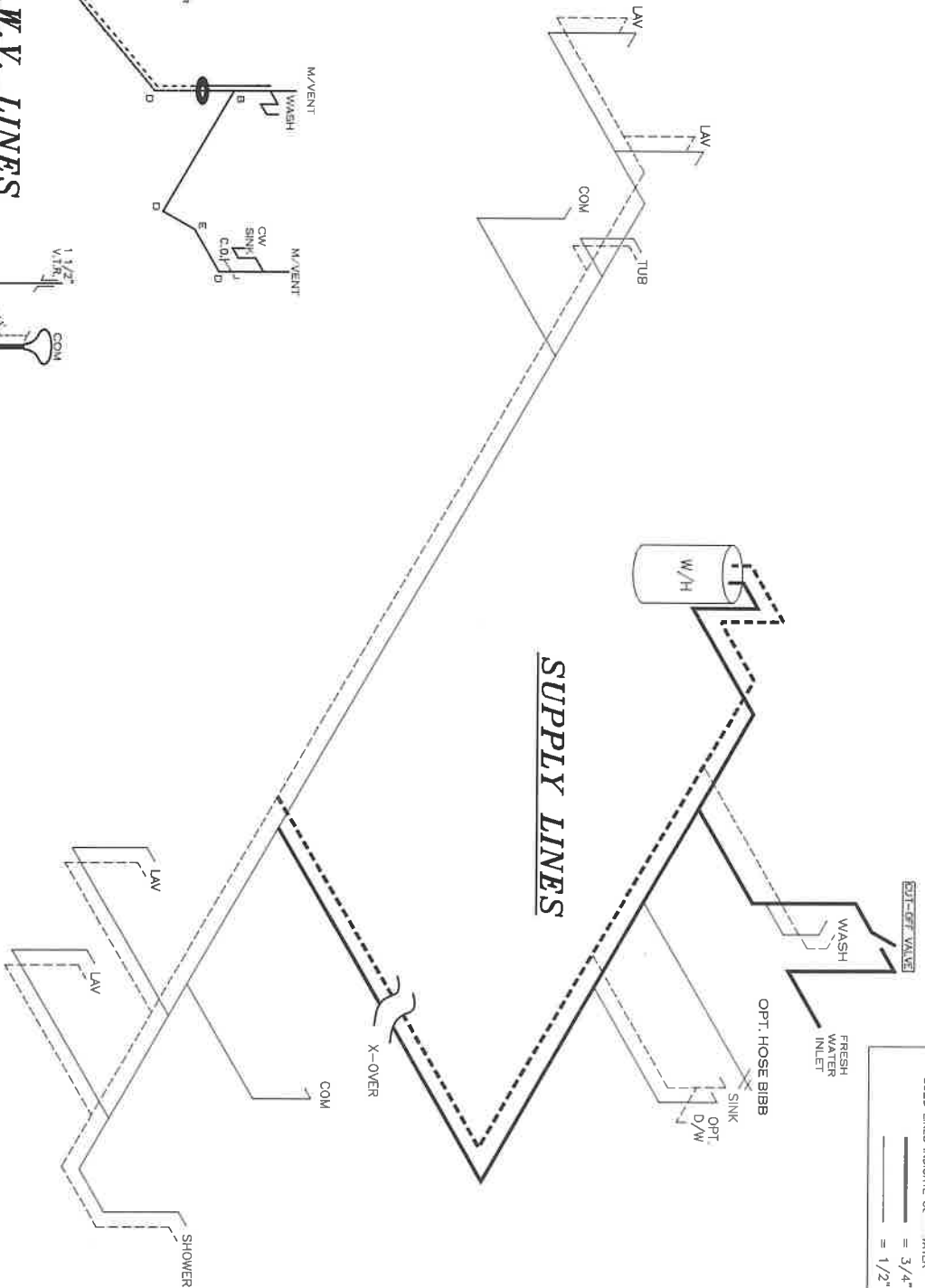
1,474 SQ.FT. (STD PLAN "CONDITIOHEED")



REV: 11/10/2021 9:22 AM FLOOR PLAN

Project Name:	1474 SQ. FT. (SFD) PLAN (COND'NED)
Client:	CMH
Architect:	287 S. Goulson
Scale:	1/8" = 1'-0"
Date:	11/10/2021
Drawn by:	3MM/SS
Checked by:	
Project Number:	





LEGEND

A	SHORT TURN T-Y
B	LONG TURN T-Y
C	1/4 BEND
D	LONG SWEEP 1/4 BEND
E	45 ELL
F	DBL. SANITARY TEE
G	4X3 C/OSET ELL
H	DOUBLE ELL
I	22 1/2 ELL
J	45 1/2 ELL
K	LONG TURN STREET ELBOW
L	45 FTG ELL

DWV LINE SIZE CHART

—	= 3"
—	= 2"
—	= 1 1/2"

APPROVED

REVISED

05 OCT 2021

FP-28-5157

Federal Manufacture
Home Construction
And Safety Standards

APPROVED

1,474 SQ.FT. (STD PLAN "CONDITIONED")
 SQ.FT. (W/OPT. PORCH/RECESS "CONDITIONED")

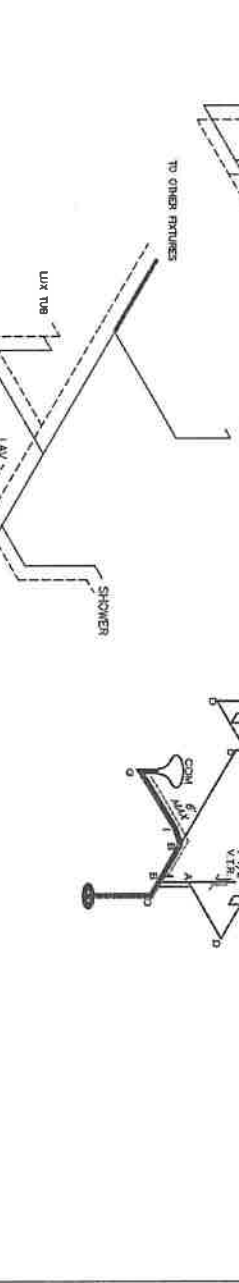
Product Designer: JDC	Model #: 51128563E	Drawing #:
Manufacturer: CMH	Date: 3/11/18	Scale: N.T.S.
		38M1155

D.W.V. and Supply Lines

ARRIVISION RCR-320522
 3/25/20 BP

LEGEND	
A	SHORT TURN T-Y
B	LONG TURN T-Y
C	1/4 BEND
D	LONG SWEEP 1/4 BEND
E	45° ELL
F	90° STAIRWAY TEE
G	90° ELBOW
H	DOUBLE ELBOW
I	22 1/2° ELL
J	45° V-ELL
K	LONG TURN STREET ELBOW
L	45° FLD. ELL

PIPE LINE SIZE CHART	
---	= 1/2"
---	= 3/4"
---	= 1"
---	= 1 1/2"



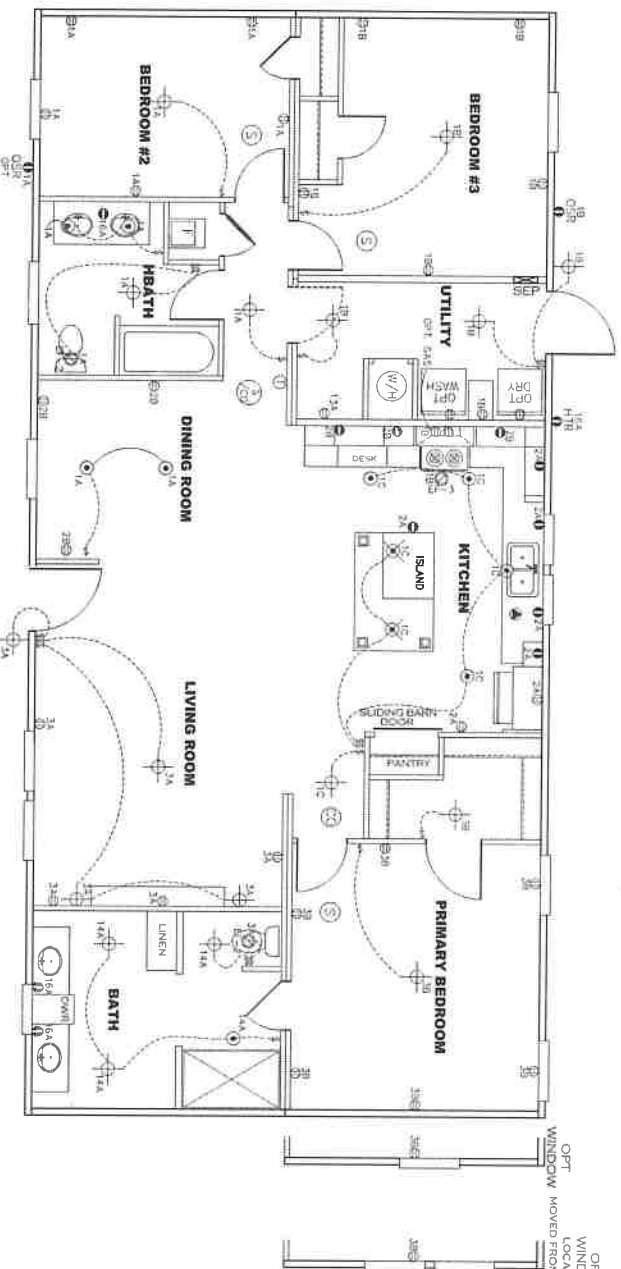
APPROVED
IRWG
 REVISED
 25 JUN 2020
 FP-28-5157
 Federal Manufactured
 Home Construction
 And Safety Standards

REV:6/25/2020 8:14 AM

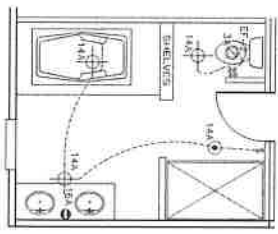
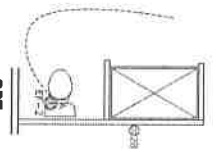
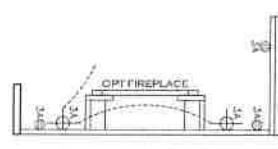
1,474 SQ.FT. (STD PLAN "CONDITIONED")	
N/A SQ.FT. (W/OPT. PORCH/RECESS "CONDITIONED")	
Product Designer: JDC	Model #: SA170535C
Manufacturer: CMH	Date: 11/18
Product Designer: JDC	Model #: 38M155
Manufacturer: CMH	Date: 11/18
Product Designer: JDC	Model #: 38M155
Manufacturer: CMH	Date: 11/18
Product Designer: JDC	Model #: 38M155
Manufacturer: CMH	Date: 11/18
Product Designer: JDC	Model #: 38M155
Manufacturer: CMH	Date: 11/18

OPT. D.W.V. & Supply Lines

CIRCUIT	CIRCUIT #	WIRE	BREAKER	CIRCUIT	CIRCUIT #	WIRE	BREAKER	CIRCUIT	CIRCUIT #	WIRE	BREAKER
LIGHT/FREEZER	1A, 1B, 1C, 3A, 3B, 14A	12-2	15-5P	BATH	15A	12-2	20-5P	WASHER	12A	12-2	20-5P
WASHER	12A	12-2	20-5P	DRYER	12A	12-2	20-5P	WASHER	12A	12-2	20-5P
DRYER	12A	12-2	20-5P	WASHER	12A	12-2	20-5P	DRYER	12A	12-2	20-5P
SMOKE ALARM	4B	SEE NOTE #9		SMOKE ALARM	4B	SEE NOTE #9		SMOKE ALARM	4B	SEE NOTE #9	
BATHROOM	15A	12-2	20-5P	FREEZER	13A	SEE NOTE #8					



- NOTES:
1. ALL CIRCUITS SHOWN ARE FOR REFERENCE AND MAY BE CHANGED BASED ON OPTIONAL COMPONENTS INSTALLED IN THE HOME.
 2. REFER TO DAPPA MANUAL FOR SYMBOL CHART.
 3. EITHER LIGHT OR RECEPTACLE MUST CONNECT TO SWITCH.
 4. EF-1= 50 CFM EXHAUST FAN REQUIRED FOR THERMAL ZONE 10, THERMAL ZONES I & II MAY USE FAN OR WINDOW W/1.5 SQ. FT. OPENABLE GLASS.
 5. EF-2= 50 CFM EXHAUST FAN REQUIRED THERMAL ZONE I, II, AND III.
 6. EF-3= 100 CFM RANGE EXHAUST FAN, SWITCH AT HOOD.
 7. EF-4= WHOLE HOUSE VENTILATION REQUIREMENTS PER DAPPA MANUAL.
 8. REFER TO DAPPA MANUAL OR THE MFG. INSTALLATION INSTRUCTIONS FOR PROPER WIRE SIZE AND BREAKER SIZE FOR SPECIFIC APPLIANCE AND MODEL BEING INSTALLED.
 9. ALL SMOKE ALARMS TO BE LOCATED ON THE CEILING.
 10. CARBON MONOXIDE ALARMS ARE ONLY REQUIRED WHEN HOME HAS EITHER FUEL BURNING APPLIANCE, IS GARAGE READY OR ADDITIONAL INFORMATION.
 11. DIMENSIONS SHOWN ON PRINT ARE APPROXIMATE AND TO BE USED ONLY AS A GUIDELINE.

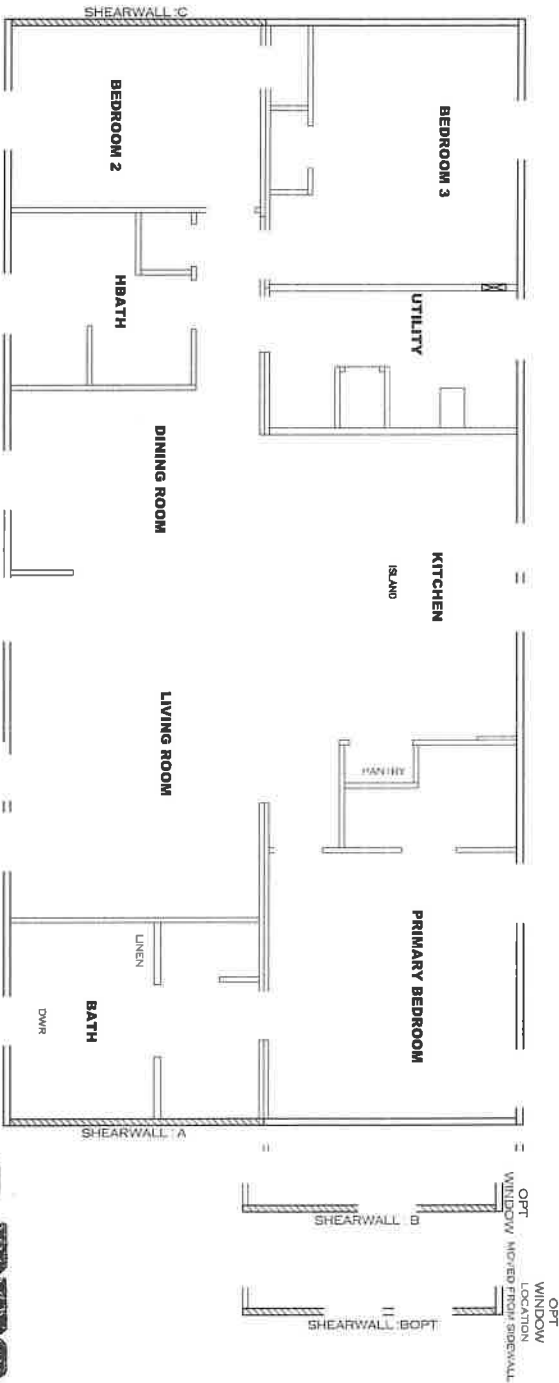


REV:8/11/2021 12:19 PM ELECTRICAL PLAN-06

CMH	Model # C02853C21	Drawn #
Model # C02853C21	Drawn #	38M155
Project Designer: BS	28 x 56' Celebration	

APPROVED
REVISED
 11 AUG 2021
 FP-28-5157
 Federal Manufactured Home Construction And Safety Standards

1474 SQ.FT. (STD PLAN "CONDITIONED")



Model # 38M155-OP1
 Box Width = 158" Double wide
 Box Length = 56 ft 10" MIN. I.BEAM No. Clearestory
 No Skylights No Original Dormer
 No Porches No Sunken Floor
 Joist Size = #2 apr 2x6 Lags 9MKS"
 Minimum Joist Spacing 16"
 No Offset Box
 No Original Dormer
 No Sunken Floor
 No Parapet Roof

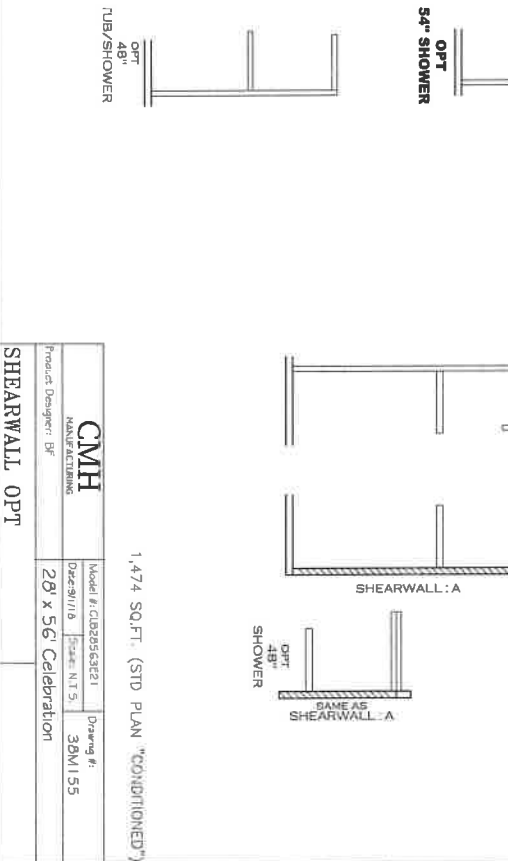
Version R13.19

Designed by: JDC
 4/8/22

APPROVED
 REVISED
 17 MAY 2022
 FP-28-5157
APPROVED

Federal Manufactured Home Construction And Safety Standards

Wind Zone 1 Standard Roof				Wind Zone 2 Standard Roof				Wind Zone 3 Standard Roof				
Diaphragm Construction:				Diaphragm Construction:				Diaphragm Construction:				
Shearwall Dist./Hitch	Length	PLF	# of Joists	Length	PLF	# of Joists	Lags	Length	PLF	# of Joists	Lags	Notes
A	0'	72"	2	A	0'	Full	2	A	0'	Full	2	96 inch sidewall
B	0'	117.5"	2	B	0'	117.5"	4	B	0'	117.5"	4	Split Shearwall
Bopt	0'	75"	2	Bopt	0'	75"	5	Bopt	0'	75"	5	Split Shearwall
C	56'	128"	2	C	56'	Full	2	C	56'	Full	2	Split Shearwall



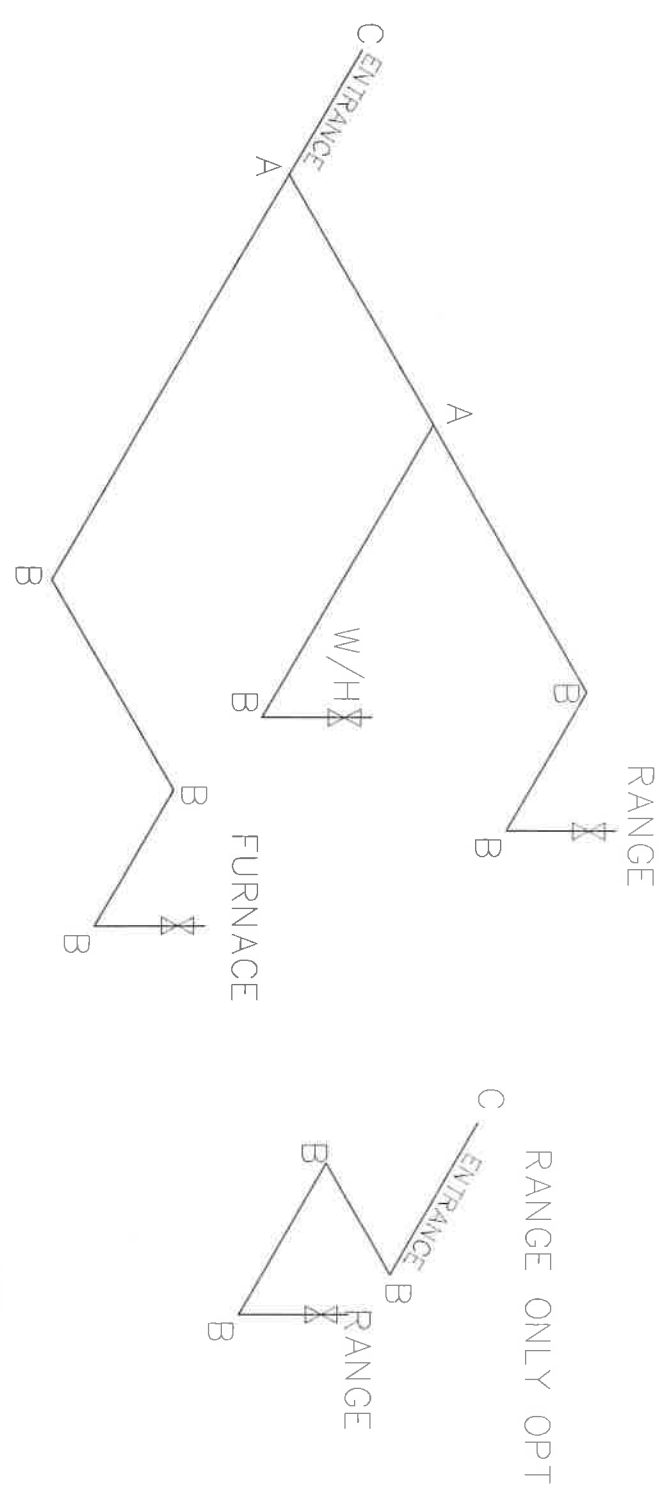
Product Designer: BF	Model #: C182853R21	Drawing #: 38M155
CMMH MANUFACTURING	Order #: 287 x 56' Celebration	Case: N.T.S.

1,474 SQ.FT. (STD PLAN "CONDITIONED")

OPT 48" SHOWER

LEGEND		APPLIANCE BTU'S RATINGS MAX. INPUT	
SYM	FITTINGS	FURNACE	80,000 BTU'S
A	TEE	W/H	36,000 BTU'S
B	90 ELL	RANGE	71,000 BTU'S
X	VALVE	DRYER	N/A BTU'S
C	CAP		

MDL=30'



- NOTES:
- 1) ALL PIPE IS 3/4" I.D. CAST (EXCEPT WHERE NOTED OTHERWISE)
 - 2) MDL=MAX. DETERMINED LENGTH OF PIPE
 - 3) FITTING MAY BE ADDED OR SUBTRACTED TO TRAVERSE VARIATIONS IN AXLE QUANTITY, PLACEMENT, AND FRAME TYPE.
 - 4) INLET LOCATION MAY VARY TO STAY WITHIN MAX. DETERMINED LENGTH

APPROVED **REVISED** **APPROVED**
16 MAR 2022
 FP-28-5157
 Federal Manufactured Home Construction And Safety Standards

GAS LINE DETAIL	
Product Designer: JDC	
N/A	1,474 SQ.FT. (STD PLAN "CONDITIONED")
SQ.FT. (W/OPT. PORCH/RECESS "CONDITIONED")	
Model # 52128563C	Drawing # 30M1155
Date: 3/16	Size: N.T.S.
28' x 56' Solution	