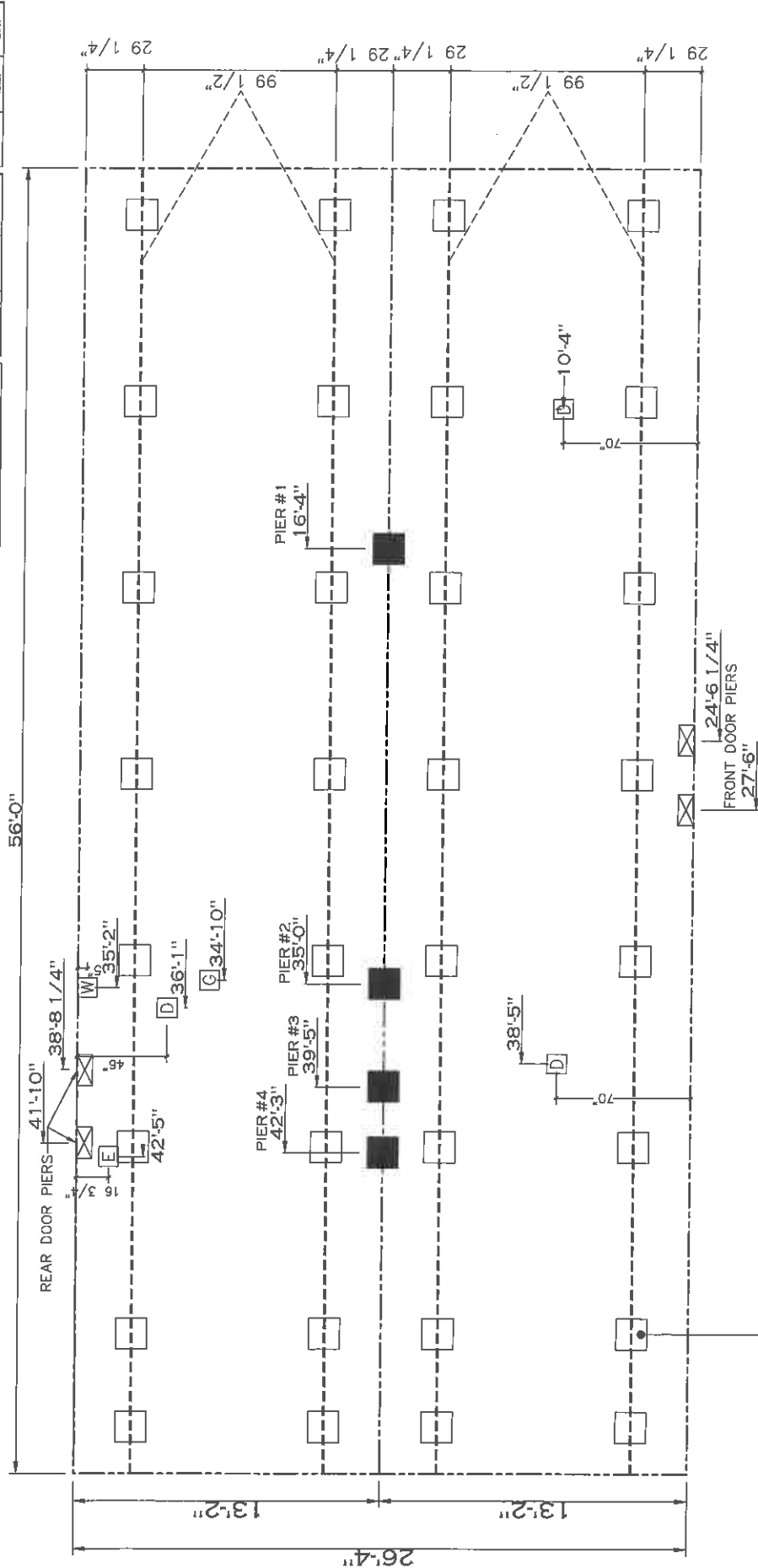


20 lb ROOF LOAD SIDEWALL OPENING PIER LOAD 28' BOX WIDTH	SIDEWALL OPENING (FT) REQUIRED PIER LOAD (LBS)			
	3	4	5	6
	1175	1330	1485	1640
	1950	2260		

*FOR 30 lb & 40 lb ROOF LOAD REFER TO TABLES 7b & 7c IN THE INSTALLATION MANUAL.

28 lb Roof Live Load			30 lb Roof Live Load			40 lb Roof Live Load		
Column Pier #	Distance from Hatch (ft)	Pier Load (lb)	Column Pier #	Distance from Hatch (ft)	Pier Load (lb)	Column Pier #	Distance from Hatch (ft)	Pier Load (lb)
1	16.33	4087	1	16.33	6570	1	16.33	7862
2	35	4087	2	35	6570	2	35	7862
3	39.42	959	3	39.42	2199	3	39.42	2648
4	42.25	959	4	42.25	2199	4	42.25	2648



TYPICAL FRAME SUPPORT PIERS

PIER LEGEND	
□	SUPPORT UNDER MATING OPENING
■	SUPPORT AT MATING COLUMN
⊗	SUPPORT UNDER MATING WALL
▣	PIER PORCH/ACCESSED ENTRY
□	PIER MAIN BEAM
□	PIER PERIMETER
●	TE-DOWN SUPPORT (CITY PER. TR. N. SEE DETAIL D-6 IN ISLAND PICS.)

SERVICE DROP LEGEND	
E	ELECTRICAL DROP
W	WATER INLET
D	DHW PLUMBING DROP
G	GAS INLET

- GENERAL NOTES:
- PIER LOADS SHOWN ARE TO BE USED TO SIZE THE FOOTINGS BELOW THE MARRIAGEWALL FOR COLUMN SUPPORT PIERS. REFER TO TABLES 6b AND 6c IN THE INSTALLATION MANUAL FOR LOAD ON FRAME PIER FOOTINGS FOR HOMES THAT DO NOT REQUIRE PERIMETER BLOCKING. REFER TO TABLES 7b AND 7c IN THE INSTALLATION MANUAL FOR LOAD ON FRAME PIER FOOTINGS THAT REQUIRE PERIMETER BLOCKING. REFER TO TABLES 10 AND 10g TO DETERMINE FOOTING SIZE FOR ALL PIERS.
 - REFER TO TABLE 9 FOR PIER CONFIGURATION AND MAXIMUM ALLOWABLE HEIGHTS. CROSS REFERENCE THE PIER HEIGHT WITH THE MAXIMUM ALLOWABLE FLOOR HEIGHT LISTED IN THE FRAME REDOWN CHARTS (TABLE 18, 19, AND 20).
 - FRAME WIDTH SHOWN IS FOR STANDARD PRODUCT ONLY. CONTACT THE MFG PLANT FOR SPECIFICATIONS OF OPTIONS ORDERED.
 - SERVICE DROP LOCATIONS IDENTIFIED ARE APPROXIMATE.
 - THE MAXIMUM SPACING FOR FRAME SUPPORT PIERS FOR 8" I-BEAMS IS 8 FEET, 10" & 12" I-BEAMS ARE 10 FEET.

1474 SQ.FT. (STD PLAN "CONDITIONED")
SQ.FT. (W/OPT. PORCH/RECESS "CONDITIONED")

CMH	Model # SUT29563E	Quantity 1
MAX. FACTORY	Manufacturer	30" x 15"
Product Group: 30"	Base Unit	30" x 15"

PIER LOADS

28 x 56 Solution