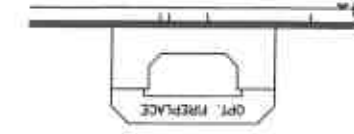
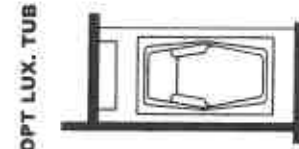


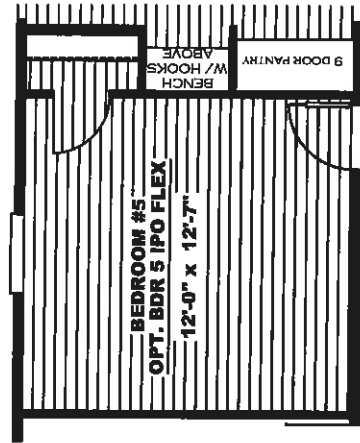
OPT MASTER BATH



OPT. FIREPLACE

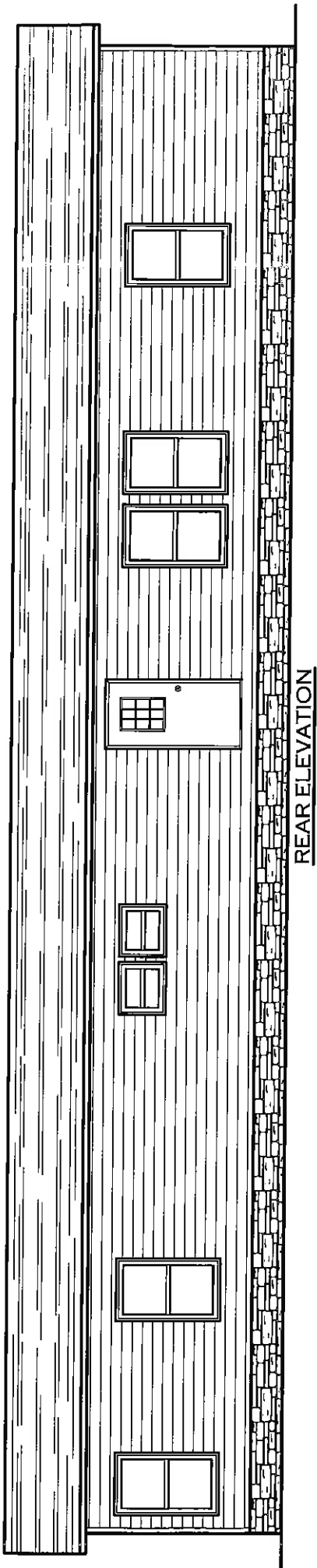


OPT LUX. TUB

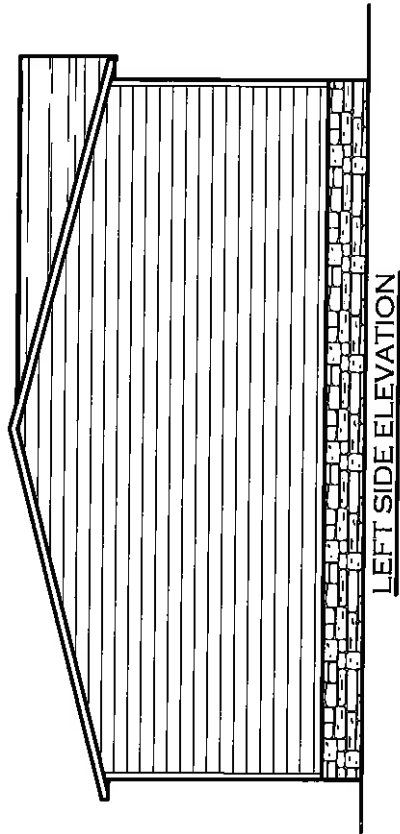


OPT. BDR #5 IPO FLEX  
12'-0" x 12'-7"

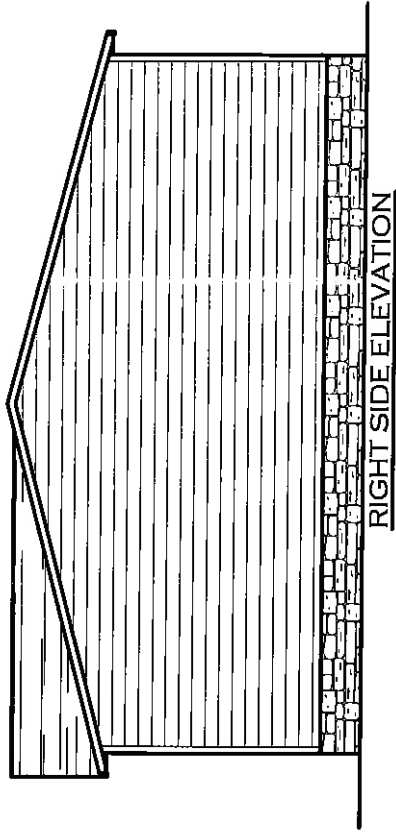
1,896 SQ.FT.  
MODEL# SLC28724B  
SOLUTION  
DRAWING# 38M157



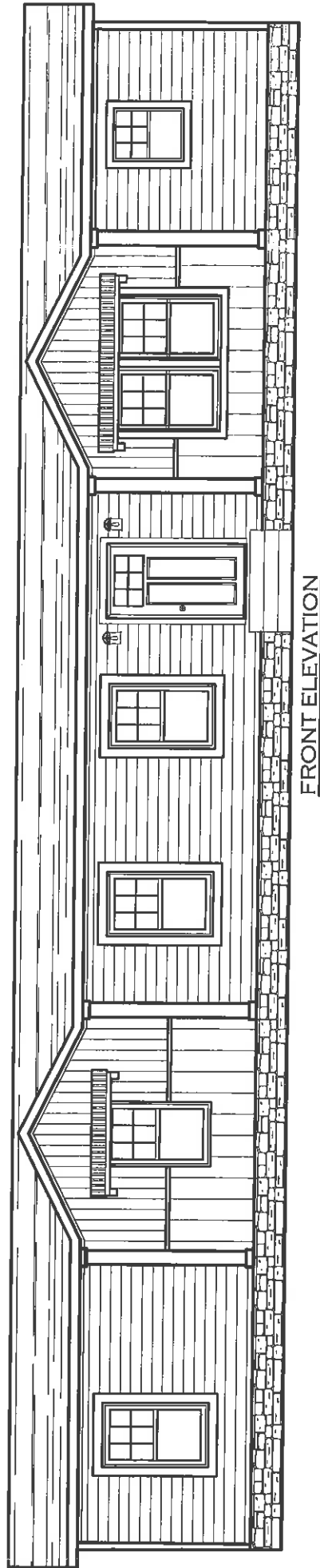
REAR ELEVATION



LEFT SIDE ELEVATION



RIGHT SIDE ELEVATION



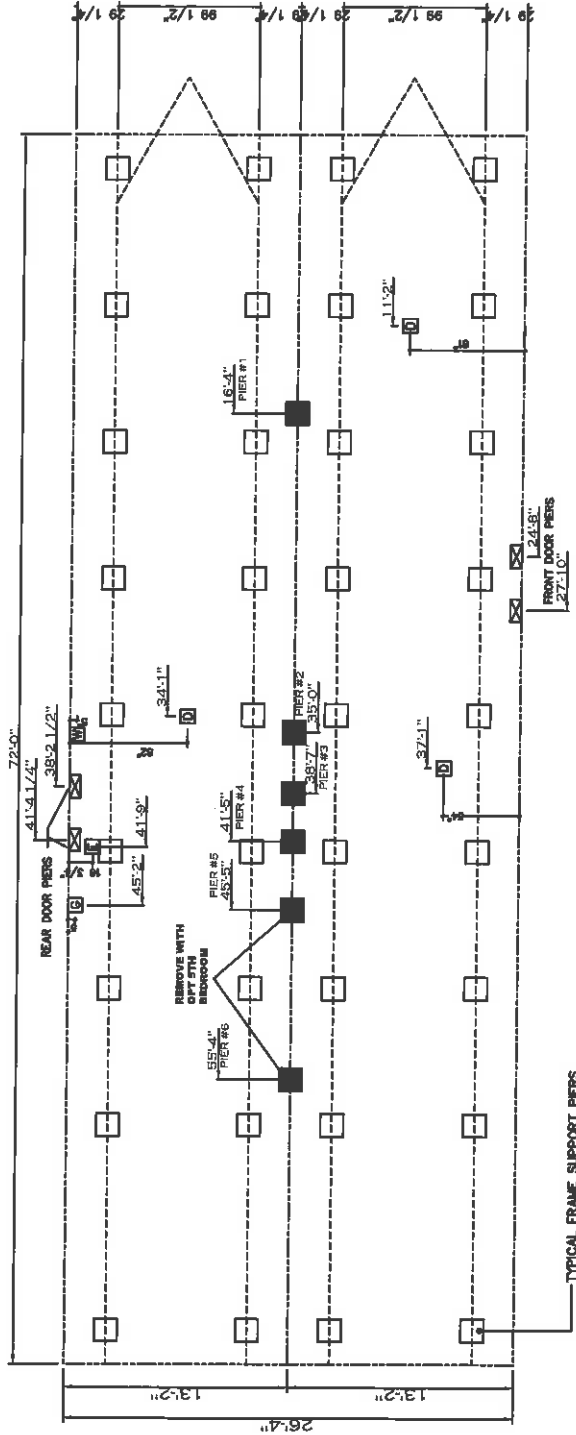
FRONT ELEVATION

1998 SUFF. (STD PLAN ROOMS) (CMH) SUFF. (S/PT. PORCH/ACCESS) (COMMON)			
CMH MANUFACTURING	No. # 1 SIC 26224B	Plant # 3841157	Product # 20 x 72 Solution
ELEVATION			

20 lb ROOF LOAD		SIDEWALL OPENING (FT)	
28' BOX WIDTH		REQUIRED PER LOAD (LBS)	
3	4	5	6
1175	1330	1485	1640
1950	2260		

FOR 30 lb & 40 lb ROOF LOAD REFER TO TABLES 7b & 7c IN THE INSTALLATION MANUAL

20 psf Roof Live Load			30 psf Roof Live Load			40 psf Roof Live Load		
Column Pier #	Distance from Hitch	Pier Load (lbs)	Column Pier #	Distance from Hitch	Pier Load (lbs)	Column Pier #	Distance from Hitch	Pier Load (lbs)
1	16.33	4087	1	16.33	6370	1	16.33	7862
2	35	4087	2	35	6370	2	35	7862
3	38.58	961	3	38.58	2201	3	38.58	2652
4	41.42	961	4	41.42	2201	4	41.42	2652
5	45.42	2357	5	45.42	4063	5	45.42	4979
6	55.33	2357	6	55.33	4063	6	55.33	4979



- GENERAL NOTES:
- PIER LOADS SHOWN ARE TO BE USED TO SIZE THE FOOTINGS BELOW THE MARRIAGEWALL FOR COLUMN SUPPORT PIERS. REFER TO TABLES 6b AND 6c IN THE INSTALLATION MANUAL FOR LOAD ON FRAME PIER FOOTINGS FOR HOMES THAT DO NOT REQUIRE PERIMETER BLOCKING. REFER TO TABLES 7b AND 7c IN THE INSTALLATION MANUAL FOR LOAD ON FRAME PIER FOOTINGS THAT REQUIRE PERIMETER BLOCKING. REFER TO TABLES 10 AND 10a TO DETERMINE FOOTING SIZE FOR ALL PIERS.
  - REFER TO TABLE 9 FOR PIER CONFIGURATION AND MAXIMUM ALLOWABLE HEIGHTS. CROSS REFERENCE THE PIER HEIGHT WITH THE MAXIMUM ALLOWABLE FLOOR HEIGHT LISTED IN THE FRAME TIEDOWN CHARTS (TABLE 18, 19, AND 20).
  - FLOOR WIDTH SHOWN IS FOR STANDARD PRODUCT ONLY. CONTACT THE MFG PLANT FOR SPECIFICATIONS OF OPTIONS ORDERED.
  - SERVICE DROP LOCATIONS IDENTIFIED ARE APPROXIMATE.
  - THE MAXIMUM SPACING FOR FRAME SUPPORT PIERS FOR 8" I-BEAMS IS 8 FEET, 10" & 12" I-BEAMS ARE 10 FEET.

PIER LEGEND	
□	SUPPORT UNDER MAINS OPENING
■	SUPPORT AT MAINS COLUMN
▣	SUPPORT UNDER MAINS WALL
▤	PIER PERIMETER/RECESS ENTRY
▥	PIER MAIN BEAM
▦	PIER FENCIBLE
▧	BE-4000 SUPPORT (BY PER. TEL. & SEE DETAIL D-8 IN FOUND. M.C.)

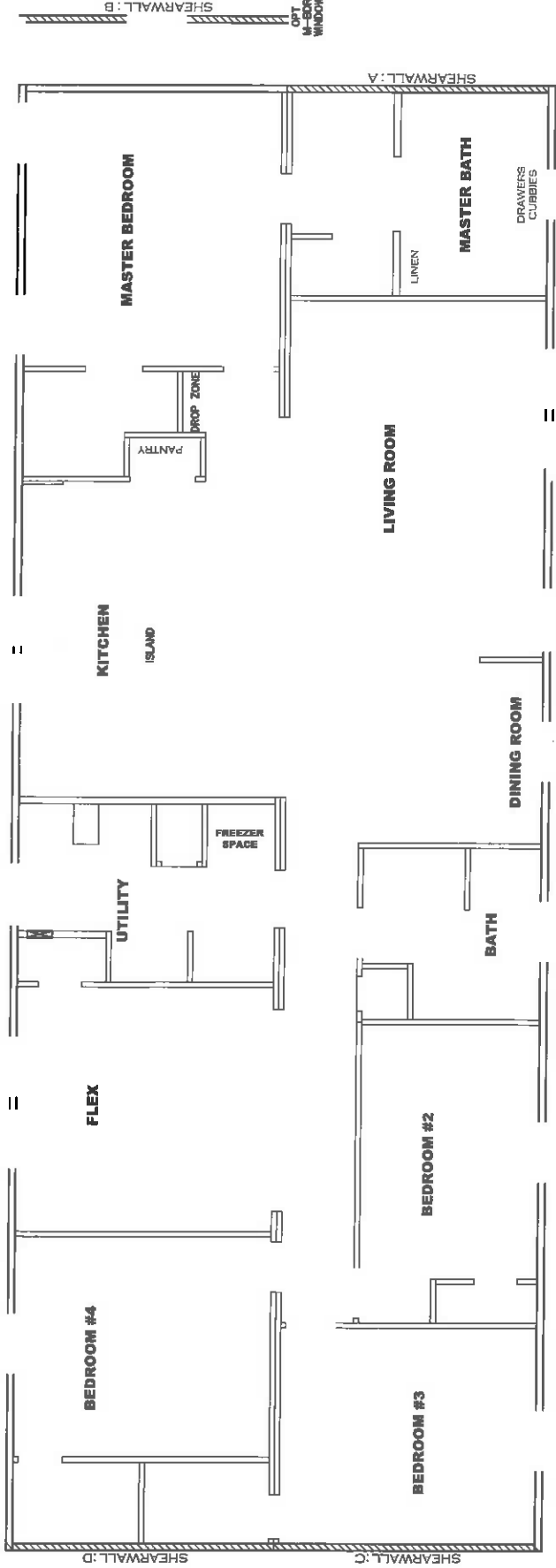
SERVICE DROP LEGEND	
E	ELECTRICAL DROP
W	WATER INLET
D	DRY PLUMBING DROP
G	GAS INLET

1896 SQ.FT. (STD PLAN "CONDITIONED")  
 SQ.FT. (W/OPT. PORCH/RECESS "CONDITIONED")

CMH  
 MANUFACTURING

Project # 51C23724B  
 Date 11/15/15  
 Page 11 of 15  
 28' x 72' SOLUTION

PIER LOADS



**Model # 38M157**  
 Box Width = 158" Double wide  
 Box Length = 72 ft. 98.5" 12" MIN. IBEAM  
 No Skylights  
 No Porches  
 Joist Size = #2 sfl 2x6 Legs 8Mx3"

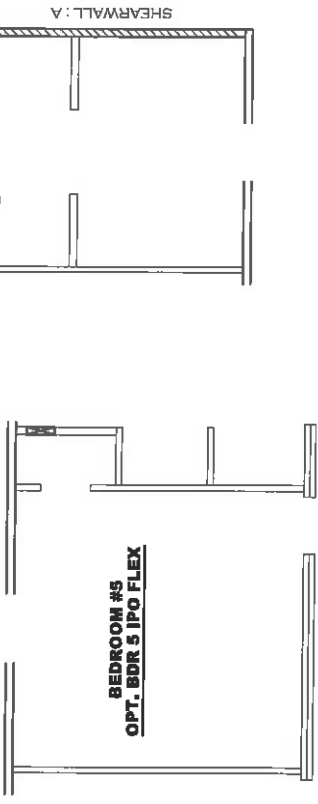
Minimum Joist Spacing 16"  
 No Offset Box  
 No Clearestory  
 No Origami Dormer  
 No Sunken Floor  
 No Parapet Roof

Designed by: JDC  
 1/31/19

**APPROVED**  
**TWO**  
 FEB 4 2019  
 FP-28-5182  
**APPROVED**  
 Federal Manufactured Home Construction And Safety Standards

**Version R13.19**

Wind Zone	Standard Roof	Diaphragm Construction	Shearwall Dict./ Hitch	Length	PLF	# of Joists	Legs	Notes
Wind Zone 1 Standard Roof	(3/8" sheeting only with 15 gax 1.5" at 8'710" oc. (197 pft) Chords: 2x4 SPF Stud Top Plate & 1x4 SPF Rail. Each spliced w/2x4 MCP	Full	Full	425	2	4/4	96 inch sidewall	
				425	2	4/4		
				425	2	4/4		
Wind Zone 2 Standard Roof	(3/8" & ceiling with 15 gax 1.5" at 8'710" oc. (267 pft) Chords: 2x4 SPF #3 Top Plate & 2x4 Rail. Each spliced w/ 12" plus block	Full	Full	425	2	4/4	96 inch sidewall	
				425	2	4/4		
				425	2	4/4		
				425	2	4/4		
Wind Zone 3 Standard Roof	(3/8" & ceiling with 15 gax 1.5" at 8'710" oc. (267 pft) Chords: 2x4 SPF #3 Top Plate & 2x4 Rail. Each spliced w/ 3x6 20 ga MCP	Full	Full	425	2	4/4	96 inch sidewall	
				425	2	4/4		
				425	2	4/4		
				425	2	4/4		

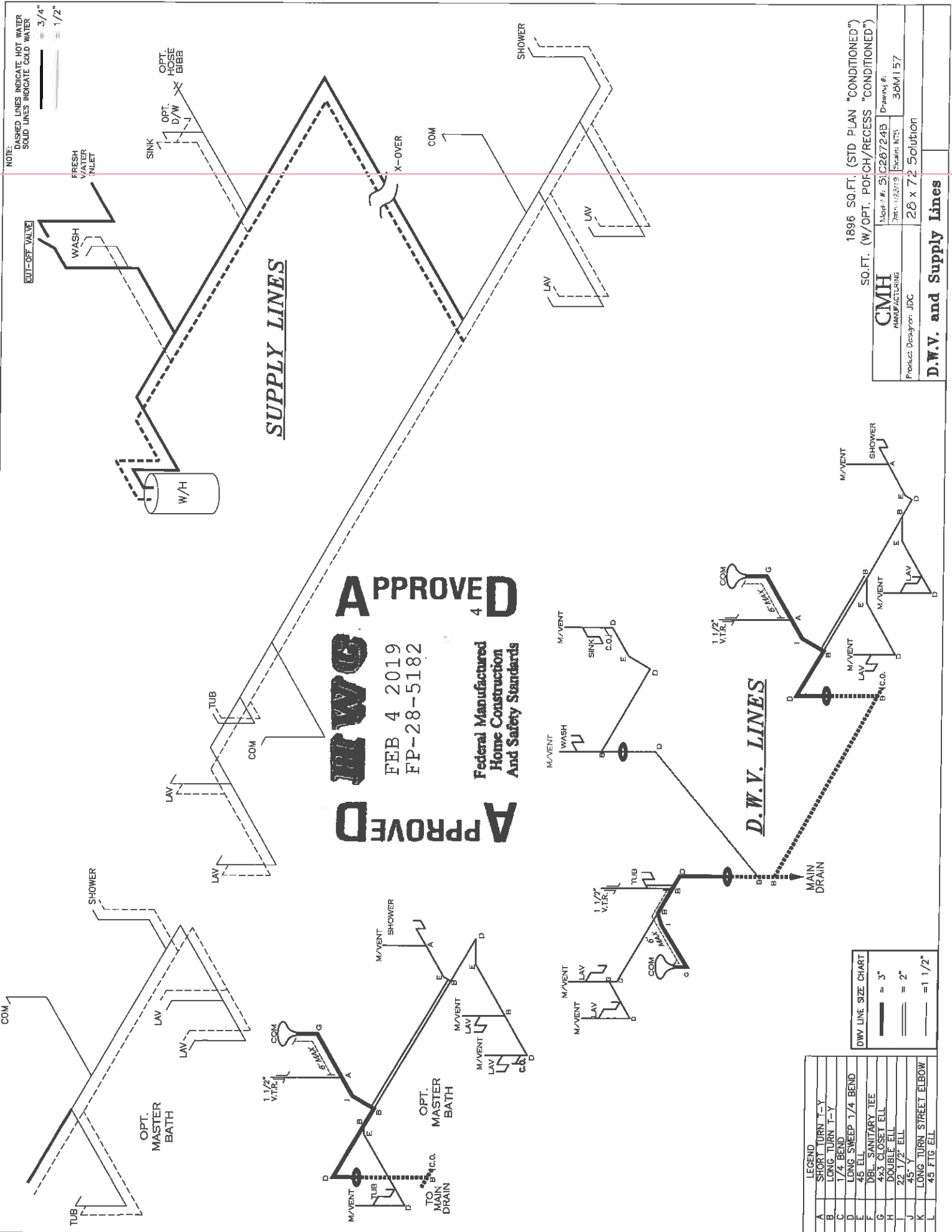


1896 SQ.FT. (STD PLAN "CONDITIONED")  
 SQ.FT. (W/OPT. PORCH/RECESS "CONDITIONED")  
 Mod # #: 51C26724B  
 Date: 1/23/19  
 Scale: HTS  
 Drawing #: 38M157  
 Product Designer: JDC  
**28 x 72 Solution**

**CMH**  
 MANUFACTURING  
**SHEARWALL**

NOTE: DASHED LINES INDICATE HOT WATER  
SOLID LINES INDICATE COLD WATER

— = 3/4"  
— = 1/2"



**SUPPLY LINES**

**D.W.V. LINES**

**APPROVED**

**MEWG**

FEB 4 2019

FP-28-5182

**APPROVED**

4

Federal Manufactured Home Construction And Safety Standards

LEGEND

A	SHORT TURN T-Y
B	LONG TURN T-Y
C	1/4 BEND
D	LONG SWEEP 1/4 BEND
E	45 ELL
F	DBL. SANITARY TEE
G	4x3 CLOSET ELL
H	DOUBLE ELL
J	22 1/2° ELL
K	45° Y
L	LONG TURN STREET ELBOW

DWV LINE SIZE CHART

—	= 3"
—	= 2"
—	= 1 1/2"

1896 SQ.FT. (STD PLAN "CONDITIONED")

SQ.FT. (W/OPT. PO/CH/RECESS "CONDITIONED")

**CMH**  
MANUFACTURING

Product Designer: JDC

Model #: 51 C28724B

Drawn #: 38M157

Date: 11/23/19

Scale: NTS

28 x 72 Solution

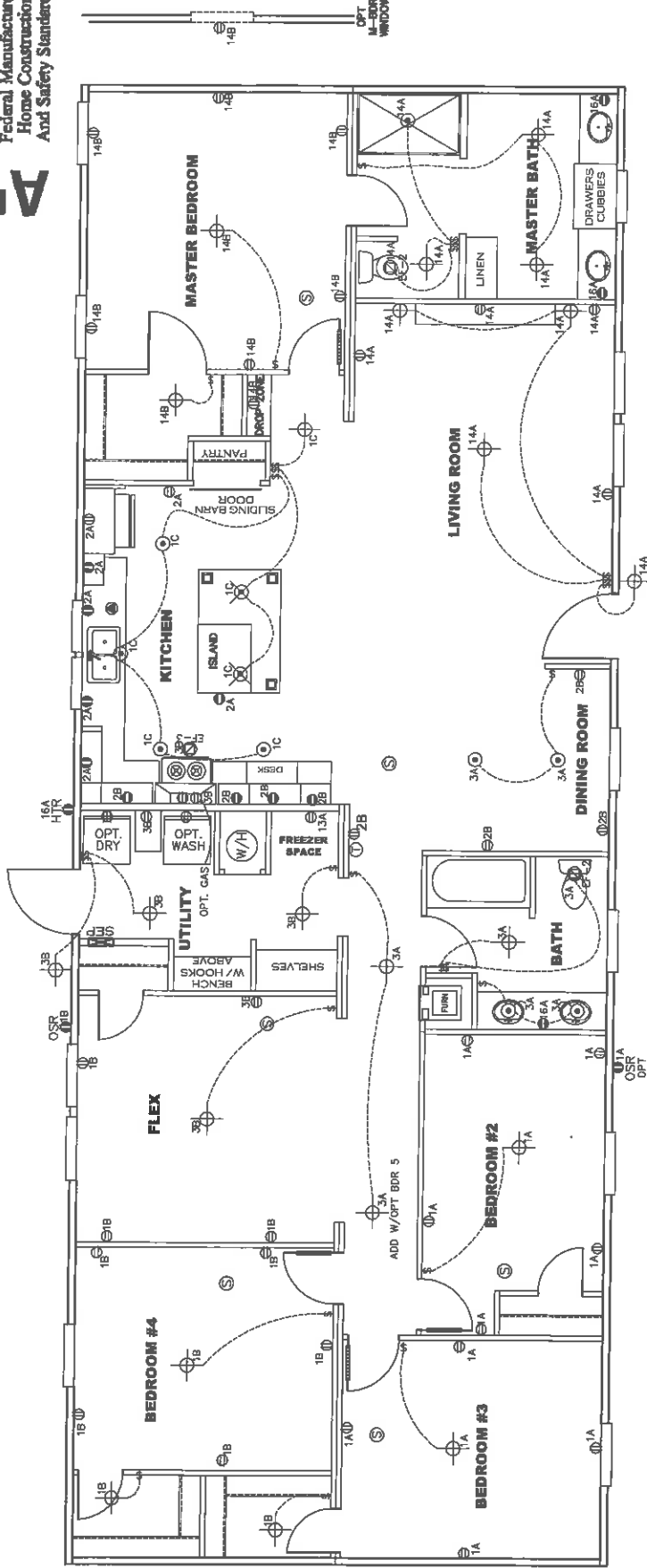
**D.W.V. and Supply Lines**

FEB 4 2019  
FP-28-5182

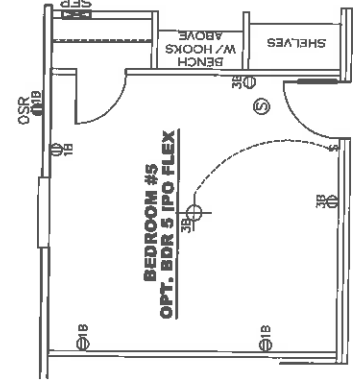
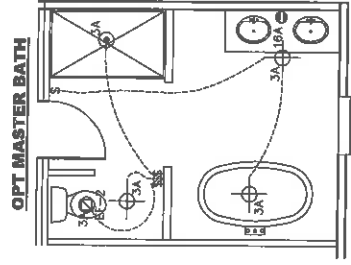
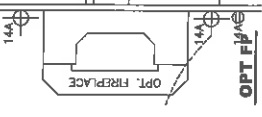
Federal Manufactured  
Home Construction  
And Safety Standards

4

CIRCUIT	CIRCUIT #	WIRE	BREAKER	CIRCUIT #	WIRE	BREAKER	CIRCUIT #	CIRCUIT #	WIRE	BREAKER
LIGHT/RECEPT	1A,1B,1C,3A,11A,14B	14-2	15-SP	4A,6B	SEE NOTE #8	SEE NOTE #8	BATHROOM	16A	12-2	20-SP
KITCHEN/DINING	2A,2B	12-2	20-SP	5B,7A	SEE NOTE #8	SEE NOTE #8	OPT G/DRIP	9B	SEE NOTE #8	SEE NOTE #8
WASHER	12A	12-2	20-SP	5A,8A,B,10A,B	SEE NOTE #8	SEE NOTE #8	OPT SP/AC	11A,B	SEE NOTE #8	SEE NOTE #8
DRYER	5A,7B	SEE NOTE #8	SEE NOTE #8	9A	SEE NOTE #8	SEE NOTE #8	FREEZER	13A	SEE NOTE #8	SEE NOTE #8
				4B	SEE NOTE #8	SEE NOTE #8				



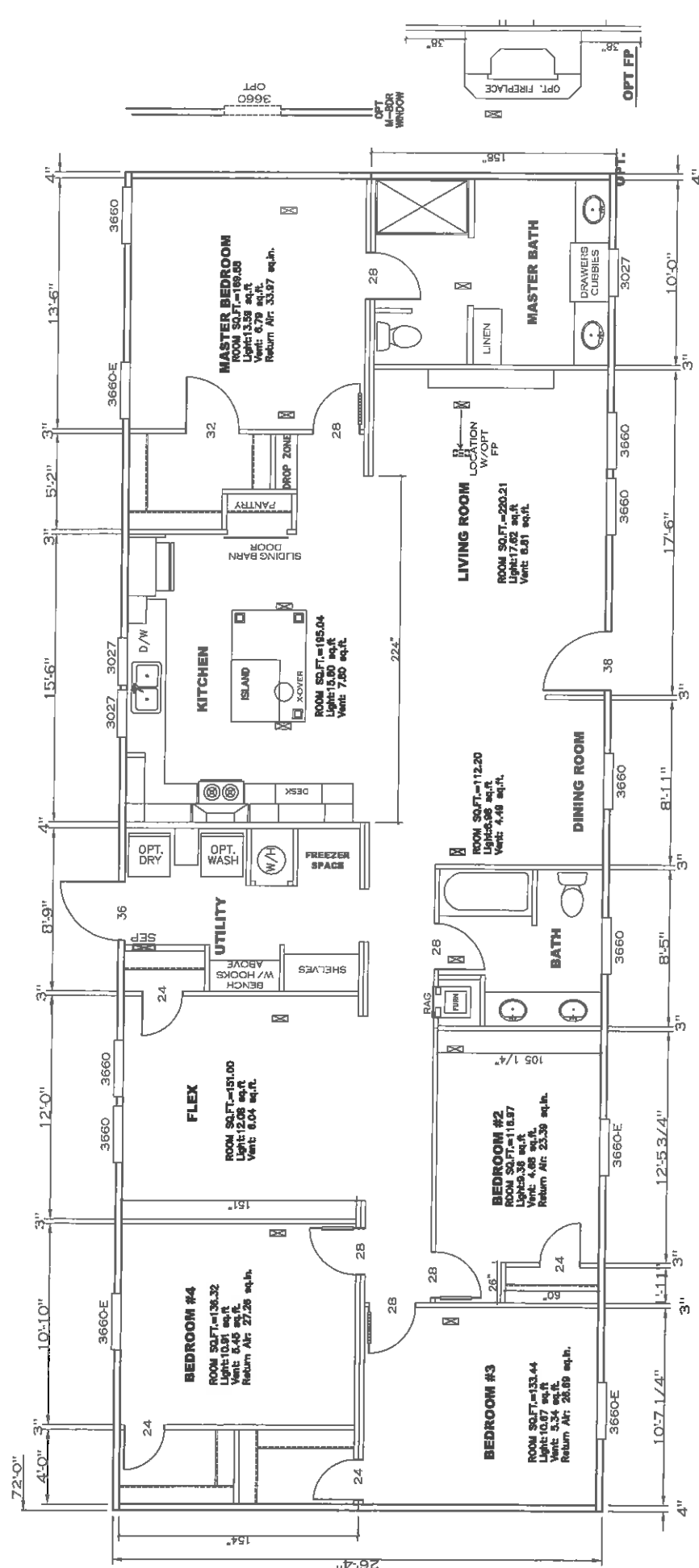
**OPT.**



- NOTES:**
- ALL CIRCUITS SHOWN ARE FOR REFERENCE AND MAY BE CHANGED BASED ON OPTIONAL COMPONENTS INSTALLED IN THE HOME.
  - REFER TO EL SECTION OF THE DAPA FOR SYMBOL CHART.
  - EITHER LIGHT OR RECEPTACLE MUST CONNECT TO SWITCH.
  - EF-1= 50 CFM EXHAUST FAN REQUIRED FOR THERMAL ZONE III OPENABLE GLASS.
  - EF-2= 50 CFM EXHAUST FAN REQUIRED THERMAL ZONE II, AND III
  - EF-3= 100 CFM RANGE EXHAUST FAN, SWITCH AT HOOD.
  - EF-4= WHOLE HOUSE VENTILATION PER REQUIREMENTS IN S-HV-10 & 10A OR M-HV-11 & 11A OF DAPA.
  - REFER TO EL SECTION OF THE DAPA OR THE MFG. INSTALLATION INSTRUCTIONS FOR PROPER WIRE SIZE AND BREAKER SIZE FOR SPECIFIC APPLIANCE AND MODEL BEING INSTALLED.
  - ALL SMOKE ALARMS TO BE LOCATED ON THE CEILING.
  - DIMENSIONS SHOWN ON PRINT ARE APPROXIMATE AND TO BE USED ONLY AS A GUIDELINE.

1896 SQ.FT. (STD PLAN "CONDITIONED")  
SQ.FT. (W/OPT. PORCH/RECESS "CONDITIONED")

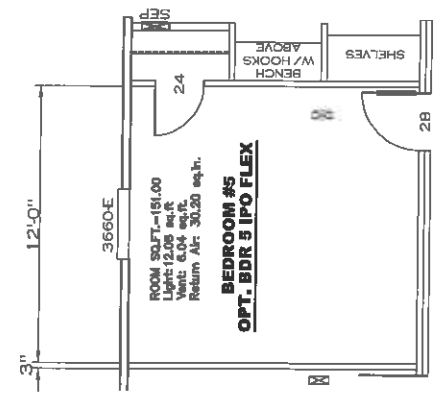
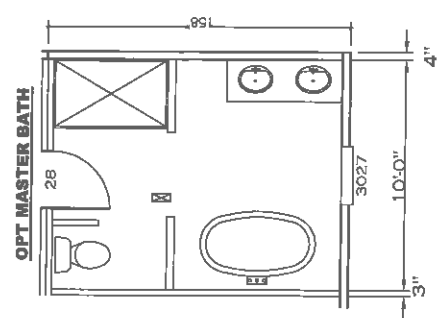
<b>CMH</b> MANUFACTURING	Model #: 5LC28724B	Drawing #:
Product Designer: JDC	Date: 1/23/19	Scale: NTS
		38M157
<b>ELECTRICAL PLAN-06</b>		



**APPROVED**  
  
**APPROVED**

FEB 4 2019  
FP-28-5182

**Federal Manufactured Home Construction And Safety Standards**



NOTE:  
BDR 3 WITHIN .35"  
OF REAR DOOR

1896 SQ.FT. (STD PLAN "CONDITIONED")  
SQ.FT. (W/OPT. PORCH/REAR "CONDITIONED")

<b>CMH</b> MANUFACTURING	Model #: SIC28724B	Drawing #:
Product Designer: JDC	Date: 02/27/19	Scale: NTS
		38M157

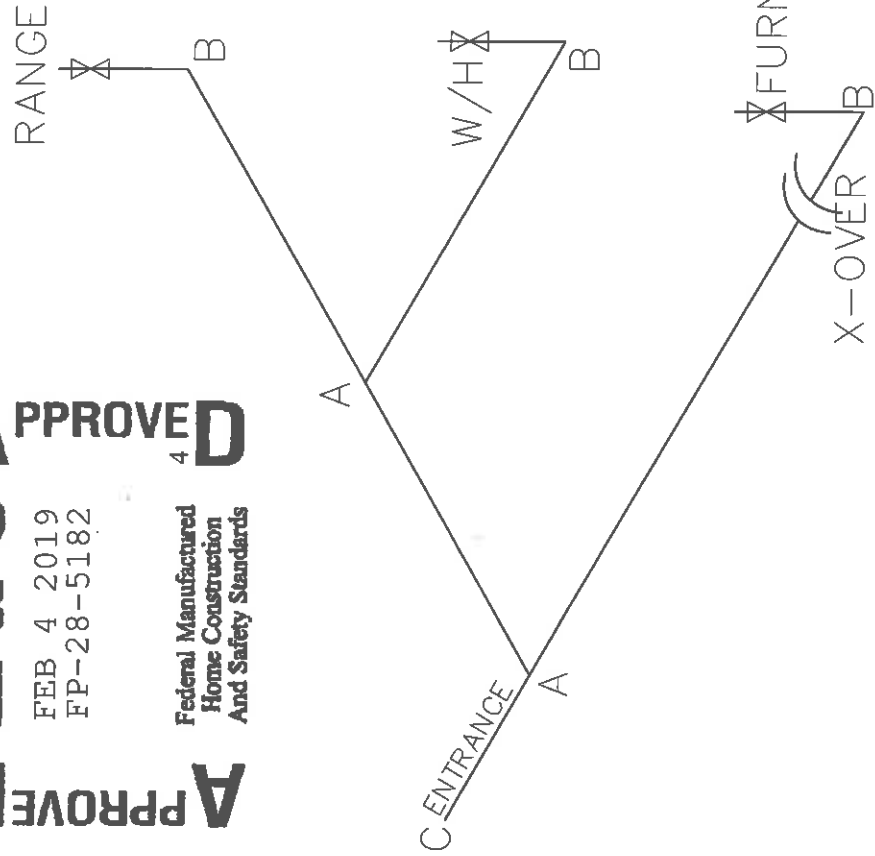
28 x 72 Solution

**FLOOR PLAN**

MDL=30'

LEGEND	APPLIANCE BTU'S	RATINGS	MAX. INPUT
SYM	FITTINGS		
A	FURNACE	77,000 BTU'S	
B	W/H	36,000 BTU'S	
X	RANGE	55,500 BTU'S	
C	DRYER	N/A	BTU'S

**APPROVED**  
**WVG**  
 FEB 4 2019  
 FP-28-5182  
**APPROVED**  
 Federal Manufactured  
 Home Construction  
 And Safety Standards



**GAS LINE SIZE CHART**

—	= 1"
—	= 3/4"

- NOTES:
- 1) ALL PIPE IS 3/4" I.D.CAST (EXCEPT WHERE NOTED OTHERWISE)
  - 2) MDL=MAX. DETERMINED LENGTH OF PIPE
  - 3) FITTING MAY BE ADDED OR SUBTRACTED TO TRAVERSE VARIATIONS IN AXLE QUANTITY, PLACEMENT, AND FRAME TYPE.
  - 4) INLET LOCATION MAY VARY TO STAY WITHIN MAX. DETERMINED LENGTH

1896 SQ.FT. (STD PLAN "CONDITIONED")  
 SQ.FT. (W/OPT. PORCH/RECESS "CONDITIONED")  
**CMH**  
 MANUFACTURING  
 Model #: 5LC28724B Drawing #:   
 Date: 1/23/19 Scale: 1/8" = 1'-0"  
 Product Designer: JDC 28 x 72 Solution

**GAS LINE DETAIL**