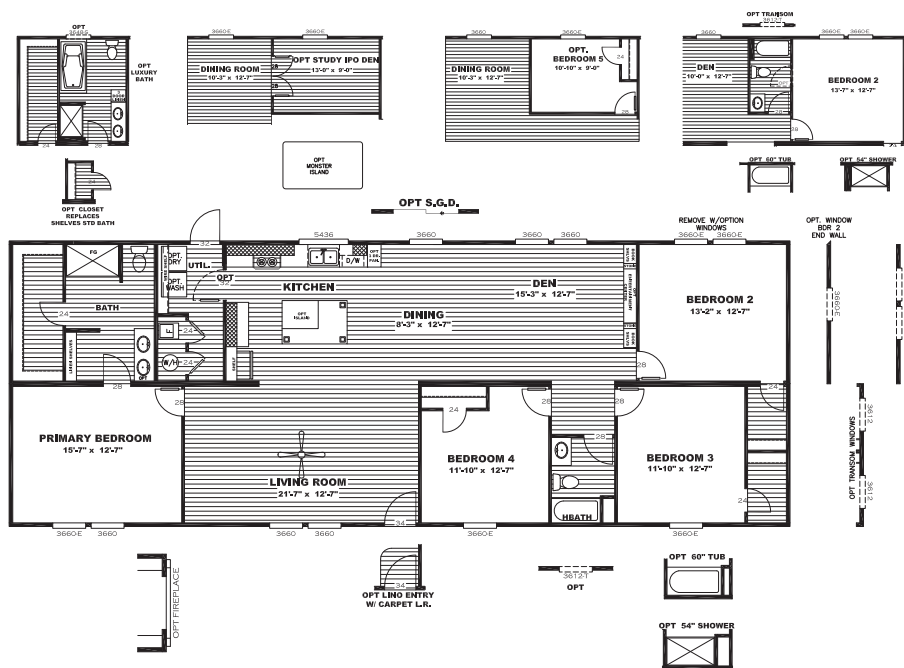


# Sulphur Springs



## The Choice

SLT28724A | 4 beds | 2 baths | 1,896 sq. ft. | 28 x 72



Sulphur Springs

2600 MAIN STREET SULPHUR SPRINGS, TX 75482 | 903.439.0242 | CLAYTONSS.COM

## Standard Features

- 8' Flat Ceilings
- Six Panel Steel Front Door
- Porch Lights – Exterior Doors
- ecobee® Smart Thermostat
- 16" O.C. Floor Joists
- Six Panel Interior Doors
- Exterior Electric Receptacle
- 42" DuraCraft® Cabinets in Kitchen
- 40 Gallon Water Heater
- Carrier® SmartComfort® Furnace
- Water Shutoffs Throughout
- Trim Around Mirrors Throughout
- Recessed LED Lighting
- 2" Mini-Blinds
- Frigidaire® Appliances
- Ceiling Fan in Living Room
- Low-E Insulated Windows
- Beau Flor Vinyl Flooring
- Vinyl Entry
- Carpet by Shaw®
- Black Dishwasher

## Available Options

- OSB Wrap
- Overhead Duct Vents
- Smart Panel
- Dormer
- Columns
- Cottage Rear Door
- Wind Zone 2 / 3 Construction
- Recessed Outriggers
- Extra Exterior Electric Receptacle
- Exterior Faucet
- Luxury Bath
- Shower Only Option
- Optional 3rd Bath
- Fiberglass Tubs / Showers
- Square China Lavs T/O
- Gas Package (No Overhead Vents w/ Gas Furnace)
- Lino Throughout
- Fireplace
- Entertainment Center
- Ceiling Fans in Bedrooms / Den
- Black SxS Refrigerator
- Black Smooth Top Range
- Black Microwave
- Black Gas Range
- Dream Kitchen
- Stainless Steel Appliances
- Farmhouse Sink
- Sliding Glass Door
- Additional Windows (Where Applicable)
- Island
- Pendant / Cage Lights over Island
- Interior Door to Utility
- Optional 5th Bedroom
- Optional Study
- Washer / Dryer
- Upgraded Insulation

Customer Name: \_\_\_\_\_

Customer Signature: \_\_\_\_\_

Phone Number: \_\_\_\_\_

County: \_\_\_\_\_

CSM: \_\_\_\_\_

**\*\*All Options Subject to Change Without Notice\*\***

The home series, floor plans, photos, renderings, specifications, features, pricing, materials and availability shown will vary by retailer and state, and are subject to change without notice.

