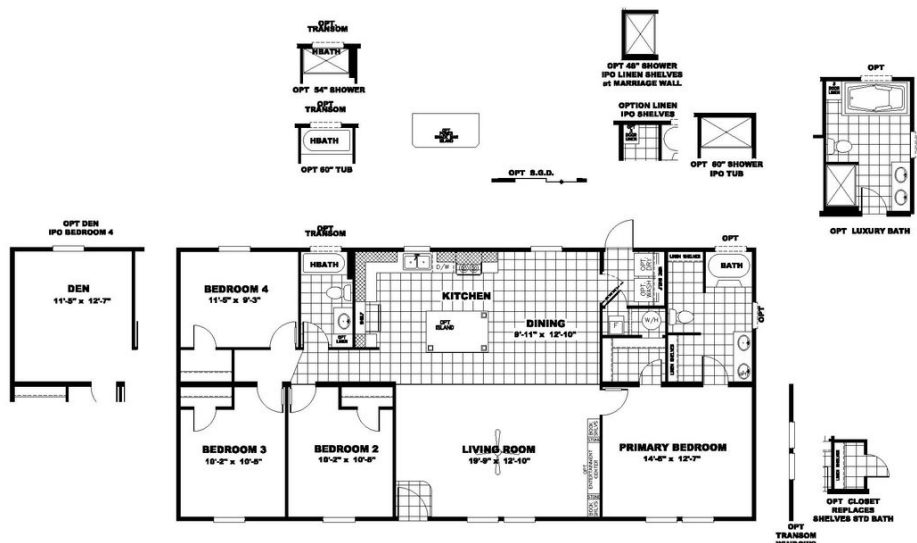


Sulphur Springs

The Crazy Eights

28x56 | 1475 Sq Ft | 4 Beds | 2 Baths | SLT28564A



Sulphur Springs

2600 MAIN STREET SULPHUR SPRINGS, TX 75482 | 903.439.0242 | CLAYTONSS.COM

Standard Features

- 8' Flat Ceilings
- Six Panel Steel Front Door
- Porch Lights – Exterior Doors
- *ecobee* Smart Thermostat
- 16" O.C. Floor Joists
- Six Panel Interior Doors
- Exterior Electric Receptacle
- 42" DuraCraft Cabinets in Kitchen
- 40 Gallon Water Heater
- Carrier SmartComfort Furnace
- Water Shutoffs Throughout
- Trim Around Mirrors Throughout
- Recessed LED Lighting
- 2" Mini-Blinds
- Frigidaire Appliances
- Ceiling Fan in Living Room
- Low E Insulated Windows
- *Beau Flor* Vinyl Flooring
- Vinyl Entry
- Carpet by Shaw
- Black Dishwasher

Available Options

- OSB Wrap
- Overhead Duct Vents
- Smart Panel
- Dormer
- Columns
- Cottage Rear Door
- Wind Zone 2 / 3 Construction
- Recessed Outriggers
- Extra Exterior Electric Receptacle
- Exterior Faucet
- Luxury Bath
- Shower Only Option
- Fiberglass Tubs / Showers
- Square China Lavs T/O
- Gas Package (No Overhead Vents w/ Gas Furnace)
- Lino Throughout
- Fireplace
- Entertainment Center
- Ceiling Fans in Bedrooms / Den
- Black SxS Refrigerator
- Black Smooth Top Range
- Black Microwave
- Black Gas Range
- Dream Kitchen
- Stainless Steel Appliances
- Farmhouse Sink
- Sliding Glass Door
- Additional Windows (Where Applicable)
- Island
- Pendant / Cage Lights over Island
- Washer / Dryer
- Interior Door to Utility
- Optional Den IPO 4th Bed
- Upgraded Insulation

Customer Name: _____

Customer Signature: _____

Phone Number: _____

County: _____

CSM: _____

****All Options Subject to Change Without Notice****

