

20 lb ROOF LOAD  
SIDEWALL OPENING PIER LOAD  
14' BOX WIDTH

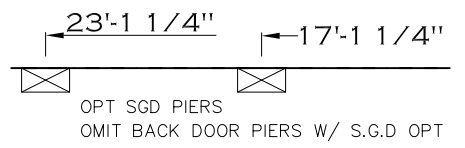
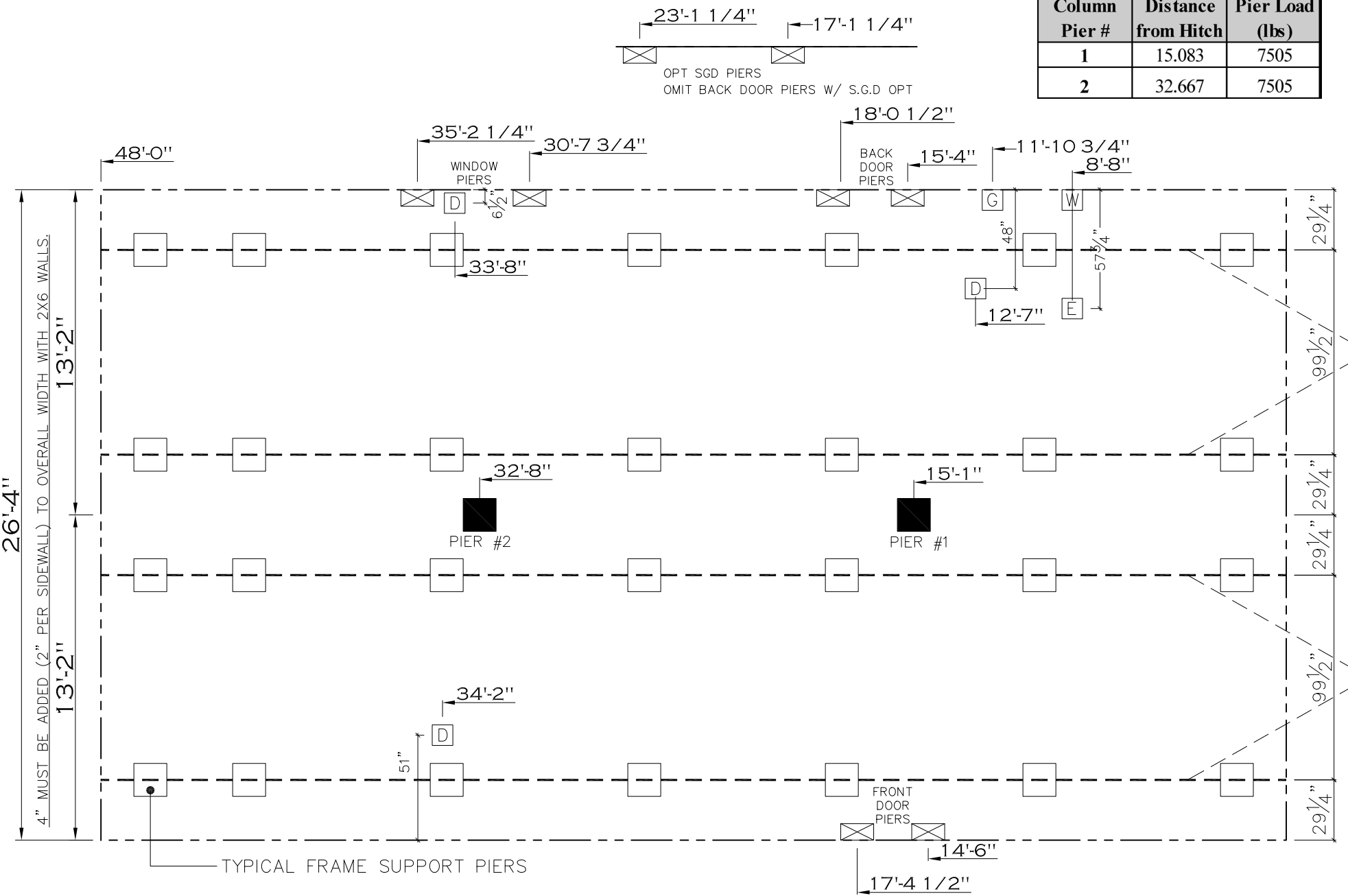
SIDEWALL OPENING (FT) REQUIRED PIER LOAD (LBS)					
3	4	5	6	8	10
1175	1330	1485	1640	1950	2260

20 psf Roof Live Load		
Column Pier #	Distance from Hitch	Pier Load (lbs)
1	15.083	3873
2	32.667	3873

30 psf Roof Live Load		
Column Pier #	Distance from Hitch	Pier Load (lbs)
1	15.083	6084
2	32.667	6084

40 psf Roof Live Load		
Column Pier #	Distance from Hitch	Pier Load (lbs)
1	15.083	7505
2	32.667	7505

\*FOR 30 lb & 40 lb ROOF LOAD REFER TO TABLES 7 & 7a IN THE INSTALLATION MANUAL.



Product Designer: BOWERS, J  
Model #: SLT28483A 28' x 48' REAL DEAL  
Date: 10/17/2023  
Drawing #: 38M149  
Scale: NTS  
Sq. Ft.: 1264

MPIER

CMH  
MANUFACTURING

REVISION REV: 8/19/2024 2:58 PM