

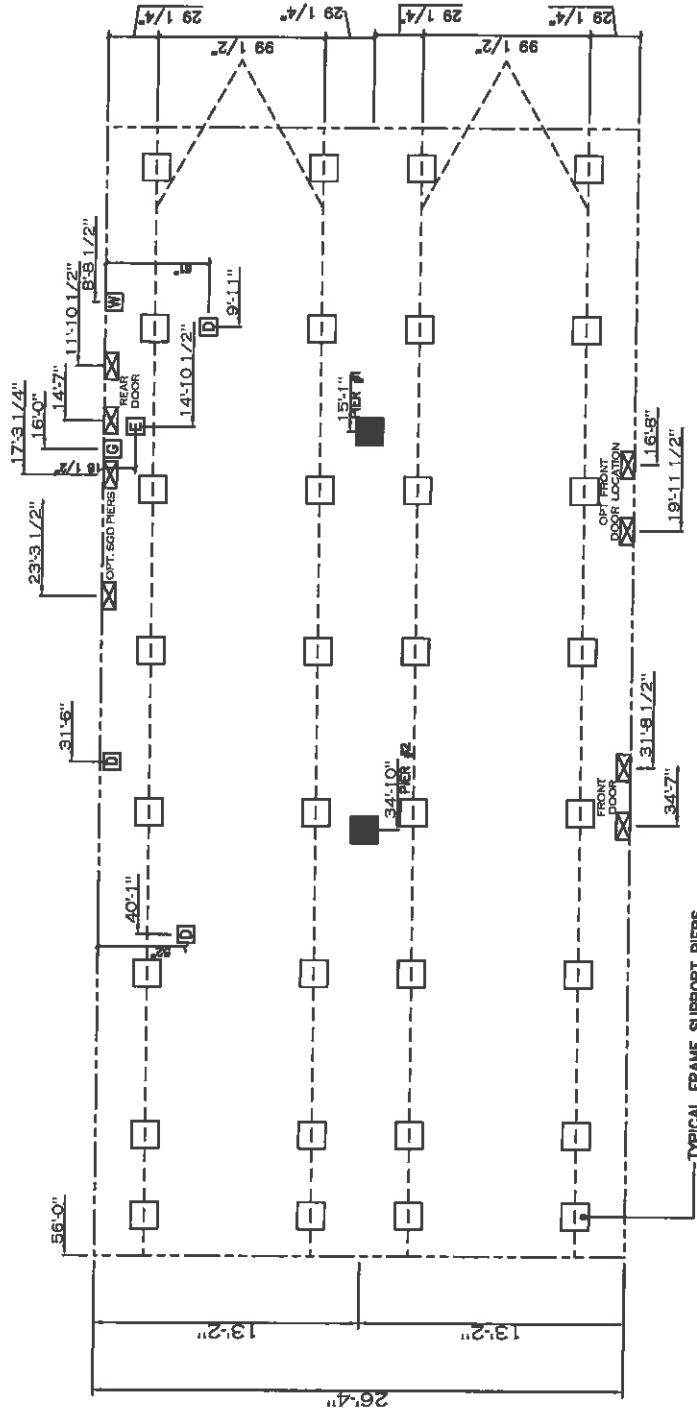
20 lb ROOF LOAD SIDEWALL OPENING PER LOAD 28' BOX WIDTH	SIDEWALL OPENING (FT) REQUIRED PER LOAD (LBS)					
	3	4	5	6	8	10
	1175	1330	1485	1640	1950	2260

*FOR 30 lb & 40 lb ROOF LOAD REFER TO TABLES 7b & 7c IN THE INSTALLATION MANUAL

20 psf Roof Live Load		
Column Pier #	Distance from Hitch (lbs)	Pier Load (lbs)
1	15.083	4301
2	34.833	4301

30 psf Roof Live Load		
Column Pier #	Distance from Hitch (lbs)	Pier Load (lbs)
1	15.083	6654
2	34.833	6654

40 psf Roof Live Load		
Column Pier #	Distance from Hitch (lbs)	Pier Load (lbs)
1	15.083	8218
2	34.833	8218



PIER LEGEND	
□	SUPPORT UNDER MAJING OPENING
■	SUPPORT AT MAJING COLUMN
▨	SUPPORT UNDER MAJING WALL
▩	PER PERIMETER/RECESSED ENTRY
□	PER MAIN BEAM
■	PER PERIMETER
●	76-0000 SUPPORT (IFTY PER THE U. SEE DETAIL D-9 IN FOUND. PLAN)

- GENERAL NOTES:
- PIER LOADS SHOWN ARE TO BE USED TO SIZE THE FOOTINGS BELOW THE MARRIAGEWALL FOR COLUMN SUPPORT PIERS. REFER TO TABLES 6b AND 6c IN THE INSTALLATION MANUAL FOR LOAD ON FRAME PIER FOOTINGS FOR HOMES THAT DO NOT REQUIRE PERIMETER BLOCKING. REFER TO TABLES 7b AND 7c IN THE INSTALLATION MANUAL FOR LOAD ON FRAME PIER FOOTINGS THAT REQUIRE PERIMETER BLOCKING. REFER TO TABLES 10 AND 10g TO DETERMINE FOOTING SIZE FOR ALL PIERS.
 - REFER TO TABLE 9 FOR PIER CONFIGURATION AND MAXIMUM ALLOWABLE HEIGHTS. CROSS REFERENCE THE PIER HEIGHT WITH THE MAXIMUM ALLOWABLE FLOOR HEIGHT LISTED IN THE FRAME TIEDOWN CHARTS (TABLE 18, 19, AND 20). FLOOR WIDTH SHOWN IS FOR STANDARD PRODUCT ONLY. CONTACT THE MFG PLANT FOR SPECIFICATIONS OF OPTIONS ORDERED.
 - SERVICE DROP LOCATIONS IDENTIFIED ARE APPROXIMATE. THE MAXIMUM SPACING FOR FRAME SUPPORT PIERS FOR 8" I-BEAMS IS 8 FEET, 10" & 12" I-BEAMS ARE 10 FEET.

1475 SQ.FT. (STD PLAN "CONDITIONED")
SQ.FT. (W/OPT. PORCH/RECESS "CONDITIONED")

CMH
MANUFACTURING

Model #: SLT295-6A Drawing #: 38M1.4.2
Part#: 02/13 Scale: N/A

Product Developer: JDC 28 x 56 Solution

PIER LOADS

ANTERIOR 5/09-
1/14/16 JDC