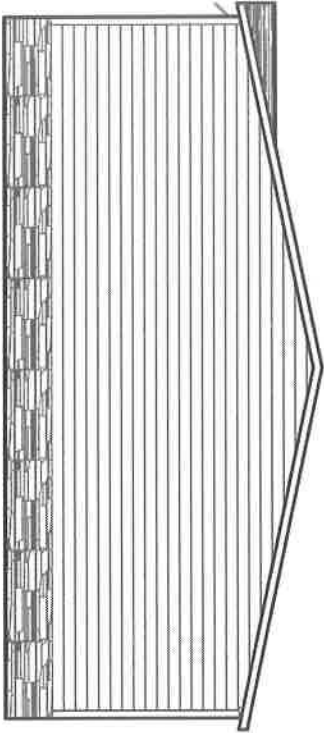
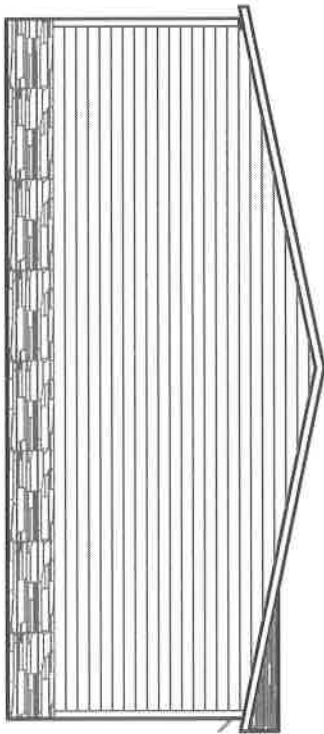


REAR ELEVATION



RIGHT SIDE ELEVATION



LEFT SIDE ELEVATION



FRONT ELEVATION

1008 SQ.FT. (STD PLAN "CONDONED")
 N/A SQ.FT. (W/OPT. PORCH/RECESS "CONDONED")

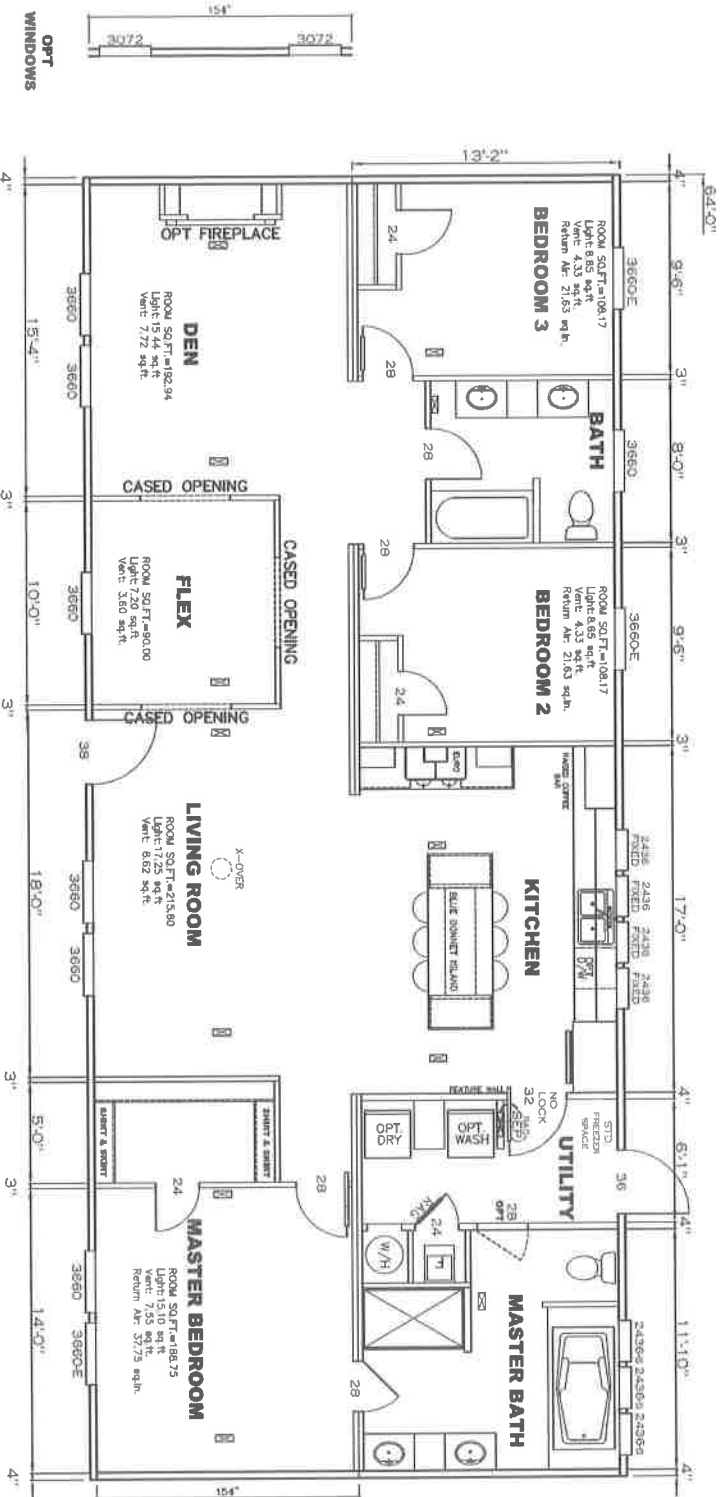
CMH
 HARD FACTURING

Model #: SL28G43A Drawing #: 38M158
 Date: 1/17/19 Scale: 1/8" = 1'-0"

Product Designer: JDC

28' x 64' BLUE BONNET BREEZE

ELEVATION



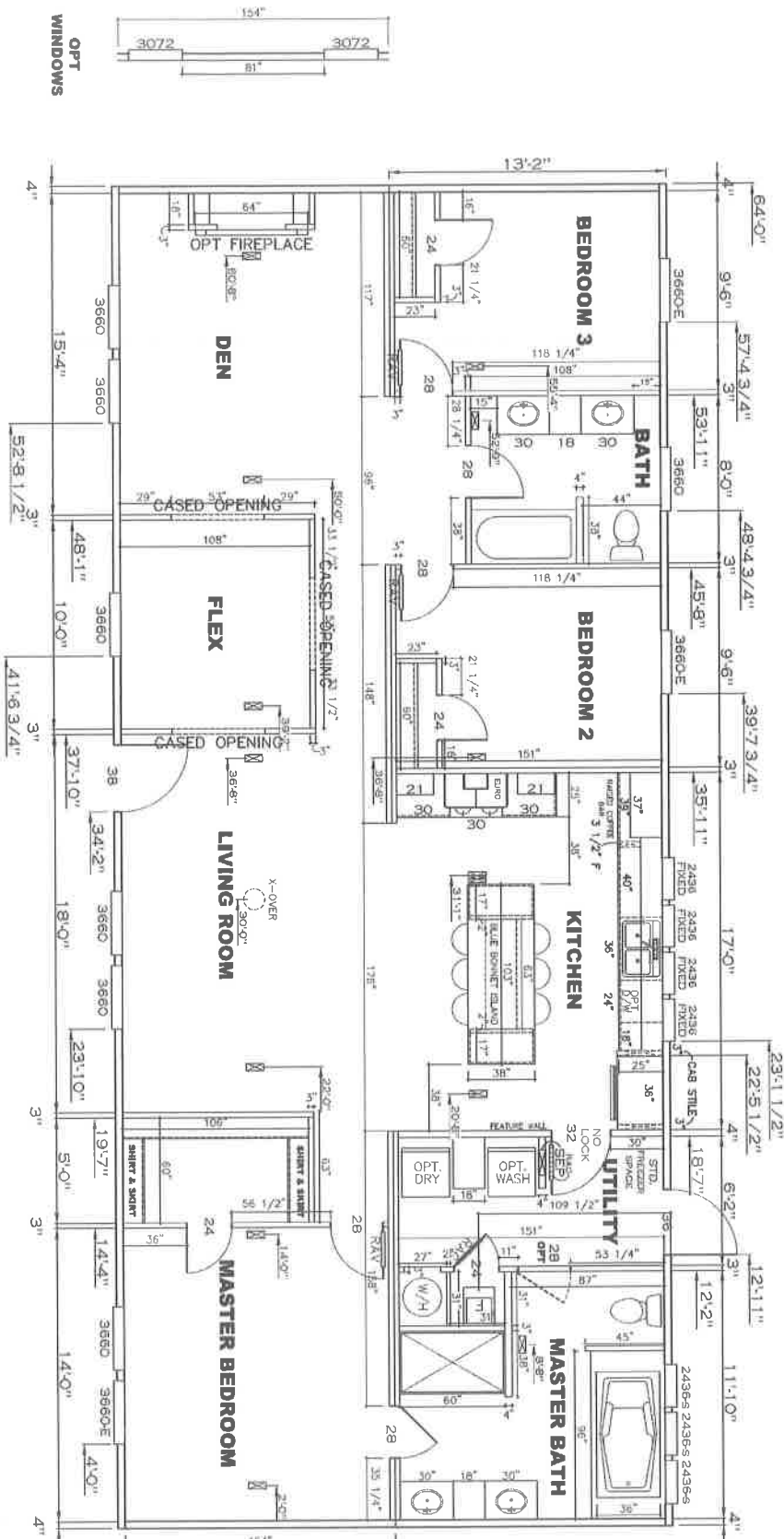
APPROVED
REVISED
 JAN 14 2020
 FP-28-5230
APPROVED

Federal Manufactured
 Home Construction
 And Safety Standards

1685 SQ.FT. (STD PLAN "CONDITIONED")
 N/A SQ.FT. (W/OPT. PORCH/RECESS "CONDITIONED")

Product Designer: JDC	Model #: S1C28G43A	Drawing #:
CMH MANUFACTURING	Date: 5/17/19	Scale: N.T.S.
	28' x 64' BLUE BONNET BREEZE	38M158

FLOOR PLAN

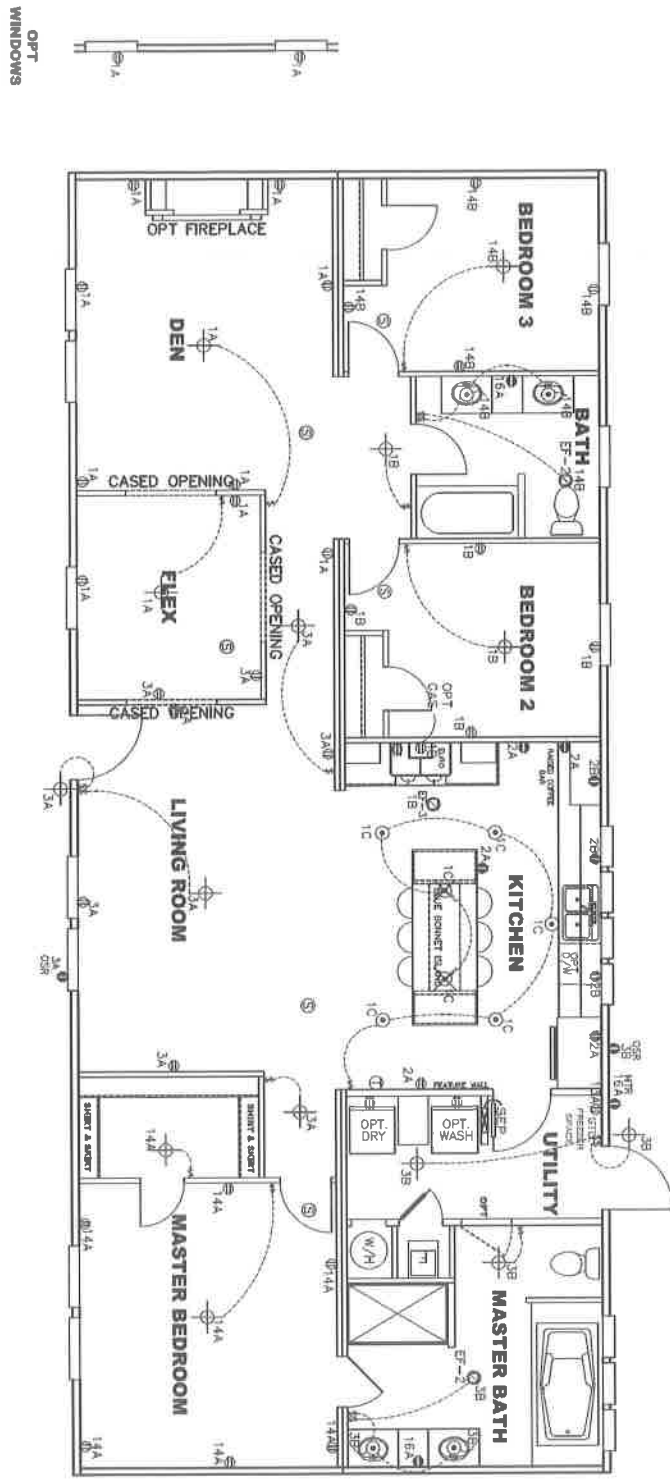


NOTE ALL FLOOR REGISTERS ARE 4X10 UNLESS OTHERWISE NOTED

1/20/20

1,685 SQ. FT. (STD. PLAN "CONDITIONED")	
N/A	50 FT. (W/OPT. PORCH/PRECESS "CONDITIONED")
CMH	300/50
Model #	20' X 64' Blue Bonnet Divider
Product Group	1/20/20
Manufacturer	CMH
Product Name	FLOOR PLAN

CIRCUIT	CIRCUIT	WIRE	BREAKER	CIRCUIT	CIRCUIT #	WIRE	BREAKER	CIRCUIT	CIRCUIT	WIRE	BREAKER
LIGHT/RECP	1A,B,3A,8,10,C	14-2	15-SP	WATER HEATER	4A,6B	SEE NOTE #8		BATHROOM	16A	12-2	20-SP
KITCHEN	2A,2B	12-2	20-SP	RANGE	5B,7A	SEE NOTE #9		OPT G/D/SP	9B	SEE NOTE #9	
WASHER	12A	12-2	20-SP	FLUENCE	6A,8A,B,10A,B	SEE NOTE #8		OPT 37A/ W/7AC	11A,B	SEE NOTE #9	
DRYER	5A,7B	SEE NOTE #8		OPT D/WASH	9A	SEE NOTE #9		FREEZER	13A	SEE NOTE #9	
				SMOKE ALARM	4B	SEE NOTE #9					



- NOTES:
- 1) ALL CIRCUITS SHOWN ARE FOR REFERENCE AND MAY BE CHANGED BASED ON OPTIONAL COMPONENTS INSTALLED IN THE HOME.
 - 2) REFER TO EL SECTION OF THE DAPIA FOR SYMBOL CHART.
 - 3) INDICATES EITHER LIGHT OR RECEPTACLE MUST CONNECT TO SWITCH.
 - 4) EF-1= 50 CFM EXHAUST FAN REQUIRED FOR THERMAL ZONE III THERMAL ZONES I & II MAY USE FAN OR WINDOW W/1.5 SQ. FT. OPENABLE GLASS.
 - 5) EF-2= 50 CFM EXHAUST FAN REQUIRED THERMAL ZONE I, II, AND III.
 - 6) EF-3= 100 CFM RANGE EXHAUST FAN, SWITCH AT HOOD.
 - 7) EF-4= WHOLE HOUSE VENTILATION PER REQUIREMENTS IN S-HV-10 & 10A OR M-HV-11 & 11A OF DAPIA.
 - 8) REFER TO EL SECTION OF THE DAPIA OR THE MFG. INSTALLATION INSTRUCTIONS FOR PROPER WIRE SIZE AND BREAKER SIZE FOR SPECIFIC APPLIANCE AND MODEL BEING INSTALLED.
 - 9) ALL SMOKE ALARMS TO BE LOCATED ON THE CEILING.
 - 10) DIMENSIONS SHOWN ON PRINT ARE APPROXIMATE AND TO BE USED ONLY AS A GUIDELINE.

APPROVED

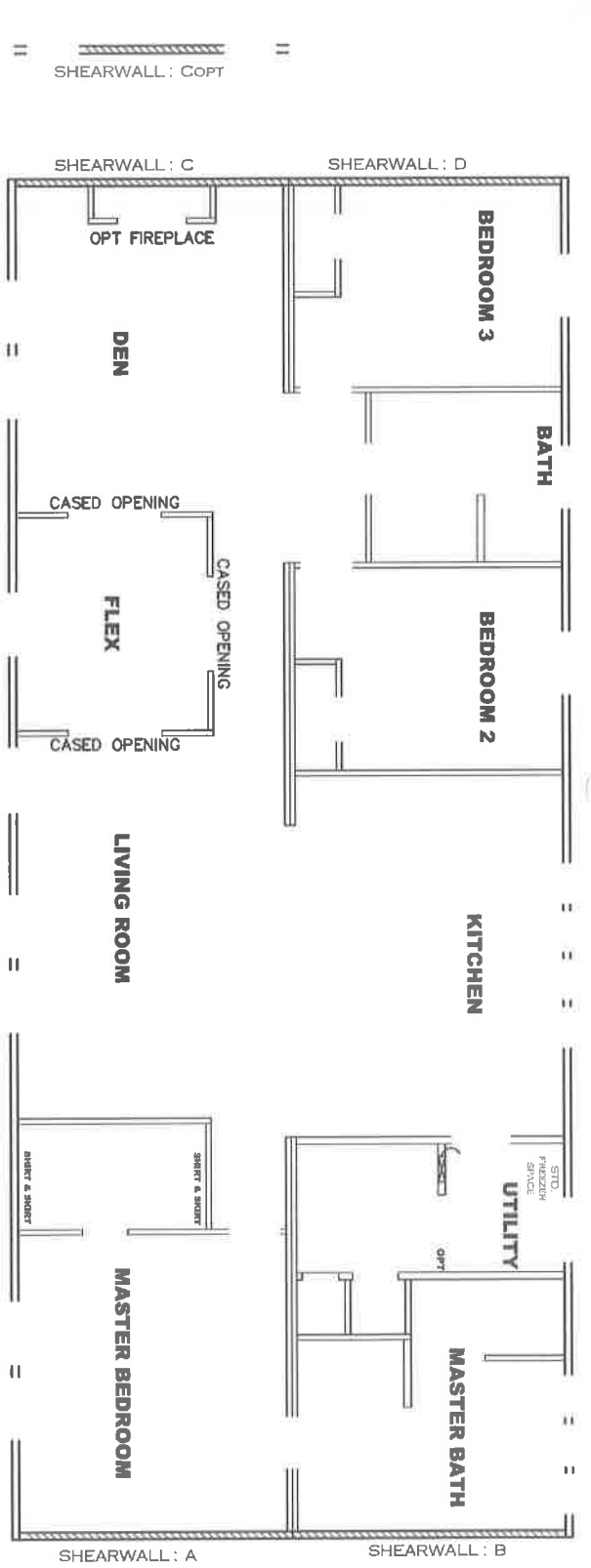
REVISED
 JAN 14 2020
 F.P-28-5230
APPROVED

Federal Manufactured
 Home Construction
 And Safety Standards

1685 SQ.FT. (STD PLAN "CONDITIONED")
 N/A SQ.FT. (W/OPT. PORCH/RECESS "CONDITIONED")

CMT
 MANUFACTURING
 Model #: S1C226643A | Drawing #: 38M115B
 Date: 5/7/19 | Scale: N.T.S. |

Product Designer: JDC
ELECTRICAL PLAN-06
 REVISION ECR-N/A
 1/13/20



OPT WINDOWS

Model # 38M158
 Box Width = 158" Double wide
 Box Length = 64 ft. 99.5" 10" MINIBEAM No Clearesty
 No Skylights No Original Dornier
 No Porches No Sunken Floor
 Joist Size = #2 spf 2x8 Lags 5/8x3" No Parapet Roof

Minimum Joist Spacing 16" Designer: JDC
 1/7/20

Version R13.18

Wind Zone	1 Standard Roof	2 Standard Roof	3 Standard Roof
Diaphragm Construction	(3x8" sheathing only with 15 gpk 1.5" at 5'110" oc (187 p/d) Choice 2x4 SPF Solid Top Plate & 1x4 SPF Fall. Each spliced w/2x4 MCP	(2x6" p/n choice 2x4 MCP & 2x6 SPF #3 Fall spliced	(2x6" p/n choice 2x4 MCP & 2x6 SPF #3 Fall spliced
Shearwall Dist / H/Chl	A 0" 144" 162" 2/1	B 0" 112" 4/3	C 64" 87" 2/2
Length	144" 162" 2/1	112" 4/3	87" 2/2
PLF	162	4/3	2/2
# of Joists	2	2	2
Lags	2/1	4/3	2/2
Notes			
Wind Zone 2 Standard Roof	(3x8" sheathing only with 15 gpk 1.5" at 5'110" oc (187 p/d) Choice 2x4 MCP & 2x6 SPF #3 Top Plate applied w/2x4 MCP & 2x6 SPF #3 Roll-sill on	(2x6" p/n choice 2x4 MCP & 2x6 SPF #3 Roll-sill on	(2x6" p/n choice 2x4 MCP & 2x6 SPF #3 Roll-sill on
Diaphragm Construction			
Shearwall Dist / H/Chl	A 0" 144" 162" 2/1	B 0" 112" 4/3	C 64" 87" 2/2
Length	144" 162" 2/1	112" 4/3	87" 2/2
PLF	162	4/3	2/2
# of Joists	2	2	2
Lags	2/1	4/3	2/2
Notes			
Wind Zone 3 Standard Roof	(3x8" sheathing only with 15 gpk 1.5" at 5'110" oc (187 p/d) Choice 2x4 MCP & 2x6 SPF #3 Top Plate applied w/2x4 MCP & 2x6 SPF #3 Roll-sill on	(2x6" p/n choice 2x4 MCP & 2x6 SPF #3 Roll-sill on	(2x6" p/n choice 2x4 MCP & 2x6 SPF #3 Roll-sill on
Diaphragm Construction			
Shearwall Dist / H/Chl	A 0" 112" 4/3	B 0" 112" 4/3	C 64" 87" 2/2
Length	112" 4/3	112" 4/3	87" 2/2
PLF	4/3	4/3	2/2
# of Joists	2	2	2
Lags	4/3	4/3	2/2
Notes			

APPROVED
REVISED
 JAN 14 2020
 FP-28-5230

APPROVED

Federal Manufactured Home Construction And Safety Standards

1695 SQ.FT. (STD PLAN "CONDITIONED")
 N/A SQ.FT. (W/OPT. PORCH/RECESS "CONDITIONED")

Product Designer: JDC

CMH MANUFACTURING Model #: S1C2B643A Drawing #: 38M158
 Date: 5/17/19 Scale: NTS

28' x 64' BLUE BONNET BREEZE

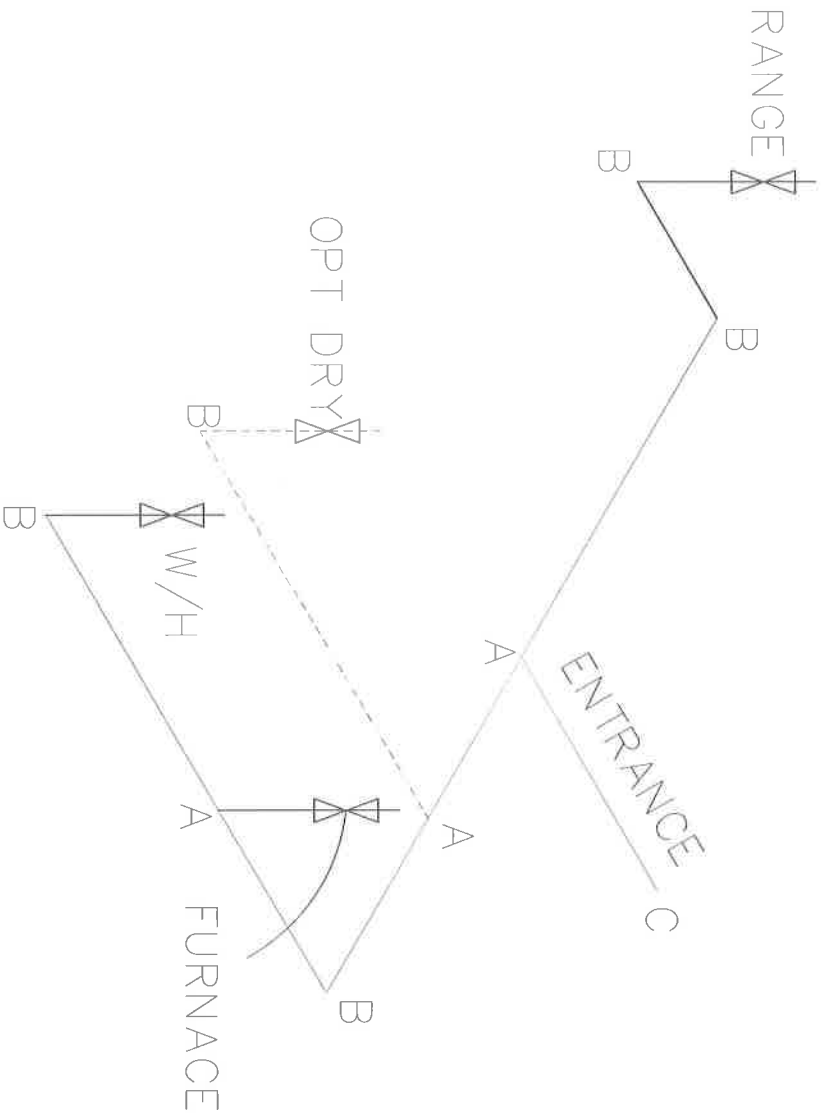
REVISION ECR-N/A 1/13/20 BF

SHEARWALL PAGE

LEGENT		APPLIANCE BTU'S RATINGS MAX. INPUT	
SYM	FITTING		
A	TEE	FURNACE	77,000 BTU'S
B	90 ELL	W/H	36,000 BTU'S
X	VALVE	RANGE	54,000 BTU'S
C	CAP	DRYER	22,000 BTU'S

APPROVED **JWG** **APPROVED**
 MAY 21 2019
 FP-28-5230
 Federal Manufactured
 Home Construction
 And Safety Standards

MDL=30'



GAS LINE SIZE CHART	
—	= 1"
- - -	= 3/4"

- NOTES:
- 1) ALL PIPE IS 3/4" I.D. CAST (EXCEPT WHERE NOTED OTHERWISE)
 - 2) MDL=MAX. DETERMINED LENGTH OF PIPE
 - 3) FITTING MAY BE ADDED OR SUBTRACTED TO TRAVERSE VARIATIONS IN AXLE QUANTITY, PLACEMENT, AND FRAME TYPE.
 - 4) INLET LOCATION MAY VARY TO STAY WITHIN MAX. DETERMINED LENGTH

1685 SQ.FT. (STD PLAN "CONDITIONED")	
N/A	SQ.FT. (W/OPT PORCH/RECESS "CONDITIONED")
CMH	MANUFACTURING
Product Designer: JDC	Model #: 51C28G43A
	Date: 5/17/19 Scale: N.T.S. 30M/1.58
GAS LINE DETAIL	

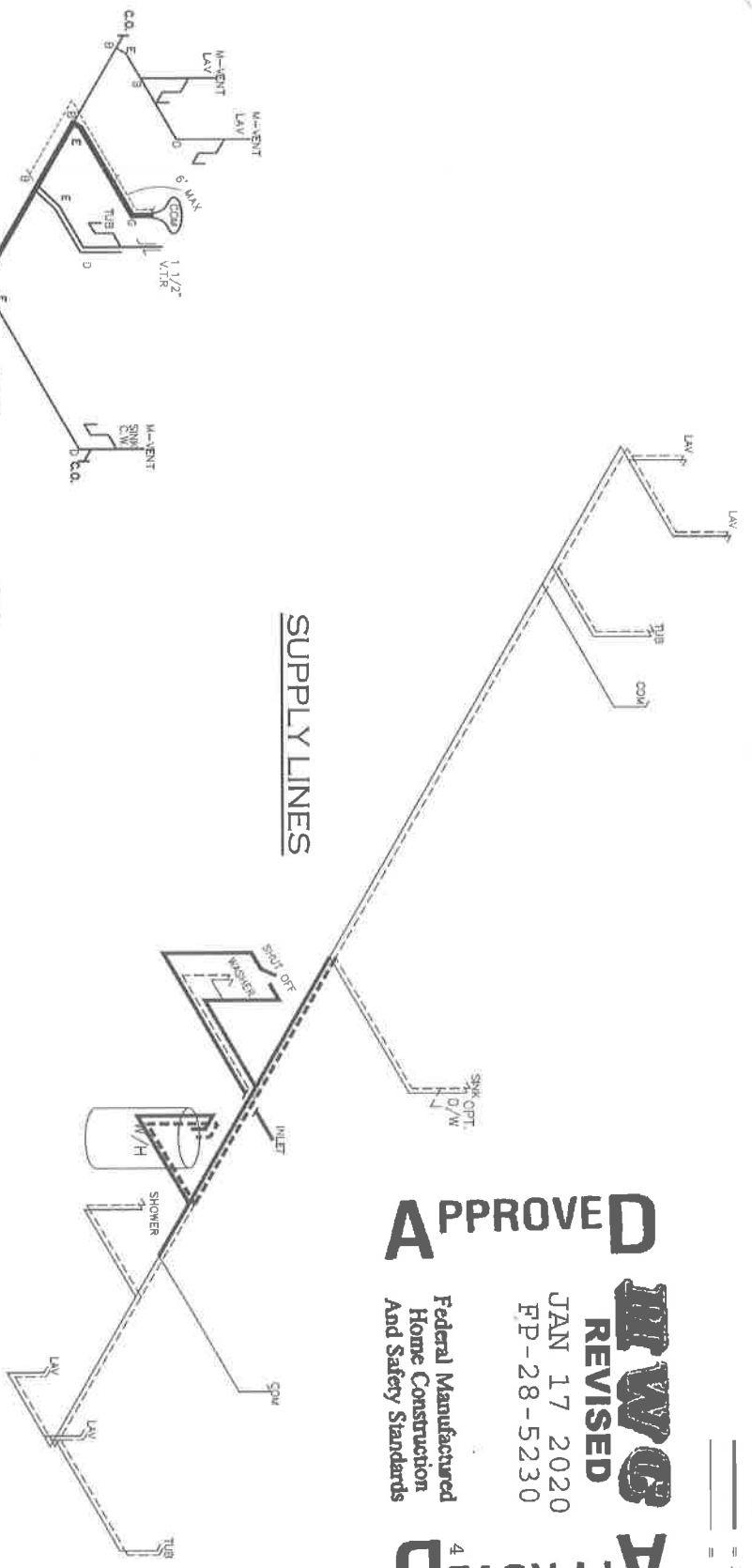
DASHED LINES INDICATE WATER
SOLID LINES INDICATE WATER

— = 3/4"
— = 1/2"

APPROVED
REVISED
JAN 17 2020
FP-28-5230

APPROVED

Federal Manufactured
Home Construction
And Safety Standards



SUPPLY LINES

DWV LINES

LEGEND

A	SHORT TURN T-Y
B	LONG TURN T-Y
C	1/4 BEND
D	LONG SWEEP 1/4 BEND
E	45 ELL
F	DRILL SANITARY TEE
G	4x3 CLOSE ELL
H	3 DOUBLE ELL
I	22 1/2° ELL
J	45° Y
K	LONG TURN STREET ELBOW
L	45 FTG ELL

DWV LINE SIZE CHART

—	3"
—	2"
—	1 1/2"

1,685 SQ.FT. (STD PLAN, "CONDITIONED")

N/A SQ.FT. (W/OPT. PORCH/RECESS "CONDITIONED")

Product Designer: JDC

MANUFACTURERS

Model #: S1C28643A

Dates: 1/7/19 Scale: N.T.S.

28' x 64' Blue Bonnet Breeze

D.W.V. and Supply Lines

3 ADJUSTOR BR-N/A
1/11/20 BP

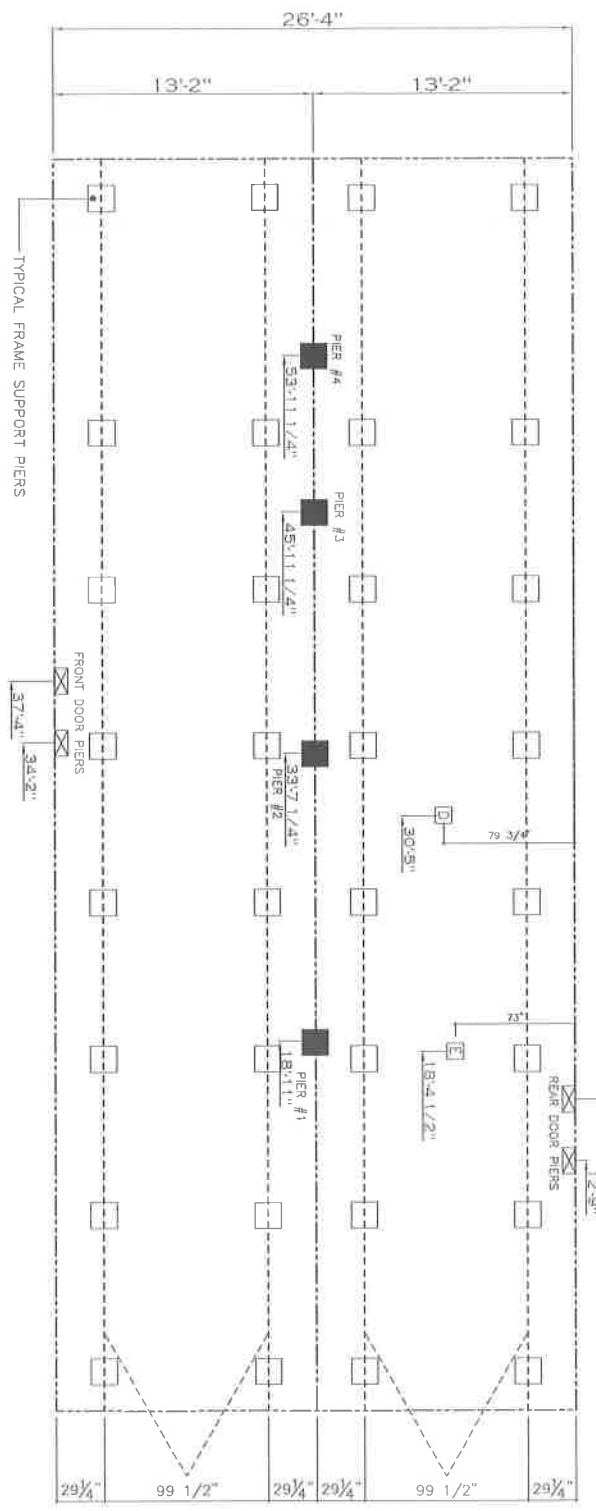
20 lb ROOF		SIDEWALL OPENING (FT)							
SIDEWALL OPENING REQUIRED PIER LOAD (LBS)	REQUIRED PIER LOAD (LBS)								
	3	4	5	6	8	10			
28' BOX WIDTH	1162	1315	1467	1620	1925	2230			

*FOR 30 lb & 40 lb ROOF LOAD REFER TO TABLES 7b & 7c IN THE INSTALLATION MANUAL.

SERVICE DROP LEGEND	
[E]	= ELECTRICAL DROP
[W]	= WATER INLET
[D]	= DWV PLUMBING DROP
[G]	= GAS INLET

PIER LEGEND	
[□]	= SUPPORT UNDER MANTLE OPENING
[■]	= SUPPORT AT MANTLE COLUMN
[▣]	= SUPPORT UNDER MANTLE WALL
[■]	= PIER PORCH/RECESSED ENTRY
[□]	= PER MAIN BEAM
[▣]	= PER PERIMETER

20 lb Roof Live Load			30 lb Roof Live Load			40 lb Roof Live Load		
Column Pier #	Distance from Hitch (ft)	Pier Load (lbs)	Column Pier #	Distance from Hitch (ft)	Pier Load (lbs)	Column Pier #	Distance from Hitch (ft)	Pier Load (lbs)
1	18.917	3301	1	18.917	5321	1	18.917	6531
2	33.604	3501	2	33.604	5121	2	33.604	6531
3	45.938	1980	3	45.938	3560	3	45.938	4350
4	53.938	1980	4	53.938	3560	4	53.938	4350



- GENERAL NOTES:
- PIER LOADS SHOWN ARE TO BE USED TO SIZE THE FOOTINGS BELOW THE MARRIAGEWALL FOR COLUMN SUPPORT PIERS. REFER TO TABLES 6b AND 6c IN THE INSTALLATION MANUAL FOR LOAD ON FRAME PIER FOOTINGS. FOR HOMES THAT DO NOT REQUIRE PERIMETER BLOCKING, REFER TO TABLES 7b AND 7c IN THE INSTALLATION MANUAL FOR LOAD ON FRAME PIER FOOTINGS THAT REQUIRE PERIMETER BLOCKING. REFER TO TABLES 10 AND 10a TO DETERMINE FOOTING SIZE FOR ALL PIERS.
 - REFER TO TABLE 9 FOR PIER CONFIGURATION AND MAXIMUM ALLOWABLE HEIGHTS. CROSS REFERENCE THE PIER HEIGHT WITH THE MAXIMUM ALLOWABLE FLOOR HEIGHT LISTED IN THE FRAME TIEDOWN CHARTS (TABLE 18, 19, AND 20).
 - FLOOR WIDTH SHOWN IS FOR STANDARD PRODUCT ONLY. CONTACT THE MFG. PLANT FOR SPECIFICATIONS OF OPTIONS ORDERED.
 - SERVICE DROP LOCATIONS IDENTIFIED ARE APPROXIMATE.
 - THE MAXIMUM SPACING FOR 8" I-BEAMS IS 8 FEET, 10" & 12" I-BEAMS ARE 10 FEET.

1685 SQ.FT. (STD PLAN "CONDITIONED")
 N/A SQ.FT. (W/OPT. PORCH/RECESS "CONDITIONED")

Product Designer: JDC

CMH MANUFACTURING	Model #: SIC22643A Drawing #:
Date: 5/1/19 Scale: N=3 30M1.50	

28' x 64' BLUE BONNET BREEZE

PIER LOADS

REVISION ECR - N/A
 1/19/20 BF