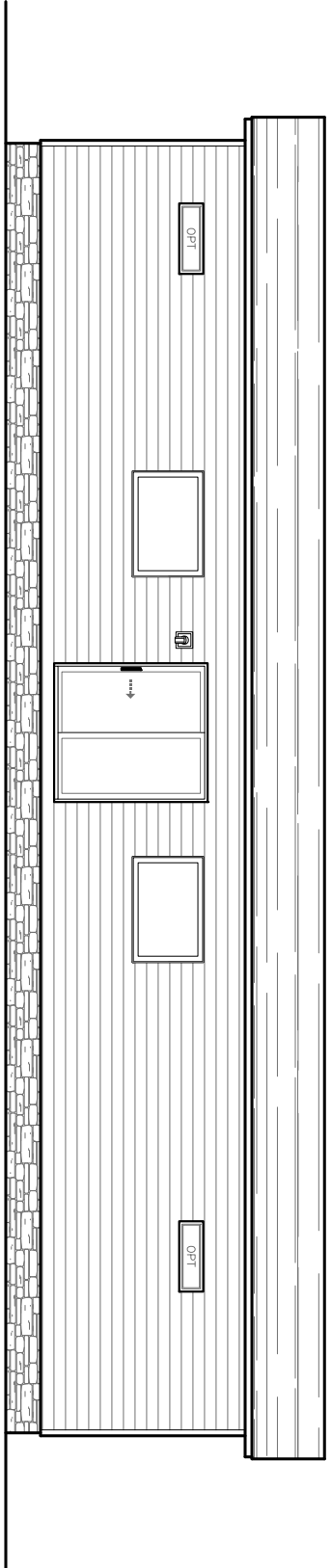


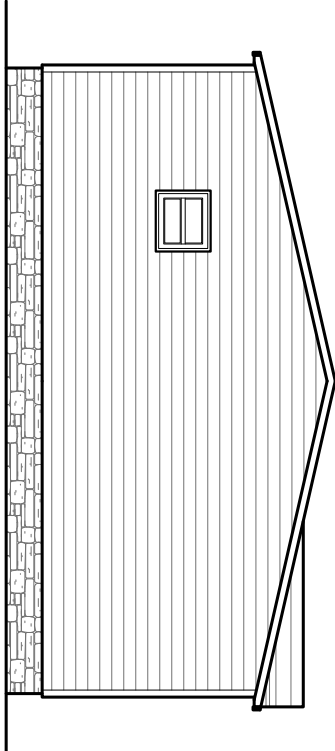
1475 SQ.FT.

Model #: ANN28563C
ANNIVERSARY

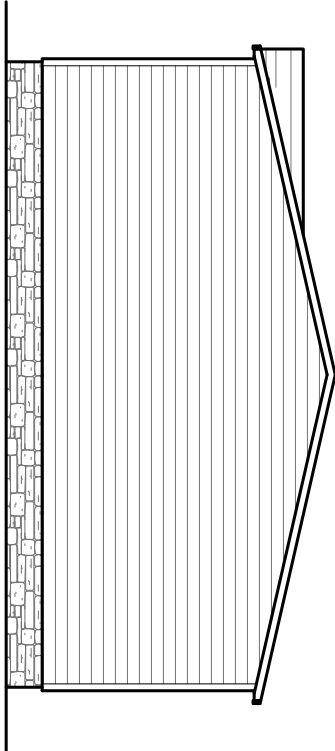
Drawing #:
38M150



REAR ELEVATION



LEFT SIDE ELEVATION



RIGHT SIDE ELEVATION



FRONT ELEVATION

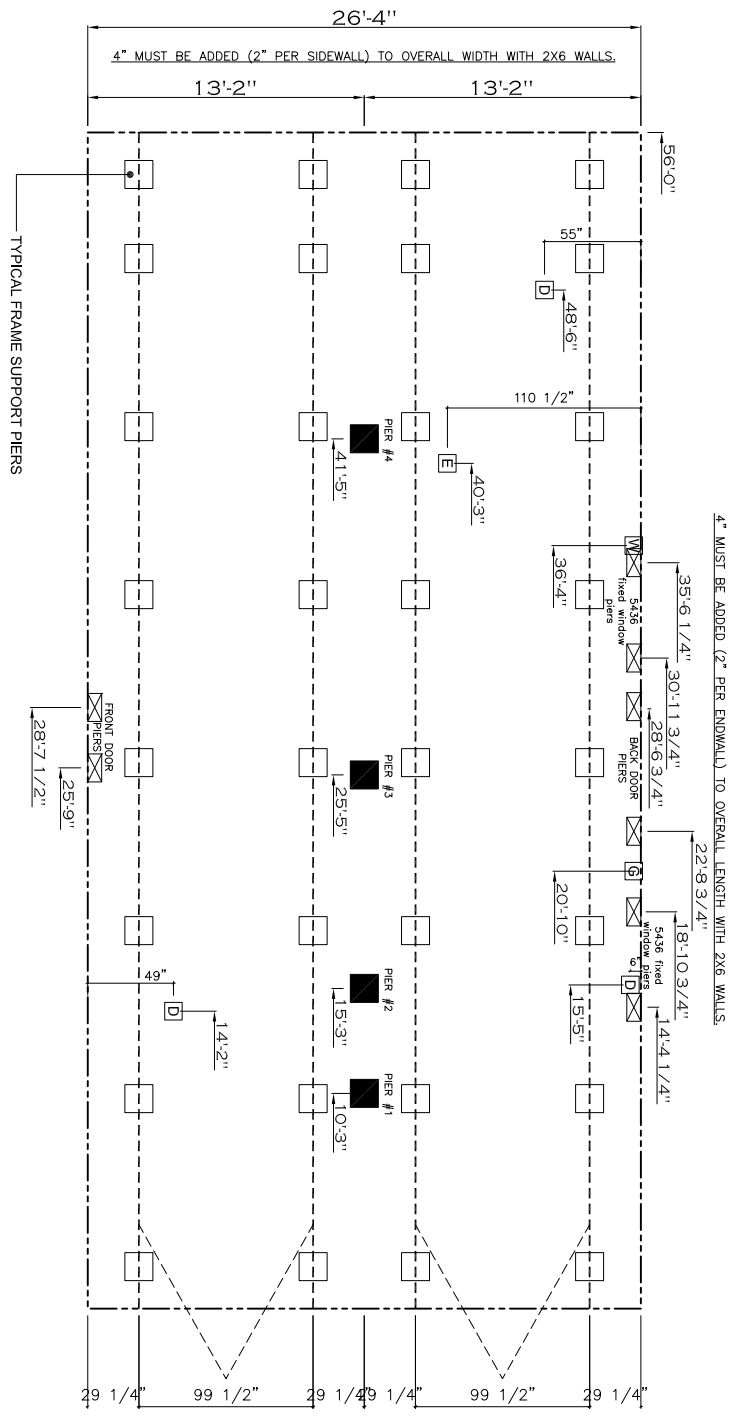
1478 SQ.FT. (STD PLAN 'CONDITIONED') N/A SQ.FT. (W/OPT. PORCH/RECESS 'CONDITIONED')	
CMH MANUFACTURING	Model #: ANN28563C Drawing #: 38M1150
Product Designer: JDC	28' x 56' ANNIVERSARY
ELEVATION	

20 lb ROOF LOAD		SIDEWALL OPENING (FT)				
REQUIRED PIER LOAD (LBS)		3	4	5	6	8
28' BOX WIDTH		1175	1330	1485	1640	1950
						2260

*FOR 30 lb & 40 lb ROOF LOAD REFER TO TABLES 7b & 7c IN THE INSTALLATION MANUAL.

PIER LEGEND	
	= SUPPORT UNDER MAIN OPENING
	= SUPPORT AT LAMING COLUMN
	= SUPPORT UNDER LAMING WALL
	= PIER REINFORCED ENTRY
	= PIER MAIN BEAM
	= PIER PENMETER
	= TIE-DOWN SUPPORT (OTV PER TBLL)
	(N, SEE DETAIL D-9 IN FOUND. MFG.)

SERVICE DROP LEGEND	
	= ELECTRICAL DROP
	= WATER INLET
	= DMV/PLUMBING DROP
	= GAS INLET



- GENERAL NOTES:**
- PIER LOADS SHOWN ARE TO BE USED TO SIZE THE FOOTINGS BELOW THE MARRIAGEWALL FOR COLUMN SUPPORT PIERS. REFER TO TABLES 6b AND 6c IN THE INSTALLATION MANUAL FOR LOAD ON FRAME PIER FOOTINGS FOR HOMES THAT DO NOT REQUIRE PERIMETER BLOCKING. REFER TO TABLES 7b AND 7c IN THE INSTALLATION MANUAL FOR LOAD ON FRAME PIER FOOTINGS THAT REQUIRE PERIMETER BLOCKING. REFER TO TABLES 10 AND 10a TO DETERMINE FOOTING SIZE FOR ALL PIERS.
 - REFER TO TABLE 9 FOR PIER CONFIGURATION AND MAXIMUM ALLOWABLE HEIGHTS. CROSS REFERENCE THE PIER HEIGHT WITH THE MAXIMUM ALLOWABLE FLOOR HEIGHT LISTED IN THE FRAME HEADOWN CHARTS (TABLE 18, 19, AND 20).
 - FLOOR WIDTH SHOWN IS FOR STANDARD PRODUCT ONLY. CONTACT THE MFG PLANT FOR SPECIFICATIONS OF OPTIONS ORDERED.
 - SERVICE DROP LOCATIONS IDENTIFIED ARE APPROXIMATE.
 - THE MAXIMUM SPACING FOR FRAME SUPPORT PIERS FOR 8" BEAMS IS 8 FEET, 10" & 12" BEAMS ARE 10 FEET.

20 psf Roof Live Load		
Column Pier #	Distance from Hitch	Pier Load (lbs)
1	10.25	1388
2	15.25	1388
3	25.42	3560
4	41.42	3560

30 psf Roof Live Load		
Column Pier #	Distance from Hitch	Pier Load (lbs)
1	10.25	2770
2	15.25	2770
3	25.42	5667
4	41.42	5667

40 psf Roof Live Load		
Column Pier #	Distance from Hitch	Pier Load (lbs)
1	10.25	3363
2	15.25	3363
3	25.42	6983
4	41.42	6983

1475 SQ.FT. (STD PLAN "CONDITIONED")
 N/A SQ.FT. (W/OPT. PORCH/RECESS "CONDITIONED")

CMH MANUFACTURING

Product Designer: JDC

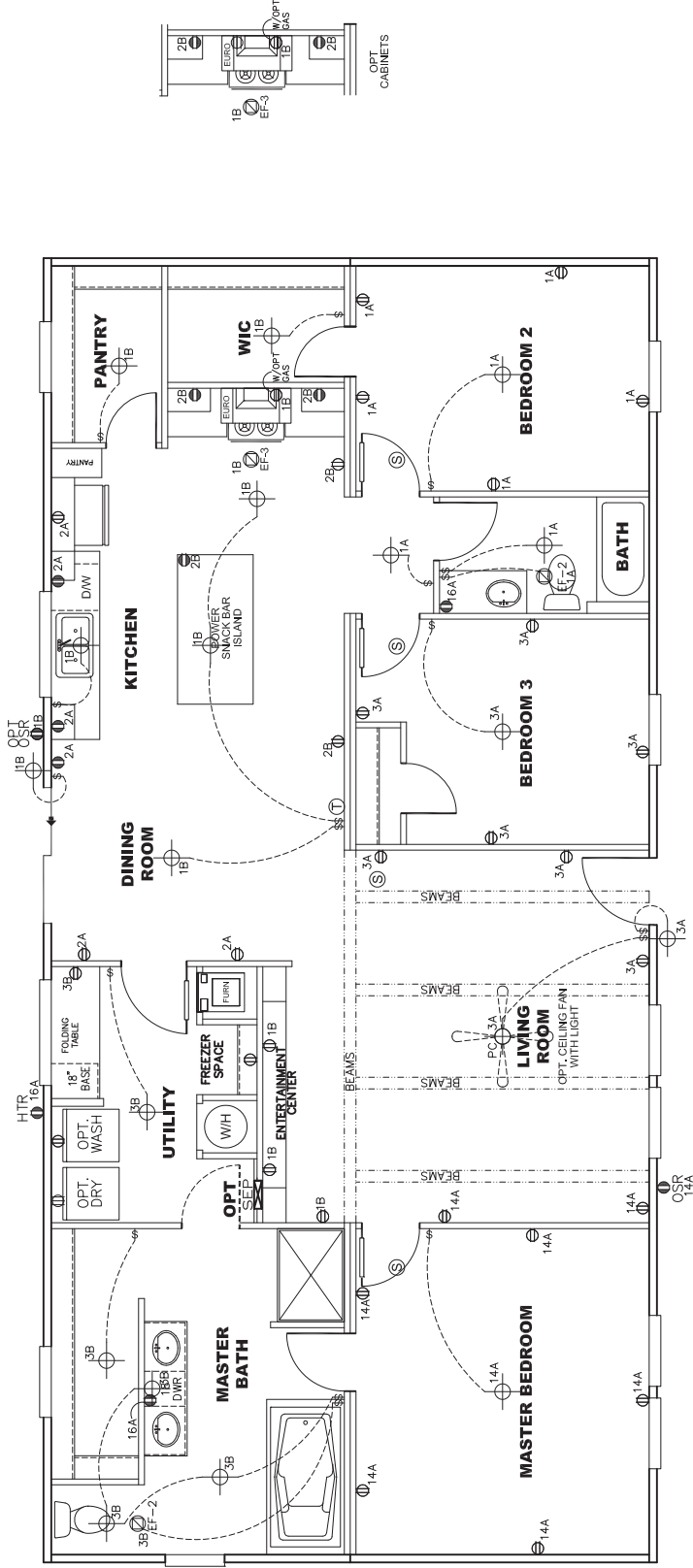
Model #: ANN205G3C
 Date: 7/20/16
 28' x 56' ANNIVERSARY

Drawing #: 38M150

PIER LOADS

NOTES:

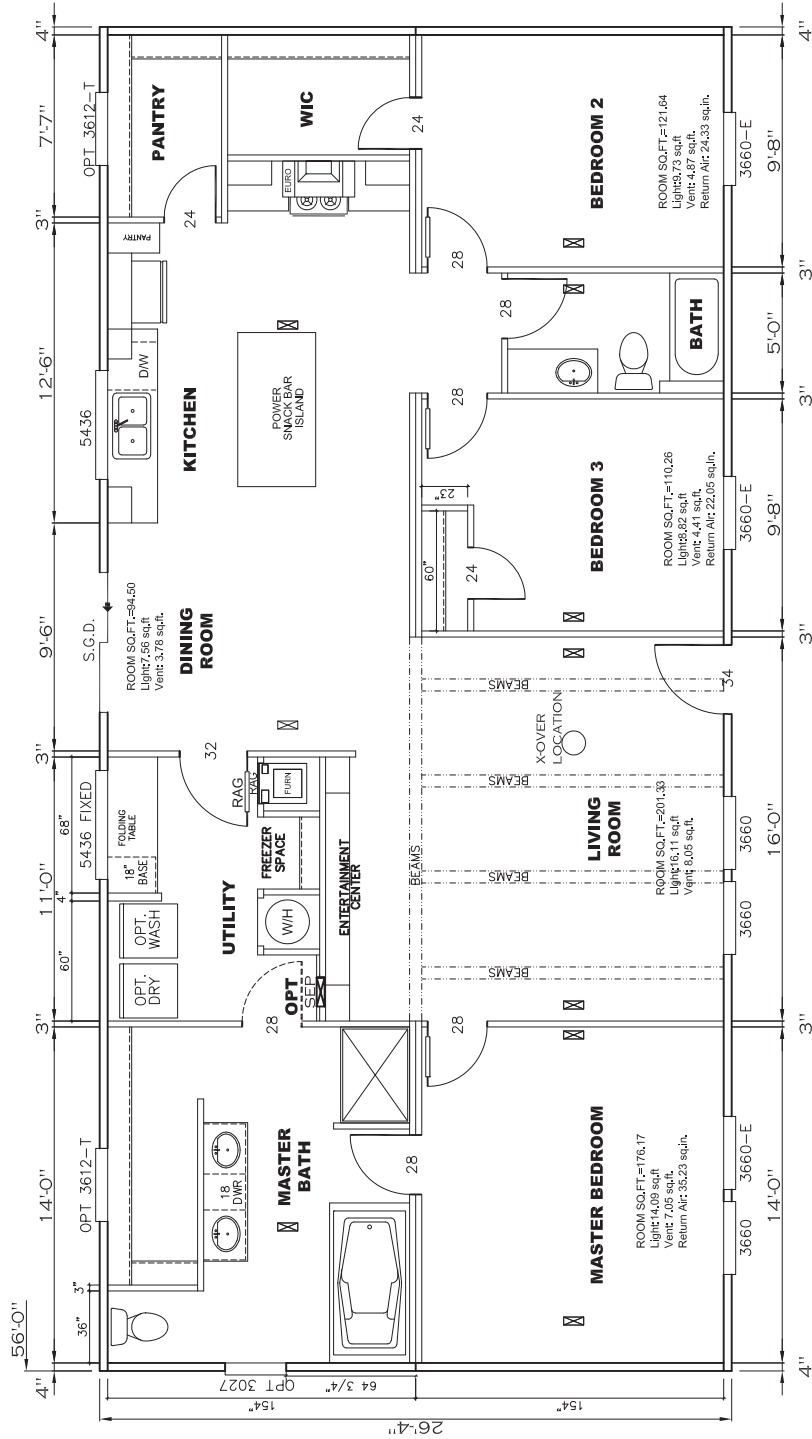
1. ALL CIRCUITS SHOWN ARE FOR REFERENCE AND MAY BE CHANGED BASED ON OPTIONAL COMPONENTS INSTALLED IN THE HOME.
2. REFER TO EL SECTION OF THE DAPIA FOR SYMBOL CHART.
3. EITHER LIGHT OR RECEPTACLE MUST CONNECT TO SWITCH.
4. EF-1= 50 CFM EXHAUST FAN REQUIRED FOR THERMAL ZONE III THERMAL ZONES I & II MAY USE FAN OR WINDOW W/1.5 SQ. FT. OPENABLE GLASS.
5. EF-2= 50 CFM EXHAUST FAN REQUIRED THERMAL ZONE I, II, AND III.
6. EF-3= 100 CFM RANGE EXHAUST FAN, SWITCH AT HOOD.
7. EF-4= WHOLE HOUSE VENTILATION PER REQUIREMENTS IN S-HV-10 & 10A OR M-HV-11 & 11A OF DAPIA.
8. REFER TO EL SECTION OF THE DAPIA OR THE MFG. INSTALLATION INSTRUCTIONS FOR PROPER WIRE SIZE AND BREAKER SIZE FOR SPECIFIC APPLIANCE AND MODEL BEING INSTALLED.
9. ALL SMOKE ALARMS TO BE LOCATED ON THE CEILING.
10. DIMENSIONS SHOWN ON PRINT ARE APPROXIMATE AND TO BE USED ONLY AS A GUIDELINE.



APPROVED
REVIS
21 DEC 2017
FP-28-4797
Federal Manufactured
Home Construction
And Safety Standards

CIRCUIT	CIRCUIT #	WIRE	BREAKER	CIRCUIT	CIRCUIT #	WIRE	BREAKER
LIGHT/RECP	1A, 1B, 3A, 3B, 14A	14-2	15-SP	BATH/HTR	16A	12-2	20-SP
WATER HEATER	4A, 6B	SEE NOTE #8	SEE NOTE #8	OPT. GS/SP	9B	SEE NOTE #8	SEE NOTE #8
RANGE	5B, 7A	SEE NOTE #8	SEE NOTE #8	W/D, JAC	11A, B	SEE NOTE #8	SEE NOTE #8
FURNACE	6A, 8A, 10A, B	SEE NOTE #8	SEE NOTE #8	FREEZER	1, 3A	SEE NOTE #8	SEE NOTE #8
WASHER	12A	SEE NOTE #8	SEE NOTE #8				
DRYER	5A, 7B	SEE NOTE #8	SEE NOTE #8				

1475 SQ.FT. (STD PLAN "CONDITIONED")
 N/A SQ.FT. (W/OPT. PORCH/RECESS "CONDITIONED")
CMH MANUFACTURING
 Model #: ANM28563C Drawing #: 38M150
 Date: 7/26/16 Scale: N/A
 Product Designer: JDC
ELECTRICAL PLAN-06



APPROVED
REVISED
 21 DEC 2017
 FP-28-4797
 Federal Manufactured
 Home Construction
 And Safety Standards

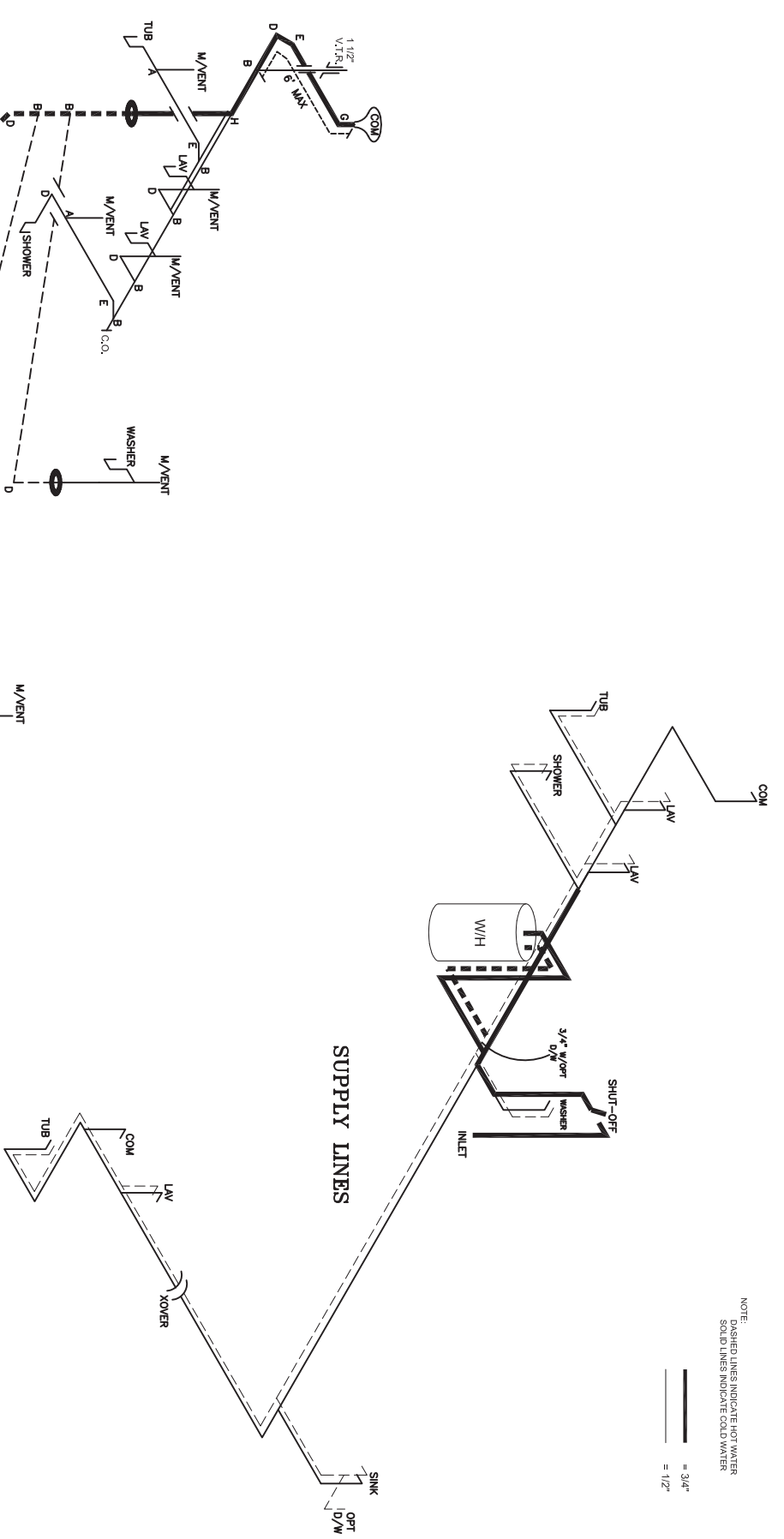
1475 SQ.FT. (STD PLAN "CONDITIONED")
 N/A SQ.FT. (W/OPT. PORCH/RECESS "CONDITIONED")

CMH MANUFACTURING	Model #: ANN28563C	Drawing #:
Product Designer: JDC	Date: 7/28/16	Scale: N/A
		38M1150
		28' x 56' ANNIVERSARY

NOTE: *-T = TRANSOM 60" ABOVE A.F.F.

FLOOR PLAN

NOTE:
 DASHED LINES INDICATE HOT WATER
 SOLID LINES INDICATE COLD WATER



LEGEND

A	SHORT TURN T-Y
B	LONG TURN T-Y
C	1/4 BEND
D	LONG SWEEP 1/4 BEND
E	45° SANITARY TEE
F	45° OFFSET ELL
G	DOUBLE ELL
H	22 1/2° ELL
I	45° Y
J	LONG TURN STREET ELBOW
K	
L	45° FTG ELL

DWV LINE SIZE CHART

—	= 3"
—	= 2"
—	= 1 1/2"

APPROVED
REVISED
 21 DEC 2017
 FP-28-4797
 Federal Manufactured
 Home Construction
 And Safety Standards

1475 SQ.FT. (STD PLAN "CONDITIONED")

N/A	SQ.FT.	(W/OPT. PORCH/RECESS "CONDITIONED")
CMH	MANUFACTURING	Model #: ANN28563C Drawing #:
		28 X 56 ANNIVERSARY Scale: N/A 30M150
		Product Designer: JDC

D.W.V. and Supply Lines

2 **REVISION** ECR-608316
 8/4/17 JDC